



## QY70K FULL HYDRAULIC TRUCK CRANE

- Adoption of several national patents and proprietary technology.
- 5-section telescopic profile and 2-section folding jib, larger working range.
- Single cylinder for front support elevating, low center of gravity and good stability.
- Full-width driver's cab and newly-designed operator's cab with broad view, convenient for operation.
- Swing system with free-sliding function can automatically align to load, pinion offset makes meshing clearance easy to adjust.
- New structure and imported steel material are used to minimize the total weight and maximize the whole vehicle performances. Main performances are in the leading position in the industry.
- Electro-hydraulic proportional control system implements all operations precisely and easily.
- Main hydraulic components used are international most advanced ones, the whole machine performance improved greatly.
- Two independent variable-displacement winches are used for heavy load at low speed and light load at high speed, energy saving and high work efficiency.
- Well-equipped safety devices such as automatic load moment limiter, hoist limit switch, wire rope over-release cut-out device, make operation more safe.
- Air conditioners are available for crane carrier and superstructure.
- Environmental and powerful engine is equipped with the crane, strong drive and good passing-ability.
- Outrigger full-extension & mid-extension and single top are available, enlarge work range.
- CE marked model qy70k(CE) with original Cummins engine model QSL325, 242kW/2100rpm/1424Nm is available.
- QY70K CE is optional.

### XUZHOU CONSTRUCTION MACHINERY GROUP IMP. & EXP. CO., LTD.

Add: XCMG Headquarters, Xuzhou Economic Development Zone, Jiangsu, China 221004

Tel: **European & American Dept.** +86-516-87739238 **Middle East Dept.** +86-516-87739202

**Asian Dept.** +86-516-87739219 **Central Asian Dept.** +86-516-87739239

**American & Oceania Dept.** +86-516-87739237 **African Dept.** +86-516-87739222

Fax: +86-516-87739230

E-mail: [sinomac@public.xz.js.cn](mailto:sinomac@public.xz.js.cn)

[www.xcmg.com](http://www.xcmg.com)

Please contact with our district agent:

**Materials and specifications are subject to change without notice.**



# QY70K

## HYDRAULIC TRUCK CRANE



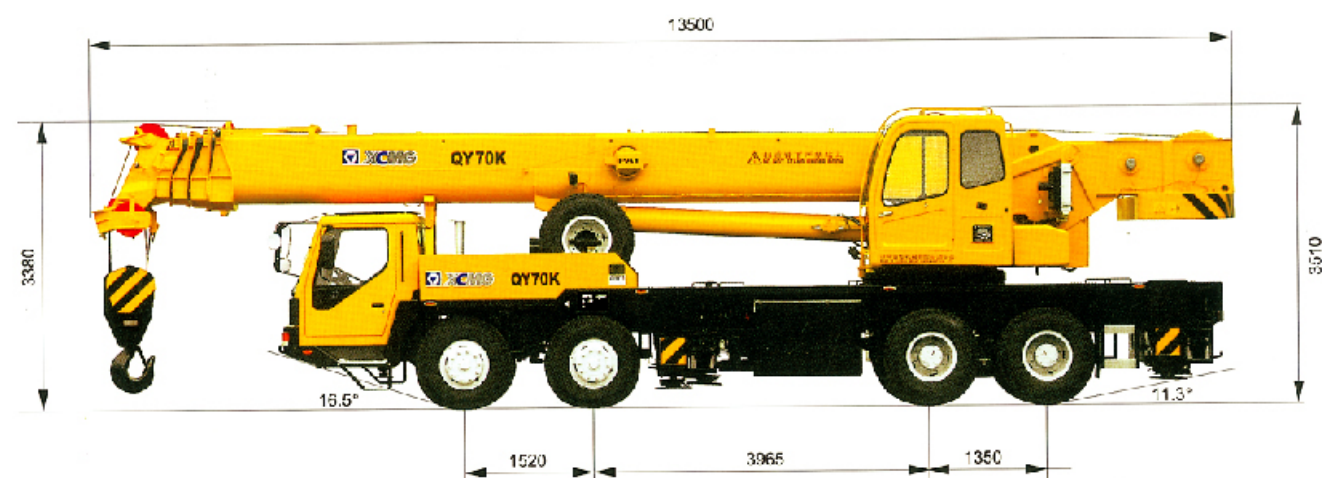
Max. Total Rated Lifting Load	70t
Full-extend Boom Lifting Height	42m
Full-extend Boom+Jib Lifting Height	58m





# QY70K

## FULL HYDRAULIC TRUCK CRANE



### Weight

Dead weight in travel state	41000kg
Axle load	
Front axle	15000kg
Rear axle	26000kg

### Dimensions

Overall length	13500mm
Overall width	2800mm
Overall height	3510mm

### Power

Engine model	WD615.44	WD615.45
Engine rated putout	235/2200kw/(r/min)	266/2208kw/(r/min)
Engine rated torque	1250/1500N.m/(r/min)	1460/1400N.M/(r/min)
Max. rated speed	2200r/min	2200r/min

### Travel

Max. travel speed	75km/h	75km/h
Min. turning diameter	24m	24m
Min. ground clearance	270mm	270mm
Approach angle	16.5°	16.5°
Departure angle	11.3°	11.3°
Braking distance(at 30km/h)	10m	10m
Max. gradeability	35%	40%
Fuel consumption of 100km	42L	42L

### Lifting performance

Max. total rated lifting load	70t
Min. rated working radius	3m
Turning radius at swing table tail	3550mm
Max. load moment	
Base boom	2303kN.m
Full-extend boom	1043kN.m
Full-extend boom+Jib	492.8kN.m
Outrigger extension distance	
Longitudinal/Lateral	5.75/6.9m
Lifting height	
Base boom	11.2m
Full-extend boom	42m
Full-extend boom+Jib	58m

### Working speed

Boom raising	75s
Boom telescoping time	
Full-extending/retracting	150/100s
Max. slewing speed	2.0r/min
Outrigger telescoping time	
Outrigger beam extending/retracting synchronously	30/20s
Outrigger jack extending/retracting synchronously	35/12s
Hoisting speed(single rope)	
Main winch with full load/no load	75/130m/min
Auxiliary winch with full load/no load	98/108m/min

### Total rated lifting load for boom [Table 1]

Full-extend outrigger, without the 5th outrigger, boom at the side or the rear, or with the 5th outrigger, 360° swing						
Working radius m	Base boom 11.2m	Mid-extend boom 15.05m	Mid-extend boom 18.9m	Mid-extend boom 26.6m	Mid-extend boom 34.3m	Full-extend boom 42m
3	70000	46500	36500	22500	17000	9200
3.5	63500	40500	35500	22500	16000	8900
4	54500	33500	33500	21500	15000	8100
5	47000	26500	25500	19500	13500	7400
6	38500	21500	21300	17000	11600	7100
7	29500	17500	17000	15200	9300	6500
8	22500	14000	13800	10600	8000	5500
9	17500	9800	9500	8000	7000	4800
10			6600	7000	5500	3800
12			5600	6000	4200	3000
14			5000	4800	3200	2300
15				3800	2500	1900
16				2850	1900	1600
18					1500	1400
20					1100	1100
22					850	850
24						600
26						
28						
29						
30						
32						
34						
36						

### Total rated lifting load for jib [Table 2]

Full-extend outrigger, without the 5th outrigger, boom at the side or the rear, or with the 5th outrigger, 360° swing						
Boom angle (°)	Boom 42m					
	Jib 8.5m			Jib 15m		
	0°	15°	30°	0°	15°	30°
78	4000	2700	2400	2500	1400	1100
75	3600	2500	2300	2100	1250	1040
72	3200	2300	2200	1800	1150	990
70	2900	2200	2100	1700	1100	950
65	2400	2000	1900	1400	950	880
60	1850	1800	1700	1200	880	830
55	1250	1200	1100	900	800	780
50	850	800	700	610	550	500
Weight of hook block	100kg (For 4t)					

### Notes to the tables:

- The data given in the tables are the maximum lifting capacity when the crane is set up on level and firm ground.
- The data given in the tables are the step type values. When the actual working radius is between two values, the nearest larger value should be selected according to the rated lifting load.
- The boom telescoping is sequence plus synchronous. When extending boom, first extend fully the 2nd boom section, then the 3rd, 4th and 5th boom sections. When retracting boom, first retract fully the 3rd, 4th and 5th boom sections, then the 2nd boom section.
- The total lifting loads in the table include the weight of hook block and slings, and the working radius in the table are the actual values including the deflection of boom under load.
- The total rated lifting load for boom is based on boom tip not attached with job, if with jib, the lifting load should be deducted 2000kg.
- The total rated lifting load for single top (auxiliary boom sheave) are the same as those for main boom, but the max. lifting load must not exceed 4t.

