

QY25K FULL HYDRAULIC TRUCK CRANE

- QY25K Truck Crane profile hydraulic system won 6 national patents.
- 4-section boom of all-round octagonal cross-section, single cylinder for front support elevating low center of gravity, good stability.
- Main winch and auxiliary winch separated from each other can work not only individually but also simultaneously.
- Full-dimension driver's cab with broaden view is convenient for operation.
- Swing system with free-sliding function can automatically align to load. Pinion offset makes meshing clearance easy to adjust.
- New materials are used to minimize the total weight and maximize the whole vehicle performances. Main performances are in the leading position in the industry.
- Hydraulic pilot control system can finish all operations precisely with gently pushing the two joysticks on armrest. (Mechanical operation system is option for customer)
- Hydraulic valve block is integrated modular designed. little pressure loss and high efficiency.
- Balance valve designed with international technology, oil filter, anti-cavitation device and plug in hydraulic circuit make operation more reliable.
- Well-equipped safety devices, such as automatic moment limiter, hoist height limiter, wire rope over-release cut-out device, make operation more safe.
- Engine, air conditioners for superstructure and chassis and hydraulic device are available for option.
- QY25K CE is optional.

XUZHOU CONSTRUCTION MACHINERY GROUP IMP. & EXPCO., LTD.

Add: XCMG Headquarters, Xuzhou Economic Development Zone, Jiangsu, China 221004
 Tel: **European & American Dept.** +86-516-87739238 **Middle East Dept.** +86-516-87739202
Asian Dept. +86-516-87739219 **Central Asian Dept.** +86-516-87739239
American & Oceania Dept. +86-516-87739237 **African Dept.** +86-516-87739222
 Fax: +86-516-87739230
 E-mail: sinomac@public.xz.js.cn
 www.xcmg.com

Please contact with our district agent:

Materials and specifications are subject to change without notice.



QY25K

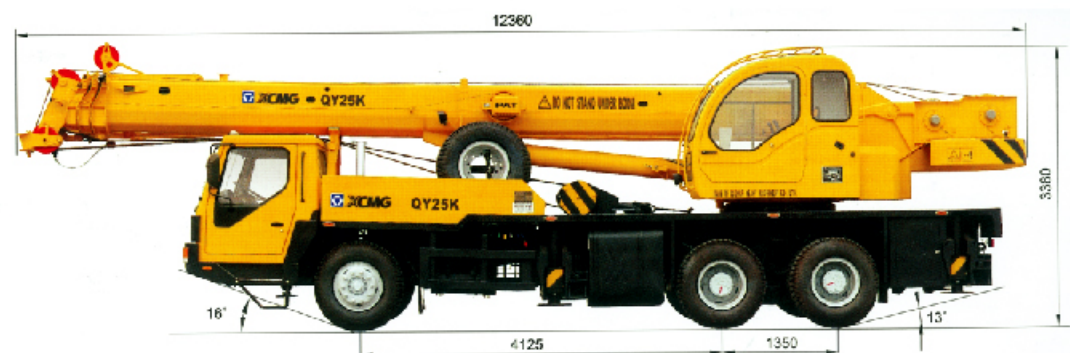
HYDRAULIC TRUCK CRANE



Max. Total Rated Lifting Load	25t
Full-extend Boom Lifting Height	32.5m
Full-extend Boom+Jib Lifting Height	40.8m

QY25K

FULL HYDRAULIC TRUCK CRANE



Weight

Dead weight in travel state	27900kg
Axle load	
Front axle	6100kg
Rear axle	21800kg

Dimensions

Overall length	12360mm
Overall width	2500mm
Overall height	3380mm

Power

Engine model	6C215-2	SC8DK280Q3
Engine rated putout	158/2200kW/(r/min)	206/2200kW/(r/min)
Engine rated torque	790/1400N.m/(r/min)	1112/1400N.m/(r/min)
Max. rated speed	2200r/min	2200r/min

Travel

Max. travel speed	72km/h	42km/h
Min. turning diameter	22000mm	22000mm
Min. ground clearance	260mm	260mm
Approach angle	16°	16°
Departure angle	13°	13°
Braking distance(at 30km/h)	10m	10m
Max. gradeability	27%	30%
Fuel consumption of 100km	~ 35L	~ 35L

Lifting performance

Max. total rated lifting load	25t
Min. rated working radius	3m
Turning radius at swing table tail	3065mm
Max. load moment	
Base boom	948.15kN.m
Full-extend boom	521kN.m
Full-extend boom+Jib	331kN.m
Outrigger extension distance	
Longitudinal/Lateral	4.8/6.0m
Lifting height	
Base boom	10.5m
Full-extend boom	32.5m
Full-extend boom+Jib	40.8m

Working speed

Boom raising	75s
Boom telescoping time	
Full-extending/retracting	100/60s
Max. slewing speed	2.5r/min
Outrigger telescoping time	
Outrigger beam extending/retracting synchronously	35/30s
Outrigger jack extending/retracting synchronously	40/35s
Hoisting speed(single rope)	
Main winch with full load/no load	70/100m/min
Auxiliary winch with full load/no load	60/100m/min

4-section octagonal telescopic boom
streamlined and integrated driver's cab and operator's cab made of complex material



Total rated lifting load for boom [Table 1]

Full-extend outrigger, without the 5th outrigger, boom at the side or the rear, or with the 5th outrigger, 360° swing

Working radius(m)	Base boom 10.40m		Mid-extend boom 17.6m		Mid-extend boom 24.80m		Full-extend boom 32.00m	
	Lifting Load(kg)	Lifting Height(m)	Lifting Load(kg)	Lifting Height(m)	Lifting Load(kg)	Lifting Height(m)	Lifting Load(kg)	Lifting Height(m)
3.0	25000	10.50	14700	18.11				
3.5	25000	10.25	14700	17.98				
4.0	24000	9.97	14700	17.82	9100	25.28		
4.5	21500	9.64	14700	17.65	9100	25.16		
5.0	18700	9.28	14200	17.47	9100	25.03		
5.5	17200	8.86	13500	17.26	9100	24.89	6500	32.32
6.0	15700	8.39	13000	17.04	8800	24.74	6500	32.20
7.0	12100	7.22	12000	16.54	8200	24.41	6500	31.95
8.0	9600	5.54	9900	15.95	7500	24.02	6100	31.66
9.0			8100	15.27	7100	23.59	5500	31.33
10.0			6800	14.48	6400	23.10	5000	30.97
12.0			5000	12.49	5060	21.94	4300	30.13
14.0			3800	9.60	3900	20.51	3800	29.12
16.0					3100	18.74	3100	27.93
18.0					2530	16.52	2500	26.52
20.0					2000	13.61	1960	24.95
22.0					1650	9.29	1600	22.90
24.0							1290	20.54
26.0							1020	17.60
28.0							810	13.71
29.0							700	11.07
Parts of line	10		6		4		3	
Weight of hook block	250kg							
Min. boom angle	28°		30°		20°		19°	
Max. boom angle	68°		76°		78°		78°	

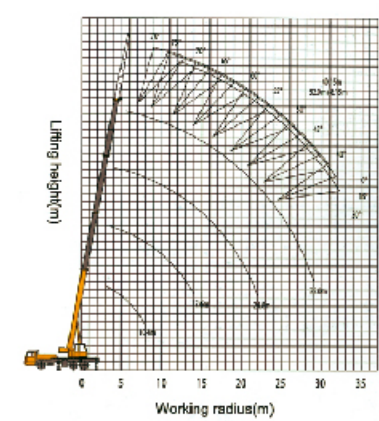
Total rated lifting load for jib [Table 2]

Boom angle (°)	Boom 32m +Jib 8.15m At the side or the rear					
	Offset angle					
	0°		15°		30°	
	Working Radius (mm)	Lifting Load (kg)	Working Radius (mm)	Lifting Load (kg)	Working Radius (mm)	Lifting Load (kg)
78	9000	2800	11000	2500	13000	1900
75	11000	2800	13000	2400	14700	1750
72	13000	2750	15000	2200	16600	1700
70	14200	2650	16200	2100	17800	1600
65	17500	2150	19400	1800	20800	1500
60	20500	1800	22400	1600	23800	1400
55	23200	1400	25300	1300	26500	1230
50	26500	1000	28000	900	29000	900
40	31500	500	32500	400	33300	400

With hook block 50kg

Notes: about table 1. and table 2:

- The data in the table are the max. lifting capacity when the crane is set up on level and firm ground.
- The total rated lifting load in the table includes the weight of hook block and slings.
- The working radius in the table is the actual value including boom deflection under loads.
- Wind pressure 125N/m², lifting operation is also allowed under the condition of wind force 7.
- Lifting height in table 1 and working radius in table 2 are reference value.



▲ Lifting height area