



50 TON

WHL50TC100 TRACTOR



With a 50-ton lifting capacity, long reach and a sub-frame suitable for fifth wheel installation, the WHL50TC100 Tractor offers heavy lifting and versatility.

Out and down outriggers with independently operated horizontal extension cylinders and vertical jack cylinders, give the operator true stability on uneven surfaces or in tight locations. The fully equipped cab provides the operator with a comfortable working environment in all weather conditions. Mounted on a tandem steer tri-drive rear axle chassis with fifth wheel, this crane is truly capable of heavy lifting and heavy hauling.

FEATURES

- 50-ton lifting capacity (82,000lbs at 10' radius)
- 110' tip height (fully extended)
- 4 section 100' fully proportional boom
- Tapered rear subframe for fifth wheel installation
- 30.5' retracted length
- Continuous rotation
- 15,000 lb, 2 speed grooved drum planetary winch with integral brake for high efficiency and security, includes cable packer.
- Out and down outriggers
- Dual fan oil cooler
- High strength box construction, welded booms for maximum strength to weight ratio
- A2B and LMI system with digital radio weight indicator
- Pre-wired boom and cab for work lights
- Remote Monitoring Video System - two cameras and one in-cab display (view right rear outriggers and winches)
- 40-ton four-sheave crane block (Easy Reeve)

OPTIONAL

- 31' Orientable (0°, 15°, 30°) swing around jib, stows on side of boom
- 31' - 51' Orientable (0°, 15°, 30°) two-stage swing around jib, stows on side of boom
- Hydraulic tank heater
- Boom lights
- Auxillary winch options, 12,000 lb or 15,000 lb winch
- Two person self levelling man basket
- Air conditioning
- Remote radio crane controls

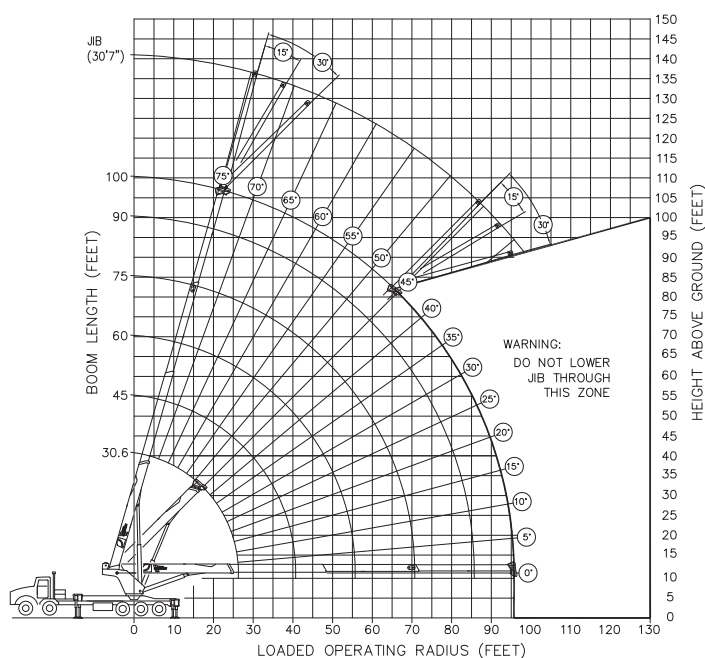


LOAD CHARTS AND SPECIFICATIONS

| MAXIMUM RATED LOAD IN LBS. WITH OUTRIGGERS FULLY EXTENDED | | | | | | | | | | | | | | | | | | | |
|---|----------------------|--------------------------|----------------------|----------------|----------------------|----------------|----------------------|----------------|----------------------|----------------|----------------------|-------------------------|----------------------------|---------------------------|-------|---------------|-------|---------------|-------|
| LOADED OPERATING RADIUS | LOADED BOOM ANGLE | RETRACTED BOOM LENGTH | LOADED BOOM ANGLE | BOOM LENGTH | LOADED BOOM ANGLE | BOOM LENGTH | LOADED BOOM ANGLE | BOOM LENGTH | LOADED BOOM ANGLE | BOOM LENGTH | LOADED BOOM ANGLE | EXTENDED BOOM LENGTH | LOADED OPERATING RADIUS | 30'7" ORIENTABLE JIB | | | | | |
| | | | | | | | | | | | | | | 0° | | 15° | | 30° | |
| | | | | | | | | | | | | | | BOOM ANGLE | LOAD | BOOM ANGLE | LOAD | BOOM ANGLE | LOAD |
| FEET | ° | 30.6' | ° | 45' | ° | 60' | ° | 75' | ° | 90' | ° | 100' | FEET | ° | LB | ° | LB | ° | LB |
| 10 | 63 | 82,000 | 72 | 51,000 | | | | | | | | | 10 | | | | | | |
| 12 | 58 | 72,000 | 69 | 51,000 | | | | | | | | | 12 | | | | | | |
| 15 | 51 | 61,800 | 65 | 51,000 | 72 | 40,000 | | | | | | | 15 | | | | | | |
| 20 | 37 | 46,500 | 58 | 47,500 | 67 | 38,000 | 71 | 27,500 | | | | | 20 | | | | | | |
| 25 | 17 | 38,500 | 50 | 36,500 | 61 | 30,500 | 67 | 24,500 | 71 | 24,300 | 73 | 18,000 | 25 | | | | | | |
| 30 | | | 41 | 29,300 | 56 | 27,100 | 63 | 21,500 | 68 | 21,300 | 70 | 17,500 | 30 | | | | | | |
| 35 | | | 30 | 24,500 | 50 | 24,200 | 59 | 19,100 | 65 | 19,100 | 67 | 15,900 | 35 | | | | | | |
| 40 | | | 11 | 20,700 | 43 | 21,200 | 54 | 17,000 | 61 | 17,000 | 64 | 14,100 | 40 | 70 | 8,500 | | | | |
| 45 | | | | | 35 | 17,500 | 49 | 15,250 | 57 | 15,250 | 61 | 12,500 | 45 | 68 | 8,250 | 71 | 6,800 | 74 | 5,900 |
| 50 | | | | | 26 | 14,500 | 44 | 13,800 | 53 | 13,800 | 57 | 11,300 | 50 | 65 | 7,200 | 69 | 6,300 | 72 | 5,500 |
| 55 | | | | | 13 | 12,300 | 38 | 12,400 | 49 | 12,600 | 54 | 10,300 | 55 | 63 | 6,600 | 66 | 5,650 | 69 | 5,000 |
| 60 | | | | | | | 31 | 10,500 | 45 | 10,700 | 50 | 9,400 | 60 | 61 | 6,150 | 64 | 5,300 | 67 | 4,750 |
| 65 | | | | | | | 23 | 9,000 | 40 | 9,200 | 46 | 8,400 | 65 | 58 | 5,500 | 61 | 4,800 | 64 | 4,400 |
| 70 | | | | | | | | | 35 | 8,000 | 42 | 7,900 | 70 | 55 | 5,000 | 59 | 4,550 | 61 | 4,100 |
| 75 | | | | | | | | | 29 | 6,900 | 38 | 6,900 | 75 | 53 | 4,600 | 56 | 4,200 | 58 | 3,850 |
| 80 | | | | | | | | | 21 | 6,000 | 33 | 6,000 | 80 | 50 | 4,100 | 53 | 3,900 | 56 | 3,650 |
| 85 | | | | | | | | | | | 27 | 5,200 | 85 | 47 | 3,700 | 50 | 3,650 | 53 | 3,450 |
| 90 | | | | | | | | | | | 20 | 4,600 | 90 | | | 47 | 3,400 | 49 | 3,200 |
| 95 | | | | | | | | | | | | | 95 | | | | | 46 | 3,050 |
| | | 975lbs | | 675lbs | | 500lbs | | 425lbs | | 375lbs | | 325lbs | | Deductions for Stowed Jib | | | | | |
| RATINGS ABOVE THE HEAVY LINE ARE BASED ON STRUCTURAL COMPETENCE AND NOT ON MACHINE STABILITY. | | | | | | | | | | | | | | | | | | | |

RATINGS ABOVE THE HEAVY LINE ARE BASED ON STRUCTURAL COMPETENCE AND NOT ON MACHINE STABILITY.

- NOTE:**
1. Deductions must be made from rated loads for lifting accessories: fixed jibs, telescopic jibs, overhaul balls, load hooks, snatch blocks and load blocks
 2. Lift line ratings are based on 5/8" 18 x 19 rotation resistant wire rope with a minimum breaking strength of 45400 lbs (sf>5).
 3. Sheaves numbered from left to right when viewed facing the crane



| | |
|---------------------------|----------------------------|
| 1 PART LINE 9,000 LBS | 6 PART LINE 54,000 LBS |
| 2 PART LINE 18,000 LBS | 7 PART LINE 63,000 LBS |
| 3 PART LINE 27,000 LBS | 8 PART LINE 72,000 LBS |
| 4 PART LINE 36,000 LBS | 9 PART LINE 81,000 LBS |
| 5 PART LINE 45,000 LBS | 10 PART LINE 90,000 LBS |



12155 - 154 Street
Edmonton, AB Canada T5V 1J3
Toll Free: 1 800 661 0378 | Fax: 780 455 6770

www.weldco-hydralift.com

