



TEL-29

Telescopic Aerials



DEMAND BETTER

Hydraulic Leveled Platform
available on all models



Non-Insulated Aluminum
Inner Boom for
increased payload and
less wear and tear
on chassis



Patented Electroguard
provides 42" insulation
gap in fully retracted
position available



Infinitely Adjustable Slide Pads

- Working Height: Up to 35'
- Horizontal Reach: Up to 23' 5"
- Platform Capacity: Up to 350 lbs.

Optional Remote Electric
Controls provide greater
visibility for operation of
the unit from the ground



For more information about the TEL-29 or any of the other outstanding VERSALIFT machines,
contact your authorized VERSALIFT Distributor or call 1.800.825.1085.



Tel-29

Telescopic Aerials

GENERAL SPECIFICATIONS

(Based on 40 in. (1.02m) Frame Height)

INSULATED MODELS

| | TEL-29-I | TEL-29-EI | TEL-29-IH | TEL-29-EIH |
|----------------------------|-----------------------|-----------------------|------------------------|-----------------------|
| Horizontal Reach | 21 ft. 8 in. (6.60 m) | 23 ft. 5 in. (7.14 m) | 20 ft. 11 in. (6.37 m) | 23 ft. 5 in. (7.14 m) |
| Standard Platform Capacity | 300 lbs. (136 kg) | 300 lbs. (136 kg) | 300 lbs. (136 kg) | 300 lbs. (136 kg) |
| Outer Boom Travel | -8° to +80° | -8° to +80° | -14° to +74° | -14° to +74° |
| Inner Boom Extension | 116 in. (2.95 m) | 116 in. (2.95 m) | 116 in. (2.95 m) | 116 in. (2.95 m) |
| Insulation Gap | 42 in. (1.07 m) | 42 in. (1.07 m) | 42 in. (1.07 m) | 42 in. (1.07 m) |

With Standard Pedestal

| | | | | |
|------------------------------------|-------------------------|------------------------|-----------------------|-----------------------|
| Height to Bottom of Platform | 29 ft. 11 in. (9.12 m) | 30 ft. 7 in. (9.32 m) | 29 ft 6 in. (9.0 m) | 29 ft. 1 in. (8.86 m) |
| Working Height | 34 ft. 11 in. (10.64 m) | 35 ft. 7 in. (10.85 m) | 34 ft 6 in. (10.52 m) | 34 ft. 1 in. (10.4 m) |
| Stowed Travel Height | 9 ft. 9 in. (2.97 m) | 9 ft. 9 in. (2.97 m) | 10 ft. 6 in. (3.20 m) | 10 ft. 6 in. (3.2 m) |
| Weight of Lift w/Mounting Hardware | 1,510 lbs. (686 kg) | 1,530 lbs. (695 kg) | 1,560 lbs. (710 kg) | 1,580 lbs. (715 kg) |

Hydraulic System

| | | | | |
|--------------------|------------------------------------|------------------------------------|------------------------------------|------------------------------------|
| Operating Pressure | 2000 PSI (141 kg/cm ²) | 2000 PSI (141 kg/cm ²) | 2250 PSI (158 kg/cm ²) | 2250 PSI (158 kg/cm ²) |
| Flow Rate | 2 GPM (8 lpm) | 2 GPM (8 lpm) | 3 GPM (12 lpm) | 3 GPM (12 lpm) |
| Filtration | 10 micron return | 10 micron return | 10 micron return | 10 micron return |
| | 100 mesh suction | 100 mesh suction | 100 mesh suction | 100 mesh suction |
| System Type | Open Center | Open Center | Open Center | Open Center |

NON-INSULATED MODELS

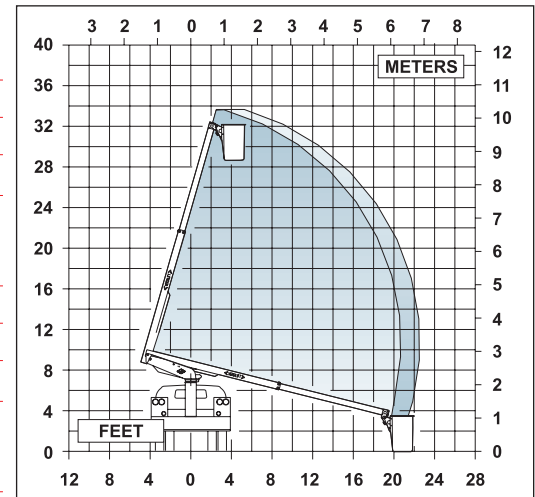
| | TEL-29-N | TEL-29-NE |
|----------------------|-----------------------|-----------------------|
| Horizontal Reach | 20 ft. 8 in. (6.30 m) | 22 ft. 7 in. (6.88 m) |
| Platform Capacity | 350 lbs. (159 kg) | 350 lbs. (159 kg) |
| Outer Boom Travel | -14° to +74° | -14° to +74° |
| Inner Boom Extension | 116 in. (2.95 m) | 116 in. (2.95 m) |

With Standard Pedestal

| | | |
|------------------------------------|-------------------------|-----------------------|
| Height to Bottom of Platform | 28 ft. 11 in. (8.81 m) | 29 ft. 9 in. (9.07 m) |
| Working Height | 33 ft. 11 in. (10.34 m) | 34 ft. 9 in. (10.6 m) |
| Stowed Travel Height | 9 ft. 9 in. (2.97 m) | 9 ft. 9 in. (2.97 m) |
| Weight of Lift w/Mounting Hardware | 1,440 lbs. (653 kg) | 1,460 lbs. (662 kg) |

Hydraulic System

| | | |
|--------------------|------------------------------------|------------------------------------|
| Operating Pressure | 2000 PSI (141 kg/cm ²) | 2000 PSI (141 kg/cm ²) |
| Flow Rate | 2 GPM (8 lpm) | 2 GPM (8 lpm) |
| Filtration | 10 micron return | 10 micron return |
| | 100 mesh suction | 100 mesh suction |
| System Type | Open Center | Open Center |



OPTIONS

- Continuous Rotation
- Emergency Lowering
- Torsion Bar
- Extra Control Circuit from the Platform
- Two-Speed Manual Throttle-Control
- Platform Variations
- Taller Pedestal
- Hydraulic Pump Power Selections
- Capacity Variations
- Bridgmount

NOTE:

1. Specifications may vary without prior notification.
2. Required GVWR can vary significantly with chassis, lift mounting location, service body, accessories, and desired payload.

TIME
MANUFACTURING COMPANY
P.O. Box 20368
Waco, TX 76702-0368
254.399.2100
Fax: 254.399.2651
1.800.825.1085
www.timemfg.com

