



# ET8KX ET8K

**ELECTRIC-HYDRAULIC  
8,000 FT-LB CRANE**

## FEATURES

- ◆ 2,700 lb Maximum Lifting Capacity
- ◆ 8,000 ft-lb Moment Rating
- ◆ Electric-Hydraulic Power
- ◆ Manual or Hydraulic Boom Extension 6-10 ft
- ◆ Manual Boom Extension 10-14 ft
- ◆ Continuous Power Rotation
- ◆ Meets ANSI B30.5 Safety Standards
- ◆ Meets OSHA 1910.180 Requirements

## STANDARD EQUIPMENT

- ◆ Capacity Overload Shut-Off System
- ◆ Anti-Two-Blocking System
- ◆ 65 ft of 7/32" Aircraft-Quality Wire Rope
- ◆ Remote Control Pendant: 20 ft Cord and Quick Disconnect
- ◆ Snatch Block with Swivel Hook Safety Latch
- ◆ Master Disconnect Switch
- ◆ Battery Cable: 25 ft
- ◆ Cable Overhaul Weight

## OPTIONAL EQUIPMENT

- ◆ Radio Remote Controls
- ◆ Manual Outrigger Packages
- ◆ Mounting Pedestal for Platform Bodies
- ◆ Boom Rests

LIFTING CAPACITIES	
REACH (FT)	CAPACITY (LBS)
3	2,700
6	1,325
10	800
14	575

See Back Page for Complete Capacity Chart

## MINIMUM REQUIREMENTS

- ◆ 8,000 lb GVWR Chassis
- ◆ Outriggers
- ◆ Electrical Power Source - 12 V DC

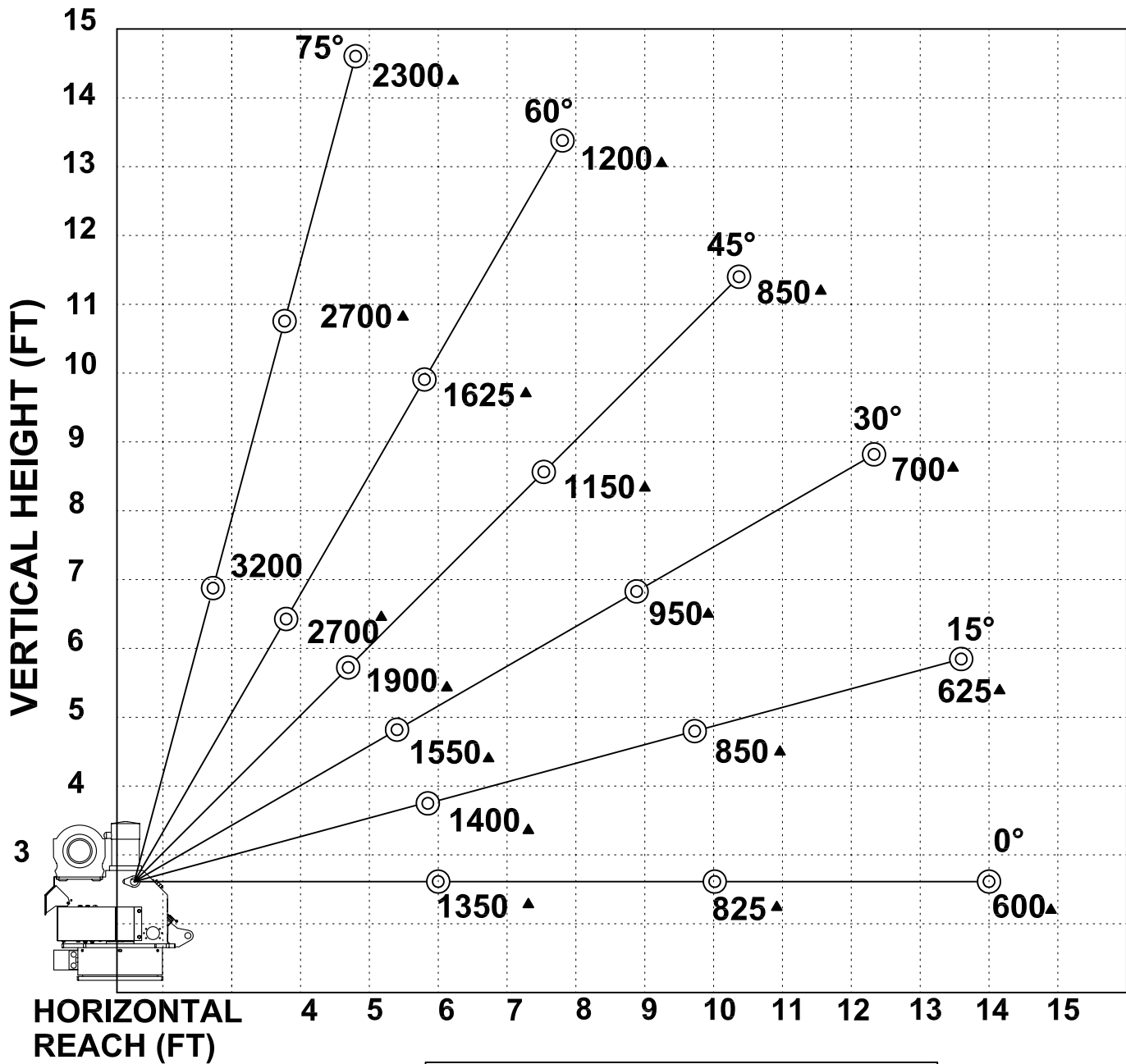


12110 BEST PLACE  
CINCINNATI OH 45241  
800.226.2238  
FAX 513.326.5427  
[www.venturo.com](http://www.venturo.com)

Specifications subject to change without notice.



## ET8K(X) MAXIMUM CAPACITY CHART



**MUST USE SNATCH BLOCK  
FOR LOADS OF 1600 LBS.  
AND GREATER**