



ET12KX

ET12K

FEATURES

- * 3,500 lb. Maximum Lifting Capacity
- * 12,000 ft.-lb. Moment Rating
- * Electric-Hydraulic Power
- * Manual or Hydraulic Boom Extension 7-11 ft.
- * Manual Boom Extension 11-15 ft.
- * Continuous Power Rotation
- * Meets ANSI B30.5 Safety Standards
- * Meets OSHA 1910.180 Requirements

STANDARD EQUIPMENT

- * Capacity Overload Shut-Off System
- * Anti-Two-Blocking System
- * 65 ft. of 1/4" Aircraft-Quality Wire Rope
- * Remote Control Pendant: 25 ft. Cord and Quick Disconnect
- * Snatch Block with Swivel Hook Safety Latch
- * Master Disconnect Switch
- * Battery Cable: 25 ft.

MINIMUM REQUIREMENTS

- * 8,800 lb. GVWR Chassis
- * Outriggers
- * Electrical Power Source: 12V DC

LIFTING CAPACITIES

REACH (FT.)	CAPACITY (LBS.)
4	3,500
7	1,800
11	1,100
15	800

OPTIONAL EQUIPMENT

- * Radio Remote Controls
- * Manual Outrigger Packages
- * Mounting Pedestal for Platform Bodies
- * Boom Rests
- * Cable Overhaul Weight

Specifications subject to change without notice.



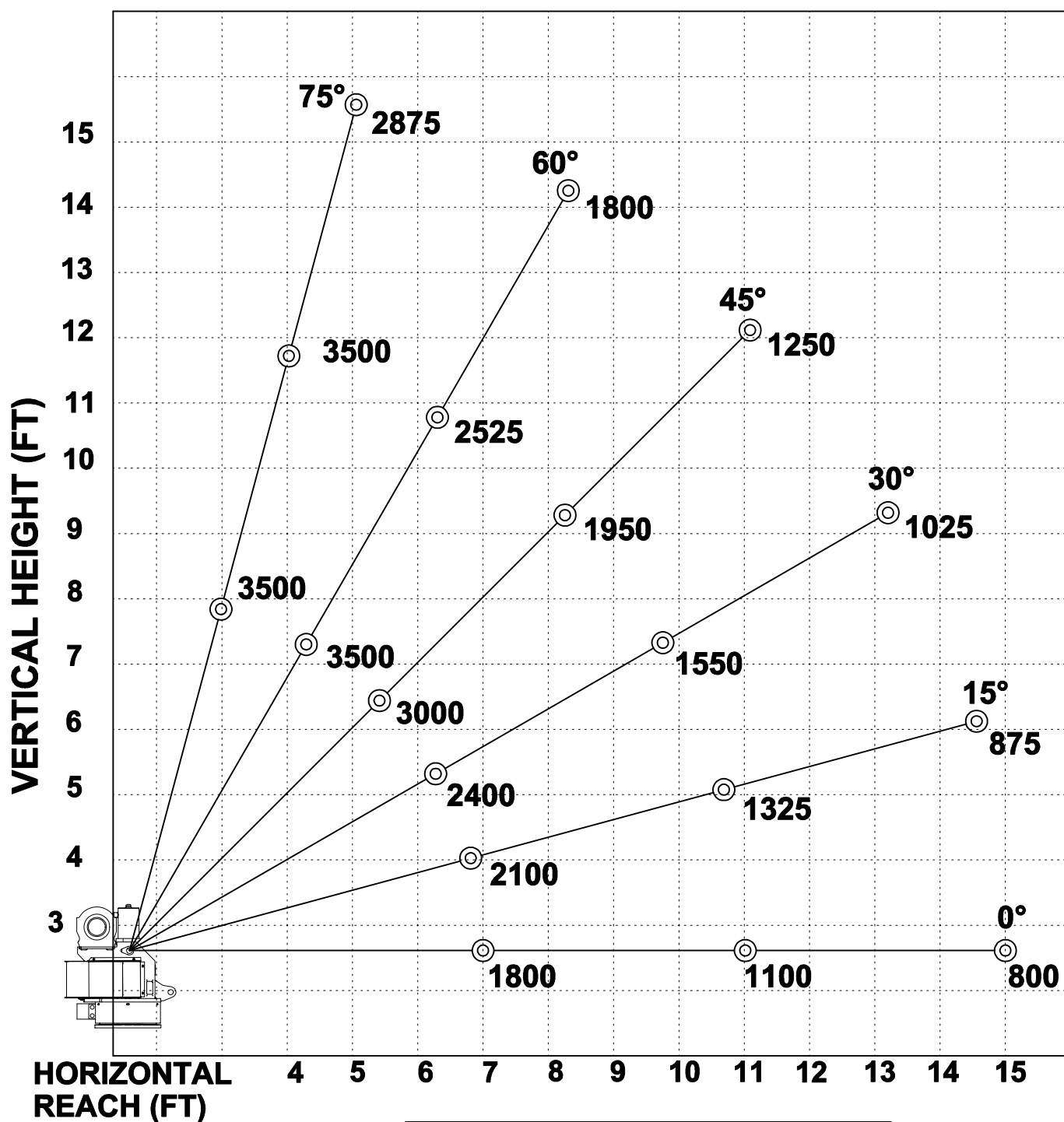
RUGGED. RELIABLE. REAL.

12110 Best Place Cincinnati, OH 45241
800-226-2238 internetsales@venturo.com
www.venturo.com

DISTRIBUTED BY:



ET12K(X) MAXIMUM CAPACITY CHART



**MUST USE SNATCH BLOCK
FOR LOADS OF 1750 LBS.
AND GREATER**