



90 D



Diesel operated Arm Lift Mobile Crane  
Max. Capacity **kg. 9.000**



TECHNICAL DATA

Valla	
OUT REACH (mm)	CAPACITY (kg)
2.000	5.900
3.000	3.500
5.000	2.000



**CRANE FRAME:** Six-wheele frame fabricated from preformed and welded steel plate with built-in counterweight.

**ENGINE:** Diesel 37 Kw , 4 cylinders, water cooled with electric starter and automatic fuel switch off.

**TRANSMISSION:** Automatic (hydrostatic) “automotive”. Differential axle. Max speed 13 Km/h.

**BRAKES:** foot hydraulically operated brakes (disc on front, drums on rear wheels). Parking hand brake mechanically operated.

**SUSPENSION:** oscillating rear axle with mechanical lock.

**STEERING:** power steering with hydraulic cylinder and 140° articulation. Safety valves and filter.

**WHEELS:** Nr. 2 rear pneumatic 23 x 9 R10” - Nr. 4 front superelastic 23 x 10-12”

**BOOM:** boom fabricated from preformed and welded quality steel plate. Nr.4 telescoping sections: 1 fixed; 3 hydraulically telescoping. Fitted with nylon wear pads adjustable wear pads on the sides.

**BOOM CONTROL:** Distributor by proportional levers. Motor driven pump 5kW 48V.

**LMI:** Electronic Load Moment Indicator. Display showing lifted load, max allowed load, tilting percentage, operating radius, angle, telescope and light indicators on the operative mode.

**TOTAL WEIGHT:** approx. kg. 6.100 **MAX. CAPACITY:** kg. 9.000

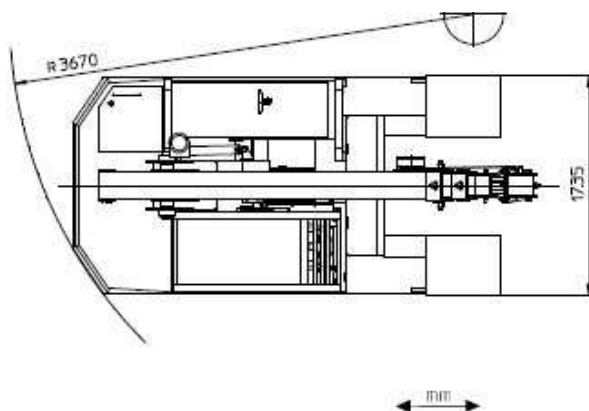
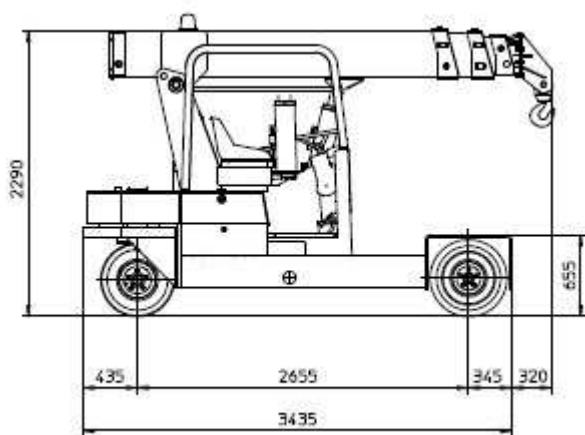
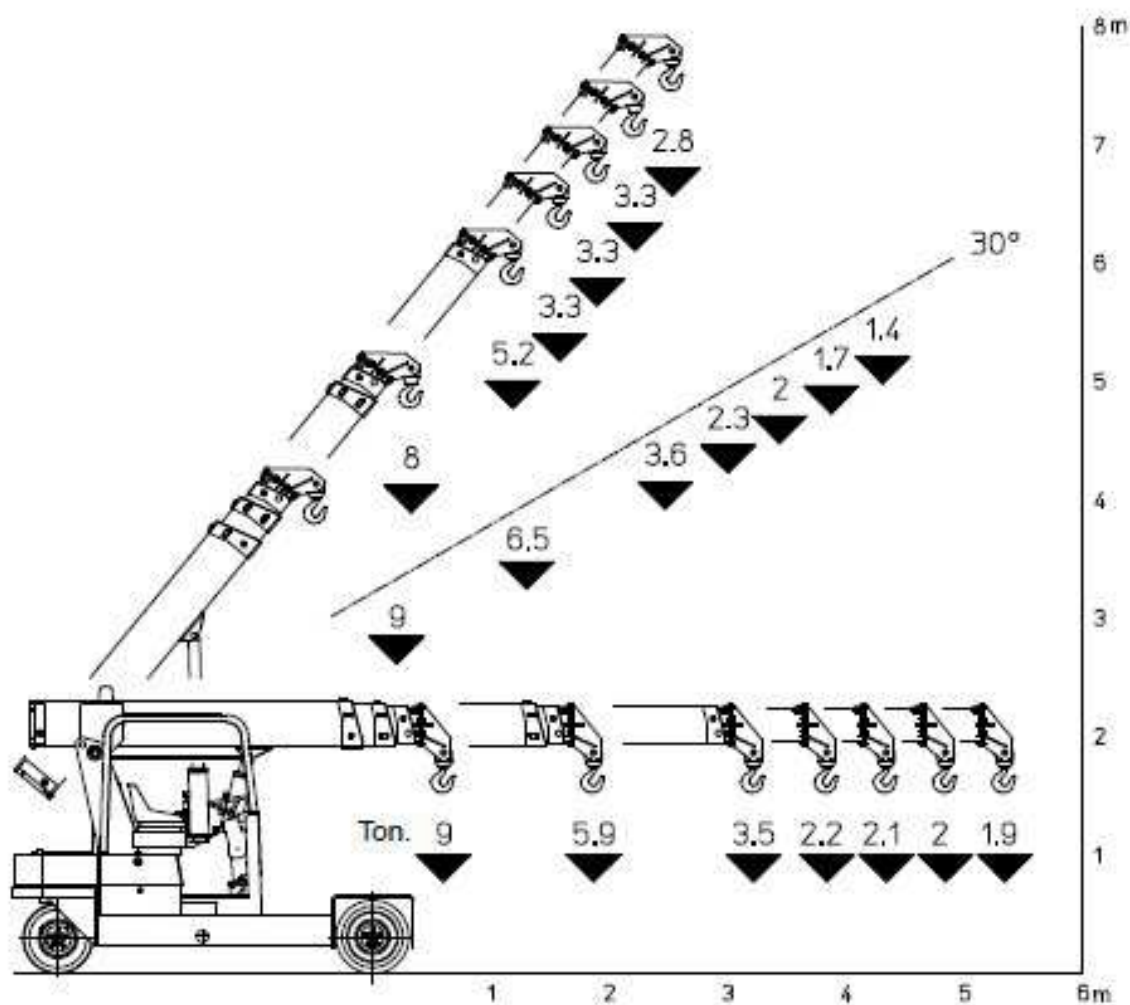
**Options on request:** hydraulic winch; chain hoists; carry-deck; manual and hydraulic jibs; cable remote control; radio remote control; working light; fire extinguisher.



# MANITEX VALLA 90 D



Crane complies with the following standard:  
 -2006/42/CE  
 -UNIEN13000  
 -I.S.P.E.S.L.



Valla – division of CVS Ferrari Srl  
 Via Piacenza, 45 – 29010 Calendasco – Piacenza – ITALIA  
 Tel. 0039 0523 762025 – 762004 – Fax 0039 0523 760531  
 Internet: [www.valla.com](http://www.valla.com) – email: [info@valla.com](mailto:info@valla.com)