



# Valla 75 D



**Self Diesel operated Mobile Crane**  
**Max. Capacity Lbs. 16,500**



## Valla

OUTREACH (Ft)	CAPACITY (Lbs.)
6	8,400
9	5,200
15	2,400

## TECHNICAL DATA

**CRANE FRAME:** six-wheelers frame fabricated from preformed and welded steel plate with built-in counterweight.

**DRIVE:** by 4 cylinders, 38 kW water cooled turbo diesel engine.

**BRAKES:** hydraulically controlled foot operating brake. Lever mechanically controlled parking brake.

**SUSPENSION:** oscillating rear axle with mechanical lock.

**STEERING:** power steering with hydraulic cylinder and 140° articulation. Safety valves and filter.

**WHEELS:** nr. 2 rear superelastic 6.50 R10 and nr. 4 front superelastic 21 x 8 R9.

**BOOM:** boom fabricated from preformed and welded quality steel plate. Nr.4 telescoping sections: 1 fixed; 3 hydraulically telescoping. Fitted with nylon wear pads adjustable wear pads on the sides.

**HYDRAULIC SYSTEM:** in own enclosed circuit powered by a gear pump through proportional distributor controlled by joystick. Fitted with safety valves and filters on all boom operations. Maximum hydraulic pressure 200 Bar.

**LMI:** electronic Load Moment Indicator. Display showing lifted load, max allowed load, tilting percentage, operative radius, angle, telescope and light indicators on the operative mode.

**TOTAL WEIGHT:** approx. Lbs. 15,000

**MAX. CAPACITY:** Lbs. 16,500

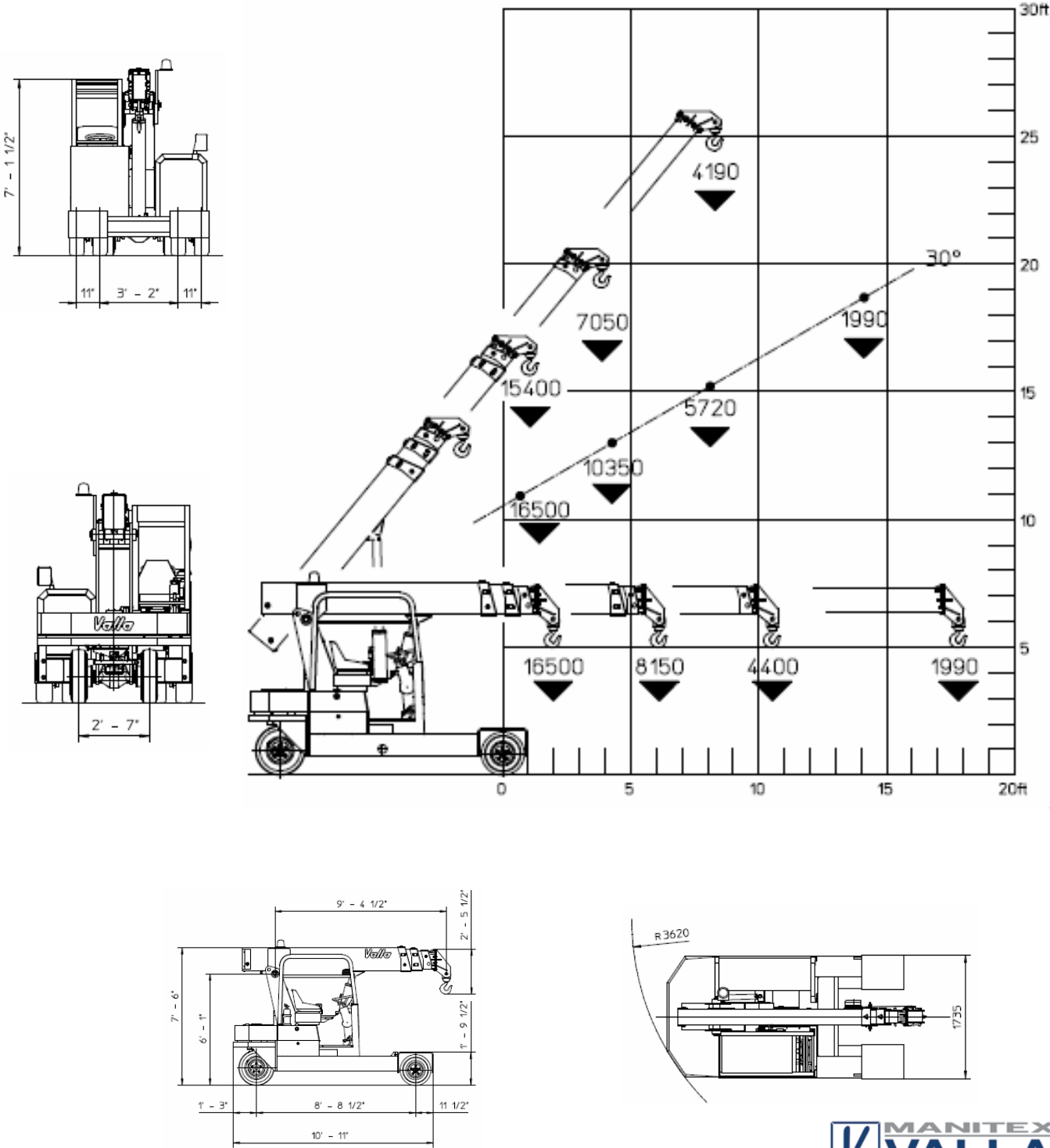
**Options on request:** hydraulic winch; chain hoists; carry-deck; manual and hydraulic jibs; cable remote control; radio remote control; man bucket and relevant certification as aerial platform; full set of road lights; non marking tires.



Data subject to be changed without any previous notice. Pictures may differ from technical description.



VALLA mobile crane mod. 75D complies with the following standards:  
-2006/42/CE  
-UNIEN13000  
-I.S.P.E.S.L.



Data subject to be changed without any previous notice. Pictures may differ from technical description.

Lbs./ft



Valla a division of CVS Ferrari Srl  
Via Piacenza, 45 - 29010 Calendasco (Piacenza) - ITALIA  
Tel. +39 0523 762025 / 752004 - Fax +39 0523 760531  
e-mail: [info@valla.com](mailto:info@valla.com) - [www.valla.com](http://www.valla.com)