



**Diesel operated Arm Lift Mobile Crane**  
**Max. Capacity Kg. 7.500**



Valla	
OUT REACH (mm)	CAPACITY (kg)
2.000	<span style="color: red;">3.700</span>
3.000	<span style="color: red;">2.000</span>
5.000	<span style="color: red;">900</span>

**TECHNICAL DATA**

**CRANE FRAME:** Six-wheele frame fabricated from preformed and welded steel plate with built-in counterweight.

**TRACTION:** by 4 cylinders, water cooled turbo diesel engine 38 HP – 28,5 kW

**BRAKES:** hydraulically controlled foot operating brake. Lever mechanically controlled parking brake.

**SUSPENSION:** oscillating rear axle with mechanical lock.

**STEERING:** power steering with hydraulic cylinder and 140° articulation. Safety valves and filter.

**WHEELS:** Nr. 2 rear pneumatic 6.50 R10" and Nr. 4 front superelastic 21 x 8 R9"

**BOOM:** boom fabricated from preformed and welded quality steel plate. Nr.4 telescoping sections: 1 fixed; 3 hydraulically telescoping. Fitted with nylon wear pads adjustable wear pads on the sides.

**HYDRAULIC SYSTEM:** in own enclosed circuit powered by a gear pump through proportional distributor controlled by joystick. Fitted with safety valves and filters on all boom operations. Maximum hydraulic pressure 200 Bar.

**LMI:** Electronic Load Moment Indicator. Display showing lifted load, max allowed load, tilting percentage, operative radius, angle, telescope and light indicators on the operative mode.

**TOTAL WEIGHT:** approx. kg. 6.100

**MAX. CAPACITY:** kg. 7.500

**Options on request:** hydraulic winch; chain hoists; carry-deck; manual and hydraulic jibs; cable remote control; radio remote control; working light; fire extinguisher.

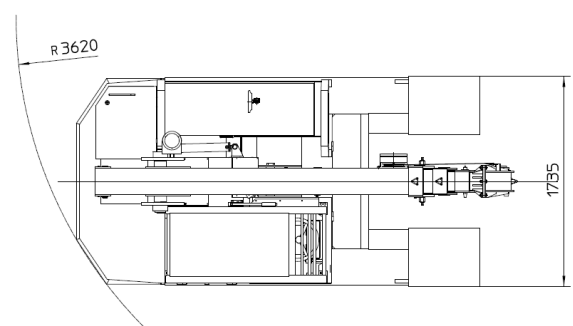
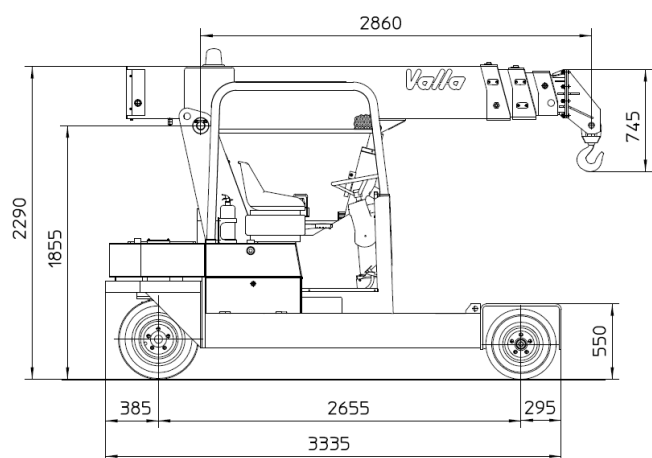
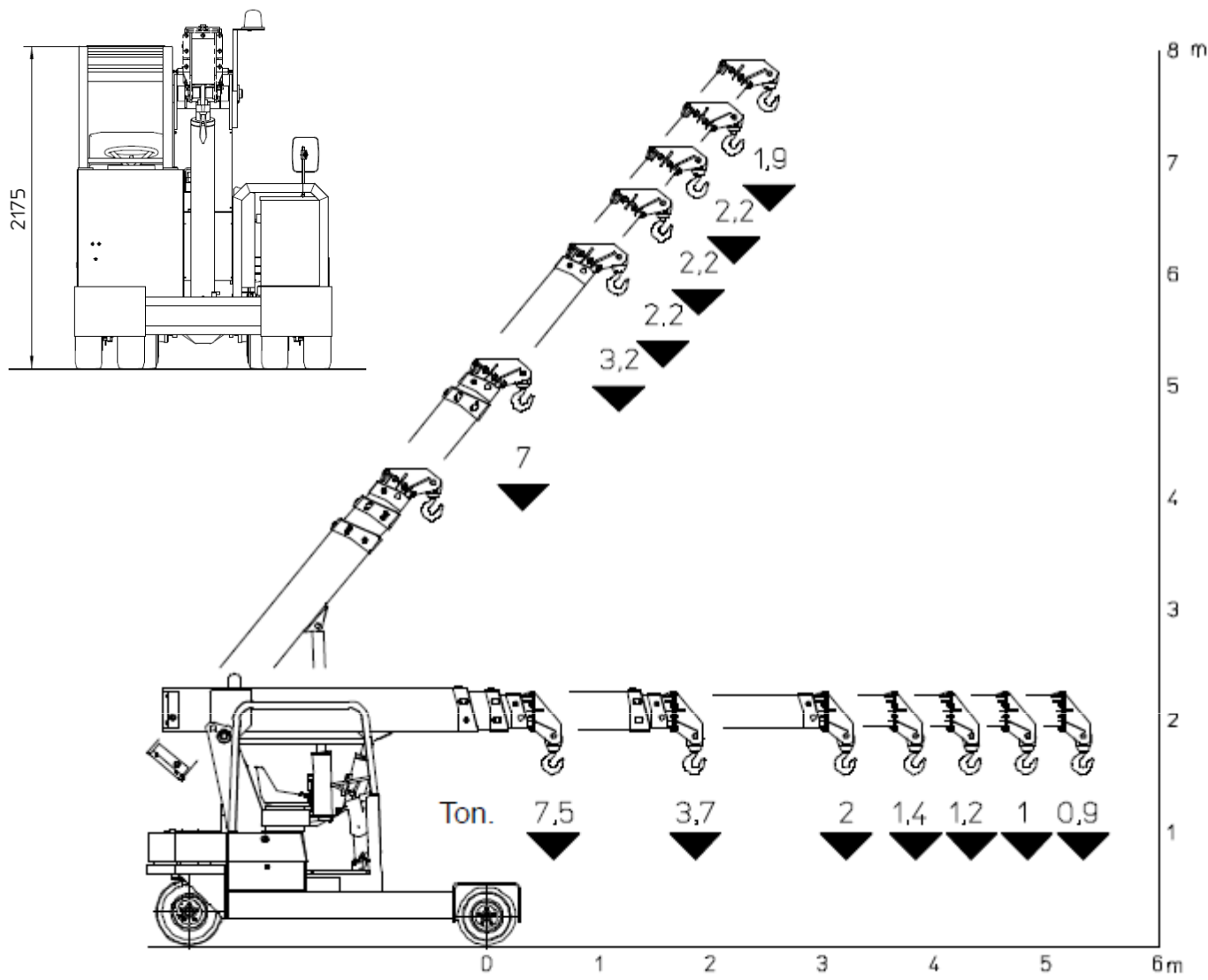




# MANITEX VALLA 75 D



Complies with the following standard:  
-2006/42/CE  
-UNEN13000  
-I.S.P.E.S.L.



mm.



Valla – division of CVS Ferrari Srl  
Via Piacenza, 45 – 29010 Calendasco – Piacenza – ITALIA  
Tel. 0039 0523 762025 – 762004 – Fax 0039 0523 760531  
Internet: [www.valla.com](http://www.valla.com) – email: [info@valla.com](mailto:info@valla.com)

Data subject to be changed without any previous notice. Pictures may differ from technical description.