



Electric battery operated Mobile Crane
Max. Capacity Lbs. 11,000



Valla	
OUTREACH (Ft)	CAPACITY (Lbs.)
6	4,600
9	3,800
15	2,000

TECHNICAL DATA

CRANE FRAME: five-wheelers frame fabricated from preformed and welded steel plate with built-in counterweight .

DRIVE: by DC 7 kw 48V reversible electric motor, controlled by inverter, electro magnetic control on disk brake.

BATTERY: 48V 575Ah battery, battery meter on dashboard.

BRAKES: hydarulically controlled foot operating brake. Lever mechanically controlled parking brake.

STEERING: power steering with hydraulic motor and gear 180° . Safety valves and filter.

WHEELS: nr. 1 rear pneumatic 250/60 R12 nr. 4 front superelastic 18 x 7 R8.

BOOM: boom fabricated from preformed and welded quality steel plate. Nr.4 telescoping sections: 1 fixed; 2 hydraulically telescoping and 1 manually telescoping. Fitted with nylon wear pads adjustable wear pads on the sides.

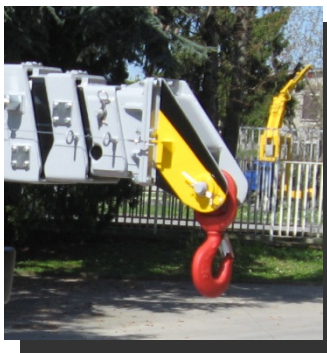
BOOM CONTROL: distributor by proportional levers. Motor driven pump 5kW 24V.

LMI: electronic Load Moment Indicator. Display showing lifted load, max allowed load, tilting percentage, operating radius, angle, telescope and light indicators on the operative mode.

TOTAL WEIGHT: approx. Lbs. 12,000 **MAX. CAPACITY:** Lbs. 11,000

Options on request: hydraulic winch; chain hoists; carry-deck; battery charger (on board and stand-alone); manual and hydraulic jibs; cable remote control; radio remote control; fully hydraulic boom; man bucket and relevant certification as aerial platform; full set of road lights; non marking tires.

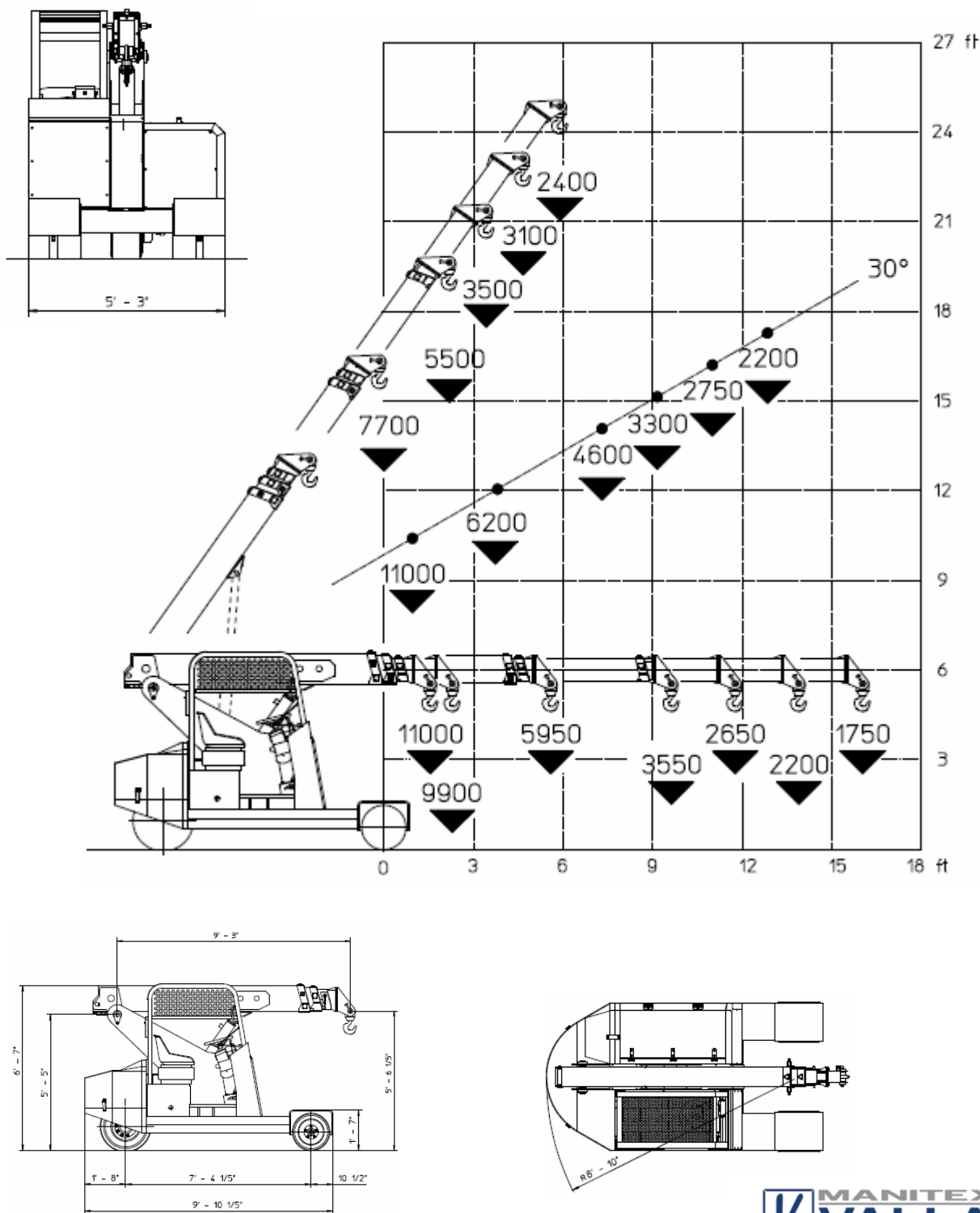
Narrow version (width 4,6 feet) **available.**



Data subject to be changed without any previous notice. Pictures may differ form technical description.



VALLA mobile crane mod. 50E complies with the following standards:
-2006/42/CE
-UNIEN13000
-I.S.P.E.S.L.



Data subject to be changed without any previous notice. Pictures may differ from technical description.

Lbs./ft



Valla a division of CVS Ferrari Srl
Via Piacenza, 45 - 29010 Calendasco (Piacenza) - ITALIA
Tel. +39 0523 762025 / 752004 - Fax +39 0523 760531
e-mail: info@valla.com - www.valla.com