



50 E



Electric battery operated Arm Lift Mobile Crane
Max. Capacity **Kg. 5.000**



Valla

OUTREACH (mm)	CAPACITY (kg)
2.000	2.700
3.000	1.600
5.000	800

TECHNICAL DATA

CRANE FRAME: Five-wheel frame fabricated from preformed and welded steel plate with built-in counterweight .

TRACTION: by DC 7 kw 48V reversible electric motor, controlled by inverter, electro magnetic control on disk brake.

BATTERY: 48V 575Ah battery, battery meter on dashboard.

BRAKES: hydarulically controlled foot operating brake. Lever mechanically controlled parking brake.

DRIVE: by 180° steering helm. Complete with safety device on backward.

WHEELS: Nr. 1 rear pneumatic 250/60 R12 Nr. 4 front superelastic 16 x 7 R8”

BOOM: boom fabricated from preformed and welded quality steel plate. Nr.4 telescoping sections: 1 fixed; 2 hydraulically telescoping and 1 manually telescoping. Fitted with nylon wear pads adjustable wear pads on the sides.

BOOM CONTROL: Distributor by proportional levers. Motor driven pump 5kW 24V.

LMI: Electronic Load Moment Indicator. Display showing lifted load, max allowed load, tilting percentage, operating radius, angle, telescope and light indicators on the operative mode.

TOTAL WEIGHT: approx. kg. 5.500 **MAX. CAPACITY:** kg. 5.000

Options on request: hydraulic winch; chain hoists; carry-deck; battery charger (on board and stand-alone); manual and hydraulic jibs; cable remote control; radio remote control; working light; fire extinguisher; fully hydraulic boom.

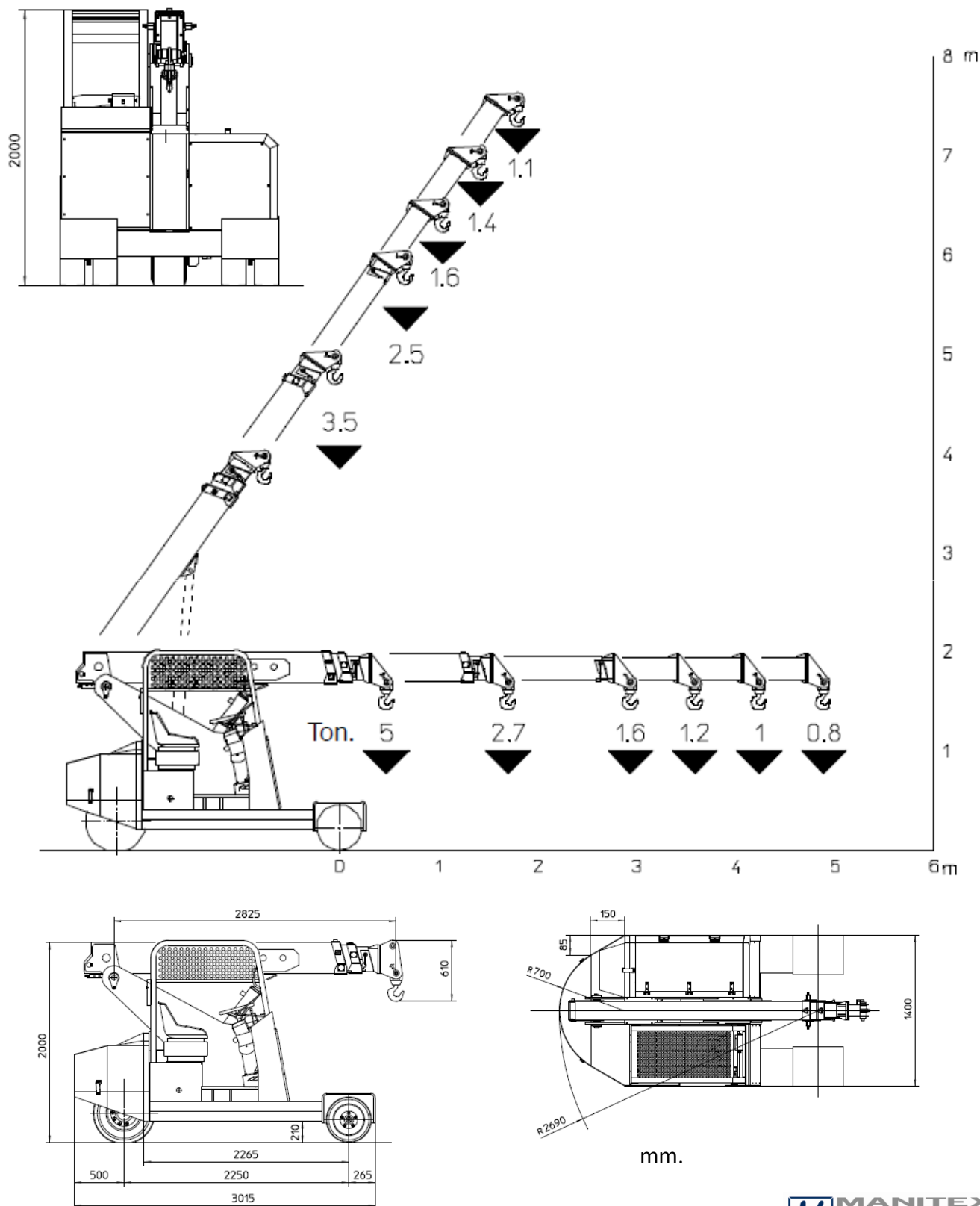




50 E



The VALLA mobile crane mod. 50 E
complies with the following standards:
-2006/42/CE
-UNIEN13000
-I.S.P.E.S.L.



Data subject to be changed without any previous notice. Pictures may differ from technical description.



Sede Legale:
Via Emilia Loc. Favorita - 29010 Roveleto di Cadeo (PC) - Italy
MANITEX INTERNATIONAL Inc. Group



Sede Operativa:
Via Piacenza, 45 - 29010 Calendasco - Piacenza - ITALIA
Tel. +39 0523 762025 - 762004 - Fax +39 0523 760531
Internet: www.valla.com - email: info@valla.com