



Electric battery operated Arm Lift Mobile Crane  
Max. Capacity **Kg. 40.000**



<b>Valla</b>	
<b>FULL CLOSE</b>	
OUT REACH (mm)	CAPACITY (kg)
3.000	19.000
5.000	10.600
7.000	7.400



<b>Valla</b>	
<b>BACK WIDE</b>	
OUT REACH (mm)	CAPACITY (kg)
3.000	21.000
5.000	11.800
7.000	8.200

TECHNICAL DATA

**CRANE FRAME:** Eight-wheel frame fabricated from preformed and welded steel plate with possibility to extended the rear power unit

**TRANSMISSION:** differential axle with reduction gear between motor and wheels running in oil bath. Travelling speed up to 8 Km/h.

**BATTERY:** 96V 1450Ah battery, battery meter on dashboard.

**BRAKES:** foot hydraulically operated brakes on 6 wheels (4 front and 2 rear wheels). Parking hand brake mechanically operated.

**SUSPENSION:** oscillating rear axle with mechanical lock.

**STEERING:** power steering operated through own hydraulic circuit by a hydraulic cylinder fitted between the articulated power unit and the crane frame allowing 120° steering fitted with safety valves and filters. 6 kW – 96 V motor driven pump.

**WHEELS:** Nr. 2 rear superelastic 400/60-15" - Nr. 6 front superelastic 355/65 R.15"

**BOOM:** boom fabricated from preformed and welded quality steel plate. Nr.4 telescoping sections: 1 fixed; 3 hydraulically telescoping. Fitted with nylon wear pads adjustable wear pads on the sides.

**BOOM CONTROL:** Proportional distributor controlled with joystick. Fitted with filter and safety valves. Motor driven pump 20kW 26V.

**LMI:** Electronic Load Moment Indicator. Display showing lifted load, max allowed load, tilting percentage, operating radius, angle, telescope and light indicators on the operative mode.

**TOTAL WEIGHT:** kg. 30.000 (kg.24.000 without counterweight)

**MAX. CAPACITY:** kg. 40.000

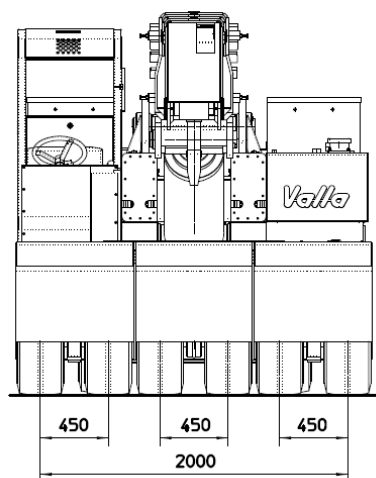
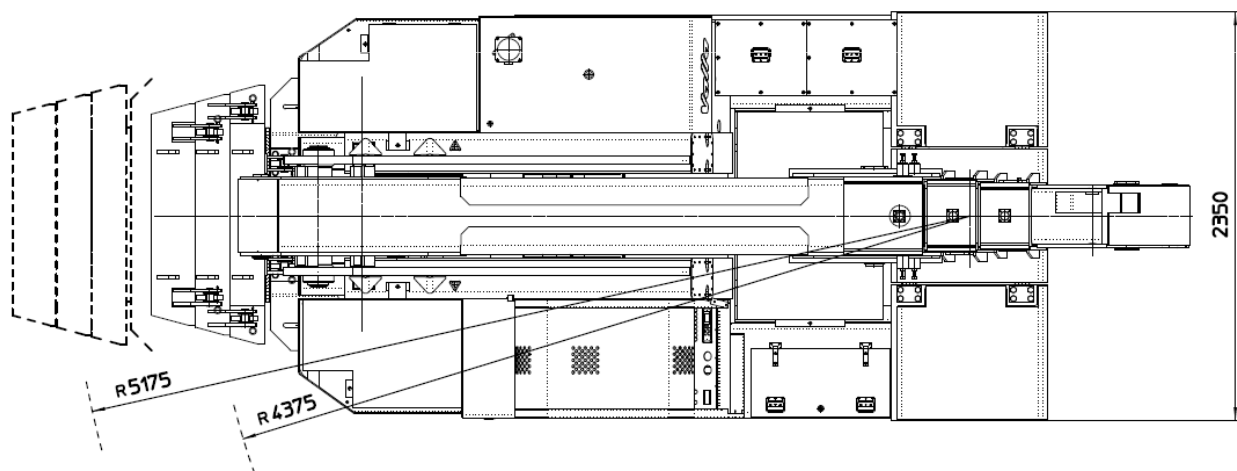
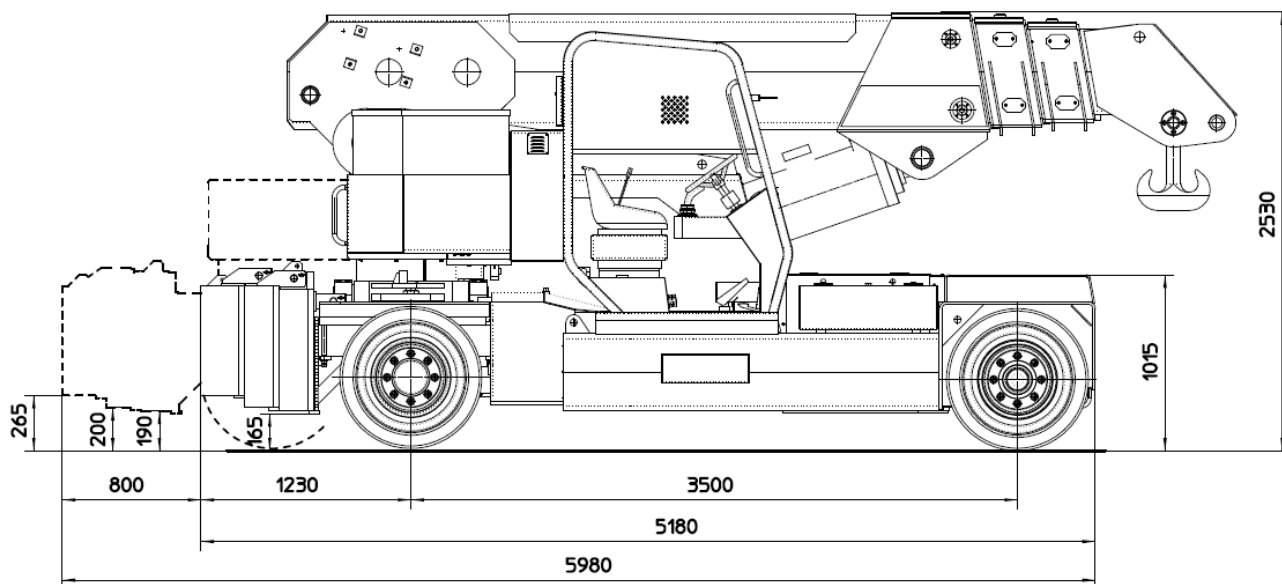
**Options on request:** hydraulic winch; chain hoists; carry-deck; battery charger (on board and stand-alone); manual and hydraulic jibs; cable remote control; radio remote control; working light; fire extinguisher.



# MANITEX VALLA 400 E



The crane complies with following std.:  
-2006/42/CE  
-UNIEN13000  
-I.S.P.E.S.L.



Data subject to be changed without any previous notice. Pictures may differ from technical description.

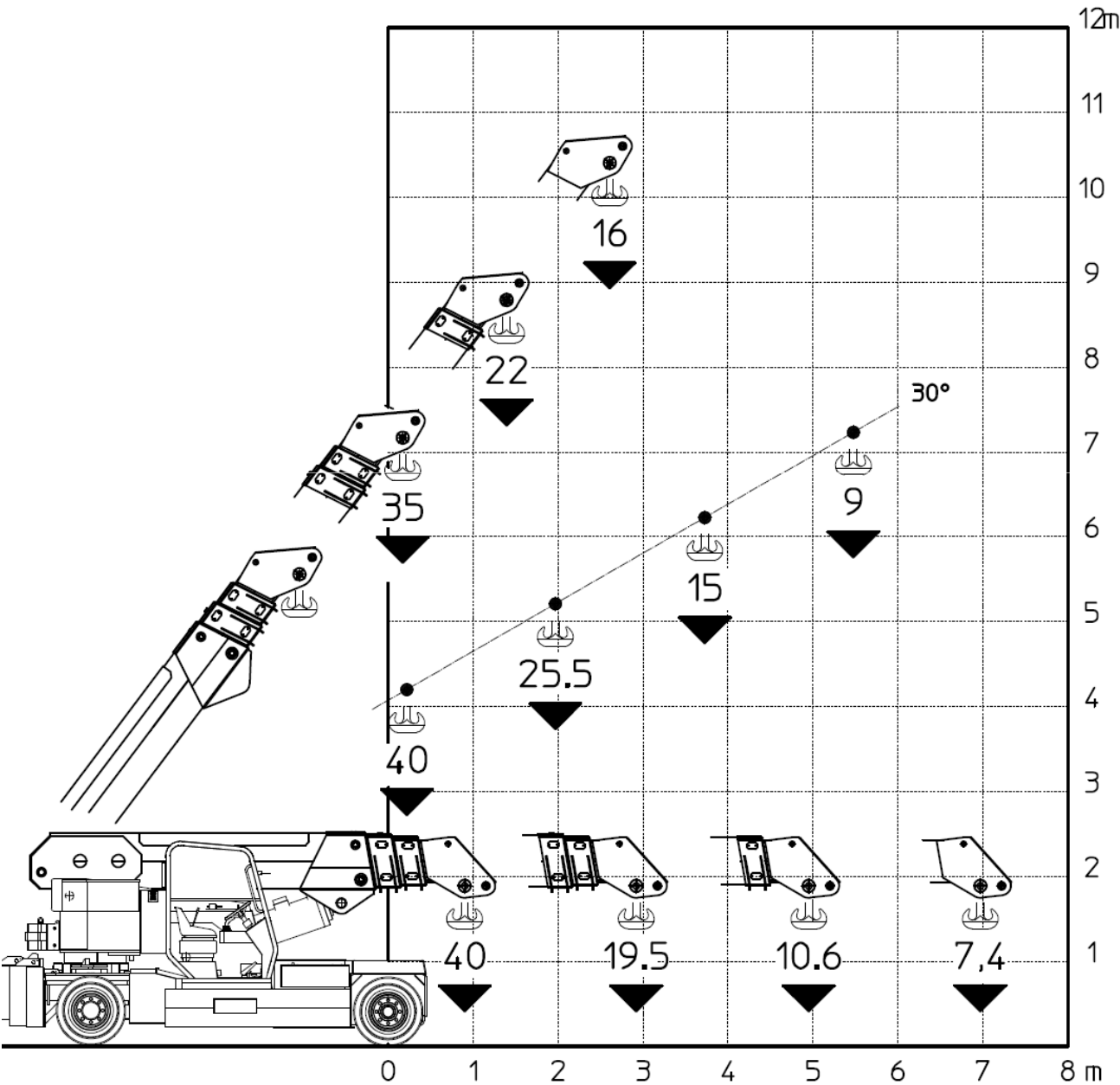


Valla – division of CVS Ferrari Srl  
Via Piacenza, 45 – 29010 Calendasco – Piacenza – ITALIA  
Tel. 0039 0523 762025 – 762004 – Fax 0039 0523 760531  
Internet: [www.valla.com](http://www.valla.com) – email: [info@valla.com](mailto:info@valla.com)



The crane complies with following std.:  
-2006/42/CE  
-UNIEN13000  
-I.S.P.E.S.L.

Full close



Data subject to be changed without any previous notice. Pictures may differ from technical description.

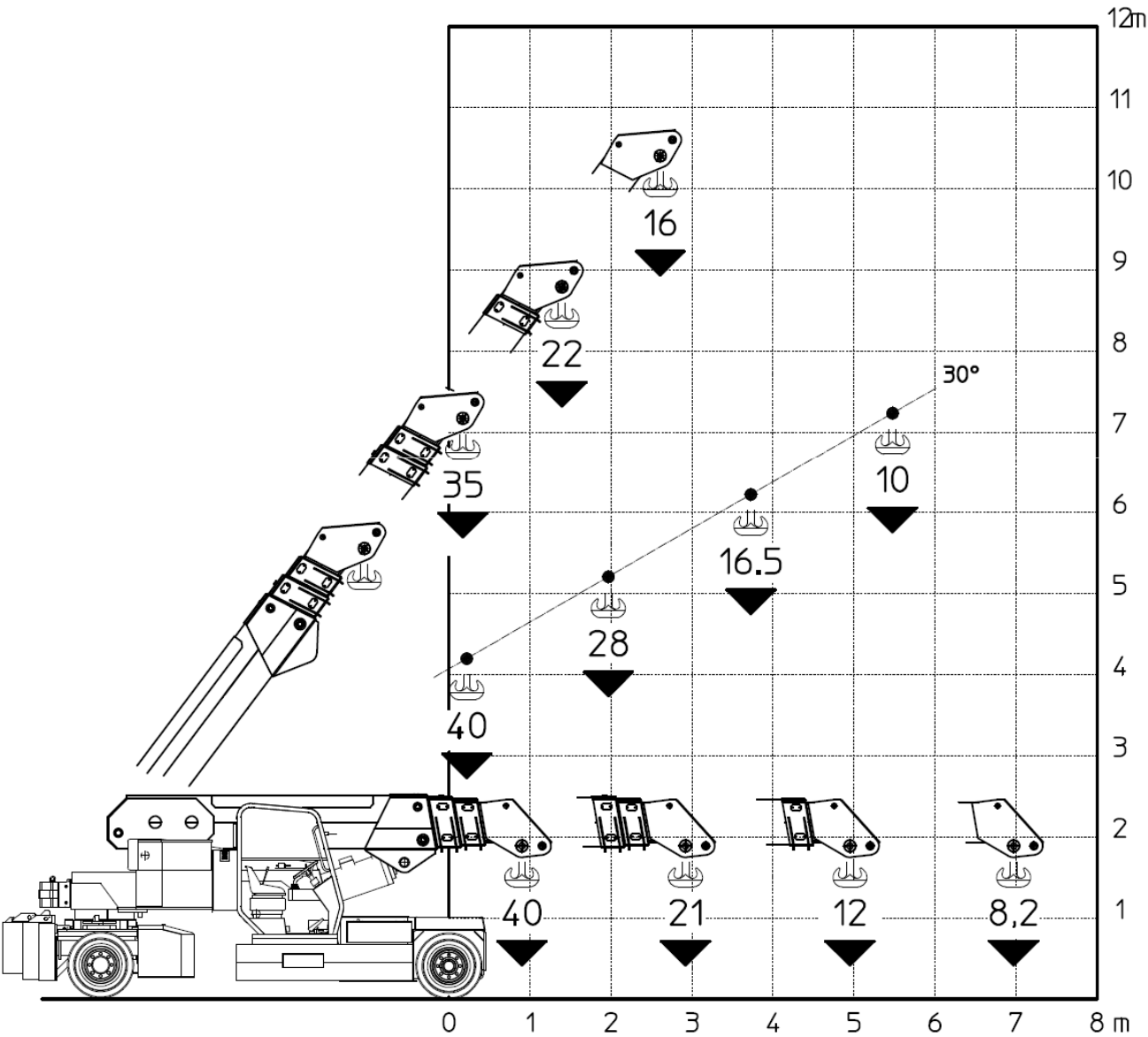


Valla – division of CVS Ferrari Srl  
Via Piacenza, 45 – 29010 Calendasco – Piacenza – ITALIA  
Tel. 0039 0523 762025 – 762004 – Fax 0039 0523 760531  
Internet: [www.valla.com](http://www.valla.com) – email: [info@valla.com](mailto:info@valla.com)



The crane complies with following std.:  
-2006/42/CE  
-UNEN13000  
-I.S.P.E.S.L.

Back wide



Data subject to be changed without any previous notice. Pictures may differ from technical description.



Valla – division of CVS Ferrari Srl  
Via Piacenza, 45 – 29010 Calendasco – Piacenza – ITALIA  
Tel. 0039 0523 762025 – 762004 – Fax 0039 0523 760531  
Internet: [www.valla.com](http://www.valla.com) – email: [info@valla.com](mailto:info@valla.com)