



# Valla 400 D



**Self Diesel operated Mobile Crane**  
**Max. Capacity Lbs. 88,000**



**Valla**

OUTREACH (Ft)	CAPACITY (Lbs.)
6	88,000
18	24,000
29	14,000



## TECHNICAL DATA

**CRANE FRAME:** fabricated from preformed and welded steel plate with built-in counterweight.

**ENGINE:** diesel 6 cylinders motor.

**ELECTRIC SYSTEM:** 24 V.

**TRANSMISSION:** automatic torque converter – 3 gear forward + 3 gear reverse; max speed up to 25 km/h – hydraulic pump PTO.

**BRAKES:** service hydraulic (disk brakes), parking hydraulic.

**STEERING:** power steering operated through own hydraulic circuit. Fitted with safety valves and filter.

**CAB:** automotive type.

**WHEELS:** nr. 4 on drive axle 14.00 – 24 + nr. 2 on steering axle.

**HYDRAULIC SYSTEM:** electric proportional distributor controlled with joystick. Fitted with filter and safety valves. Maximum hydraulic pressure 220 Bar.

**BOOM:** boom fabricated from preformed and welded quality steel plate. Nr.4 telescoping sections: 1 fixed; 2 hydraulically telescoping. Fitted with nylon wear pads adjustable wear pads on the sides.

**WINCH:** hydraulic with cable inside the boom.

**LMI:** electronic Load Moment Indicator. Display showing lifted load, max allowed load, tilting percentage, operating radius, angle, telescope and light indicators on the operative mode.

**TOTAL WEIGHT:** approx. Lbs. 68,000      **MAX. CAPACITY:** Lbs. 88,000

**Options on request:** manual and hydraulic jibs; cable remote control; radio remote control; man bucket and relevant certification as aerial platform; non marking tires; full set of road lights.



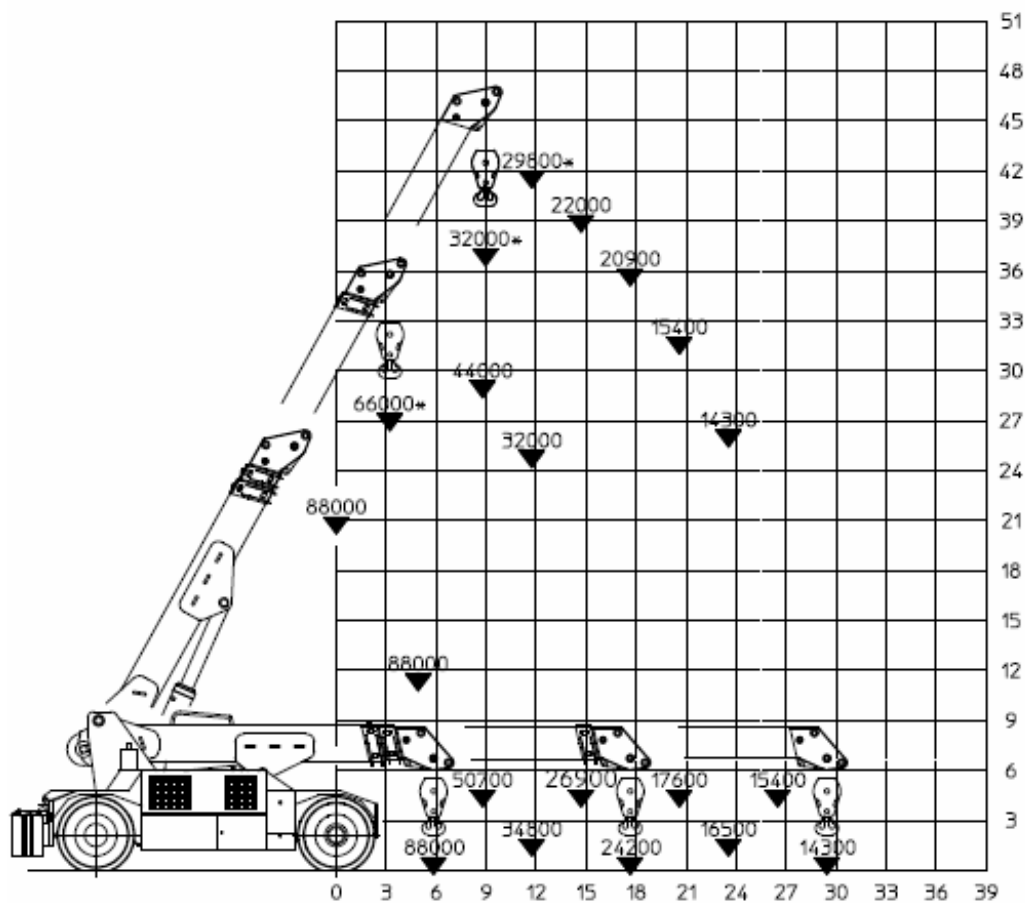
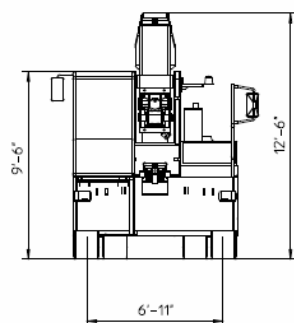
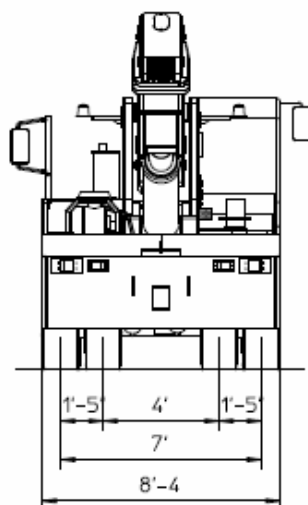
# Valla



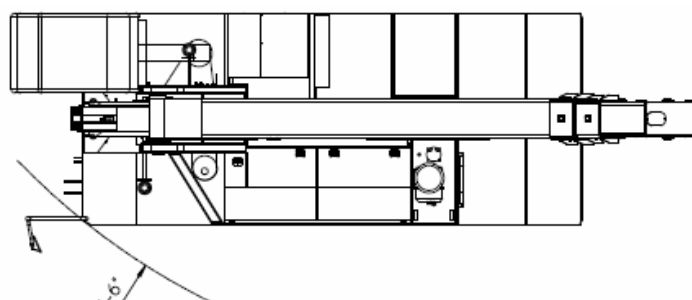
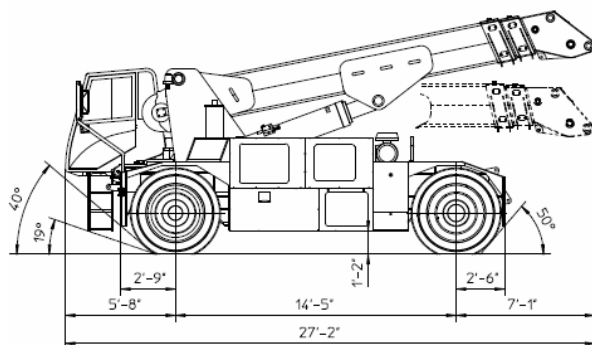
## 400 D



VALLA mobile crane mod. 400D  
complies with the following standards:  
-2006/42/CE  
-UNIEN13000  
-I.S.P.E.S.L.



↓ Max load due to balancing  
↓\* Max load due to structural resistance



Data subject to be changed without any previous notice. Pictures may differ from technical description.

Lbs./ft

**MANITEX**  
**VALLA**  
SINCE 1945 LEADER IN PICK & CARRY

Valla a division of CVS Ferrari Srl  
Via Piacenza, 45 - 29010 Calendasco (Piacenza) - ITALIA  
Tel. +39 0523 762025 / 752004 - Fax +39 0523 760531  
e-mail: [info@valla.com](mailto:info@valla.com) - [www.valla.com](http://www.valla.com)