



30 EVO



**Electric battery operated Mobile Crane**  
**Max. Capacity Lbs. 7,700**



OUTREACH (Ft)	CAPACITY (Lbs.)
3	<span style="color: red;">4,800</span>
6	<span style="color: red;">2,200</span>
15	<span style="color: red;">0,700</span>



**TECHNICAL DATA**

**CRANE FRAME:** five-wheelers frame fabricated from preformed and welded steel plate with built-in counterweight.

**DRIVE:** by AC 3,5 kw 24V reversible electric motor, controlled by inverter, electro magnetic control on disk brake.

**BATTERY:** 24V-516Ah battery, battery meter on dashboard.

**STEERING:** by 180° steering. Complete with safety device on reverse.

**WHEELS:** rear: Nr. 1 cushion 343x140; Front Nr. 4 superelastic 15 x 4 ½ R8.

**BOOM:** 5 sections boom: 1 fixed, 2 hydraulically telescopicng, 2 manually telescoping fitted with nylon wear pads. Adjustable wear pads on the sides.

**BOOM CONTROL:** distributor by proportional levers.

**LMI:** electronic Load Moment Indicator. Display showing lifted load, max allowed load, tilting percentage, operating radius, angle, telescope and light indicators on the operative mode.

**TOTAL WEIGHT:** approx. Lbs 5,300

**MAX. CAPACITY:** Lbs. 7,700

**Options on request:** brakes on front wheels, hydraulic winch; chain hoists; carry-deck; battery charger (on board and stand-alone); manual and hydraulic jibs; cable remote control; radio remote control; man bucket and relevant certification as aerial platform; non marking tires.

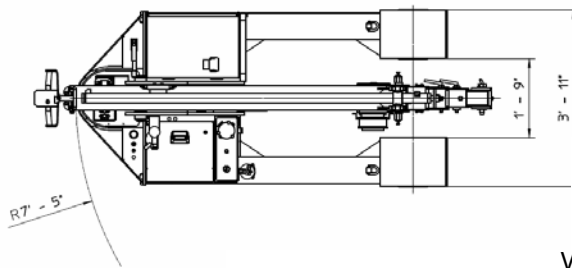
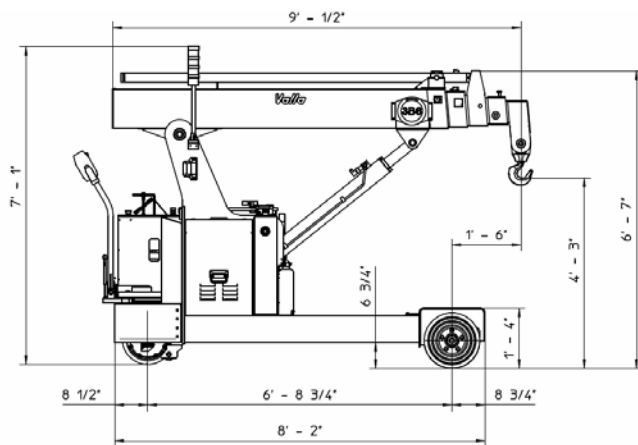
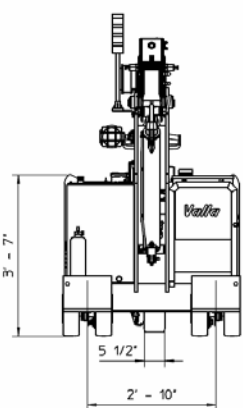
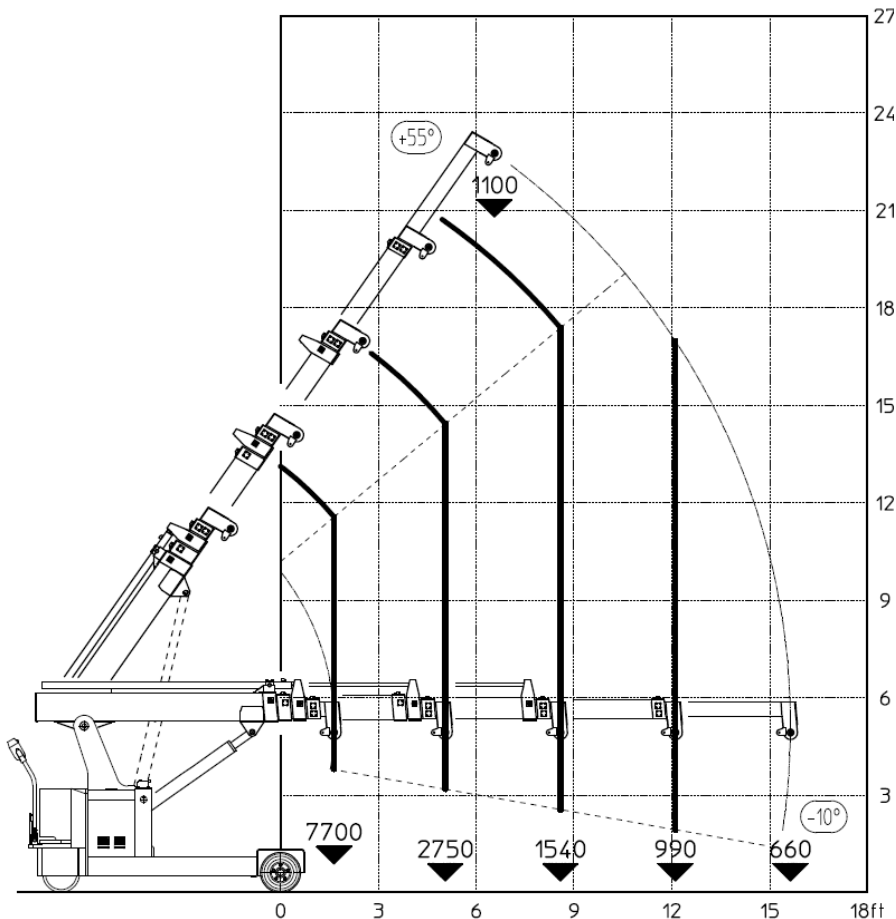
Data subject to be changed without any previous notice. Pictures may differ form technical description.



30 EVO



VALLA mobile crane mod. 30EVO  
complies with the following standards:  
-2006/42/CE  
-UNIEN13000  
-I.S.P.E.S.L.



Lbs./ft



Valla a division of CVS Ferrari Srl  
Via Piacenza, 45 - 29010 Calendasco (Piacenza) - ITALIA  
Tel. +39 0523 762025 / 752004 - Fax +39 0523 760531  
e-mail: info@valla.com - www.valla.com

Data subject to be changed without any previous notice. Pictures may differ from technical description.