



30 EVO



Electric battery operated Arm Lift Mobile Crane  
Max. Capacity **Kg. 3.500**



Valla	
OUTREACH (mm)	CAPACITY (kg)
1.000	1.900
3.000	600
4.700	300

TECHNICAL DATA

**CRANE FRAME:** Five-wheels frame fabricated from preformed and welded steel plate with built-in counterweight.

**TRACTION:** by AC 3,5 kw 24V reversible electric motor, controlled by inverter, electro magnetic control on disk brake.

**BATTERY:** 24V 516Ah battery, battery meter on dashboard.

**DRIVE:** by 180° steering bar. Complete with safety device on reverse.

**WHEELS:** Rear: Nr. 1 cushion 343x140; Front Nr. 4 superelastic 15 x 4 ½ R8".

**BOOM:** 5 sections boom: 1 fixed, 2 hydraulically telescopicng, 2 manually telescoping fitted with nylon wear pads. Adjustable wear pads on the sides.

**BOOM CONTROL:** Distributor by proportional levers.

**LMI:** Electronic Load Moment Indicator. Display showing lifted load, max allowed load, tilting percentage, operating radius, angle, telescope and light indicators on the operative mode.

**TOTAL WEIGHT:** approx. kg. 2.400 nearly                      **MAX. CAPACITY:** kg. 3.500

**Options on request:** Brakes on front wheels, hydraulic winch; chain hoists; carry-deck; battery charger (on board and stand-alone); manual and hydraulic jibs; cable remote control; radio remote control; working light; fire extinguisher.

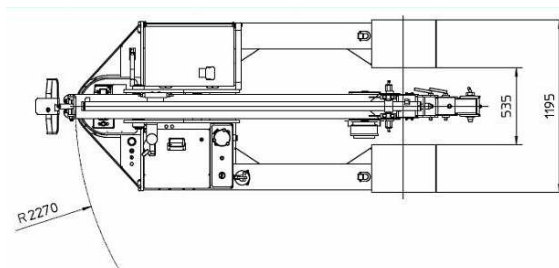
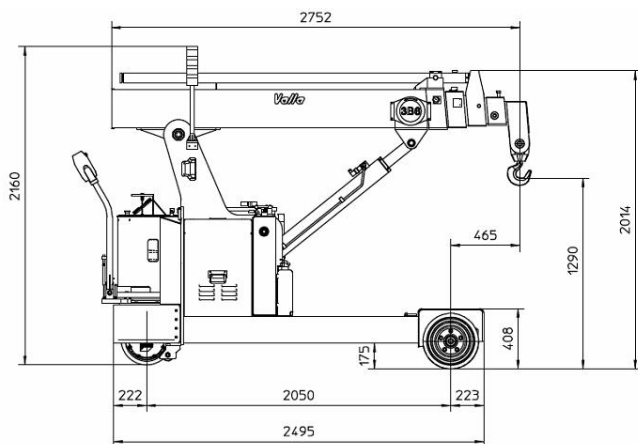
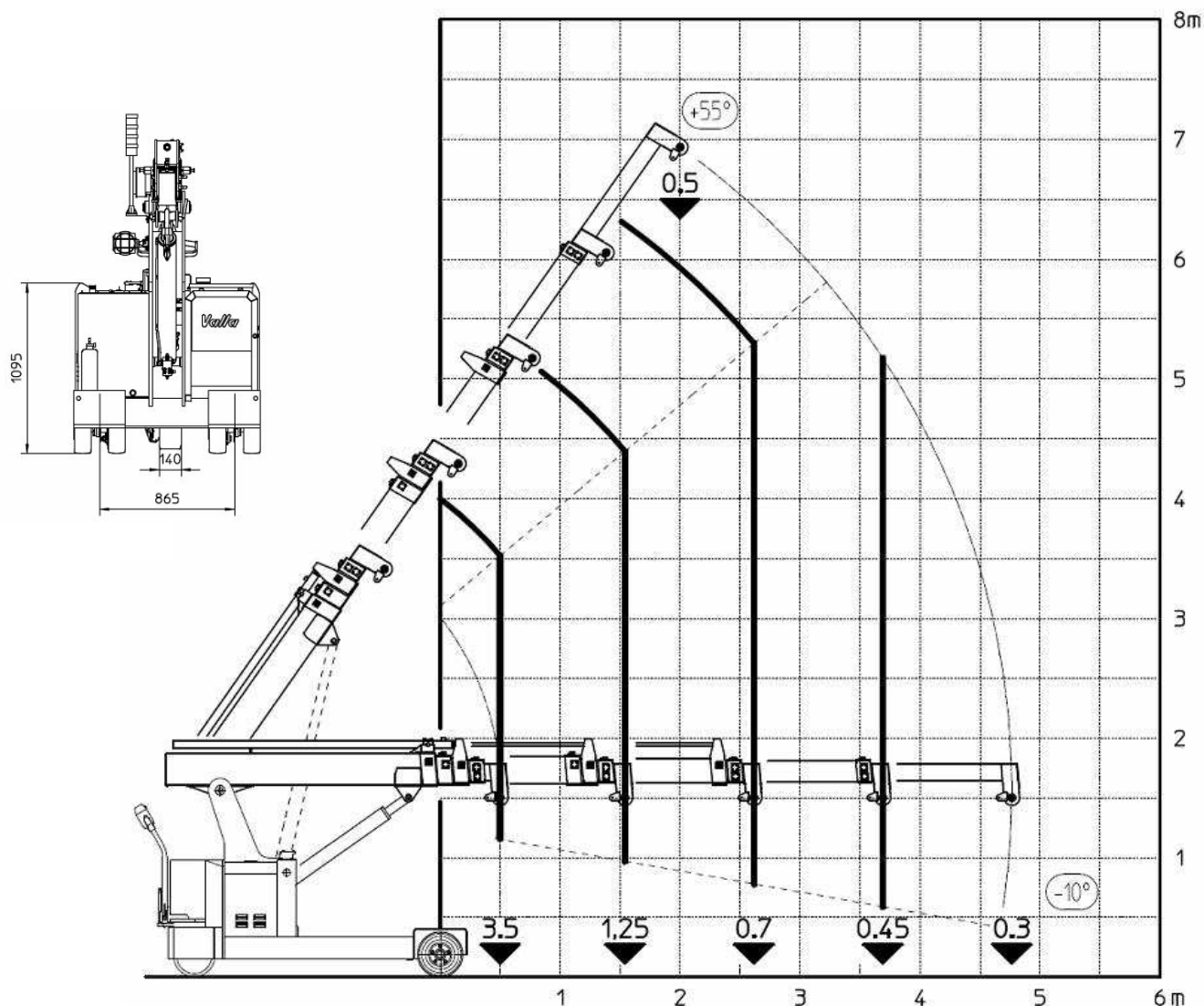




# 30 EVO



The VALLA mobile crane mod. 30 EVO complies with the following standards:  
 -2006/42/CE  
 -UNIEN13000  
 -I.S.P.E.S.L.



Data subject to be changed without any previous notice. Pictures may differ from technical description.



Valla – division of CVS Ferrari Srl  
 Via Piacenza, 45 – 29010 Calendasco – Piacenza – ITALIA  
 Tel. 0039 0523 762025 – 762004 – Fax 0039 0523 760531  
 Internet: [www.valla.com](http://www.valla.com) – email: [info@valla.com](mailto:info@valla.com)