



250 E



Electric battery operated Arm Lift Mobile Crane  
Max. Capacity **Lbs. 55,000**



TECHNICAL DATA

Valla	
OUTREACH (Ft)	CAPACITY (Lbs.)
9	26,000
15	14,000
23	9,000

**CRANE FRAME:** Eight-wheel frame fabricated from preformed and welded steel plate with built-in counterweigh.

**TRACTION:** by DC 28,5 kw 96V reversible electric motor, controlled by inverter, electro magnetic control on disk brake.

**BATTERY:** 96V 1450Ah battery, battery meter on dashboard.

**BRAKES:** foot hydraulically operated drum brakes. Parking hand brake mechanically operated.

**SUSPENSION:** oscillating rear axle with mechanical lock.

**STEERING:** power steering operated through own hydraulic circuit by a hydraulic cylinder fitted between the articulated power unit and the crane frame allowing 120° steering fitted with safety valves and filters. 6 kW – 96 V motor driven pump.

**WHEELS:** nr. 2 rear superelastic 355/65-15 - nr. 6 front superelastic 300 R.15

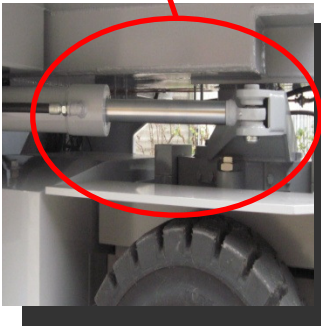
**BOOM:** boom fabricated from preformed and welded quality steel plate. Nr.4 telescoping sections: 1 fixed; 3 hydraulically telescoping. Fitted with nylon wear pads adjustable wear pads on the sides.

**BOOM CONTROL:** distributor by proportional levers. Motor driven pump 18.5kW 96V.

**LMI:** electronic Load Moment Indicator. Display showing lifted load, max allowed load, tilting percentage, operating radius, angle, telescope and light indicators on the operative mode.

**TOTAL WEIGHT:** approx. Lbs. 57,000      **MAX. CAPACITY:** Lbs. 55,000

**Options on request:** hydraulic winch; chain hoists; carry-deck; battery charger (on board and stand-alone); manual and hydraulic jibs; cable remote control; radio remote control; full set of road lights; man bucket and relevant certification as aerial platform; non marking tires.



Data subject to be changed without any previous notice. Pictures may differ from technical description.



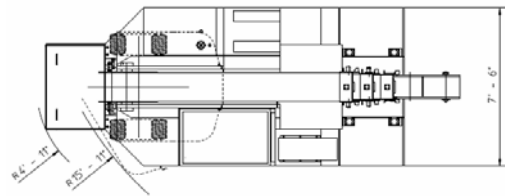
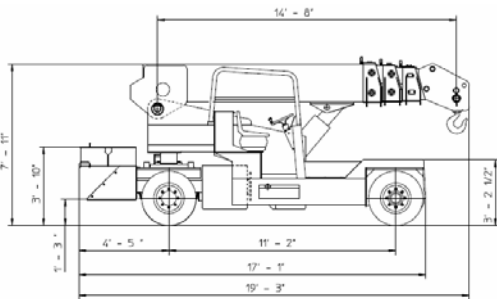
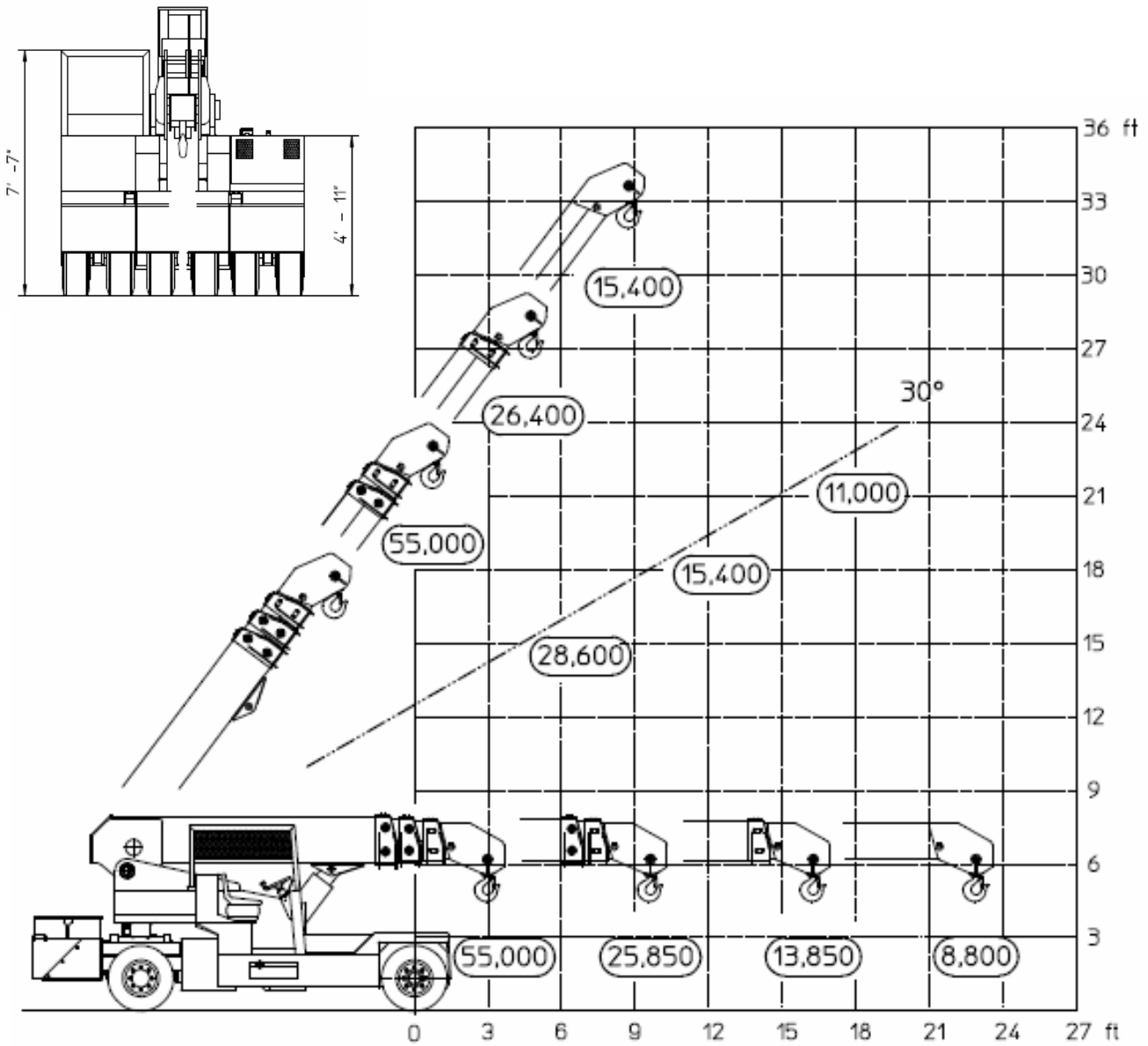
Valla



250 E



The VALLA mobile crane mod. 250E  
complies with the following standards:  
-2006/42/CE  
-UNIEN13000  
-I.S.P.E.S.L.



Lbs./ft



Valla a division of CVS Ferrari Srl  
Via Piacenza, 45 - 29010 Calendasco (Piacenza) - ITALIA  
Tel. +39 0523 762025 / 752004 - Fax +39 0523 760531  
e-mail: [info@valla.com](mailto:info@valla.com) - [www.valla.com](http://www.valla.com)

Data subject to be changed without any previous notice. Pictures may differ from technical description.