



Valla



25 EL

Electric battery operated Mobile Crane
Max. Capacity **Lbs. 4,950**



Valla

OUTREACH (Ft)	CAPACITY (Lbs.)
3	3,000
4,5	1,800
8	1,000



TECHNICAL DATA

CRANE FRAME: three-wheelers frame fabricated from preformed and welded steel plate with built-in counterweight.

TRACTION: by AC 3kw 48V reversible electric motor, controlled by inverter, electro magnetic control on disk brake.

BATTERY: 48V 200Ah battery, battery meter on dashboard.

DRIVE: by 180° steering rudder. Steering 700W 48V electric motor electronically controlled. Complete with safety device on reverse.

WHEELS: nr. 1 rear cushion 305x135 e Nr. 2 front 18x7-R8 superelastic.

BOOM: three hydraulically telescoping sections with sequential hydraulic telescope by double internal cylinder fitted with nylon wear pads. Adjustable wear pads on the sides.

BOOM CONTROL: by electronic proportional joystick distributor. 4 kW 48V motor pump.

LMI: electronic Load Moment Indicator. Display showing lifted load, max allowed load, tilting percentage, operating radius, angle, telescope and light indicators on the operative mode.

TOTAL WEIGHT: approx. Lbs. 4,300 nearly **MAX. CAPACITY:** Lbs. 4,950

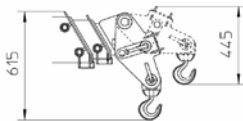
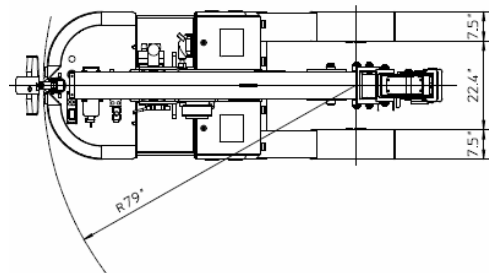
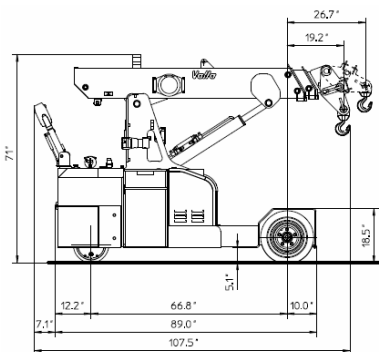
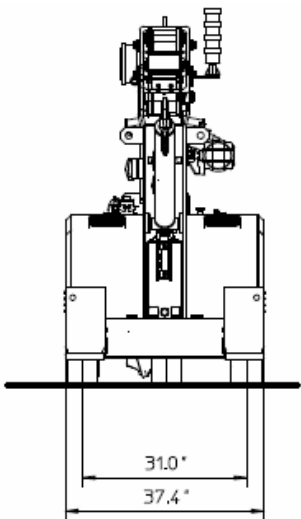
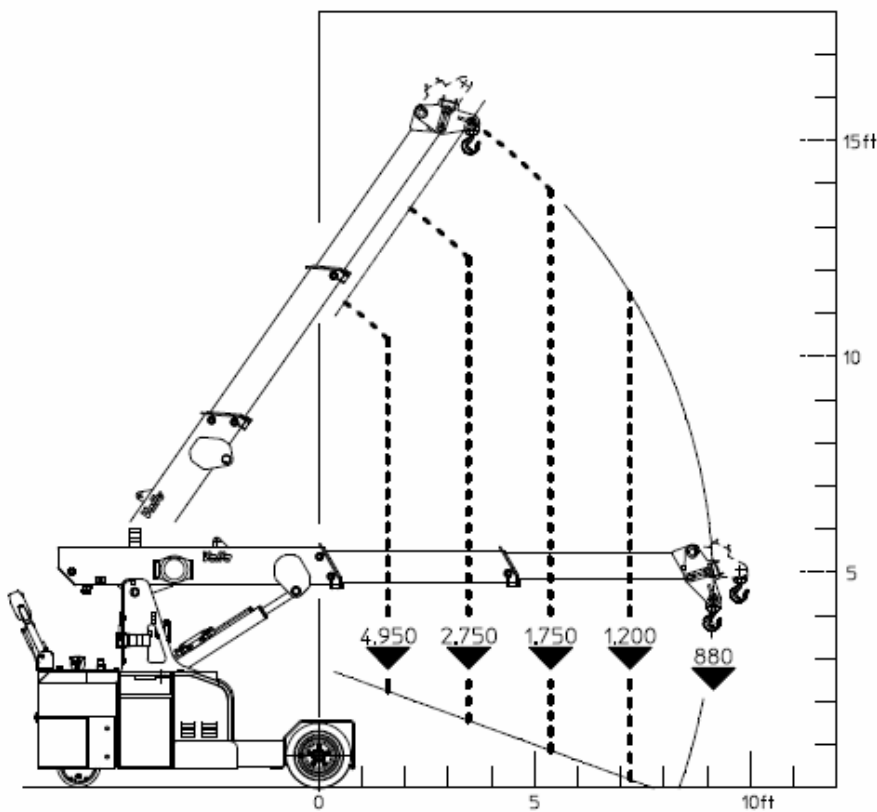
Options on request: hydraulic winch; special oversized hydraulic winch; chain hoists; carry-deck; battery charger (on board and stand-alone); manual and hydraulic jibs; radio remote control; low temperatures kit; non marking tires.



VALLA mobile crane mod. 25 EL
complies with the following standards:
-2006/42/CE
-UNIEN13000
-I.S.P.E.S.L.

VALLA
25EL CAPACITY DIAGRAM
(lb)

DIAGR. N° 25E-005 A



Lbs./ft



Valla a division of CVS Ferrari Srl
Via Piacenza, 45 - 29010 Calendasco (Piacenza) - ITALIA
Tel. +39 0523 762025 / 752004 - Fax +39 0523 760531
e-mail: info@valla.com - www.valla.com