



25 E

Electric battery operated Mobile Crane

Max. Capacity **Lbs. 5,500**



| Valla            |                    |
|------------------|--------------------|
| OUTREACH<br>(Ft) | CAPACITY<br>(Lbs.) |
| 3                | 3,800              |
| 4,5              | 2,600              |
| 8                | 1,100              |

### TECHNICAL DATA

**CRANE FRAME:** Three-wheelers frame fabricated from preformed and welded steel plate with built-in counterweight and, for maintenance purposes, removable counterweight .

**TRACTION:** by AC 3kw 48V reversible electric motor, controlled by inverter, electro magnetic control on disk brake.

**BATTERY:** 48V 200Ah battery, battery meter on dashboard.

**DRIVE:** by 180° steering rudder. Steering 700W 48V electric motor electronically controlled. Complete with safety device on backward.

**WHEELS:** Nr. 1 rear cushion 305x135 e Nr. 2 front 18x7-R8 superelastic.

**BOOM:** three elements boom (1 fixed and 2 hydraulically telescoping section) with sequential hydralic telescope by double internal cylinder fitted with nylon wear pads. Adjustable wear pads on the sides.

**BOOM CONTROL:** by electronic proportional joystick distributor. 4 kW 48V motor pump.

**LMI:** Electronic Load Moment Indicator. Display showing lifted load, max allowed load, tilting percentage, operating radius, angle, telescope and light indicators on the operative mode.

**TOTAL WEIGHT:** approx. Lbs. 5,000      **MAX. CAPACITY:** Lbs. 5,500

**Options on request:** hydraulic winch; special oversized hydraulic winch; chain hoists; carry-deck; battery charger (on board and stand-alone); manual and hydraulic jibs; radio remote control; low temperatures kit; man bucket and relevant certification as aerial platform, non marking tires.

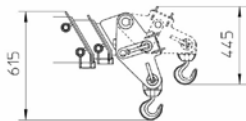
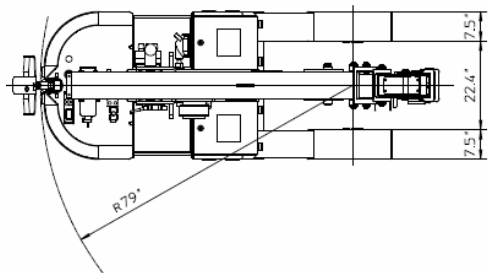
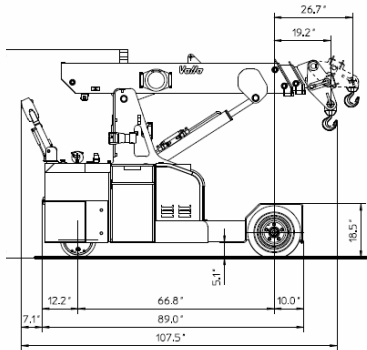
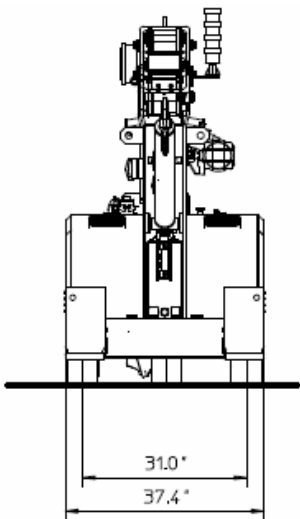
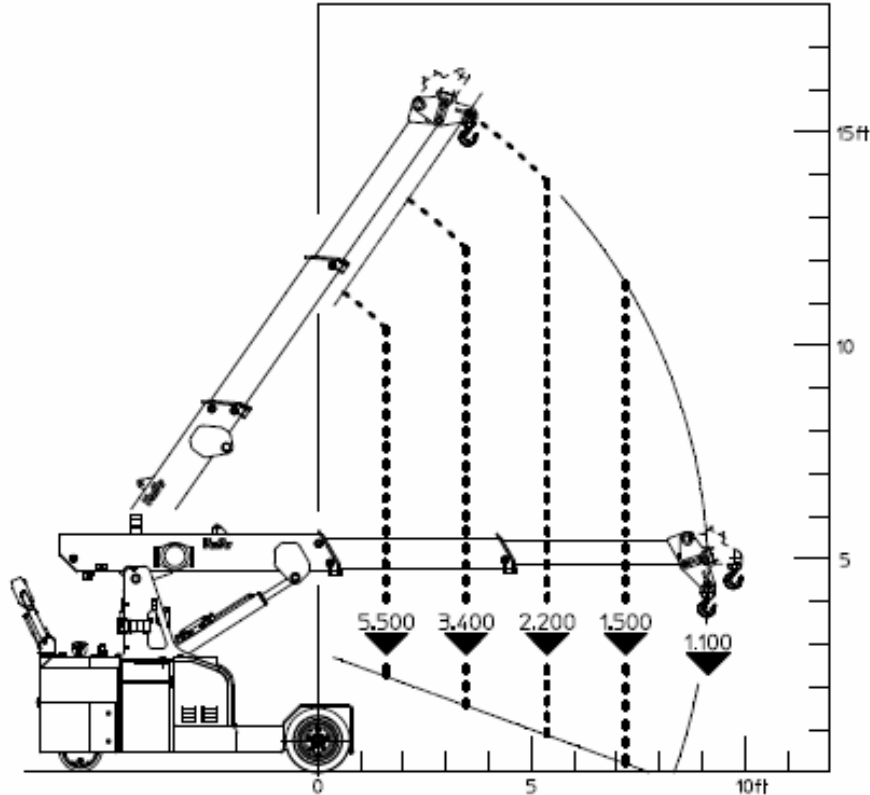




VALLA mobile crane mod. 25 E complies with the following standards:  
-2006/42/CE  
-UNIEN13000  
-I.S.P.E.S.L.

VALLA  
25E  
CAPACITY DIAGRAM  
(lb)

DIAGR. N° 25E-001 A



Lbs./ft



Valla a division of CVS Ferrari Srl  
Via Piacenza, 45 - 29010 Calendasco (Piacenza) - ITALIA  
Tel. +39 0523 762025 / 752004 - Fax +39 0523 760531  
e-mail: [info@valla.com](mailto:info@valla.com) - [www.valla.com](http://www.valla.com)

Data subject to be changed without any previous notice. Pictures may differ from technical description.