



TRACKED CRANE MODEL 20 TRX Max capacity 2 ton.



**ELECTRIC BATTERY
POWERED**

NEW

MOTOR: electrical 48 V CA - 12 kW.

TRANSMISSION: automatic, hydrostatic.
Max speed 2 km/h.

FRAME: moulded and welded steel plate.

TRACKED UNDERCARRIAGE: rubber crawlers.

BOOM: fabricated from preformed and welded steel plate with 2 hydraulic telescoping sections fitted with adjustable nylon wear pads and manual extension.

HYDRAULIC SYSTEM : consists of gear pump, proportional distributor with remot control, filter, safety valves on lifting movements, jib extension. Max. operating pressure 200 Bar.

TOTAL MACHINE WEIGHT: 2.100 Kg.

OPTIONAL EXTRAS: L.M.I. (Load Moment Indicator with angle, boom extension indicators and visible warning for max capacity), man bucket, radio remote control, hydraulic winch, chain hoist, diesel version, extra manual extension, battery, battery charger.

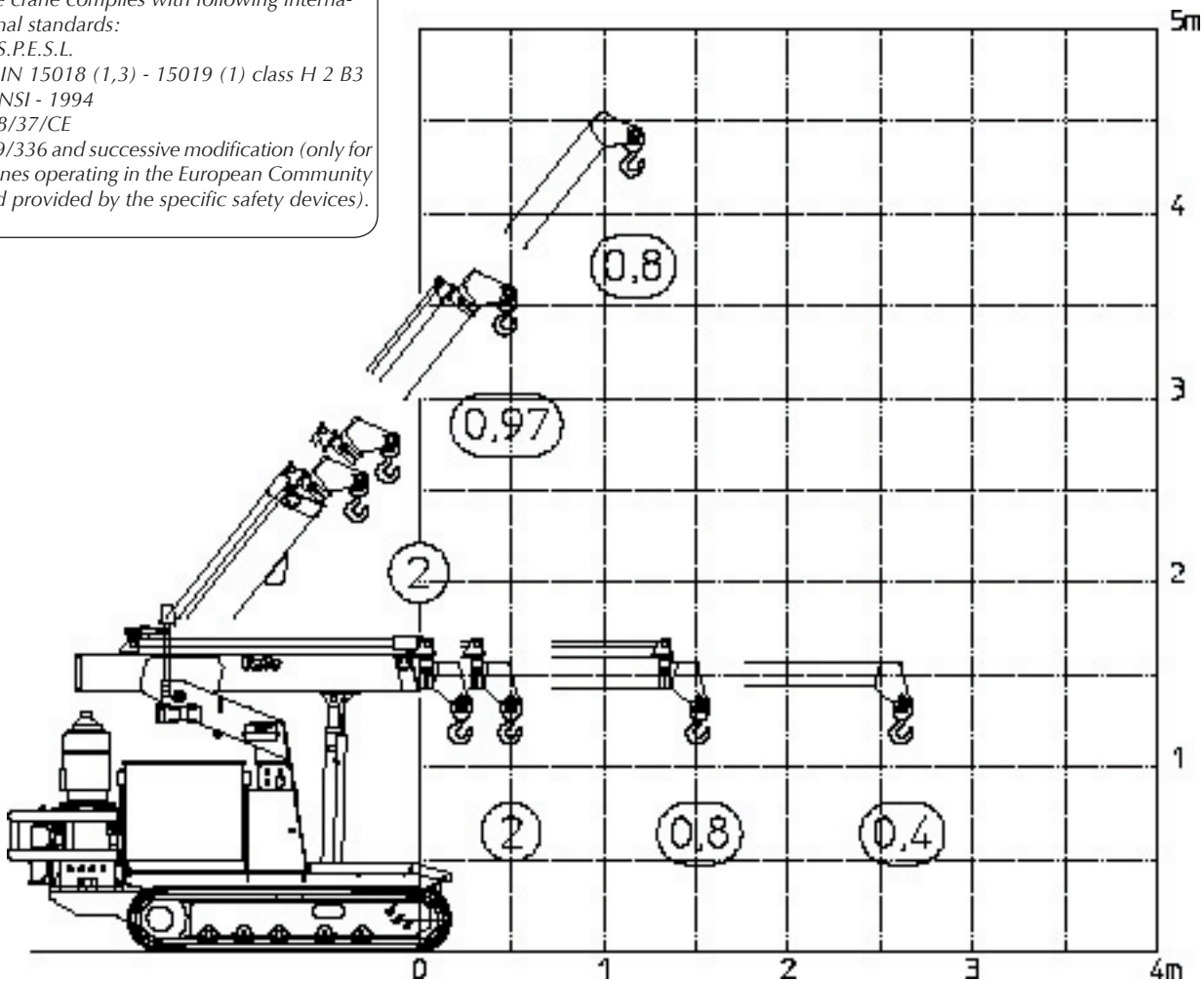
Valla S.p.A.

Via Piacenza, 45 - 29010 Calendasco - Piacenza - ITALIA
Tel. 0039 0523 762025 - 762004 - Fax 0039 0523 760531
Internet: www.valla.com - email: info@valla.com

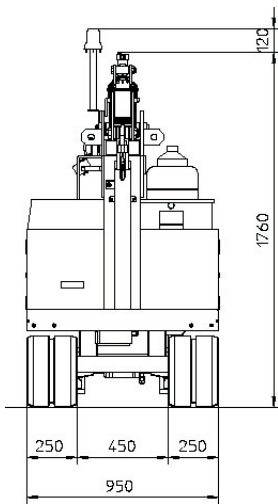
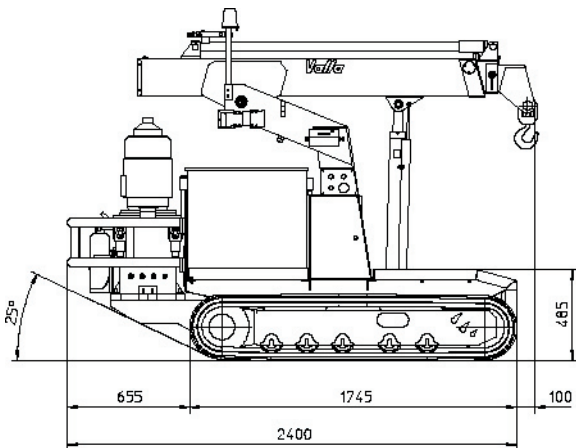


The crane complies with following international standards:

- I.S.P.E.S.L.
- DIN 15018 (1,3) - 15019 (1) class H 2 B3
- ANSI - 1994
- 98/37/CE
- 89/336 and successive modification (only for cranes operating in the European Community and provided by the specific safety devices).



VALLA model 20 TRX



mm

Valla S.p.A.

Via Piacenza, 45 - 29010 Calendasco - Piacenza - ITALIA
Tel. 0039 0523 762025 - 762004 - Fax 0039 0523 760531
Internet: www.valla.com - email: info@valla.com

