



Valla 120 D



Self Diesel operated Mobile Crane
Max. Capacity Lbs. 26,400



Valla

OUTREACH (Ft)	CAPACITY (Lbs.)
6	19,000
12	8,500
24	4,000

TECHNICAL DATA

CRANE FRAME: six-wheelers frame fabricated from preformed and welded steel plate with built-in counterweight.

ENGINE: diesel 4 cylinders water cooled with electric starter and automatic fuel switch off.

TRANSMISSION: automatic (hydrostatic) "automotive". Differential axle. Max speed 14 Km/h.

BRAKES: foot hydraulically operated drum brakes. Parking hand brake mechanically operated.

SUSPENSION: oscillating rear axle with mechanical lock.

STEERING: power steering with hydraulic cylinder and 135° articulation. Safety valves and filter.

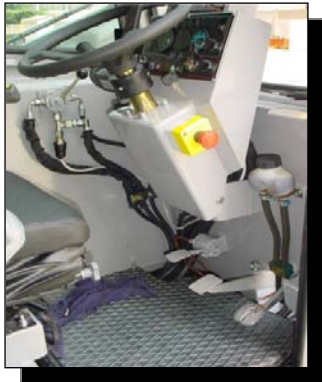
WHEELS: nr. 2 rear superelastic 250 R15- nr. 4 front superelastic 250 R15

BOOM: fabricated from preformed and welded quality steel plate. Nr.4 sections: 1 fixed; 3 hydraulically telescoping. Fitted with nylon wear pads adjustable wear pads on the sides.

LMI: electronic Load Moment Indicator. Display showing lifted load, max allowed load, lifting percentage, operating radius, angle, telescope and light indicators on the operative mode.

TOTAL WEIGHT: approx. Lbs. 30,000 **MAX. CAPACITY:** Lbs. 26,400

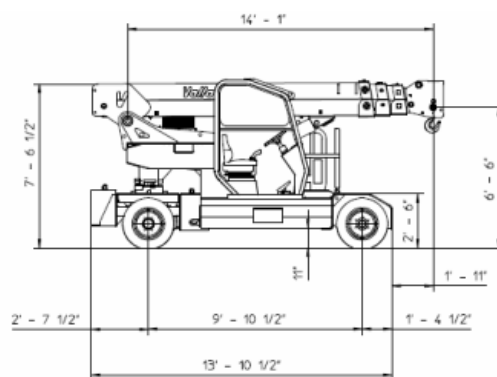
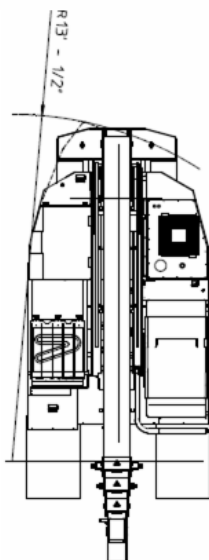
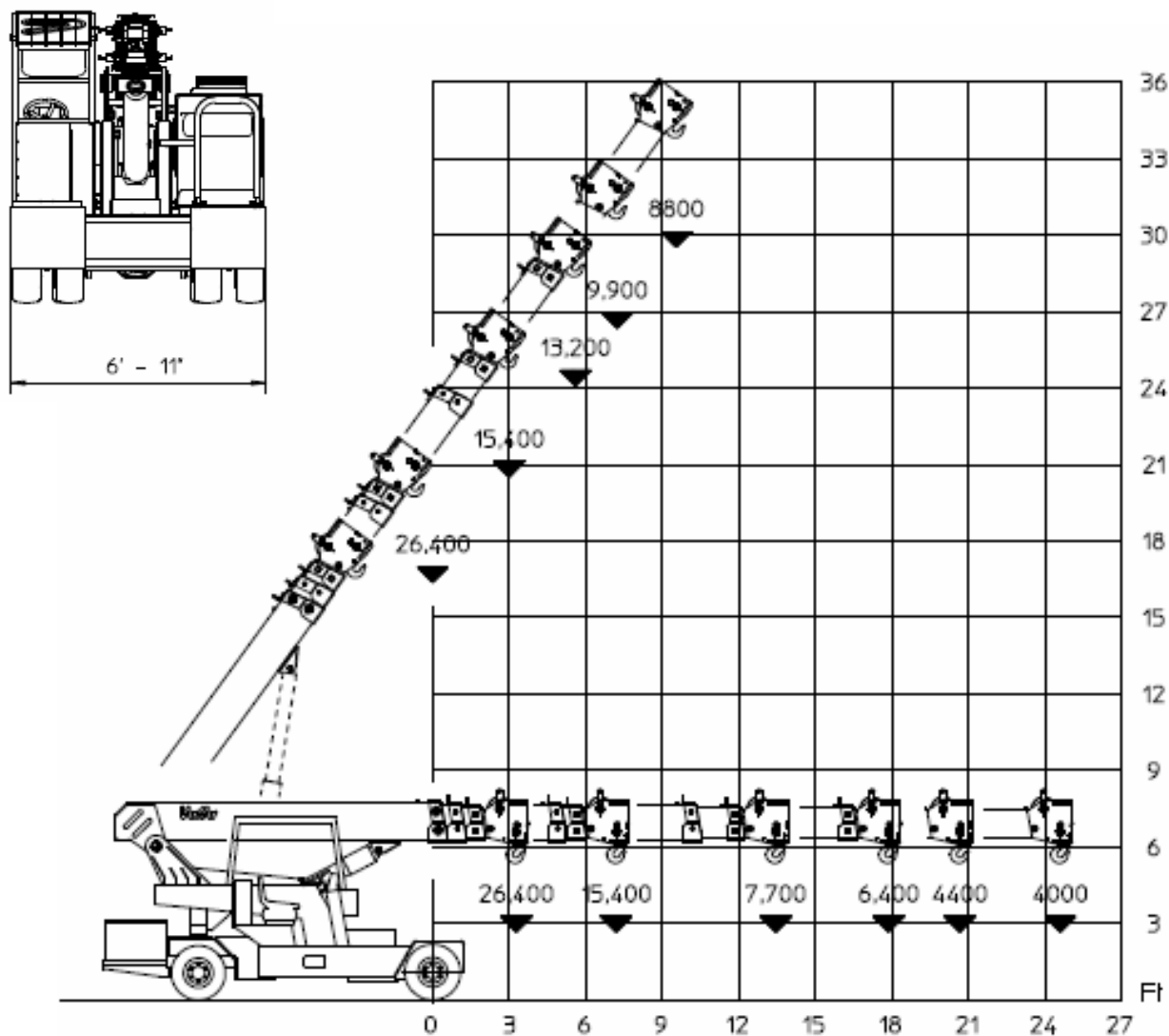
Options on request: hydraulic winch; chain hoists; carry-deck; manual and hydraulic jibs; man bucket; remote control; full set of road lights; man bucket and relevant certification as aerial platform; non marking tires.



Data subject to be changed without any previous notice. Picture may differ from final product



VALLA mobile crane mod. 120D
complies with the following standards:
-2006/42/CE
-UNIEN13000
-I.S.P.E.S.L.



Lbs./ft



Valla a division of CVS Ferrari Srl
Via Piacenza, 45 - 29010 Calendasco (Piacenza) - ITALIA
Tel. +39 0523 762025 / 752004 - Fax +39 0523 760531
e-mail: info@valla.com - www.valla.com

Data above are subject to be changed without any previous notice. Pictures may differ from descriptive leaflet.