



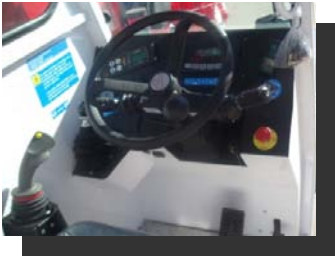


120 EVO

Electric battery operated Mobile Crane
Max. Capacity Lbs. **26,400**



Valla	
OUTREACH (Ft)	CAPACITY (Lbs.)
4,5	26,400
13	9,700
31	2,200



TECHNICAL DATA

CRANE FRAME: made by preformed and welded steel plate with built-in counterweight.

DRIVING: two AC 12 kW-80V electric motors self vented, controlled by inverter, with energy recovery on braking.

TRANSMISSION: front drive, double motor rigid axle. Double hydrostatic reduction and planetary final reduction.
Travelling speed up to 12 Km/h.

BATTERY: traction battery 80V – 800 Ah. Autonomy 6 hours on 8 working hours. Battery indicator on dashboard.

BRAKES: foot operated brakes with hydraulic double circuit multi-disc control on front wheels and disc brakes on rear wheels. Hand brake manually operated.

SUSPENSION: oscillating rear axle with mechanical limiter.

STEERING: automotive type drive with hydraulic steering antishock valves. Hydraulic power steering independent from the crane and including kW2-80V motor driven pump, filter and protection valve.

WHEELS: rear : nr. 2 superelastic 250 – 15 – front: nr. 4 superelastic 250 – 15

BOOM: made by preformed and welded steel plate with 5 hydraulic synchronized deployment. Fitted with adjustable nylon wear pads.

BOOM CONTROL: in closed circuit powered by an AC 12 kW – 80V electro pump, with filter, boom raise, lower, extension and retraction movements. Maximum hydraulic pressure 240 Bar.

HYDRAULIC WINCH: included, max capacity Lbs. 26,400

LMI: electronic Load Moment Indicator. Display showing lifted load, max allowed load, tilting percentage, operating radius, angle, telescope and light indicators on the operative mode.

TOTAL WEIGHT: approx. Lbs. 31,700

MAX. CAPACITY: Lbs. 26,400

Options on request: remote control; mechanical or hydraulic jib; battery; battery charger; non-marking tires; cabin door; full set of road lights; man bucket and relevant certification as aerial platform; fork attachment

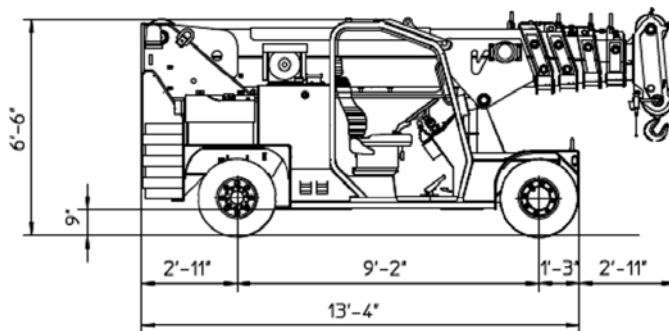
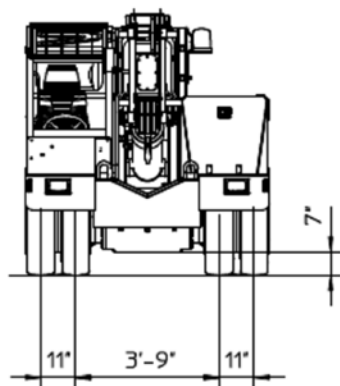
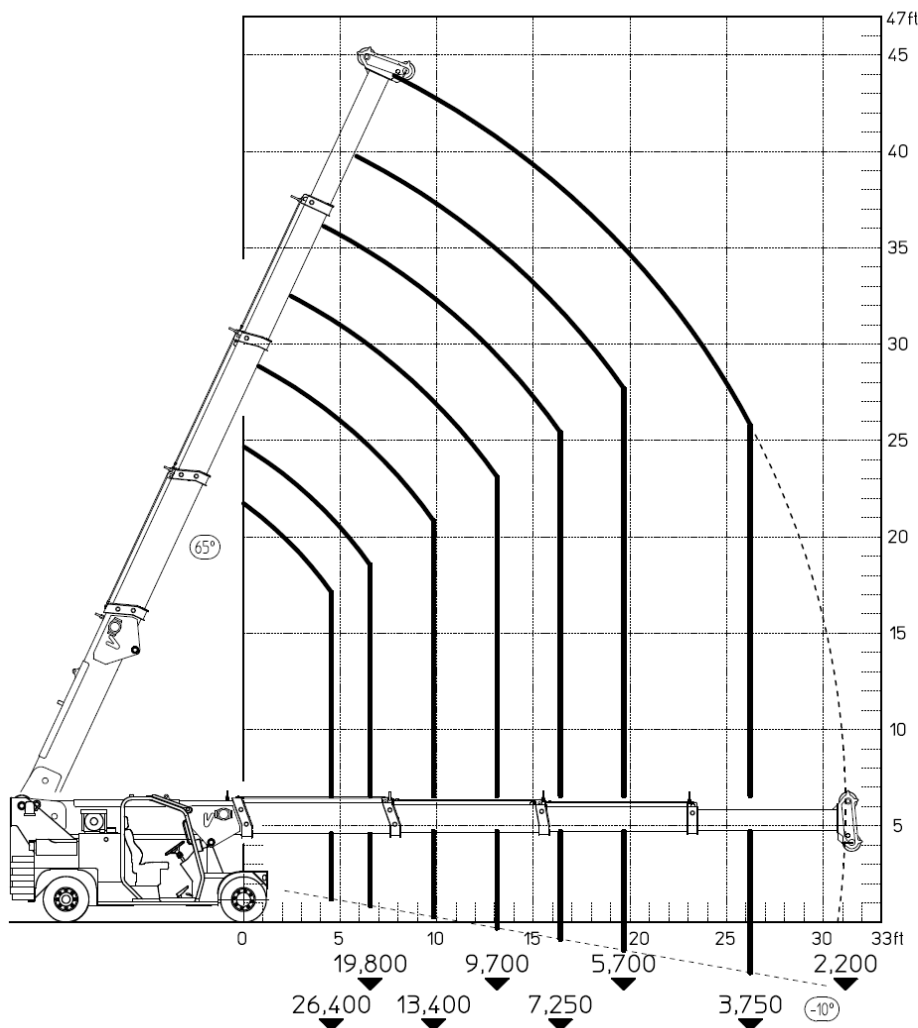
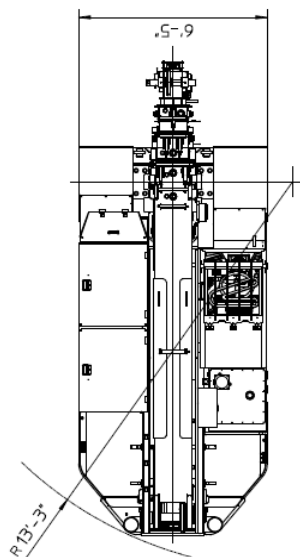
Data subject to be changed without any previous notice. Pictures may differ from technical description.



120 EVO



VALLA mobile crane mod. 120 EVO
complies with the following standards:
-2006/42/CE
-UNIEN13000
-I.S.P.E.S.L.



Lbs./ft



Valla a division of CVS Ferrari Srl
Via Piacenza, 45 - 29010 Calendasco (Piacenza) - ITALIA
Tel. +39 0523 762025 / 752004 - Fax +39 0523 760531
e-mail: info@valla.com - www.valla.com

Data subject to be changed without any previous notice. Pictures may differ from technical description.