



Arcade Version

LEO 12 T

Technical Data*

Aerial Work Platform **TEUPEN[®] hyLIFT[®]**



LEO 12 T

Working height:	approx. 12,00 m
Cage floor height:	approx. 10,00 m
Lateral outreach to either side:	approx. 8,45 m
Safe load on cage:	max. 120 kg
Size of working cage (LxWxH):	0,80 x 0,70 x 1,10 m
Overall length including jib:	min. 4,75 m
Overall length excluding jib:	min. 2,80 m
Minimum clearance width:	min. 1,76 m
Overall height:	min. 1,98 m
Weight excluding jib system:	approx. 2985 kg
Total weight of the jib system:	approx. 65 kg
Standard surface on crawlers (LxW):	min. 1,74 m x 1,68 m
Max. loading on each crawler:	approx. 21,4 kN
Surface load in standard work position:	approx. 4,15 kN/m ²
Swivel angle (lower swivel arm 100° + boom 120°):	220°
Movable up to working height:	approx. 10,10 m
Permissible positioning for working in tilt angle:	approx. 2°
Drive with boom up (1. Section telescoped in) possible up to ground slopes:	approx. 2°
Climbability with boom in transport position (in direction of traffic):	approx. 15 %
(crosswise to direction of traffic):	approx. 15 %
Speed:	max. 1,2 km/h
Speed with raised boom:	max. 0,7 km/h
Power track:	installed outside
Telecoping cylinder:	under the telescoping boom
Max. shearing force under crawler with protective covers:	approx. 4400 N
Battery drive:	24 V / 300 Ah
Charging set:	230 V / 16 A

Ancillary equipment

Electricmotor EBS 90 L X 4

Nominal input voltage:	230 V / 50 Hz
Drawing of current:	12,9 A
Output:	2,2 kW

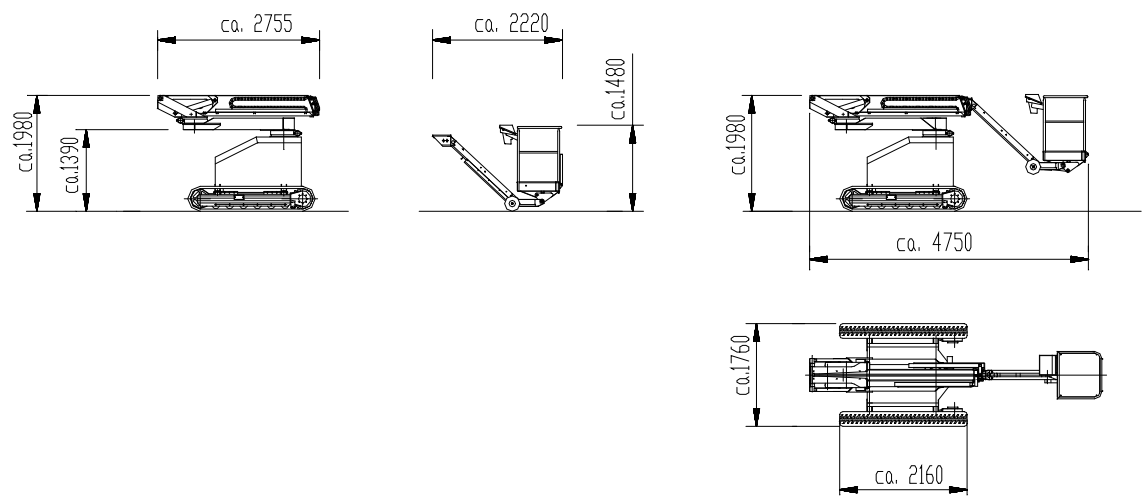
Driving-engine Honda GX 390

Motor Honda GX 390, air-cooled, 1 cyl., 4 - stroke (sound-suppressed)	
Performance (max.):	9,6 kW (13 PS) at 3600 min ⁻¹
Fuel:	Lead-free petrol
Fuel economy/h:	approx. 3,9 L
Noise level:	approx. 82 dB (A)

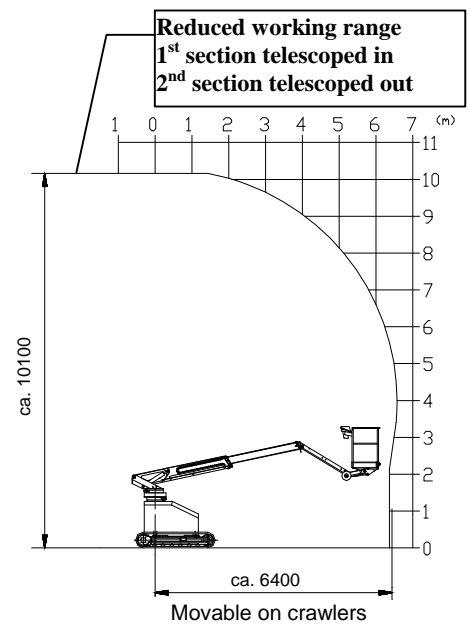
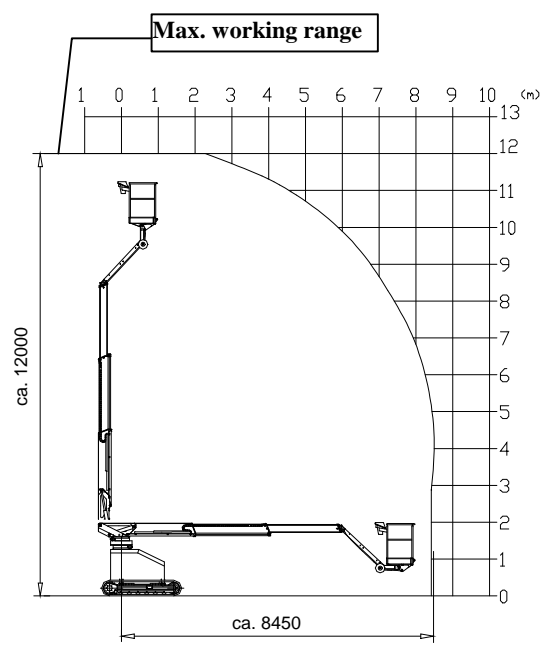
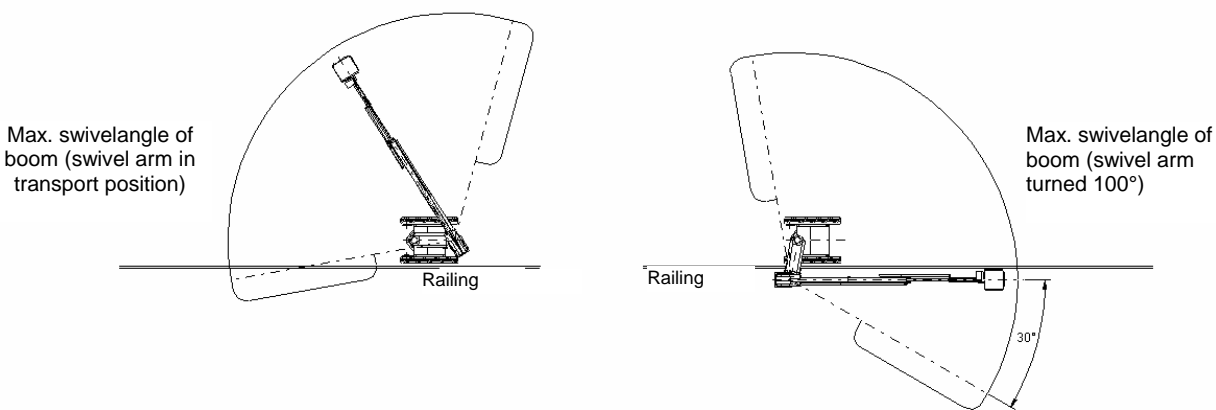
**Technical data with standard equipment!

Alterations in construction reserved!

As at 16.03.09



Standard swivel angle [220°
(8,45 m outreach)



Alteration in construction reserved!

TEUPEN Maschinenbaugesellschaft mbH

Address: Marie-Curie-Strasse 13 - 48599 Gronau-GERMANY - Phone ++49 / 2562 / 8161-0 - Fax ++49 / 2562 / 8161-888
P. O. Box: 1951 - 48580 Gronau-GERMANY Internet: <http://www.teupen.info> - E-mail: mail@teupen.info