



Terex Cranes

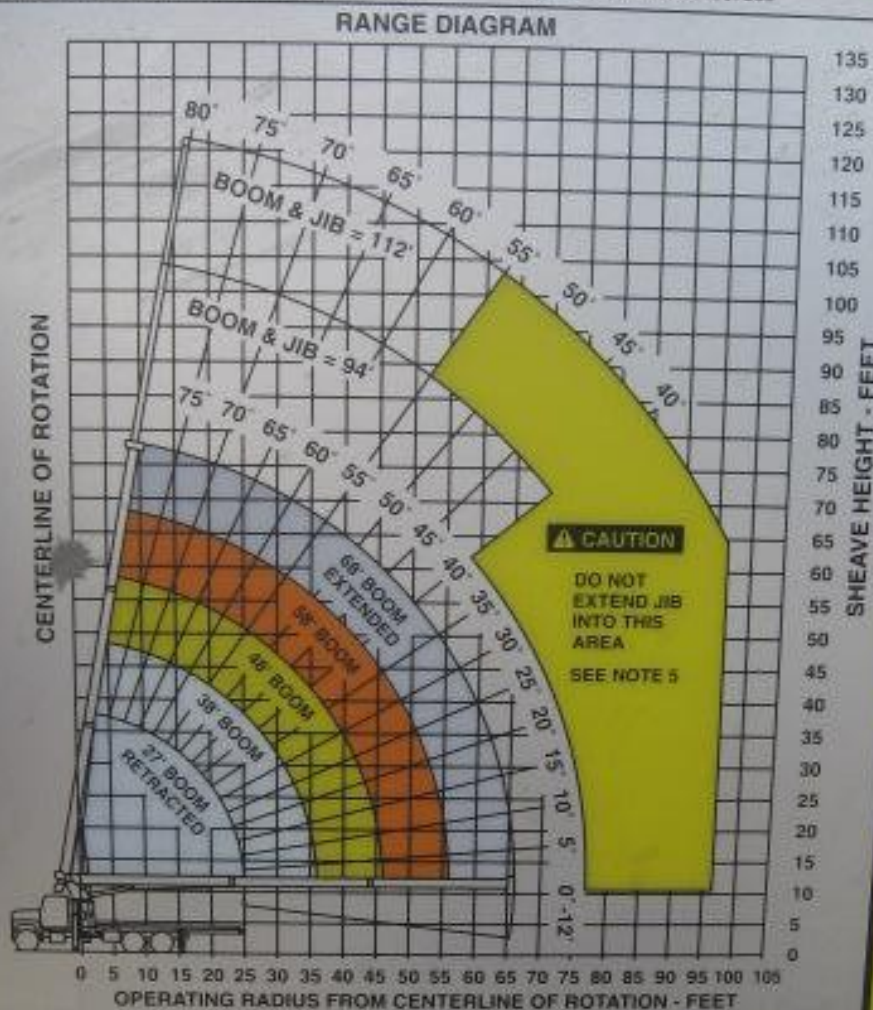
OLATHE, KANSAS 66061

U.S. PATENT NOS. 4211332, 4459785, 5012939

MODEL TC-3468N

MAXIMUM LOAD CHART

CANADA PAT. NO. 1097265



1 PART LINE	2 PART LINE	3 PART LINE	4 PART LINE
LOADS UP TO 8,405 LBS. STD. CABLE	LOADS UP TO 19,332 LBS. STD. CABLE	LOADS UP TO 28,600 LBS. STD. CABLE	LOADS UP TO 30,498 LBS. STD. CABLE
6,729 LBS. ROT. RESIST. CABLE	13,440 LBS. ROT. RESIST. CABLE	20,160 LBS. ROT. RESIST. CABLE	26,880 LBS. ROT. RESIST. CABLE

THIS MACHINE COMPLIES WITH OSHA REGULATIONS 1910.185
AND 1918.506 WHERE APPLICABLE AT DATE OF MANUFACTURE

CAUTION

ANTI-TWO-BLOCK SYSTEM
MUST BE IN GOOD
OPERATING CONDITION
BEFORE OPERATING CRANE.
REFER TO OWNER'S MANUAL.

KEEP AT LEAST 3 WRAPS
OF LOADLINE ON DRUM AT
ALL TIMES.

USE ONLY 5/8" DIAMETER
CABLE WITH 32,000 LB
BREAKING STRENGTH
ON THIS MACHINE

1. THE OPERATOR MUST BE TRAINED AND CERTIFIED.
 2. POSITIONING OF LOADS MUST BE DONE IN ACCORDANCE WITH THE OPERATOR'S MANUAL.
 3. LOADED BOOMS MUST BE EXTENDED TO THE FULL EXTENT OF THE BOOM.
 4. USE RATING OF BOOM FOR EXTENDED BOOM.
 5. BOOM MUST BE RETRACTED TO THE FULL EXTENT OF THE BOOM.
 6. USE RATING OF BOOM FOR EXTENDED BOOM.
 7. LIFTING OFF OR APPROXIMATE CRANE LOAD LEVELS ARE INDICATED BY THE CRANE'S STABILITY SYSTEM.
 8. MUST ALL BE IN THE HANDS OF THE OPERATOR.
 9. THE LOAD LINE MUST BE KEPT AT LEAST 3 WRAPS ON THE DRUM AT ALL TIMES.
- DEFINITIONS**
1. OPERATING RADIUS: THE HORIZONTAL DISTANCE FROM THE CENTERLINE OF ROTATION TO THE LOAD.
 2. LOADED BOOM: THE BOOM WITH A LOAD ATTACHED.