



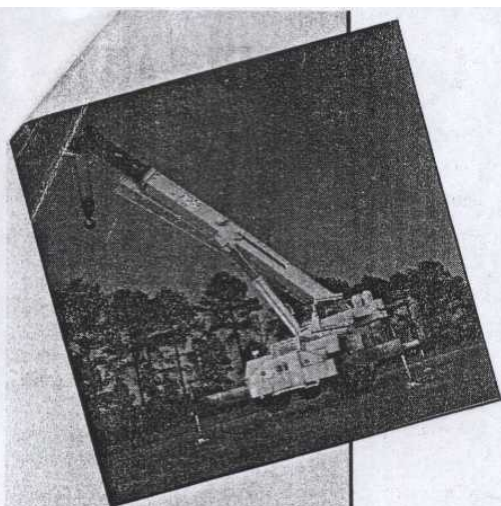
SPECIFICATIONS

RT 160

60 Ton (54 tonne) Capacity
Rough Terrain Crane



TEREX CRANES, INC.



T 160 FEATURES

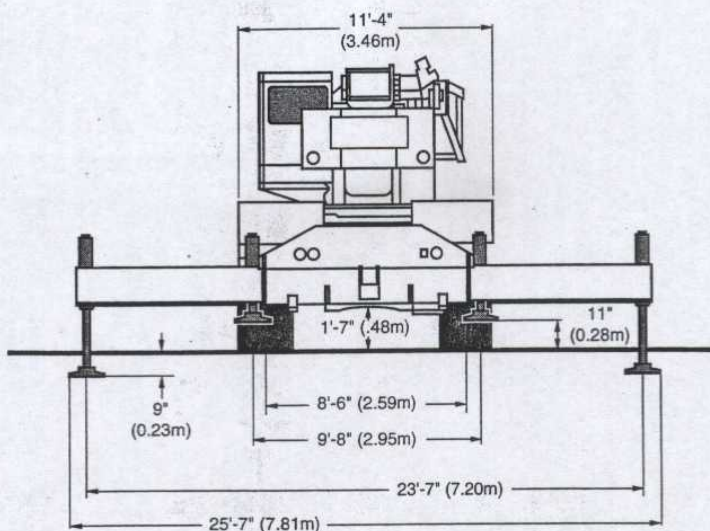
115 ft. (35 m) Boom:
Welded inside and out.

Lattice Extensions:
Swingaway with or without a telescoping stinger for a maximum tip height of 186 ft. (56.7 m).

Matched P&H Winches:
Bent axis motors give you smooth operation and a maximum line pull of 17,100 lbs. (7757 kg).

Three Steering Modes:
Front-wheel, 4-wheel coordinated crab or crab, all controlled by the steering wheel.

Pride Plus Warranty:
The most comprehensive warranty in the business. Covers the entire crane for 12 months or 2,000 hours of operation. Plus, major weldment structures are covered for 5 years or 10,000 hours.



This crane meets the requirements of ANSI B30.5. The machine structure has been tested per SAE J1063. The machine stability has been tested per SAE J765.

BOOM

34 ft. to 115 ft. (10.4 m to 35 m) four-section telescopic boom. Boom point has five non-metallic main sheaves and two non-metallic idler sheaves. Metallic sheaves are available. A mechanical boom angle indicator is provided.

Boom Telescope:

4 section full power synchronius boom with single double-acting cylinder and chain crown and retract.

Boom Hoist:

Two-double-acting cylinders provide elevation from -2 degrees to 78 degrees.

BOOM OPTIONS

Lattice Extension:

Swingaway, 38 ft (11.6 m), self-storing on base section of main boom.

Telescopic Lattice Extension:

Swingaway 38 ft. to 60 ft. (11.6 m to 18.3 m), self-storing on the base section of main boom.

Offset Mechanism:

Pivoting links which allow lattice extensions to offset 17 or 30 degrees from the main boom.

Auxiliary Boom Point:

Mounted at boom point with single sheave.

COUNTERWEIGHT

15,200 lbs. (6,895 kg) bolt on type.

CAB

All-weather environmental cab of steel has locking door and opening ceiling, side, and rear windows with tinted safety glass throughout. Operator's cloth-covered seat is fully adjustable and has shock-absorbing suspension and seat belt. Steering column tilts and telescopes for comfort. Cab is cushion-mounted for vibration dampening and noise reduction. Contains all roading and crane function controls including armrest-mounted joystick or twin lever controls for swing, auxiliary winch, main winch, and boom hoist. Foot pedals for swing brake, boom telescope, service brakes and engine throttle.

Front console includes gauges for engine water temperature, engine oil pressure, hydraulic oil temperature, transmission oil temperature, air pressure and fuel. Also includes hourmeter, speedometer, tachometer, voltmeter, winch high speed indicator, rear steer centering light, engine condition warning system, anti-two block system and electronic LMI. Additional cab equipment includes windshield wiper and washer, defroster fan, interior cab light, fire extinguisher, machine level gauge, electric horn and hand throttle.



5x25-28PR tubeless with
rock tread (E-3).
Spare tires with rims.
Tire inflation kit.

ENGINE

Cummins 6CT8.3, 4-cycle, turbo-
charged diesel with a displacement
of 505 cu. in. (8.3 liters). Output is
215 HP (160 kw) @ 2,500 rpm with
maximum torque of 558 ft. lbs. (756
Nm) @ 1,500 rpm.

Electrical:

24 volt system with negative ground,
two 8D batteries, and a 70 amp
alternator.

Fuel Tank:

80 gallon (303 liter) capacity.

TRANSMISSION

Fully sequential powershift with torque
converter, six speeds forward, three
reverse.

Max Speed:

25 mph (40 km/h).

Max Grade:

90% @ stall.

**Miscellaneous Equipment
(Standard):**

Sliding engine hood, front and rear tow
lugs, automatic moisture ejector, air
dryer, headlights, taillights, turn signals
and flashers, back-up alarm, rearview
mirrors, and storage compartments.

**Miscellaneous Equipment
(Optional):**

Engine starting aid, pintle hooks, flood-
lights, amber beacon, roof wiper,
hydraulic air conditioner, and choice of
propane, diesel, or hydraulic (c/w AC)
heater.

PCSA Rating Class 10-280

Capacity charts and related lifting data
can be found in a separate publication.

RT 160 WEIGHT DISTRIBUTION	POUNDS			KILOGRAMS		
	GROSS	FRONT	REAR	GROSS	FRONT	REAR
Basic Machine	90,463	43,912	46,551	41,034	19,918	21,116
Additions for Options						
Lattice Extension	1,735	2,294	-559	787	1041	-254
Telescopic Lattice Extension	2,661	3,795	-1134	1207	1721	-514
Auxiliary Boom Point	154	460	-306	70	209	-139
Auxiliary Winch Wire Rope	487	-249	736	221	-113	334
60 Ton Hook Block (travel)	1,122	2,323	-1201	509	1054	-545
10 Ton Headache Ball (boom)	467	764	-296	212	346	-134

NOTE: All designs, specifications, and components of the equipment described are subject to change at the manufacturer's sole discretion at any time and without advance notice. Capacity charts and information printed here are only a guide and may not be complete. They should not be relied upon to operate the crane. The individual load charts and related lifting data on each crane must be understood and govern operation of the crane. Data published herein is informational in nature and shall not be construed to warrant suitability of the machine for any particular purpose as performance may vary with conditions encountered. The only warranty applicable is our standard warranty for this machine.

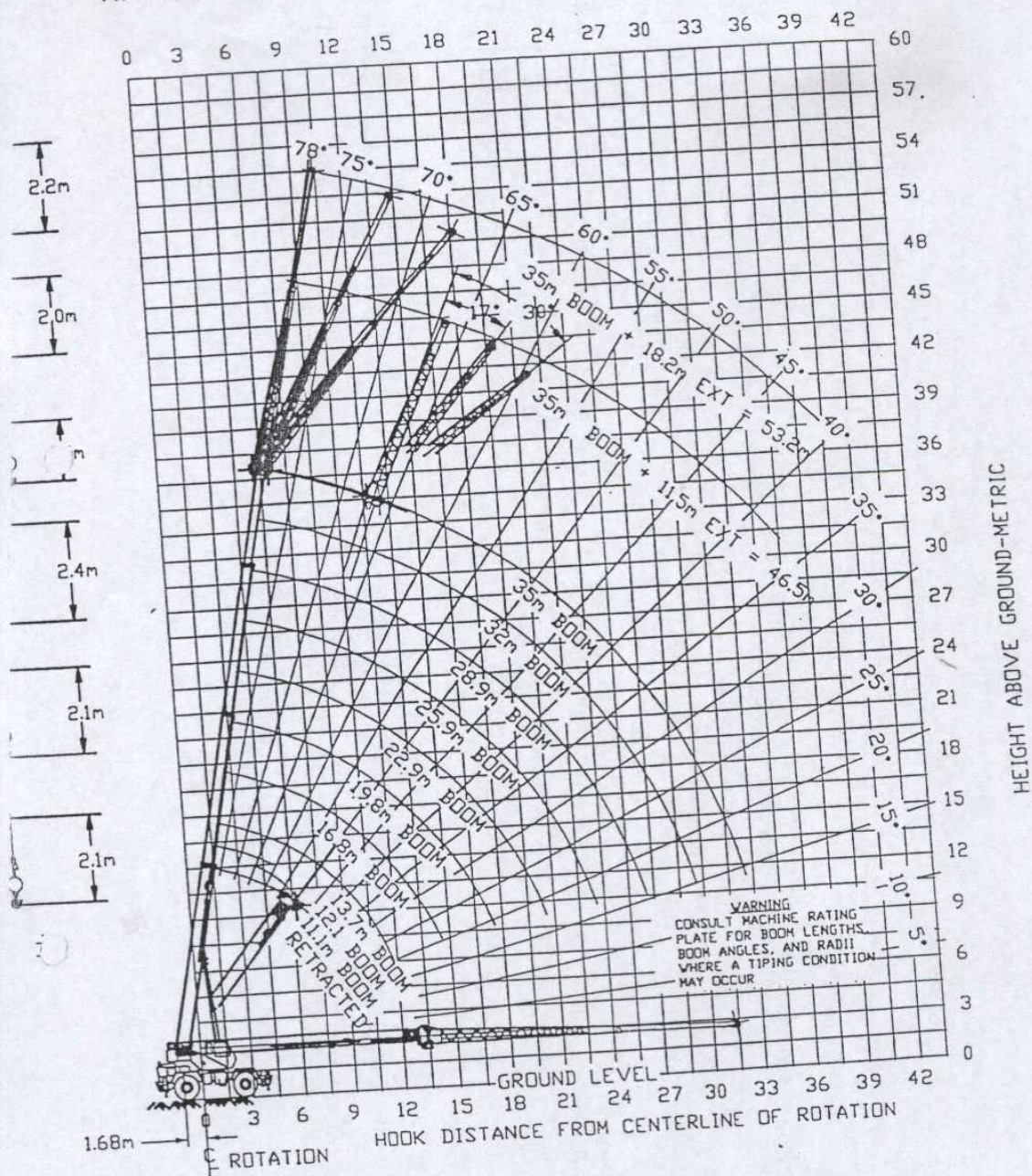


P.O. Box 260002 Hwy. 501 East/Atlantic Center Conway, SC 29526-2602 U.S.A.
(803) 349-6900 FAX (803) 349-7090





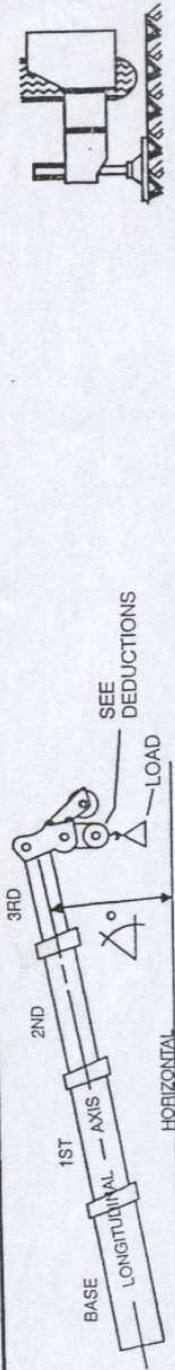
RANGE DIAGRAM RT160 35M FULL POWER BOOM



3232Z147_B



11.1 - 35.1 METER BOOM ON FULLY EXTENDED OUTRIGGERS
6895 Kg TOTAL COUNT WEIGHT

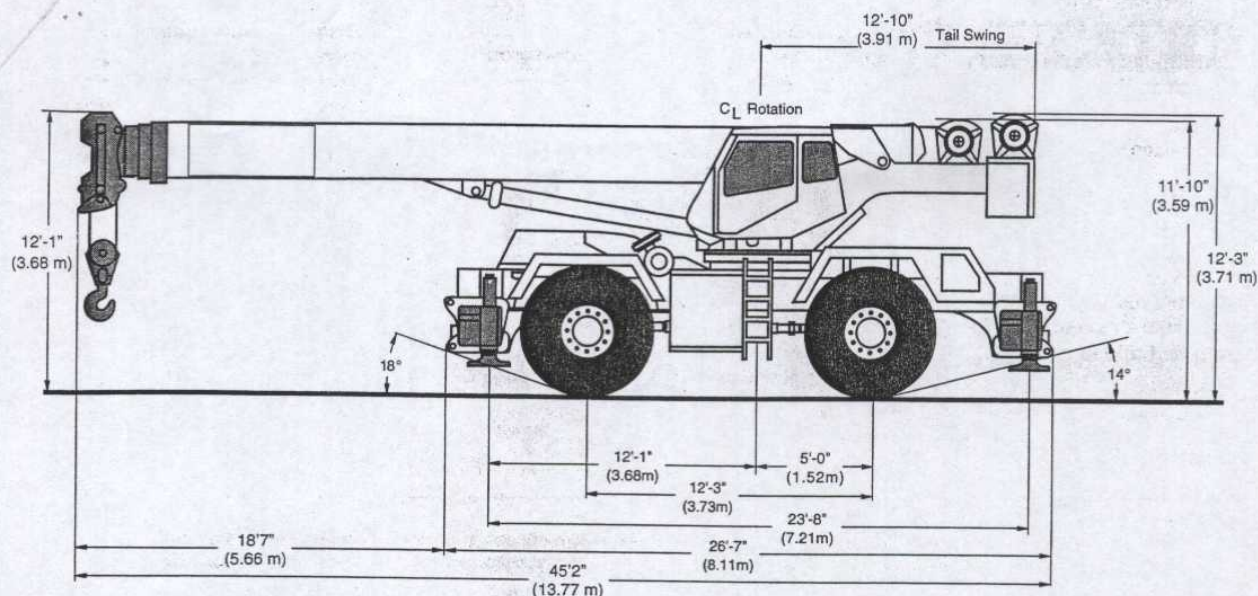


POWERED BOOM LENGTH IN METERS																					
LOAD RADIUS M.	11.1 M		12.2 M		13.7 M		16.8 M		19.8 M		22.9 M		25.9 M		29.0 M		32.0 M		35.1 M		LOAD RADIUS M.
	LOADED BOOM ANGLE X°	LOAD, Kg	LOADED BOOM ANGLE X°	LOAD, Kg	LOADED BOOM ANGLE X°	LOAD, Kg	LOADED BOOM ANGLE X°	LOAD, Kg	LOADED BOOM ANGLE X°	LOADED BOOM ANGLE X°	LOAD, Kg	LOADED BOOM ANGLE X°	LOAD, Kg	LOADED BOOM ANGLE X°	LOADED BOOM ANGLE X°	LOAD, Kg	LOADED BOOM ANGLE X°	LOADED BOOM ANGLE X°	LOAD, Kg		
3	68	54400	70	46250	72	39900	75	34700												3	
3.5	65	47700	68	43900	70	39850	74	34600												3.5	
4	62	43300	65	41500	68	38900	73	34500	75	27300										4	
5	56	37400	60	36600	63	35500	69	33050	73	26500	75	21300								5	
6	49	31600	54	31350	59	31350	65	29750	69	25900	72	20350								6	
7	41	26800	47	26800	53	27400	62	26550	66	23500	70	19200	73	18150	75	16800				7	
8			40	22850	48	23500	57	23200	63	21050	67	17850	71	16300	73	15200	75	13650		8	
9			31	19700	41	19800	53	19550	60	18750	65	16200	69	14750	71	13750	73	12700	75	10350	9
10					33	17100	48	16850	56	16450	62	14900	66	13500	69	12550	71	11750	73	9650	10
12							37	12650	49	12900	56	12650	61	11400	65	10500	68	9950	70	8300	12
14							40	9900	49	9900	49	9700	55	9350	60	8750	64	8300	67	7200	14
16							28	6400	41	6400	49	6400	49	6400	55	6400	60	6400	63	6300	16
18											33	5750	43	5750	50	5750	55	5750	59	5650	18
20													35	4800	45	4900	51	4900	55	5000	20
22													26	3850	38	3960	45	4000	51	4050	22
24															30	3200	39	3250	46	3300	24
26																	33	2650	41	2650	26
28																	24	2100	35	2150	28
30																			28	1700	30

ZERO DEGREE BOOM ANGLE LOADS (Kg) / RADII (M..)											
0	9500 (9.4)	8100 (10.5)	6300 (12.0)	5000 (15.1)	3550 (18.1)	2300 (21.2)	1500 (24.2)	950 (27.3)	650 (30.3)	450 (33.4)	

MINIMUM BOOM ANGLE (DEGREES) FOR INDICATED BOOM LENGTH (NO LOAD) -2
MAXIMUM BOOM LENGTH (METER) AT -2 DEGREE BOOM ANGLE (NO LOAD) 35.1

3232Z153_A



Minimum turning radius is 19 ft. 5 in. (6.2 m).

WINCH

1580:

Two-speed with bent axis piston motor, planetary gearing with equal speed power raising and lowering, and infinitely variable speed control. Has automatic multi-disc brake and drum turn indicator.

Drum Capacity:

554 ft. (168 m) of 3/4 in. (19 mm) wire rope.

Wire Rope:

550 ft. (167 m) of 3/4 in. (19 mm) diameter, 6x37 EIPS with 7x7 IWRC.

Strength Limit:

16,800 lbs. (7620 kg) with 3.5:1 safety factor.

Line Pull (Max.):

17,100 lbs. (7757 kg) first layer, low speed.

Line Pull (Permissible):

11,000 lbs. (4990 kg) per part of line.

Line Speed (Max.):

631 fpm (192 mpm) fifth layer, high speed.

HOISTING OPTIONS

Auxiliary Winch:

Same as main winch. Wire rope is optional.

Auxiliary Winch Wire Rope:

460 ft. (140 m) of 3/4 in. (19 mm) diameter, 6x37 EIPS with 7x7 IWRC or rotation-resistant 8x19 EIPS with 7x7 IWRC.

Cable Spooling Device:

For main or auxiliary winches.

Hook Blocks:

60 ton (54 tonne) with five sheaves, or 20 ton (18 tonne) with one sheave.

QUICK REEVING DESIGN

Headache Ball:

8.5 ton (7.7 tonne) weighted hook.

SWING UNIT

360 degree continuous rotation to 2 rpm with disc brake, integral with swing reducer.

House Lock:

Manually engaged 360 degree house lock.

HYDRAULIC SYSTEM

System uses two tandem gear-type pumps with a total flow of 139 gpm (525 lpm). Filtration is by two 10-micron return line filters externally mounted to the reservoir and one 20-micron pressure line filter. An oil cooler and manual disconnect are standard.

Oil Reservoir:

162 gallon (615 liter) capacity.

CARRIER

3 Position Outriggers:

Independent, out and down type with control from the cab. Extension is 23 ft. 7 in. (7.2 m), 16 ft. 4 in. (4.98 m), and 9 ft. 7 in. (2.9 m). Front to rear spread is 23 ft. 8 in. (7.2 m).

Outrigger Floats:

24 in. (610 mm) in square with storage on carrier.

Front Axle:

Planetary drive/steer, rigid mounted. Drive disconnect for two-wheel drive operation.

Rear Axle:

Planetary drive/steer, mounted on oscillating cradle with hydraulic lockout cylinders. Oscillation is ± 5.2 in. (132 mm). Oscillation lockout override control.

Service Brakes:

Dual circuit, air over hydraulic caliper disc brakes at each wheel.

Parking Brakes:

Disc brake on the transmission output shaft.

Steering:

Hydrostatic power steering, front and rear axles. Control modes for front only, four-wheel crab and crab steering, all controlled by the steering wheel. Switch for independent rear steer. Minimum turning radius is 19 ft. 5 in. (6.2 m).

(continued on back)