



BOOM TRUCK CRANE RS 70100

DATASHEET - IMPERIAL

RS 70100



Features

- ▶ 35 t @ 5 ft capacity at rated distance from center of rotation
- ▶ 100 ft maximum boom length
- ▶ 110 ft maximum tip height
- ▶ 30.5/ 55 ft optional jib
- ▶ 163 ft maximum sheave height with 55 ft jib
- ▶ Electronic load moment indicator
- ▶ Quick reeving boom head

WORKS FOR YOU.™

CONTENTS

RS 70100

Page:

Key

.....	3
-------	---

Dimensions

Crane Dimensions	4, 5
Area of Operations	5
Mounting Specification	5
Range Diagram	6

Load charts

Boom Load Chart	7, 8, 9
Jib, Retracted	7, 8
Jib, Extended	7, 8

Technical description

Boom, Jib and Rotation	10
Operator Controls and Operator Aid	10, 11
Understructure	11
Optional Features	11



KEY

RS 70100

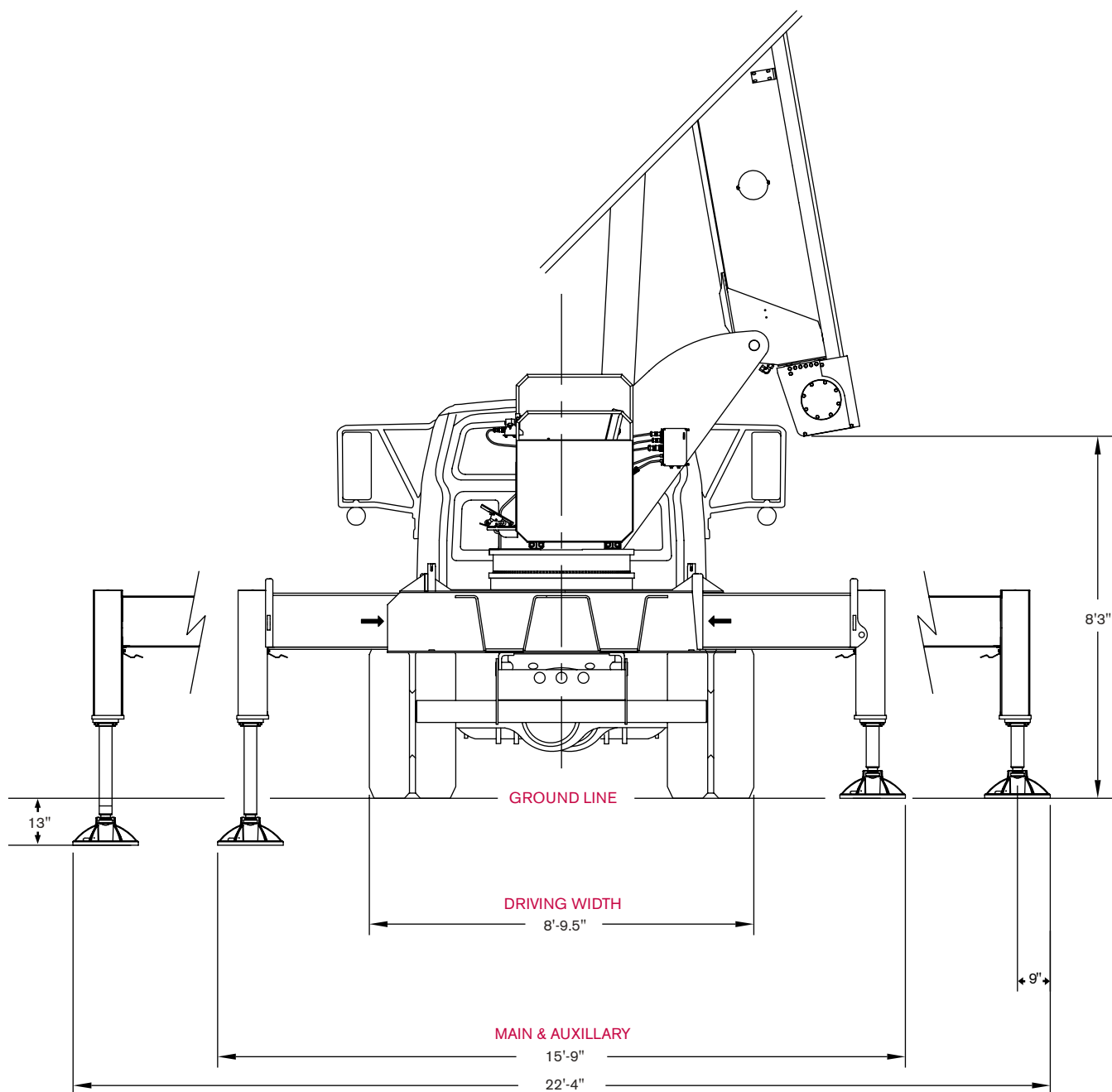
	Main boom		Main Hoist
	Boom length		Hoist line speed
	Tip height		Part line
	Telescoping mode		Operator aid
	Boom angle		Controls
	Working radius		Hydraulics
	Boom with jib		Working temperature
	Boom head		Outriggers
	Hook block		Working speeds
	Hook to head sheave pin---		Rope – Standard / Optional
	Rotation / Allowable rotation range		Rope diameter
	Boom angle		Rope length
	Boom over the front/rear		Line pull



DIMENSIONS

Crane Dimensions

RS 70100



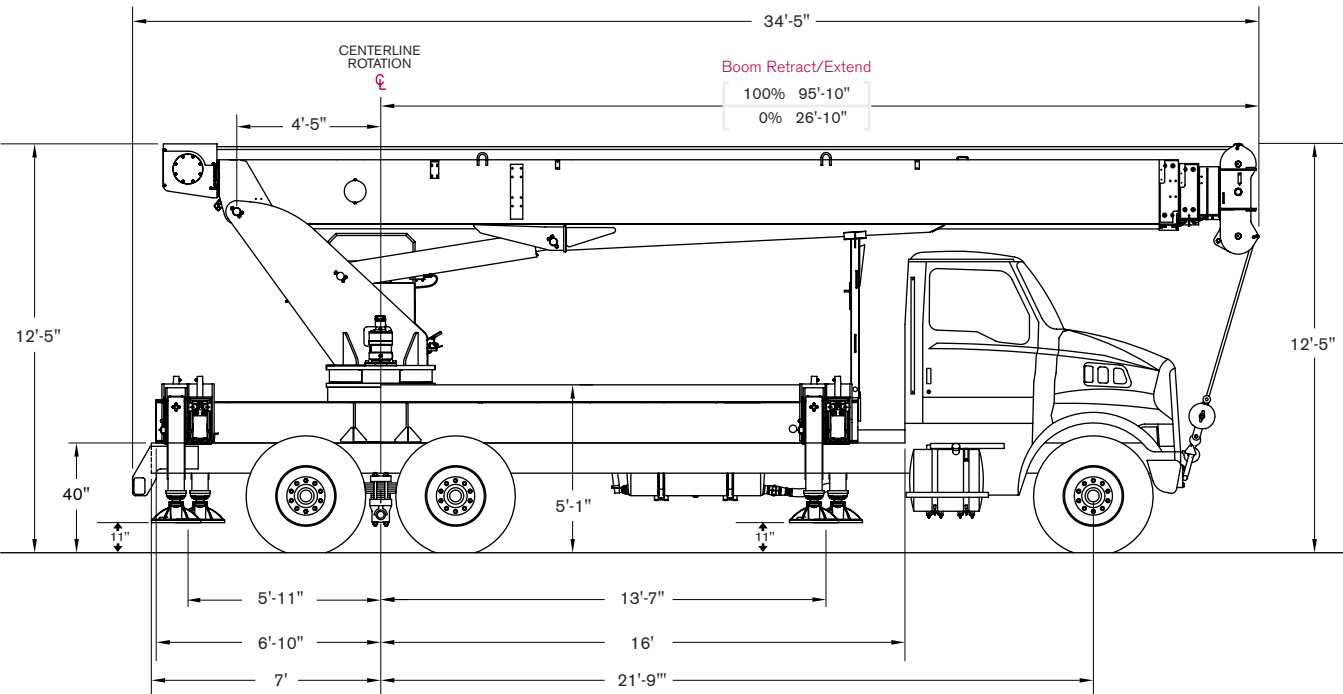
TEREX®



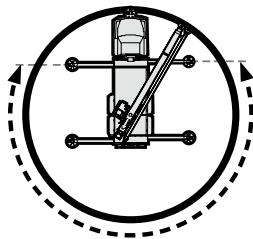
DIMENSIONS

RS 70100

Crane Dimensions



Area of Operation



Mounting Specifications

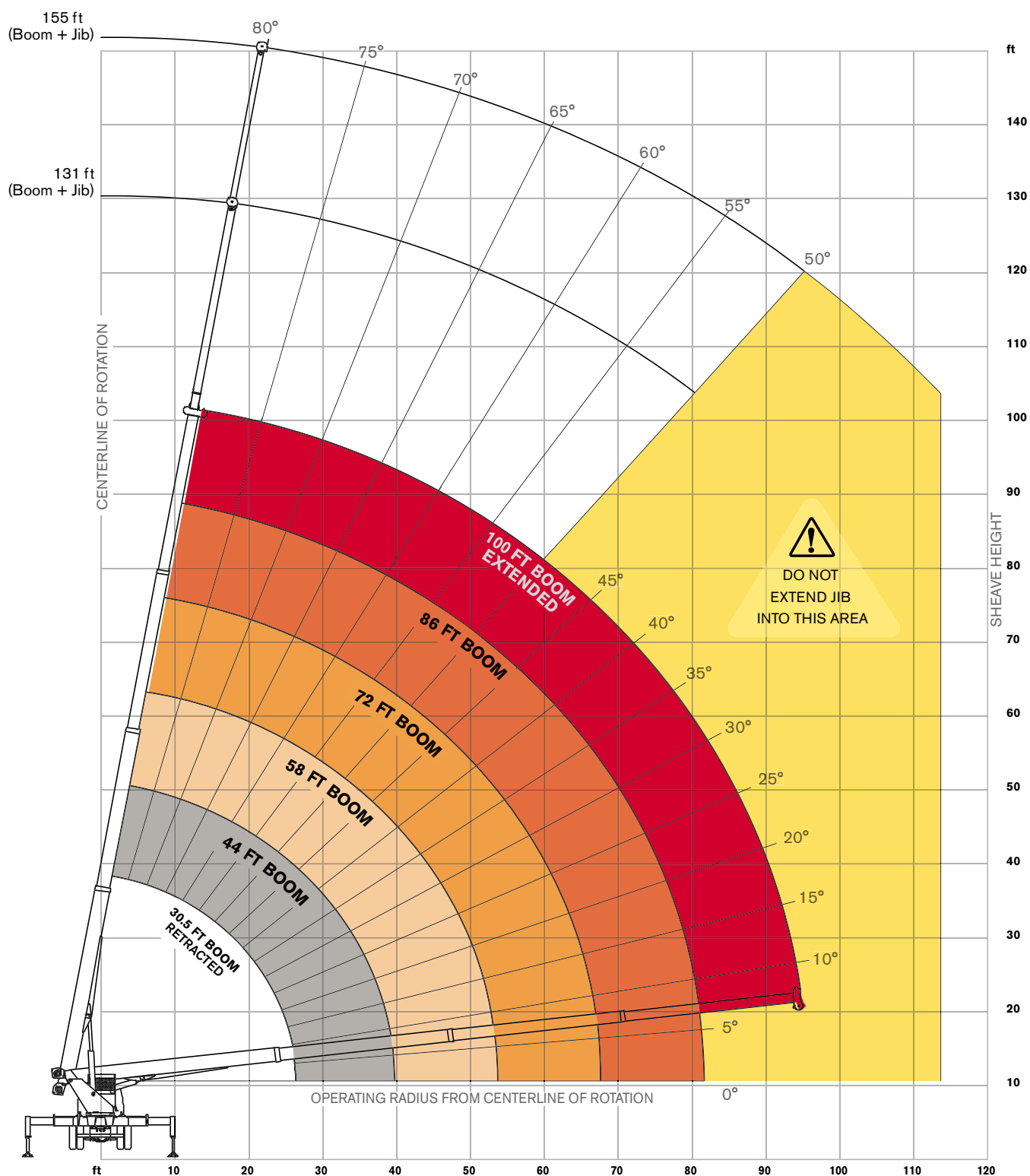
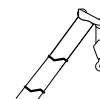
Chassis Recommendation	
Gross Vehicle Weight Rating	60,000 lb
Front Axle Weight Rating	20,000 lb
Rear Axle Weight Rating	40,000 lb
Wheelbase	258 +/- 8 in
Cab to Axle	190 +/- 8 in
Afterframe	92 +/- 4 in
RBM per Frame Rail	3,300,000 lb/in
Frame Height (Unloaded)	40 in
Exhaust	Vertical Right Side
Crane Weight	29,200 lb



RANGE DIAGRAM

RS 70100

Outriggers Fully Extended (100%)



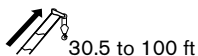
TEREX®





BOOM LOAD CHARTS

RS 70100

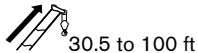
Outriggers Fully Extended (100%)





Standard ASME B30.5

 ft	Boom Length						 ft
	30.5 lb	44 lb	58 lb	72 lb	86 lb	100 lb	
5	70,000						5
8	44,900						8
10	39,000	31,700					10
12	34,400	32,200	31,400				12
15	29,100	27,800	26,700	24,200			15
20	22,300	22,000	21,200	19,200	17,000		20
25	14,900	18,000	17,500	16,000	14,400	12,100	25
30		14,800	14,700	13,300	12,000	10,500	30
35		11,600	12,000	11,500	10,300	9,100	35
40			9,200	9,400	9,100	6,500	40
45			7,200	7,400	7,500	5,600	45
50			5,700	5,900	6,000	4,900	50
55				4,700	4,900	4,200	55
60				3,800	3,900	3,600	60
65				3,000	3,200	3,100	65
70					2,500	2,600	70
75					2,000	2,100	75
80					1,500	1,600	80
85						1,200	85
90						900	90
95						600	95

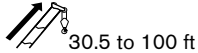
Boom at 0°





Standard ASME B30.5

 °	Boom Length						 °
	30.5 lb	44 lb	58 lb	72 lb	86 lb	100 lb	
0	8,800	5,000	2,900	1,600	700	—	0

With Jib, Retracted and Extended



Standard ASME B30.5

 ft	Jib Capacities for All Boom Lengths								 ft
	80° lb	78° lb	75° lb	70° lb	65° lb	60° lb	55° lb	50° lb	
30.5	6,450	6,000	5,300	4,000	3,300	2,300	1,400	800	30.5
55	3,500	3,500	3,500	3,000	2,300	1,700	1,050	700	55

Notes to lifting capacity

Lifting capacities do not exceed 85% of tipping load. Weight of hook blocks and slings is part of the load, and is to be deducted from the capacity ratings. Consult operation manual for further details.

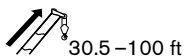
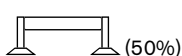
Note: Data published herein is intended as a guide only and shall not be construed to warrant applicability for lifting purposes. Crane operation is subject to the computer charts and operation manual both supplied with the crane.





BOOM LOAD CHARTS

RS 70100

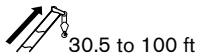
Outriggers Extended Mid-Position (50%)





Standard ASME B30.5

 ft	Boom Length						 ft
	30.5 lb	44 lb	58 lb	72 lb	86 lb	100 lb	
5	70,000						5
8	44,900						8
10	39,000	31,700					10
12	34,400	32,200	31,400				12
15	27,200	27,800	26,700	24,200			15
20	14,800	15,500	15,900	16,100	16,300		20
25	8,900	9,900	10,300	10,500	10,600	10,700	25
30		6,800	7,100	7,300	7,400	7,500	30
35		4,600	5,000	5,200	5,300	5,400	35
40			3,600	3,800	3,900	4,000	40
45			2,500	2,700	2,900	2,900	45
50			1,600	1,900	2,000	2,100	50
55				1,300	1,400	1,500	55
60						1,000	60

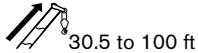
Boom at 0°





Standard ASME B30.5

 °	Boom Length						 °
	30.5 lb	44 lb	58 lb	72 lb	86 lb	100 lb	
0	7,900	3,100	1,100	—	—	—	0

With Jib, Retracted and Extended



Standard ASME B30.5

 ft	Jib Capacities for All Boom Lengths (VERIFY OPERATIONAL MODE SETTING ON LMI DISPLAY BEFORE LIFTING)					 ft
	80° lb	78° lb	75° lb	70° lb	65° lb	
30.5	6,450	6,000	5,300	3,175	1,650	30.5
55	3,500	3,500	3,500	2,800	1,275	55

Notes to lifting capacity

Lifting capacities do not exceed 85% of tipping load. Weight of hook blocks and slings is part of the load, and is to be deducted from the capacity ratings. Consult operation manual for further details.

Note: Data published herein is intended as a guide only and shall not be construed to warrant applicability for lifting purposes. Crane operation is subject to the computer charts and operation manual both supplied with the crane.

**TEREX®**



BOOM LOAD CHARTS

RS 70100

Outriggers Fully Retracted (0%)

(0%)
 30.5 – 100 ft
Standard ASME B30.5

 ft	Boom Length						 ft
	30.5 lb	44 lb	58 lb	72 lb	86 lb	100 lb	
5	64,700						55
8	26,100						8
10	16,200	17,000					10
12	11,000	11,700	12,100				12
15	6,600	7,300	7,700	7,900			15
20	2,600	3,600	3,900	4,100	4,200		20
25		1,500	1,900	2,100	2,200	2,200	25
30						1,000	30

Notes to lifting capacity

Lifting capacities do not exceed 75% of tipping load. Weight of hook blocks and slings is part of the load, and is to be deducted from the capacity ratings. Consult operation manual for further details.

Note: Data published herein is intended as a guide only and shall not be construed to warrant applicability for lifting purposes. Crane operation is subject to the computer charts and operation manual both supplied with the crane.



TECHNICAL DESCRIPTION

RS 70100

Boom, Jib and Rotation

	Four-section full power fully synchronized telescopic keel boom	
	Boom length	30.5–100 ft
	Boom maximum sheave height	110 ft
	Boom elevation angle range (min/max)	-8° / 82°
	Boom head	Quick reeving
	Maximum sheave height: With optional jib 30.5–55 ft	163 ft
	370° non-continuous rotation	

Operator Controls and Operator Aid

	Hoist line pull	15,000 lb
	Hoist line speed (3rd layer)	196 ft/min
	Rope diameter	5/8"
	Breaking strength	45,400 lb
	Overhaul ball	7 t
	1 Sheave block	20 t
	2 Sheave block	30 t
	3 Sheave block	35 t
	1 part line	12,971 lb / 196 ft/min
	2 part line	25,942 lb / 98 ft/min
	3 part line	38,913 lb / 63 ft/min
	4 part line	51,844 lb / 49 ft/min
	5 part line	64,855 lb / 32 ft/min
	6 part line	70,000 lb / 32 ft/min



TECHNICAL DESCRIPTION

RS 70100

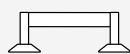


Fully proportional
Independent outrigger controls



Load moment / Rated capacity indicator

Understructure



"H" pattern (out and down),
To outer edge of pad

22 ft 4 in

Optional Features

- Two-stage jib
- Rotation resistant rope
- Multi-part load blocks
- Main hoist with 2 speed motor
- Heavy duty wood flatbeds
- Extra heavy duty wood flatbeds
- Extra heavy duty steel flatbeds
- Radio remote controls
- One-man or two-man baskets
- Hoist drum tensioner
- Continuous rotation
- Oil cooler
- Single front bumper outrigger
- Hydraulic hose reel
- Tool box



RS 70100

www.terexcranes.com

Effective Date: October 2010. Product specifications and prices are subject to change without notice or obligation. The photographs and/or drawings in this document are for illustrative purposes only. Refer to the appropriate Operator's Manual for instructions on the proper use of this equipment. Failure to follow the appropriate Operator's Manual when using our equipment or to otherwise act irresponsibly may result in serious injury or death. The only warranty applicable to our equipment is the standard written warranty applicable to the particular product and sale and Terex makes no other warranty, express or implied. Products and services listed may be trademarks, service marks or trade-names of Terex Corporation and/or its subsidiaries in the USA and other countries. All rights are reserved. Terex® is a registered trademark of Terex Corporation in the USA and many other countries. Copyright 2010 Terex Corporation..

Terex Cranes, Global Marketing, Dinglerstraße 24, 66482 Zweibrücken, Germany
Tel. +49 (0) 6332 830, Email: info.cranes@terex.com, www.terexcranes.com

Brochure Reference: TC-DS-I-E-RS 70100-10/10



WORKS FOR YOU.™