



CROSSOVER 4500

Boom Truck Crane
45T capacity class

Datasheet imperial

PRELIMINARY

CROSSOVER 4500



Features

- ▶ 45 tons @ 9 ft capacity at rated distance from center of rotation
- ▶ 105 ft maximum boom length
- ▶ 110 ft maximum tip height
- ▶ 32/49 ft optional jib
- ▶ 155 ft maximum sheave height with 49 ft jib
- ▶ Operator cab – standard
- ▶ Rated capacity indicator with work area definition

WORKS FOR YOU.™



CONTENTS

CROSSOVER 4500

	Page:
Key	
.....	3
Dimensions	
Crane Dimensions	4-5
Area of Operation	5
Mounting Specifications	5
Range Diagram	6
Load Charts	
Boom	7
Jib	8
Technical Description	
Boom, Jib and Rotation	9
Hoists and Rope	9, 10
Hydraulics	10
Upper Operator Cab	10
Boom Rotation	11
Counterweight	11
Outriggers	11



KEY

CROSSOVER 4500

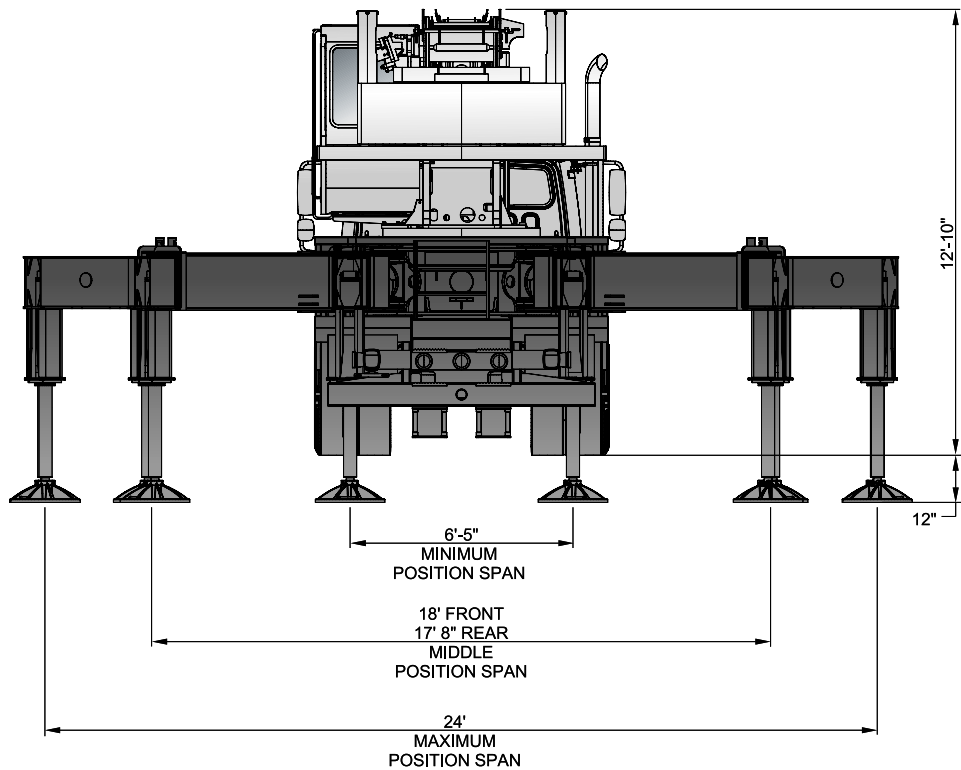
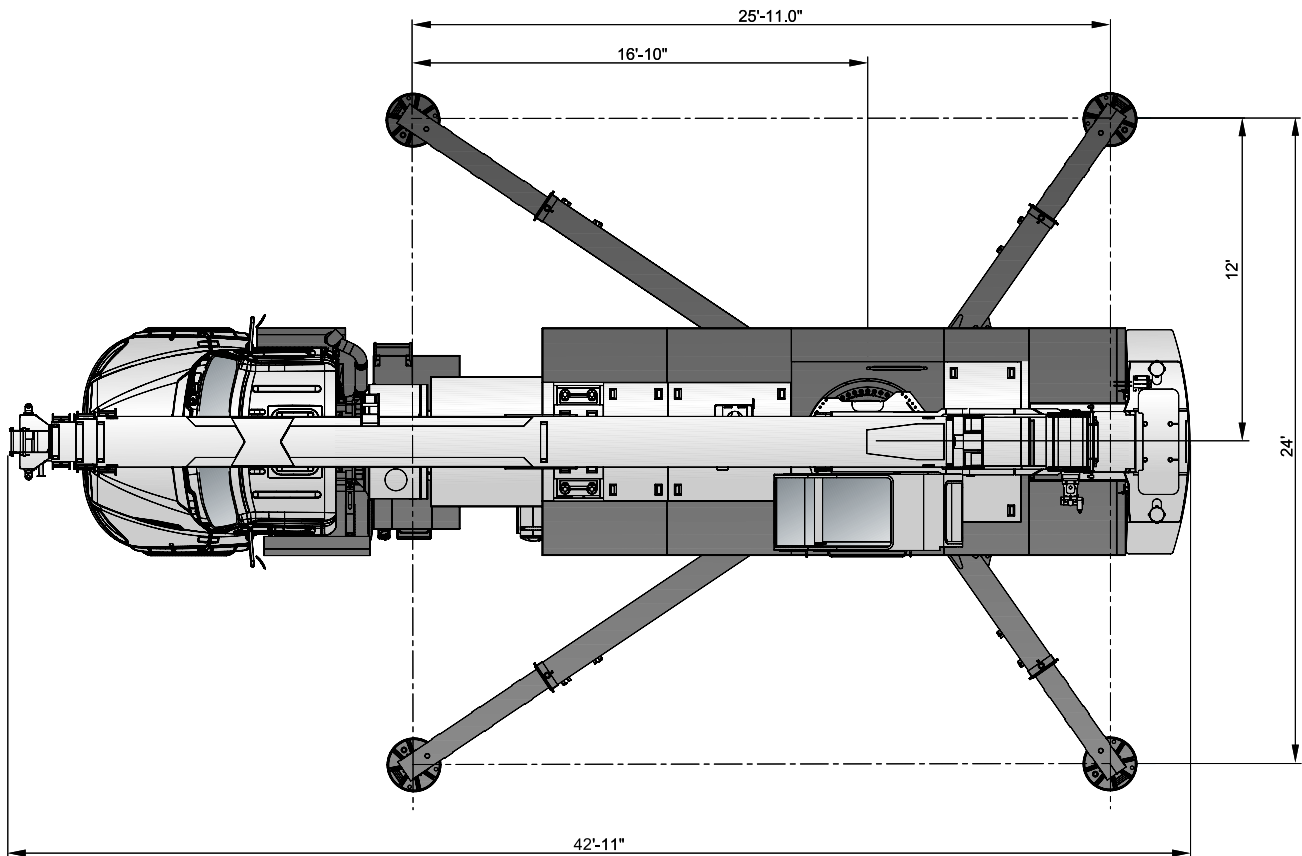
	Main boom		Counterweight
	Boom length		Main Hoist
	Tip height		Auxiliary hoist
	Boom with jib		Hoist line speed
	Telescoping mode		Cab
	Boom angle		Operator aid
	Working radius		Controls
	Main boom with aux head		Hydraulics
	Boom head		Heating / Air conditioning
	Hook block		Outriggers
	Hook to head sheave pin		Rotation / Allowable rotation range
	Rope – Standard / Optional		Slewing brake
	Rope diameter		Boom over the rear
	Rope length		Boom over the front
	Permissible line pull		Area of operation
	Maximum line pull		



DIMENSIONS

Crane Dimensions

CROSSOVER 4500



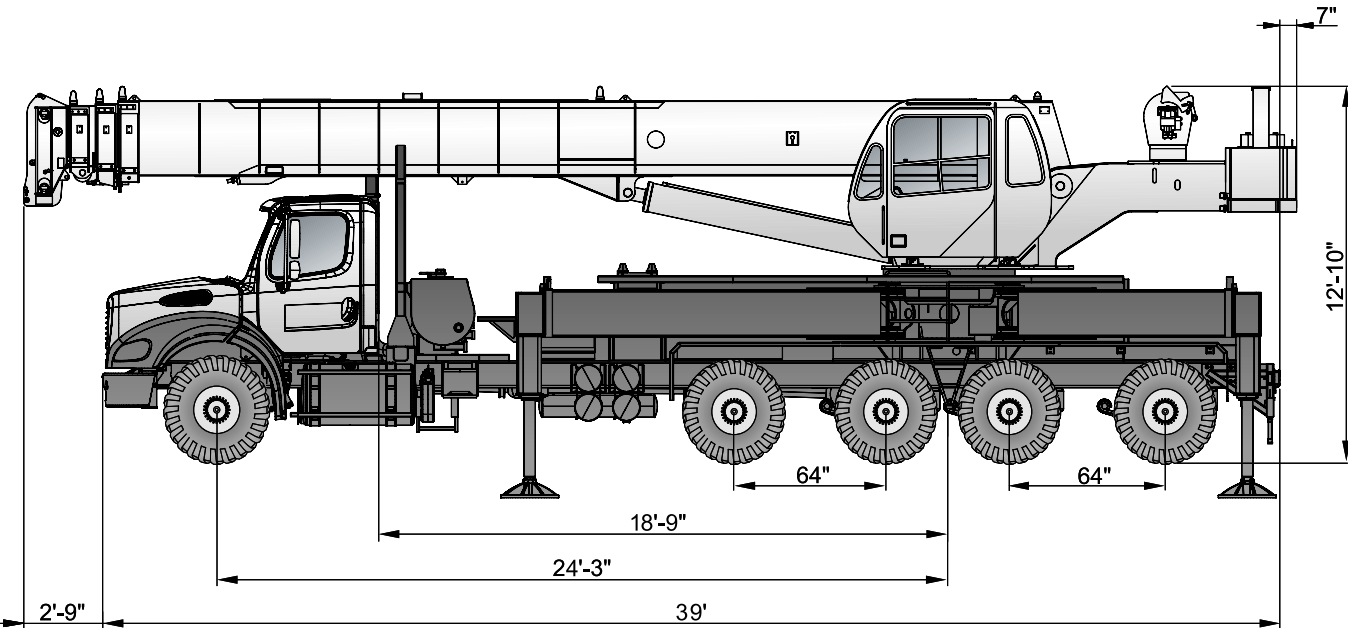
TEREX®



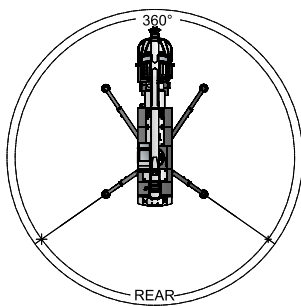
DIMENSIONS

CROSSOVER 4500

Crane Dimensions



Area of Operation



Mounting Specifications

Gross Vehicle Weight Rating	88,000 lb
Front Axle Weight Rating	20,000 lb
Rear Axle Weight Rating	40,000 lb
Pusher	20,000 lb
Tag	8,000 lb
Wheelbase	291 in
Cab to Axle	225 in
Afterframe	124 in
RBM per Frame Rail	3,300,000 lb-in
Frame Height (Unloaded)	42 in

Base machine 65,000 lb
 Crane fitted with jib and mounted on freightliner chassis.

Estimated minimum chassis weight:

Front axle	11,000 lb*
Tandem axles	13,000 lb*
Total weight	24,000 lb

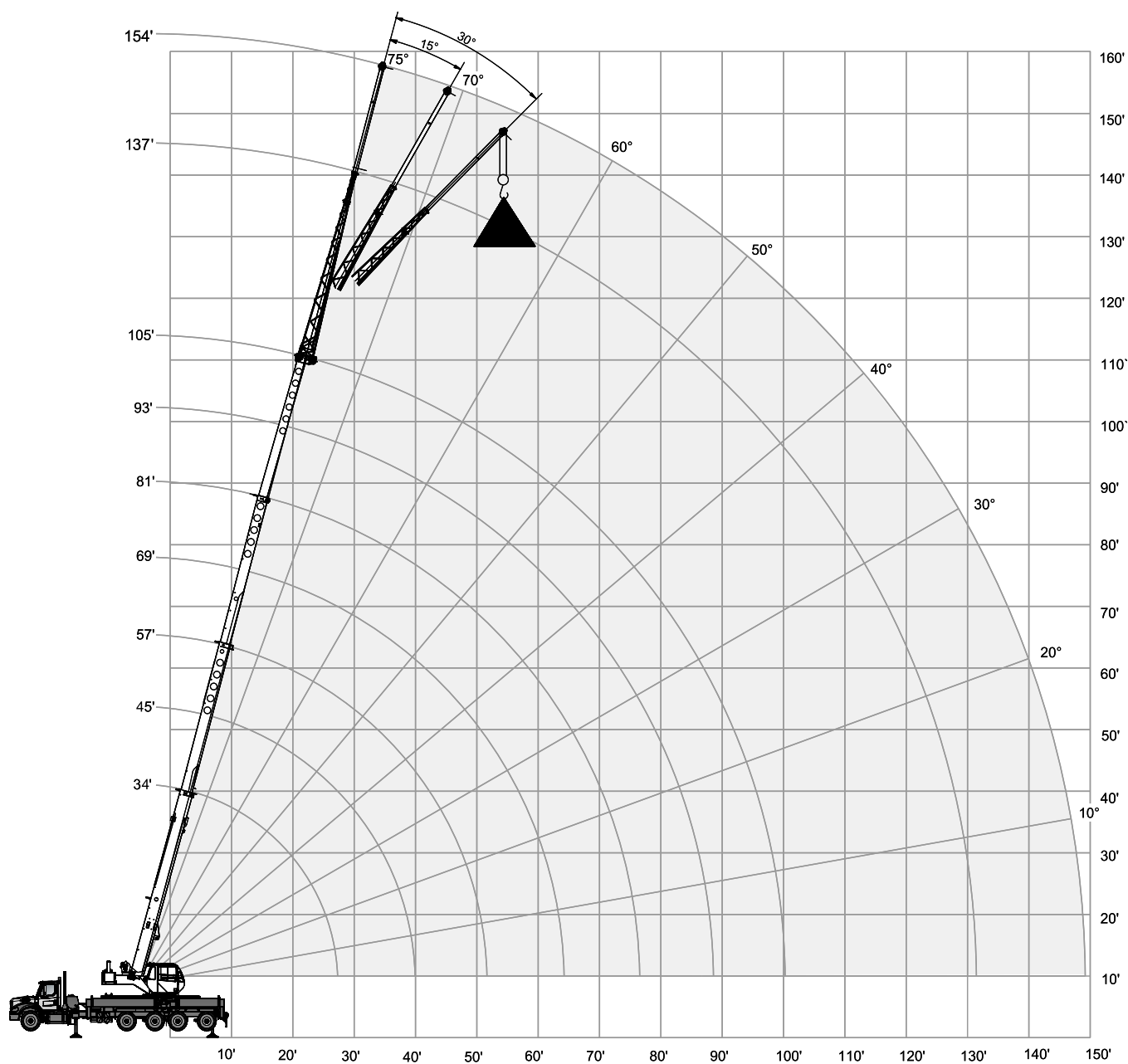
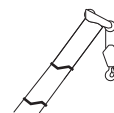
* Minimum bare chassis weight requirements. Must ballast to minimum if required.



RANGE DIAGRAM

CROSSOVER 4500

Outriggers Fully Extended (100%)




TEREX®



















BOOM LOAD CHART

CROSSOVER 4500

Outriggers Fully Extended (100%)

 2,000 lbs (100%) over rear 360° 34 to 105 ftStandard ASME
B30.5

	Boom Length														
	34 ft		45 ft		57 ft		69 ft		81 ft		93 ft		105 ft		
															
ft	lbs	lbs	lbs	lbs	lbs	lbs	lbs	lbs	lbs	lbs	lbs	lbs	lbs	lbs	ft
9	90,000	90,000													9
10	64,400	64,400	46,500	46,500											10
12	58,000	58,000	46,500	46,500	46,500	46,500									12
15	50,700	50,700	46,500	46,500	44,500	44,500	41,600	41,600							15
20	36,000	36,000	36,900	36,900	36,400	36,400	34,800	34,800	30,600	30,600					20
25	27,100	27,100	28,100	28,100	28,600	28,600	29,000	29,000	26,000	26,000	23,400	23,400			25
30			22,100	22,100	22,700	22,700	23,000	23,000	22,500	22,500	20,300	20,300	18,600	18,600	30
35			17,800	17,800	18,400	18,400	18,800	18,800	19,000	19,000	17,700	17,700	16,200	16,200	35
40			14,500	14,500	15,200	15,200	15,600	15,600	15,800	15,800	15,600	15,600	14,400	14,400	40
45					12,700	12,700	13,100	13,100	13,400	13,400	13,500	13,500	12,900	12,900	45
50					10,700	10,700	11,100	11,100	11,400	11,400	11,500	11,500	11,600	11,600	50
55							9,500	9,500	9,700	9,700	9,900	9,900	10,100	10,100	55
60							8,100	8,100	8,400	8,400	8,600	8,600	8,700	8,700	60
65									7,200	7,200	7,400	7,400	7,500	7,500	65
70									6,200	6,200	6,400	6,400	6,500	6,500	70
75									5,300	5,200	5,500	5,400	5,700	5,500	75
80											4,800	4,500	4,900	4,700	80
85											4,100	3,800	4,300	3,900	85
90													3,700	3,300	90
95													3,100	2,800	95
100													2,600	2,300	100

Notes to lifting capacity

Lifting capacities do not exceed 85% of tipping load. Weight of hook blocks and slings is part of the load, and is to be deducted from the capacity ratings. Consult operation manual for further details.

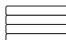
Note: Data published herein is intended as a guide only and shall not be construed to warrant applicability for lifting purposes. Crane operation is subject to the computer charts and operation manual both supplied with the crane.









LOAD CHART

CROSSOVER 4500

With Jib, Extended

 2,000 lbs (100 %) 360°Standard ASME
B30.5

32 ft Offsettable Jib					
0°		15°		30°	
 ft	lbs	 ft	lbs	 ft	lbs
43	9,200	51	8,400	57	6,500
47	8,800	55	8,100	61	6,300
51	8,400	59	7,700	65	6,200
56	7,800	64	7,300	70	5,900
62	7,200	69	6,700	75	5,800
68	6,300	75	5,600	80	5,500
74	5,200	81	4,800	85	4,800
80	4,300	87	4,100	90	4,000
87	3,600	93	3,400	97	3,400
94	3,000	99	2,800	102	2,800
101	2,400	105	2,300	107	2,200
108	1,800	112	1,700	113	1,700
115	1,300	119	1,300	120	1,300
112	900	125	900		

49 ft Offsettable Jib					
0°		15°		30°	
 ft	lbs	 ft	lbs	 ft	lbs
47	5,000	57	3,300	66	2,600
52	4,700	63	3,200	71	2,600
58	4,400	69	3,100	76	2,500
65	4,000	76	2,900	82	2,400
72	3,700	83	2,800	89	2,400
79	3,500	89	2,700	95	2,300
86	3,300	95	2,600	101	2,300
93	3,000	102	2,500	107	2,200
101	2,800	108	2,400	113	2,200
108	2,400	114	2,200	119	2,100
115	1,900	120	1,800	125	1,700
122	1,500	127	1,400	131	1,300
130	1,100	134	1,000	136	1,000
139	700	141	700		

Notes to lifting capacity

Lifting capacities do not exceed 85% of tipping load. Weight of hook blocks and slings is part of the load, and is to be deducted from the capacity ratings. Consult operation manual for further details.

Note: Data published herein is intended as a guide only and shall not be construed to warrant applicability for lifting purposes. Crane operation is subject to the computer charts and operation manual both supplied with the crane.



TECHNICAL DESCRIPTION

CROSSOVER 4500

Boom, Jib and Rotation

	Four-section full power fully synchronized telescopic boom		
	Boom length	Retracted Extended	34 ft 105 ft
	Boom maximum tip height		115 ft
	Boom elevation angle range (min. / max.)		-4° / 77°
	Boom head		quick reeving
	Swing-On Jib – fixed length – can be offset to 0°, 15° or 30° Maximum tip height with fixed jib Swing-On Jib – adjustable length – can be offset to 0°, 15° or 30° Maximum tip height with extended jib		32 ft 140 ft 32 ft / 49 ft 158 ft
	360° continuous rotation		
	4 metallic sheaves Quick reeving design		45 T
	Top swivel ball with hook and latch		7 T
	Independent outrigger controls		
	Load moment / Rated capacity indicator with work area definition ATB system		



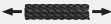


Hoists and Rope

	Two speeds First layer (no load speed) Fifth layer (no load speed)	Low Speed: 167 ft/min 242 ft/min	High Speed: 335 ft/min 487 ft/min
	First layer Fifth layer	Low Speed: 15,639 lb 10,827 lb	High Speed: 7,298 lb 5,052 lb
	Permissible line pull		9,000 lb
	6 x 19 IWRC XIPS		
	Maximum useable		455 ft
	0.625 in		



TECHNICAL DESCRIPTION





CROSSOVER 4500

	Two speeds First layer (no load speed) Fifth layer (no load speed)	Low Speed: 167 ft/min 242 ft/min	High Speed: 335 ft/min 487 ft/min
	First layer Fifth layer	Low Speed: 15,639 lb 10,827 lb	High Speed: 7,298 lb 5,052 lb
	Permissible line pull		9,000 lb
	Optional		
		Rotation resistant compacted strand 18 x 19	
			0.625 in

Hydraulics

	Triple pump: Hoist pump Boom lift / telescope Outrigger / swing	60.3 gal/min @ 3,500 psi 45.1 gal/min @ 3,500 psi 22 gal/min @ 2,500 psi
	Single pump: Power steering	8 gal/min @ 2,000 psi
	Full flow with bypass protection: Suction Return	250 micron screen 5 micron filter
	Pressurized tank with sight level gauge	91 gal

Upper Operator Cab



	Upper cab Sliding door on left side Sliding window on the right side Tilting, tinted glass skylight Removable front windshield Six-way adjustable seat with armrest dual-axis electro-proportional joysticks Joystick control for hoist(s), swing and boom elevation Foot pedals for swing brake, boom telescope and engine rpm Hand control for engine rpm
 	Optional features for upper cab Air conditioning – hydraulically powered Heater and air conditioning package – hydraulically powered Liquid propane (LP) cab heater Single-axis armrest mounted controls Work lights
	Rated capacity indicator with pictograph display of boom radius, boom angle, boom length, allowable load, actual load and % of allowable load Settable alarms for swing angle, boom length, boom angle, tip height and work area exclusion zone




TECHNICAL DESCRIPTION

CROSSOVER 4500

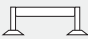
Boom Rotation

	Foot pedal actuated multi-disc brake and air actuated 360° house lock	
	Hydraulic driven double planetary reduction gear drive	2.8 rev/min

Counterweight

	Main counterweight, non removable bolted to upper crane structure	2,000 lb counterweight package
---	---	--------------------------------

Outriggers

	X-pattern		
	MAX	Front: Swing, Out and Down To outer edge of pad	26 ft
		Rear: Swing, Out and Down To outer edge of pad	26 ft
	MID	Front: Swing, Out and Down	20 ft
		Rear: Swing, Out and Down	19.5 ft



CROSSOVER 4500

www.terexcranes.com

Effective Date: October 2011.

Product specifications and prices are subject to change without notice or obligation. The photographs and/or drawings in this document are for illustrative purposes only. Refer to the appropriate Operator's Manual for instructions on the proper use of this equipment. Failure to follow the appropriate Operator's Manual when using our equipment or to otherwise act irresponsibly may result in serious injury or death. The only warranty applicable to our equipment is the standard written warranty applicable to the particular product and sale and Terex makes no other warranty, express or implied. Products and services listed may be trademarks, service marks or trade-names of Terex Corporation and/or its subsidiaries in the USA and other countries. All rights are reserved. Terex® is a registered trademark of Terex Corporation in the USA and many other countries.

Copyright 2011 Terex Corporation

Terex Cranes, Global Marketing, Dinglerstraße 24, 66482 Zweibrücken, Germany
Tel. +49 (0) 6332 830, Email: info.cranes@terex.com, www.terexcranes.com

Brochure Reference: TC-DS-I-E-Crossover4500-10/11



WORKS FOR YOU.™