



TADANO

HYDRAULIC TRUCK LOADER CRANES



ZF103

1 ton capacity (1.1 short tons)



1,000 kg Large-Scale Capacity in Compact-Scale Body



Wide-Stance Outriggers

The outriggers extend 700 mm to the right and 1,160 mm to the left to provide solid stability and give the ZF103 the widest outrigger width for models in its class. (717 mm width is also available) Both left outrigger telescoping and vertical telescoping can be performed safely and easily.

Extensive Safety Features

An wide array of features team up to boost safe operation. Features include the overwinding alarm, hook safety latch, holding valves, hydraulic safety valves, load indicator and load meter. Not only do these feature enhance safety, but they also make operation easier and more efficient.





ZF103

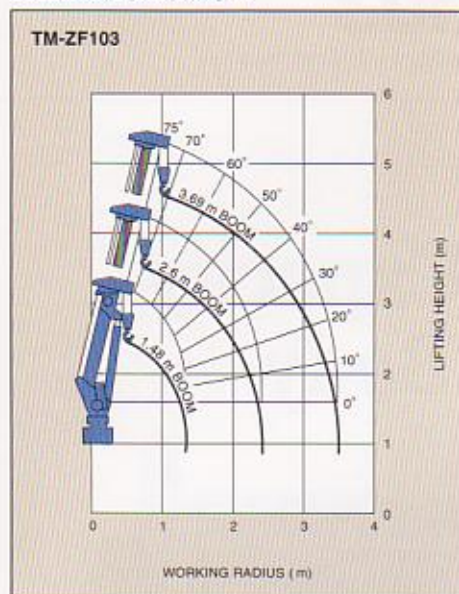
TOTAL RATED LOADS

TM-ZF103	
Working Radius (m)	Total Rated Load (kg)
1.7	1,000
2.0	830
2.5	650
3.0	520
3.5	440

NOTES:

1. Each total rated load includes weight of the hook (12 kg) and slings.
2. The above numerical values of total rated loads are based on crane strength only. The total rated loads based on stability may be lower than those in the above table depending on the loading conditions and the types of the chassis.

WORKING RANGE

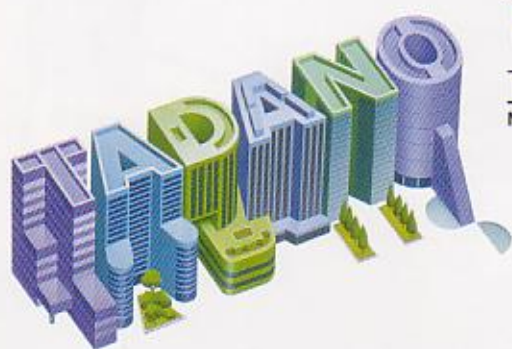


NOTE: The above lifting heights and boom angles are based on a straight (unladen) boom, and allowance should be made for boom deflection obtained under laden conditions.

TECHNICAL SPECIFICATIONS

MODEL	ZF103
MAXIMUM CAPACITY	1,000 kg at 1.7 m
BOOM	Fully hydraulic telescoping boom
Type	
Sections	3
Length	1.48 – 3.69 m
Extension speed	2.21 m/10 sec.
Elevation range/speed	0° – 75° in 4 sec.
Maximum hook height*	Approx. 4.7 m*
Maximum working* radius	3.5 m*
WINCH	Hydraulic motor driven Worm gear speed reduction, provided with worm self-lock brake
Permissible single line pull	340 kg
Max. single line speed	43.2 m/min. (at 4th layer)
Wire rope	Diameter x length: 6.3 mm x 22 m
SWING	Hydraulic cylinder driven (rack and pinion)
Speed	200°/7 sec.
OUTRIGGERS	Hydraulic operated jacks, integral with crane frame, Power up and down
Extended width	700 mm to right 717 mm and 1,160 mm to left
HYDRAULIC SYSTEM	
Pump	Single gear pump
Control valves	Multiple control valves with integral safety valve
STANDARD SAFETY EQUIPMENT	<ul style="list-style-type: none"> ● Load meter ● Load indicator ● Overwinding alarm ● Hook safety latch ● Hydraulic safety valves, check valves and holding valves
SUITABLE TRUCKS	Gross vehicle weight approx. 3.8 to 7 tons

- NOTES: 1. Operating speeds of the crane are guaranteed under the condition that the pump delivery is 44 liter/min.
2. * No allowance made for boom deflection under laden condition.

**TADANO****TADANO LTD.**

4-12, Kamezawa 2-chome,
Sumida-ku, Tokyo 130-0014, Japan
Tel: 81-(0)3-3621-7752
Fax: 81-(0)3-3621-7785