

**TS-75ML****TOTAL RATED LOADS**

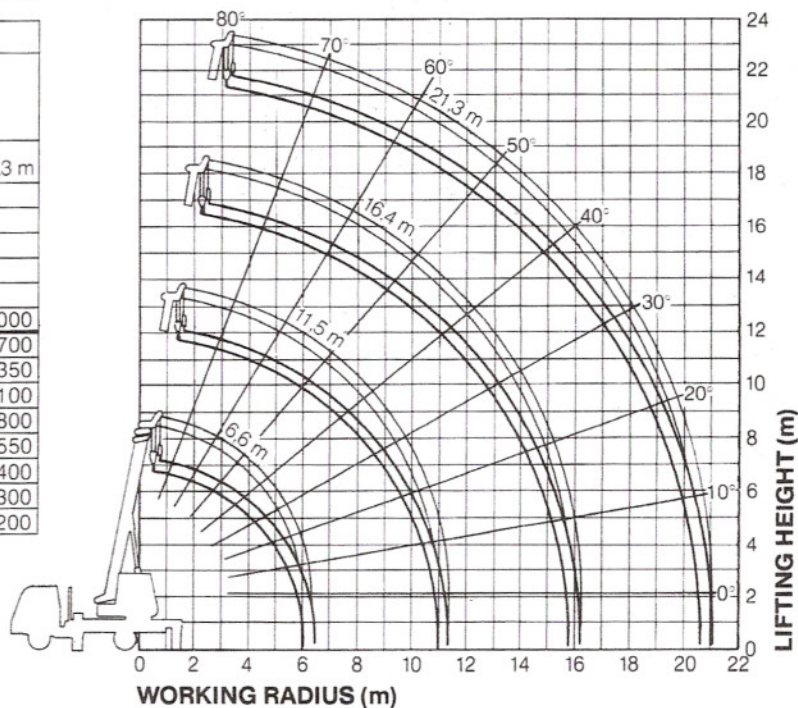
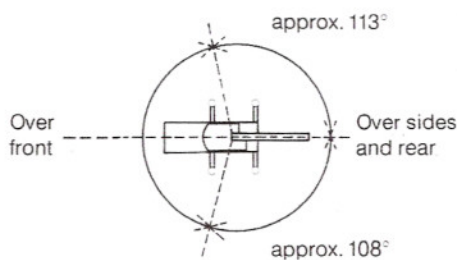
DIN 15019.2-75%

Unit : kg

Outriggers fully extended								
Front jack extended (360°) Front jack not extended (Over sides and rear)					Front jack not extended (Over front)			
B \ A	6,6 m	11,5 m	16,4 m	21,3 m	6,6 m	11,5 m	16,4 m	21,3 m
2,0 m	7 000				7 000			
2,5 m	7 000				7 000			
3,0 m	6 100	4 900			5 200	4 900		
3,5 m	5 300	4 600	3 500		3 800	3 900	3 500	
4,0 m	4 350	4 300	3 200		2 700	2 800	2 800	
4,5 m	3 600	3 700	3 000	2 000	1 900	2 100	2 100	2 000
5,0 m	3 000	3 100	2 800	2 000	1 500	1 600	1 600	1 700
5,5 m	2 550	2 650	2 600	1 850	1 200	1 300	1 300	1 350
6,0 m	2 250	2 350	2 400	1 700	900	1 050	1 050	1 100
7,0 m		1 800	1 850	1 450		750	750	800
8,0 m		1 450	1 500	1 250		500	500	550
9,0 m		1 200	1 250	1 100		350	350	400
10,0 m		1 000	1 050	950		250	250	300
10,9 m		850	850	850		150	150	200
12,0 m			700	750				
13,0 m			600	650				
14,0 m			500	550				
15,0 m			400	450				
15,8 m			350	400				
17,0 m				350				
18,0 m				280				
19,0 m				230				
20,0 m				180				
20,5 m				150				

A : Boom length

B : Working radius

WORKING RADIUS - LIFTING HEIGHT**WORKING AREA DIAGRAM****Note:**

- Total rated loads shown in the table are based on the condition that the crane is set on firm ground horizontally. Those above bold lines are based on the crane strength and those below, on its stability.
- Total rated loads below the bold lines do not exceed 75% of tipping load.
- Each total rated loads includes weight of the hooks (65 kg for 7 ton capacity, 20 kg for 1.3 ton capacity), and slings.
- 50 kg shall be subtracted from the rated lifting loads of the main boom, when single top is attached to main boom head.
- Standard number of part lines for each boom length is as shown below. Load per line should not surpass 1.230 kg for main winch and 1.300 kg for auxiliary winch.

Boom length (m)	6,6 m	11,5 m	16,4 m	21,3 m	Single top
No. of part lines	6	4	4	4	1

- For total rated load of single top, reduce load shown in following table from relevant total rated load.

Total rated loads of single top should not exceed 1.300 kg.

Boom length (m)	6,6 m	11,5 m	16,4 m	21,3 m
Load reduction	0 kg	30 kg	40 kg	50 kg