



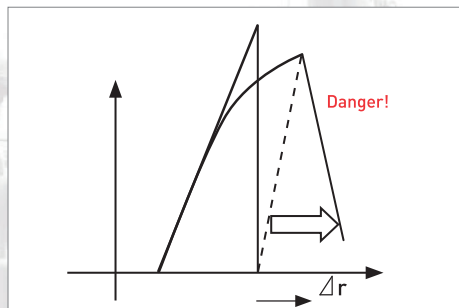
# BETTER SAFE THAN SORRY.

Accidents are always a risk when working with cranes. For this reason, we do everything we can to keep this risk as low as possible.

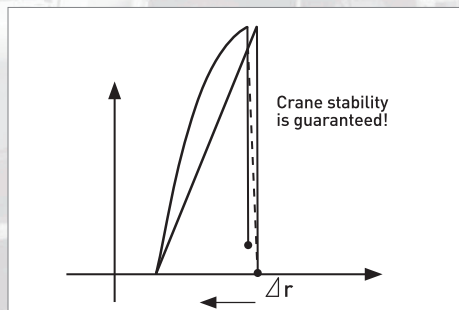
With our unique Lift Adjuster on the crane, a technical steering control system allows better control over difficult crane work. The Lift Adjuster is activated by the crane driver and helps considerably in keeping the load from swinging outwards when it is picked up, as normally occurs due to the strain displacement of the main boom.

This means the crane driver can focus his full attention on the load and what's around it, including the employees involved.

The Lift Adjuster offers particular advantages when the crane driver cannot see the load. The Lift Adjuster ensures gentle and swing-free lifting of the load, and therefore more safety for the valuable cargo and the people standing near it.



WITHOUT Lift Adjuster



WITH Lift Adjuster

Even if the load and the load environment are in sight, the Lift Adjuster offers many advantages. The crane driver can dedicate all of his attention to the critical task of lifting the load, as he doesn't need to watch the crane equipment to maintain the load radius.



The Lift Adjuster is activated at the touch of a button and automatically turns itself off again once the safe load torque has been reached.



If the load and load environment are out of sight, the danger of crane accidents increases significantly.

**WORK SAFELY WITH  
YOUR CRANE – USE  
OUR LIFT ADJUSTER.**