



# SPYDERCRANE URW546 MINI-CRAWLER CRANE



## TECHNICAL SPECIFICATIONS

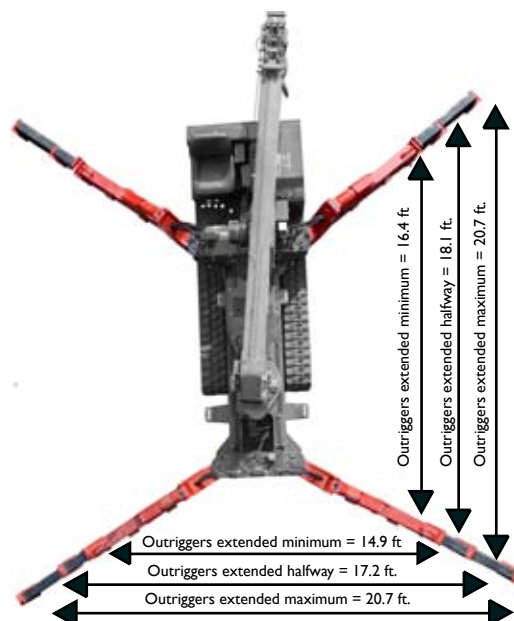
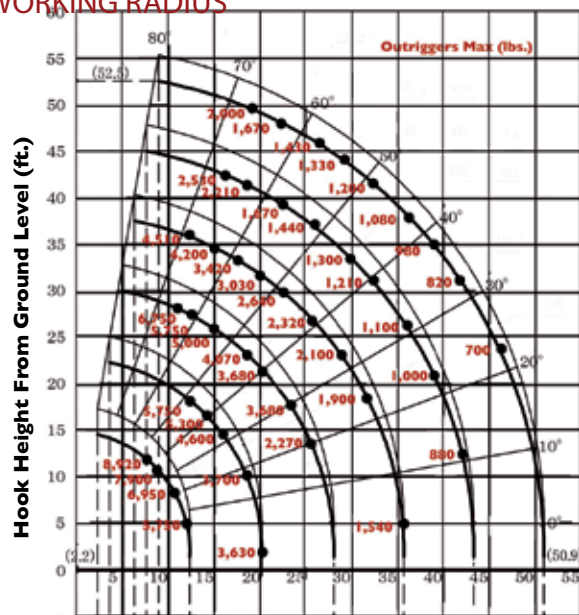
ASME/B-30.5 Compliant

### DESIGNED TO GO WHERE OTHER CRANES CAN'T

Engineered and manufactured by the Japanese crane industry leader FURUKAWA UNIC Corp., the SPYDERCRANE offers versatility, maneuverability and lifting capacity in a compact design which enables you to quickly, safely and easily meet all of your restricted and confined-area lifting requirements. SPYDERCRANES are distributed in North America by SPYDERCRANE Sales, LLC. of Arizona. Each unit is backed by our 20-plus years of industry and application experience, complete inventory of genuine spare parts and accessories, and superior local service support.



### WORKING RADIUS



### LOAD CHART

Lifting capacity varies depending on outrigger configuration and boom length and angle.

ALL BOOMS RETRACTED AND SECOND STAGE EXTENDED										
Working Radius (ft.)	8.0	9.5	11.0	13.0	14.0	16.0	19.0	19.5	20.1	
Outriggers Maximum (lbs.)	8,920	7,900	6,950	5,750	5,300	4,600	3,810	3,700	3,630	
Outriggers Halfway (lbs.)	8,920	7,900	6,950	5,600	5,050	4,300	3,360	3,230	3,100	
Outriggers Minimum (lbs.)	8,920	7,900	6,950	5,430	4,850	3,900	2,700	2,530	2,310	
THIRD STAGE EXTENDED										
Working Radius (ft.)	11.5	13.0	15.0	16.0	18.0	20.0	21.0	23.0	24.0	26.0
Outriggers Maximum (lbs.)	6,720	5,750	5,000	4,600	4,070	3,680	3,450	3,080	2,850	2,560
Outriggers Halfway (lbs.)	6,720	5,450	4,620	4,300	3,750	3,090	2,820	2,400	2,100	1,760
Outriggers Minimum (lbs.)	6,720	5,450	4,400	3,900	3,080	2,450	2,150	1,760	1,550	1,250
FOURTH STAGE EXTENDED										
Working Radius (ft.)	13.0	14.0	15.0	16.0	18.0	20.0	23.0	26.0	29.0	32.0
Outriggers Maximum (lbs.)	4,510	4,510	4,200	3,900	3,420	3,030	2,640	2,320	2,100	1,900
Outriggers Halfway (lbs.)	4,510	4,510	4,000	3,740	3,300	2,900	2,400	1,680	1,460	1,150
Outriggers Minimum (lbs.)	4,510	4,510	3,980	3,730	3,090	2,450	1,760	1,240	1,020	820
FIFTH STAGE EXTENDED										
Working Radius (ft.)	16.0	18.0	20.0	23.0	26.0	30.0	33.0	36.0	39.0	43.2
Outriggers Maximum (lbs.)	2,530	2,210	1,980	1,670	1,440	1,300	1,210	1,100	1,000	880
Outriggers Halfway (lbs.)	2,340	2,140	1,950	1,650	1,430	1,220	1,090	970	780	660
Outriggers Minimum (lbs.)	2,310	2,090	1,850	1,540	1,230	960	760	660	550	440
SIXTH STAGE EXTENDED										
Working Radius (ft.)	19.0	23.0	26.0	29.0	33.0	36.0	39.0	43.0	46.0	49.0
Outriggers Maximum (lbs.)	2,000	1,670	1,430	1,330	1,200	1,080	980	820	700	580
Outriggers Halfway (lbs.)	1,210	990	890	790	660	610	550	490	430	390
Outriggers Minimum (lbs.)	1,210	990	890	790	660	570	510	430	390	350

# UNIC



## URW546 MINI-CRAWLER CRANE

		URW546C IURS	URW546C IUMRS
Crane capacity	Capacity:	8,920 lbs. @ 8.0 ft.	
Max working radius	Maximum:	2.2 to 50.9 ft.	
Max lifting height	Approximate:	52.5 ft.	
Turning radius (ft.)	Minimum:	TURNS WITHIN IT'S DIMENSIONS	
Dimensions (ft.)	Folded: (l x w x h)	16 X 4.52 X 6.67	
Weight	Unladen:	10,825 lbs	11,155 lbs
Outrigger point loading	Maximum:	Specific point landing available upon request	
Winch speed	Approximate:	Single line speed: 144.3 ft./minute at 4th layer Hook Speed: 36.1 ft./min at 4th layer with 4-part line	<b>Diesel</b> <b>Electric</b> Single line speed: 131.2 ft./minute at 4th layer Hook Speed: 32.8 ft./min at 4th layer with 4-part line
Telescopic system	Boom Length:	12.8 to 51.5 ft.	
	Hydraulic Telescopic with holding valves:	38.67 ft./35 sec	<b>Diesel</b> <b>Electric</b> 38.67 ft./35 sec      38.67 ft./48 sec
	Boom type:	6- section hydraulicity telescoping boom, hexagonal box construction	
Boom lift speed	Hydraulic with holding valves	0° to 80°/18 sec	<b>Diesel</b> <b>Electric</b> 0° to 80° /18 sec      0° to 80° /25 sec
Swing rotation	Worm Drive	360 degrees continuous	
Traction System	Travel Speed:	Two Speed	Low: 1.86 mph      High: 3.92 mph
	Gradability:	23°	
	Track ground pressure:	6.54 psi	
Engine / Motor	Manufacturer:	Mitsubishi	
	Fuel Capacity:	10.51 gal	10.51 gal      N/A
	Maximum output:	24 HP	<b>Diesel</b> <b>Electric</b> 24 HP      10 HP
	Starting method:	Electric start as standard	
	Type:	Diesel	Diesel & Electric
Standard and safety equipment	Full-function radio remote, centrally located infinite variable controls, onboard self-diagnostic computer system, hexagonal boom, anti-two block system, automatic hook stow system, hook safety latch, over-winding prevention device and alarm, working area limitation minimum wire rope automatic stop, hydraulic circuit pressure relief valve and bubble-style level for outrigger leveling, Rated Capacity Indicator, (L.M.I) Interlock Monitoring Outrigger System.		

Product specifications are subject to change without notice. No specific training or license is required to operate the SPYDERCRANE in most areas, but operators are responsible for knowing and meeting all local safety requirements and regulations.