

**SPIERINGS  
KRANEN**Mark: **SPIERINGS** Typ: **SK345-AT3****Crane identification**

Serial number:

Year of construction:

Crane group : 3 as per NEN 2018  
 Loadspectrum : 2 as per NEN 2018  
 Classification : A as per NEN 2018  
 Stability : as per NEN 2022

Identification-  
number**41 tm**

Max. load

**5,0 tonne**Max.radius  
with max. load**9,3 m**

Max. capacity

**46,5 tm**

Max. jib lenght

**30,4 m****Speeds**

Jib horizontal / jib 30° luffed



m/min

kg

11

5000

18

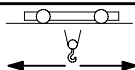
2500

35

1200

50

0



0 - 40 m/min



0 - 0,9 rpm

All motions with hydraulic proportional controls

Luffing the Jib 30° can be controlled from crane cab or via remote control

Driving with erected tower and jib, only with the jib horizontal and positioned over the front carriage, platform locked to the carrier and the outriggers fully extended (max. inclination 2°)

Rated lifting capacity is net capacity

Crane equipped with full counterweight: 7080 kg

360° continuous slewing,  
with outriggers out and down2 Outriggers positons: 6,90 x 5,40 m  
6,90 x 3,80 m

Operation allowed up to a windforce of 8 on the Beaufortscale. (wind speed 20 m/sec.)

Sail area of the load max. 1,0 m<sup>2</sup>/ tonne at a windforce of 8 on the Beaufortscale.

Operating temperature range from -15° to 40° C.

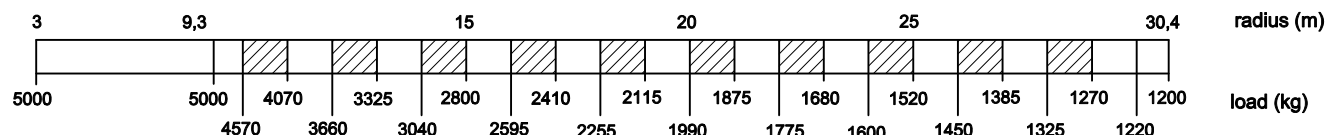
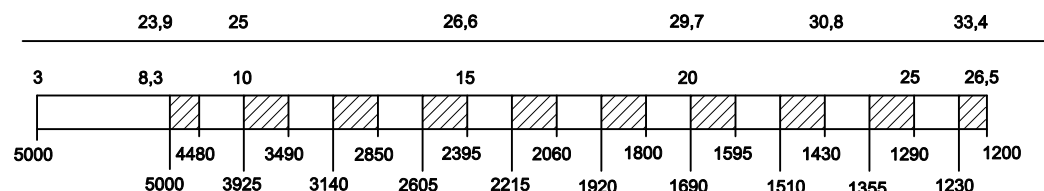
In all cases 2 parts of line

Max. line pull force 2500 kg

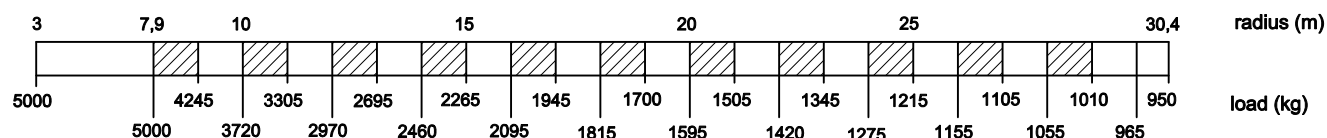
The crane should be folded in at a windforce &gt;9 (21m/sec) or when not in use for a longer period

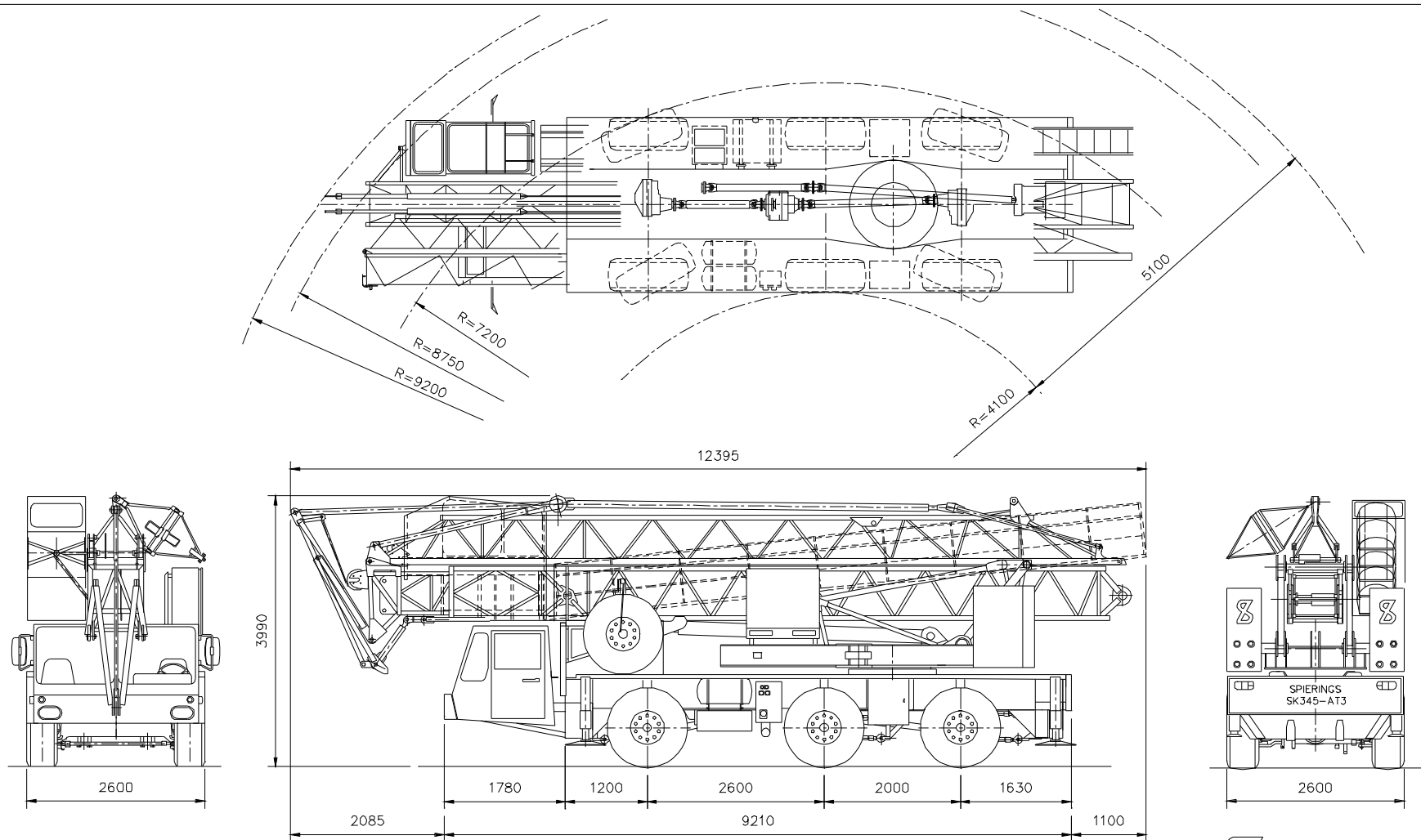
**LIFTING CHART Outrigger spread 6,90 m x 5,40 m****Jib horizontal**

Hookheight 19 m (height under jib 20.8 m)

**Jib offset +30°****LIFTING CHART Outrigger spread 6,90 m x 3,80 m****Jib horizontal**

hookheight 19 m (height under jib 20.8 m)





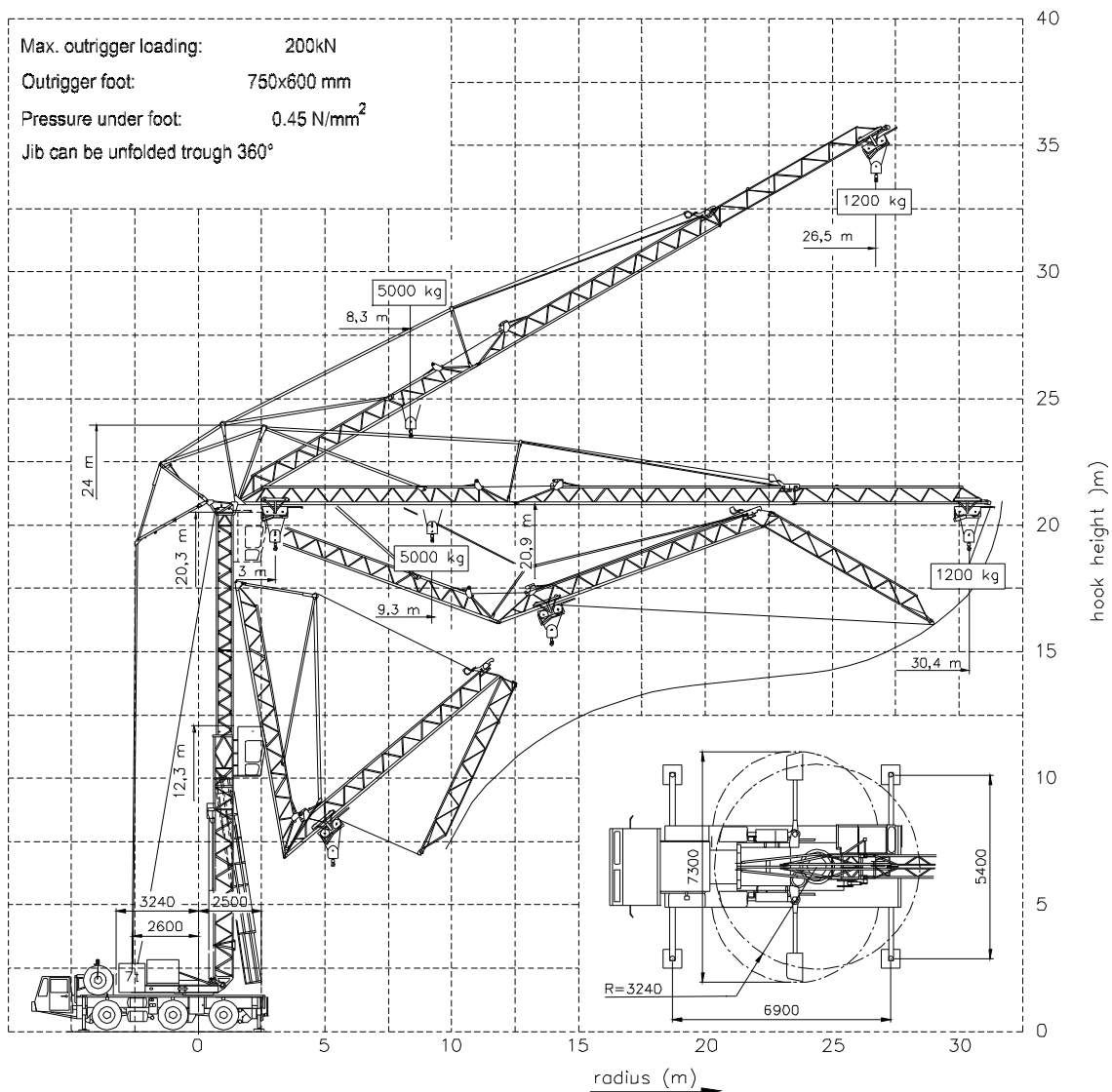
**SPIERINGS HYDRAULIC FOLDING CRANE**  
**SK345-AT3**



**SPIERINGS  
KRANEN**

Merwedestraat 15  
5347 KZ Oss NL  
Tel. 0412-626964  
Fax 0412-645299

Total weight: 36000 kg



## SPIERINGS HYDRAULIC FOLDING CRANE SK 345 - AT3

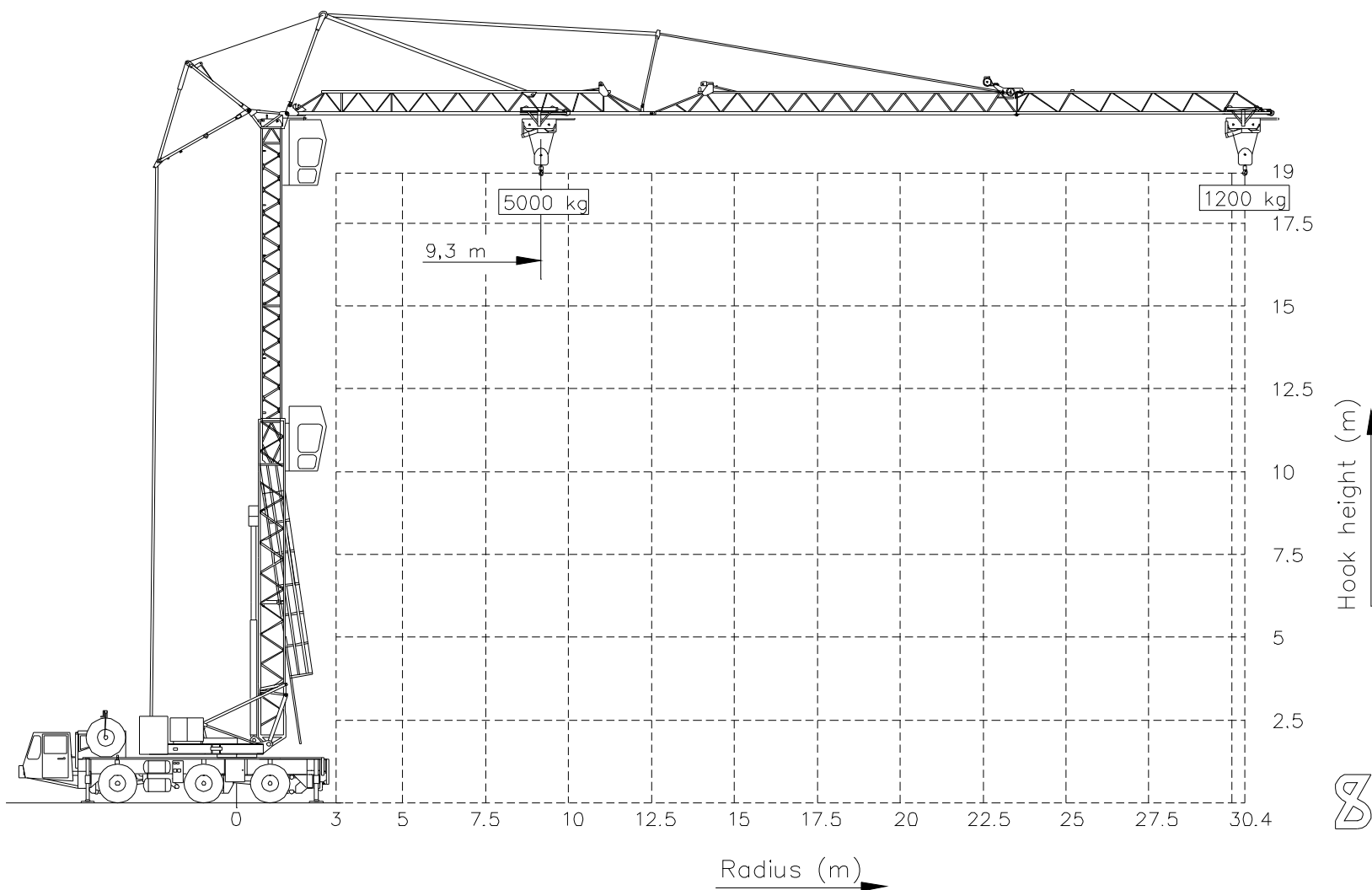


**SPIERINGS  
KRANEN**

Merwedestraat 15  
5347 KZ Oss NL  
Tel. 0412-626964  
Fax 0412-645299



## HOISTING SPECIFICATIONS SPIERINGS FOLDING CRANE SK345-AT3

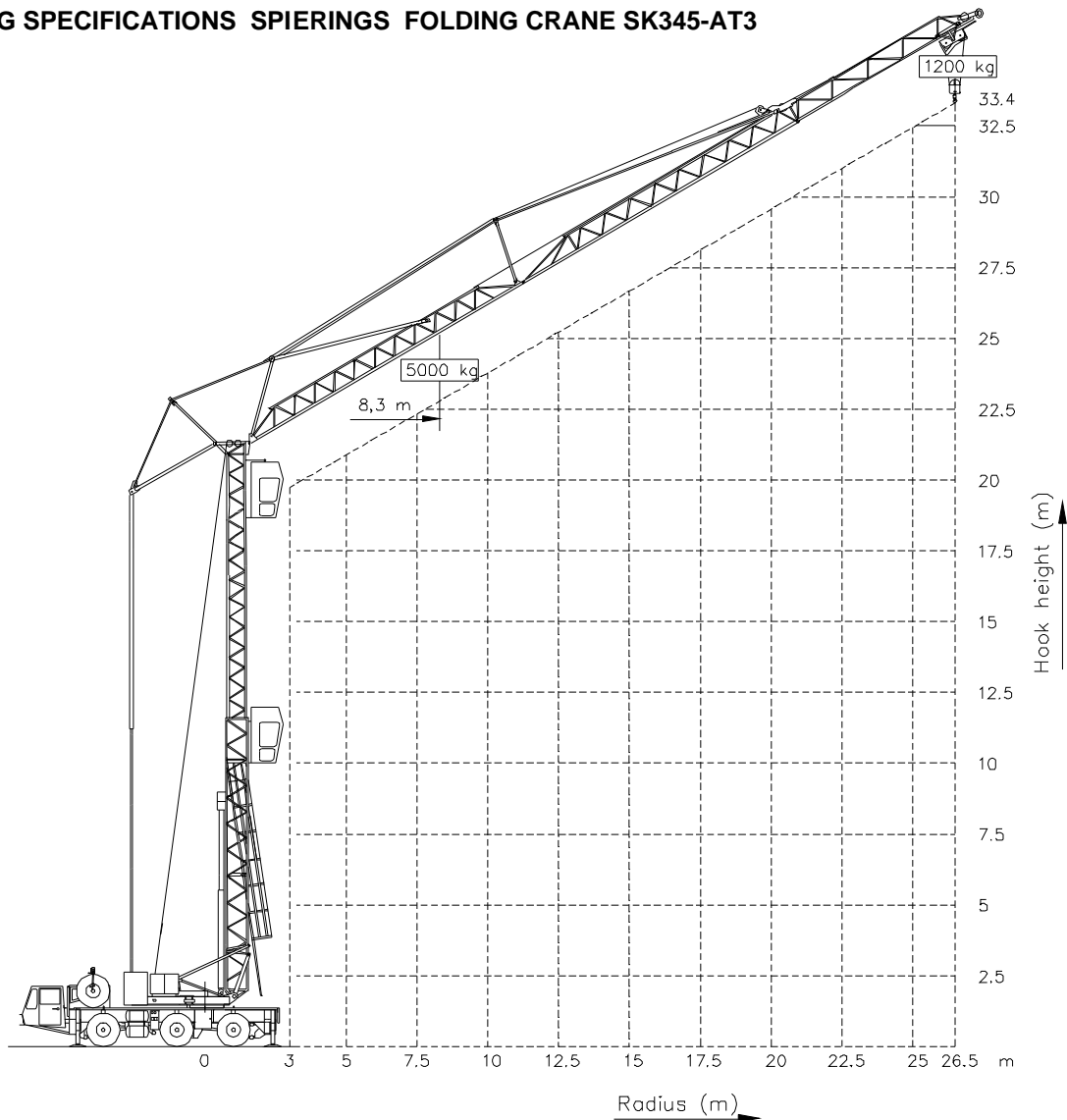


**SPIERINGS  
KRANEN**

Merwedestraat 15  
5347 KZ Oss NL  
Tel. 0412-626964  
Fax 0412-645299



## HOISTING SPECIFICATIONS SPIERINGS FOLDING CRANE SK345-AT3

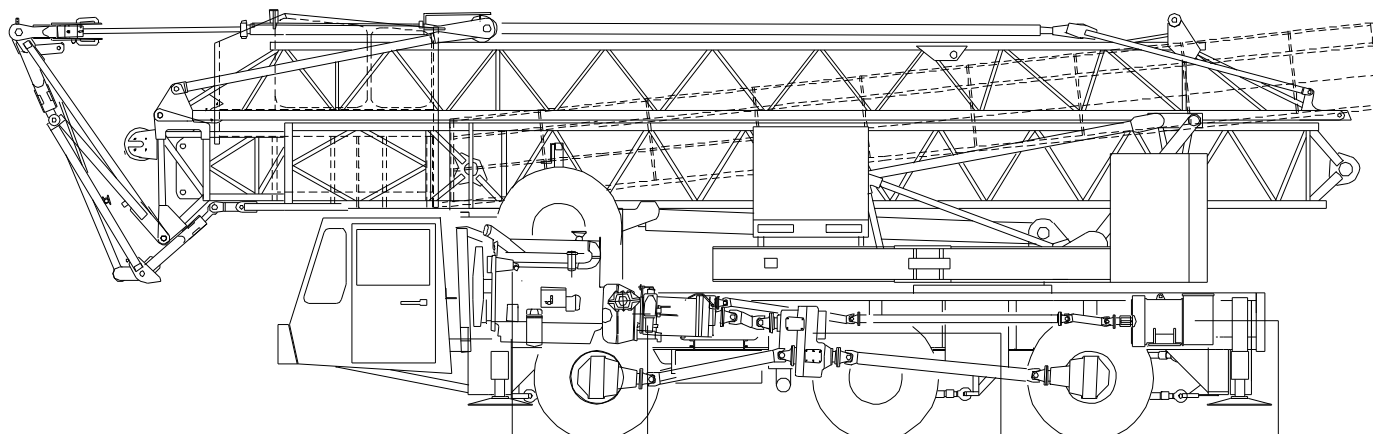


**SPIERINGS  
KRANEN**

Merwedestraat 15  
5347 KZ Oss NL  
Tel. 0412-626964  
Fax 0412-645299



## Drive train SPIERINGS SK345-AT3



Engine:  
DAF DHS 825 L (8,25 ltr.)  
Power: 195 Kw (2400 rpm)  
Torque: 932 Nm (1500 rpm)

Axle 1

Gear box ZF S6-90  
Manually operated with air power ass.  
+ dry plate clutch

Axle 2

Axle 3

Transfer case:  
STEYR VG1600/300  
Road gear  $i=1:0,89$   
Off-road gear  $i=1:1,54$

Generator:  
LSA 44.1M3 - 75kVA

Axles 1 and 3 : O&K (/FAUN) axles with differential and end reduction

Axle 2 : O&K (/FAUN) axle, not driven

Suspension: hydro-pneumatic on all axles, stroke ram 160 mm

Max. speed carrier : 80 km/h

Min speed carrier (diesel engine 1000 rpm) : 1,7 km/h

## SPIERINGS FOLDING CRANE Type SK345-AT3



Merwedestraat 15  
5347 KZ Oss NL  
Tel. 0412-626964  
Fax 0412-645299