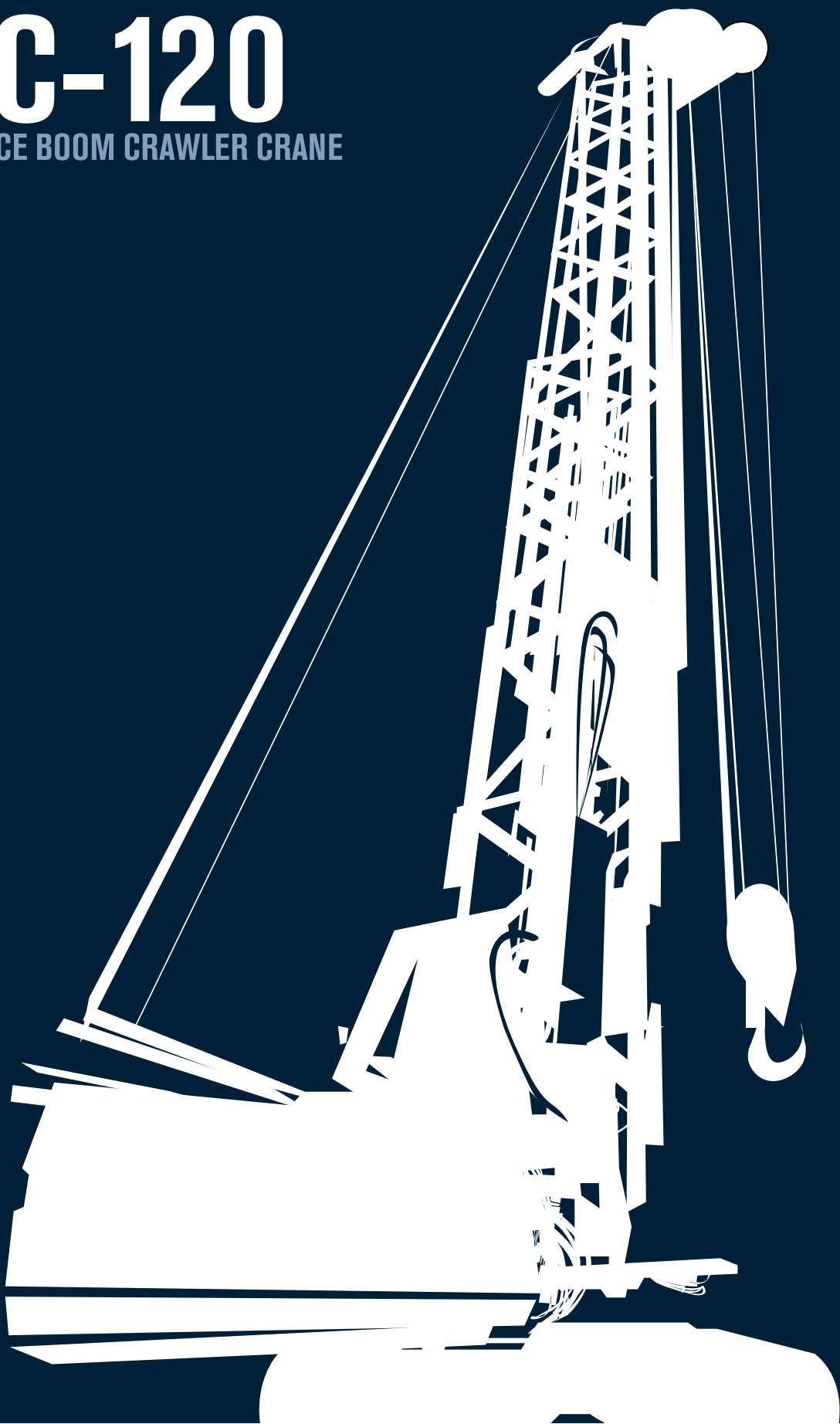




SC-120

LATTICE BOOM CRAWLER CRANE





SC-120

LATTICE BOOM CRAWLER CRANE

A new model

The SC-120 crawler mounted crane has been designed meeting the advantage of being dedicated and multifunctional at the same time. It can be used to work with hydromills, crane attachments, vibrators, hydraulic and mechanical grabs, etc.

Main features:

- Multi element lattice boom
- Boom hoist by multiple reeving winch
- Engine CAT 18
- Comfortable operator cab
- Mechanical and hydraulic fittings for casing oscillator
- Removable and self-assembling tracks
- Controlled descent or free fall type winches
- Multi element self-lifting counterweight
- Wide range of optionals

Notes

- 1 - The rated loads are based on machine at firm level ground and without travelling.
- 2 - The rated loads are in metric tons valid for 360° degree swing.
- 3 - The rated loads are calculated to comply DIN 15018, DIN 15019 and do not exceed 75% of tipping load.
- 4 - The rated loads include the weight of all lifting attachments.
- 5 - The users derate or limit the lifted loads to allow for adverse conditions such as: soft or uneven ground, out of level, wind, side loads, pendulum action, jerking or sudden stopping of load, inexperience of personnel, and possible travelling with a load.
- 6 - The max line pull for crane operation is only approximate. It must be referred to used rope with end terminations, in accordance to CEE directive.
- 7 - Lifting chart values must be applied in complete optimum boom assembly and head with plastic sheaves.

Engine		
Make and model		CATERPILLAR C18
Rated Power SAE J 1995	kW	522 @ 1800 rpm
Cylinders	n°	6 - in line
Power supply		Turbocharged aftercooler air toair
Hydraulic System		
Max flow	l/min (MPa)	2 X 475 (30)
Controls		proportional
Winches free fall		
Line pull	kN	350
Rope diameter	mm	36
Winches controlled descent		
Line pull	kN	350
Rope diameter	mm	36
Turret		
Max width	mm	3500 (4350 Counterweight)
Rotation speed	rpm	3
Undercarriage		
Type		Fixed gauge / removable sides
Shoes width	mm	900 / 1000
Center of wheels	mm	6000
Max track length	mm	7172
Max travelling speed	km/h	2.0
Tracks removable		
General Features		
Tailswing	mm	5750
Max transport width	mm	3500
Max transport height	mm	3560
Boom		
Tubular boom	mm	1520 x 1520
Weights		
Base machine (w/o sides count.)	t	71
In working conditions	t	130
Counterweight	t	30
The shown weights may vary in different outfittings		



SC-120

LATTICE BOOM CRAWLER CRANE

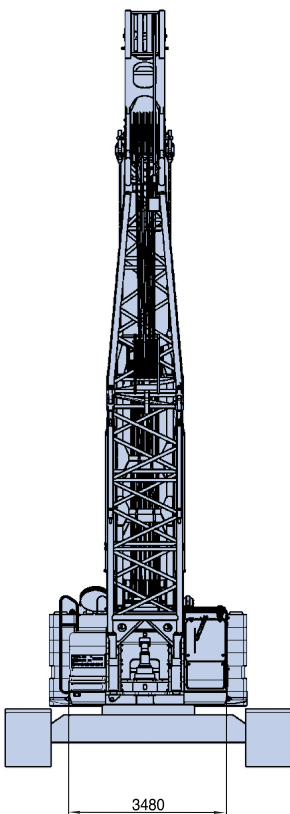
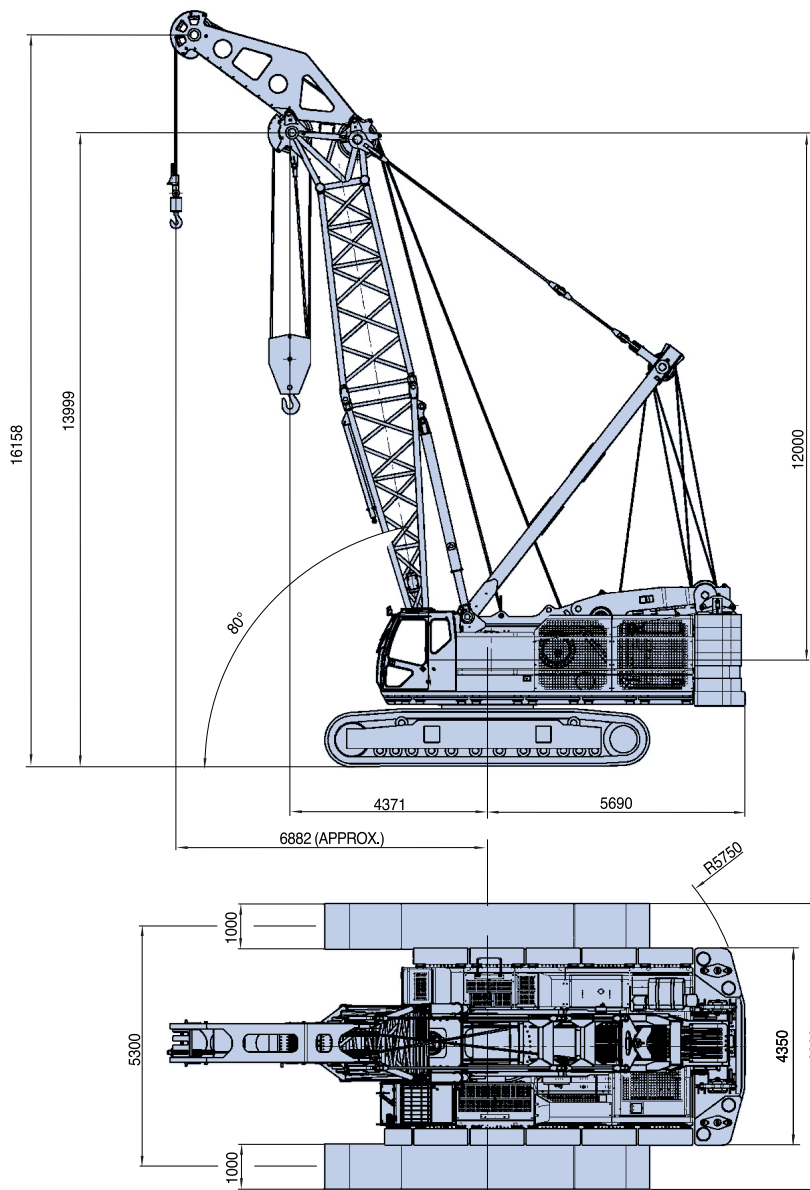
Winch 300 kN Crane SM120 (without Jib)					
Boom Length (m)					
Boom	12m	15m	18m	21m	24m
Radius (m)	Capacity (t)				
3.7	120.00	—	—	—	—
4.0	120.00	107.04	—	—	—
4.5	113.21	106.73	100.25	—	—
5.0	101.73	100.45	100.25	93.30	—
5.5	91.68	90.61	90.45	—	72.44
6.0	82.55	81.58	81.42	81.02	72.44
6.5	75.00	74.13	73.97	—	—
7.0	68.67	67.85	67.70	67.50	65.66
7.5	63.26	62.55	62.39	—	60.45
8.0	58.62	58.01	57.85	57.65	56.02
8.5	54.48	54.03	53.87	—	52.14
9.0	50.20	50.51	50.35	50.15	48.72
9.5	46.37	46.83	46.83	—	45.71
10.0	42.75	43.36	43.31	43.16	43.01
10.5	39.43	40.35	40.38	—	40.05
11.0	36.47	37.70	37.65	37.50	37.39
11.5	33.72	35.40	35.23	—	—
12.0	29.13	33.31	33.21	33.06	32.95
12.5	24.43	31.40	31.22	—	—
13.0	19.28	29.74	29.64	29.48	29.38
13.5	—	28.14	—	—	—
14.0	—	26.78	26.73	26.58	26.42
14.5	—	24.98	—	25.02	—
15.0	—	22.18	24.23	24.13	23.97
15.5	—	18.92	—	22.92	—
16.0	—	—	22.14	22.04	21.88
16.5	—	—	—	20.98	—
17.0	—	—	20.35	20.20	19.94
17.5	—	—	—	19.36	—
18.0	—	—	16.98	18.67	18.52
18.5	—	—	14.54	17.63	—
19.0	—	—	—	17.29	17.02
19.5	—	—	—	16.45	—
20.0	—	—	—	15.96	15.96
20.5	—	—	—	14.36	—
21.0	—	—	—	12.95	14.64
21.5	—	—	—	—	—
22.0	—	—	—	—	13.72
22.5	—	—	—	—	—
23.0	—	—	—	—	12.90
23.5	—	—	—	—	—
24.0	—	—	—	—	10.20
24.5	—	—	—	—	—
25.0	—	—	—	—	—
25.5	—	—	—	—	—
26.0	—	—	—	—	—
26.5	—	—	—	—	—
27.0	—	—	—	—	—
27.5	—	—	—	—	—
28.0	—	—	—	—	—
28.5	—	—	—	—	—
29.0	—	—	—	—	—
	—	—	—	—	—
Line Parts	8	8	—	6	4
	12	15	—	21	24
	Boom Length (m)				

Winch 300 kN Crane SM120 (without Jib)					
Boom Length (m)					
Boom	27m	30m	33m	36m	39m
Radius (m)	Capacity (t)				
6.0	66.24	—	—	—	—
6.5	—	65.98	61.42	—	—
7.0	65.44	65.25	60.91	37.70	—
7.5	—	—	—	—	37.70
8.0	55.94	55.61	55.31	37.70	37.70
8.5	—	—	—	—	—
9.0	48.64	48.36	48.06	37.70	37.70
9.5	—	—	—	—	—
10.0	42.60	42.55	42.48	37.70	37.70
10.5	—	—	—	—	—
11.0	37.56	37.14	36.88	36.45	36.38
11.5	—	—	—	—	—
12.0	32.84	32.70	32.52	32.44	32.28
12.5	31.02	—	—	—	—
13.0	29.29	29.13	28.96	28.79	28.56
13.5	27.89	—	—	—	—
14.0	26.54	26.17	25.94	25.87	25.78
14.5	25.11	—	—	—	—
15.0	23.74	23.67	23.59	23.49	23.40
15.5	—	—	—	—	—
16.0	21.67	21.58	21.49	21.38	21.29
16.5	—	—	—	—	—
17.0	19.81	19.79	19.75	19.65	19.57
17.5	—	—	—	—	—
18.0	18.36	18.21	18.18	18.12	18.00
18.5	—	—	—	—	—
19.0	16.91	16.83	16.72	16.63	16.51
19.5	—	—	—	—	—
20.0	15.77	15.66	15.55	15.47	15.29
20.5	—	—	—	—	—
21.0	14.44	14.40	14.31	14.22	14.14
21.5	—	—	—	—	—
22.0	13.70	13.57	13.48	13.39	13.18
22.5	—	—	—	—	—
23.0	12.71	12.67	12.60	12.52	—
23.5	—	—	—	—	—
24.0	11.69	11.67	11.60	11.52	11.15
24.5	—	—	—	—	—
25.0	11.02	11.00	10.97	—	—
25.5	—	—	—	—	—
26.0	9.84	9.82	9.79	9.73	9.64
26.5	—	—	—	—	—
27.0	—	9.32	—	—	—
28.0	—	8.72	8.70	8.63	8.30
29.0	—	7.70	—	—	—
30.0	—	—	7.54	7.50	7.01
31.0	—	—	6.70	—	—
32.0	—	—	—	6.45	6.10
33.0	—	—	—	6.02	—
34.0	—	—	—	5.24	5.11
35.0	—	—	—	—	—
36.0	—	—	—	—	4.47
37.0	—	—	—	—	3.73
Line Parts	4	4	4	2	2
	27	30	33	36	39
	Boom Length (m)				

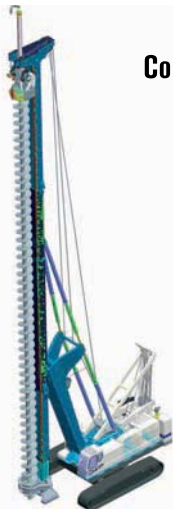


SC-120

LATTICE BOOM CRAWLER CRANE



Special Applications



Continuous Flight Auger



Hydraulic Grab

Figures

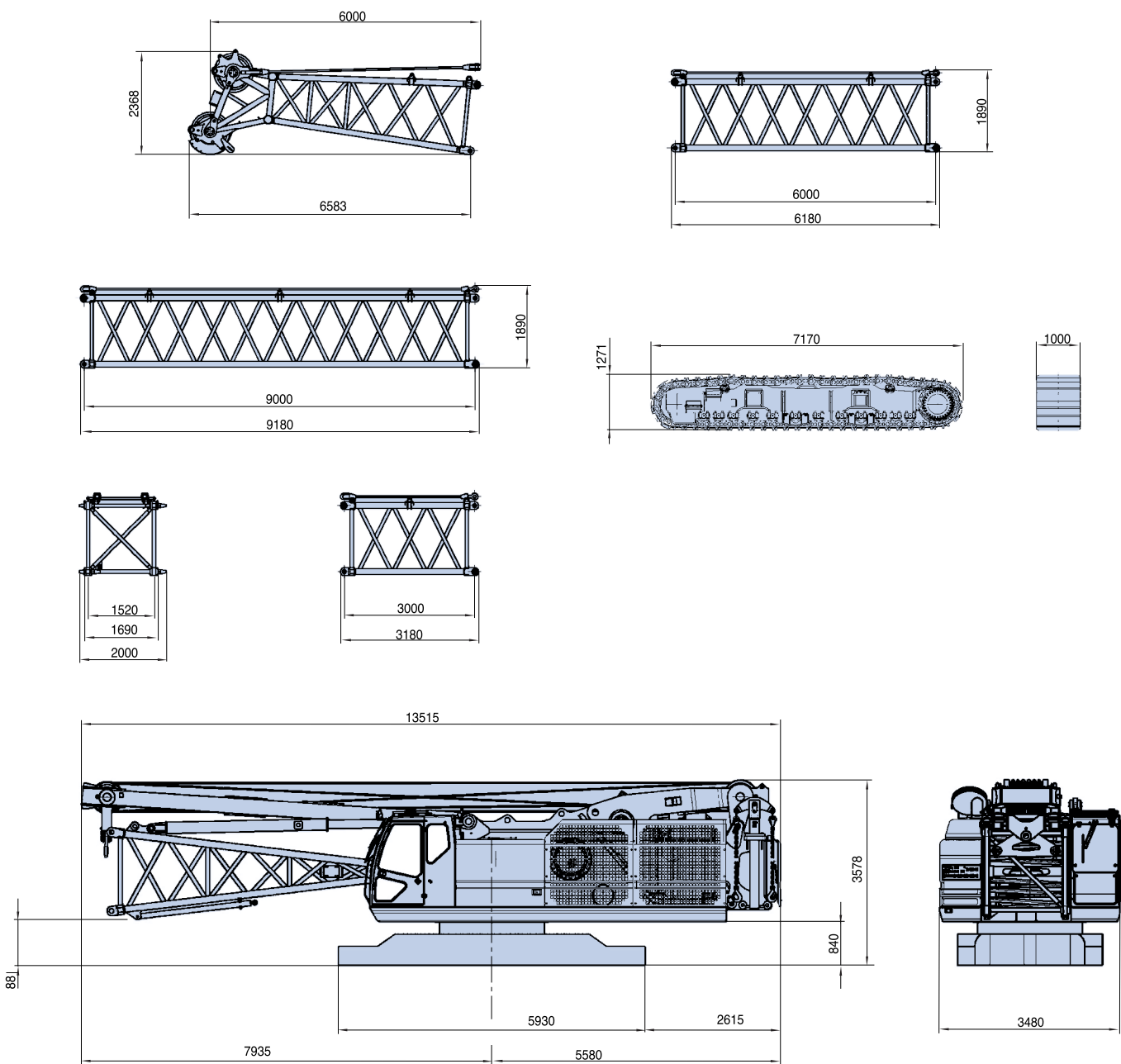
- 1 -Self counterweight
- 2 -Self assembling track
- 3 -Transport configuration





SC-120

DIMENSIONS & WEIGHTS









SOILMEC distributes machinery and structures all over the world, supported by SOILMEC subsidiary companies and representative offices as:

SOILMEC LTD - U.K.

SOILMEC MISR S.A.E. Co. - Egypt

SOILMEC (H.K.) Limited - Hong Kong

SOILMEC JAPAN CO LTD - Japan

SOILMEC S.P.A. - Beijing Repr. Office - P.R. China

SOILMEC FAR EAST PTE.LTD - Singapore

SOILMEC EMIRATES - U.A.E.

SOILMEC GULF - U.A.E.

SOILMEC FRANCE S.A.S. - France

CERTIFIED QUALITY SYSTEM

In 1990 Soilmec was awarded with the certification of its Quality System complying with ISO 9001/UNI 29001 standards.



SOILMEC S.p.A.

Drilling and Foundation Equipment

5819, via Dismano

47023 Cesena (FC) - Italy

tel. +39-0547-319111

fax +39-0547-318548

[http:// www.soilmec.it](http://www.soilmec.it)

e-mail: soilmec@soilmec.it