



**Multifunktional  
self-driven lifting device**

## SL 580 Maxi

Indoor lift for heavy  
windows and panes

# Lifts and handles elements up to 580 kg

The SL 580 Maxi is an agile and stable lifting device – excellent for easy lifting and moving of the heaviest window panes and sheets of glass.

- Two vacuum circuits with two pumps
- Handy og compact
- Multifunktional
- Self-propelled
- Accurate to the millimeter
- Labour-saving
- Improves work environment
- Tried-and-tested Danish quality

*The lifting capacity and precise movements of the Smartlift make the machine ideal for installation of e.g. heavy fire doors.*



*The SL 580 Maxi is increasingly used in industry for heavy lifting jobs.*



*Windows are kept securely in place throughout the installation process.*



N.A. Christensensvej 39  
DK - 7900 Nykøbing Mors  
Tlf.: +45 97 72 29 11  
E-mail: [smart@smartlift.dk](mailto:smart@smartlift.dk)  
[www.smartlift.dk](http://www.smartlift.dk)

**Smart Lift**  
DENMARK



SL 580 Maxi



The lifting device has a multifunctional swivel head.



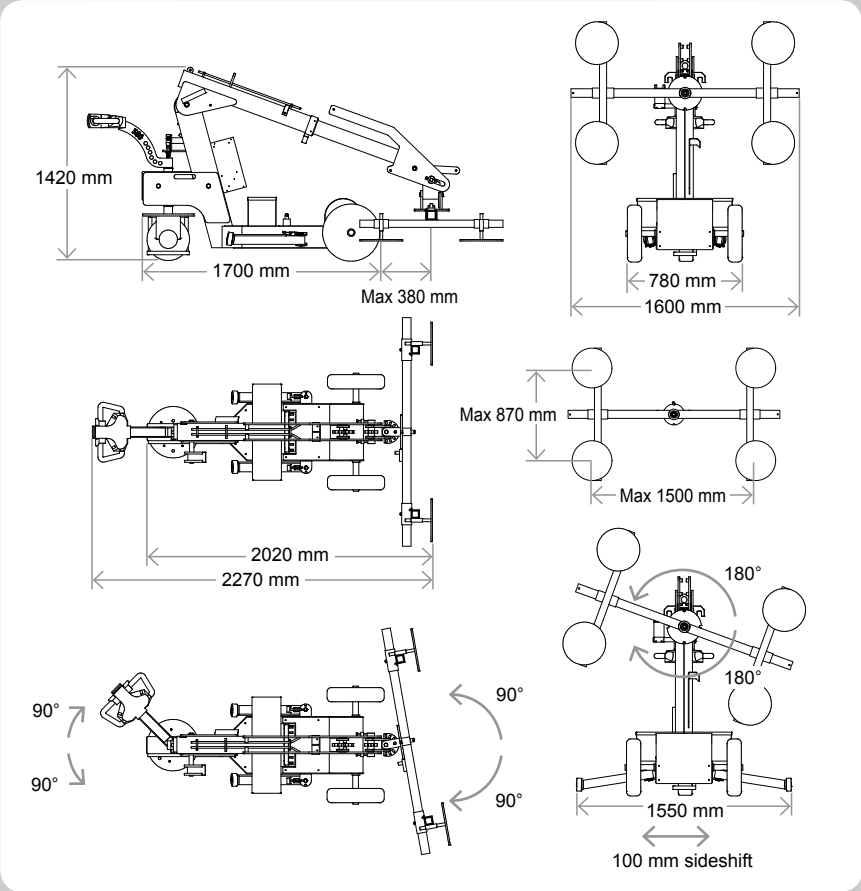
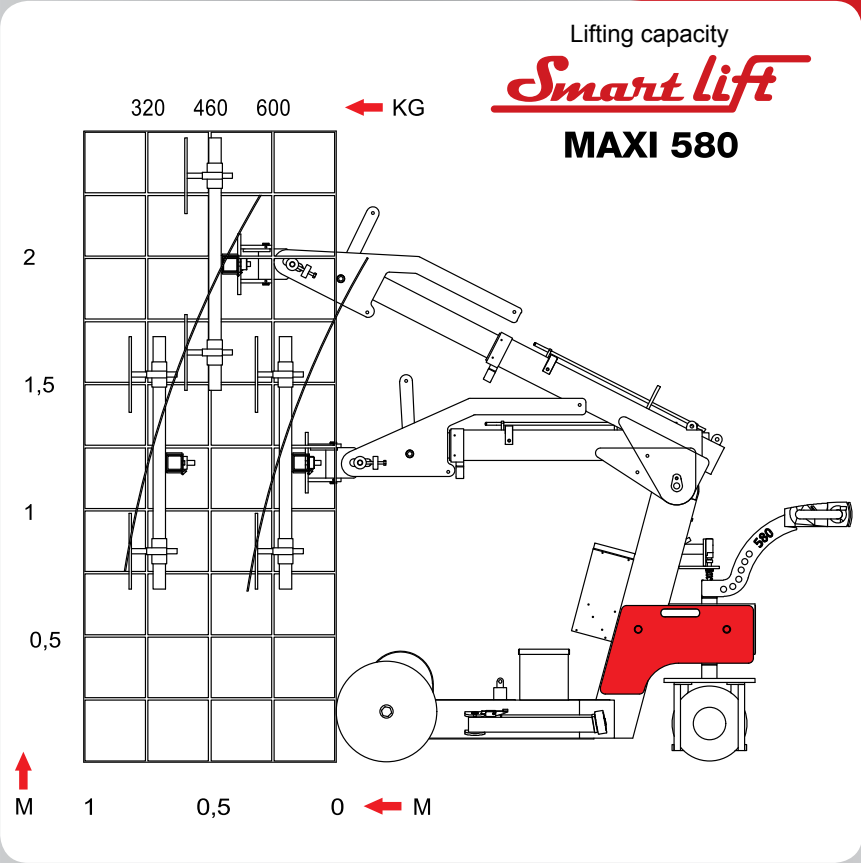
The SL 380 can be shifted sideways up to 100 mm for precision adjustment during the window installation process.



The Smartlift is easily transported in a van or on a trailer

Technical data

| Description               | Value                 |
|---------------------------|-----------------------|
| Weight                    | 697 kg                |
| Height                    | 1420 mm               |
| Width (min)               | 780 mm                |
| Length(min)               | 2020 mm               |
| Extension of arm          | 500 mm                |
| Tip from horizontal       | 35° back/100° forward |
| Sideshift                 | 100 mm                |
| Vacuum system             | 2 circuits            |
| Chargingvoltage           | 230 volt              |
| Integrated charger        | Cetek XT 14000        |
| Chargingtime              | Approx 8 hours        |
| Battery (2 x 12v) 24 volt | 2 x 90 A              |
| Runningperiod             | Approx 30 hours       |
| Front-wheel drive         | 1000 Watt             |
| Suction pads              | 4 unit Ø 400 mm       |



N.A. Christensensvej 39  
DK - 7900 Nykøbing Mors  
Tlf.: +45 97 72 29 11  
E-mail: smart@smartlift.dk  
www.smartlift.dk

