



View thousands of Crane Specifications on [FreeCraneSpecs.com](http://FreeCraneSpecs.com)

# SKYLIFT

## **PATRIOT★40/50**



**Ph. 440-960-2100**  
**Fax 440-960-2104**

**[www.skyliftus.com](http://www.skyliftus.com)**





**State of the Art  
Belt Pack Radio Controls**



**Setting pole**

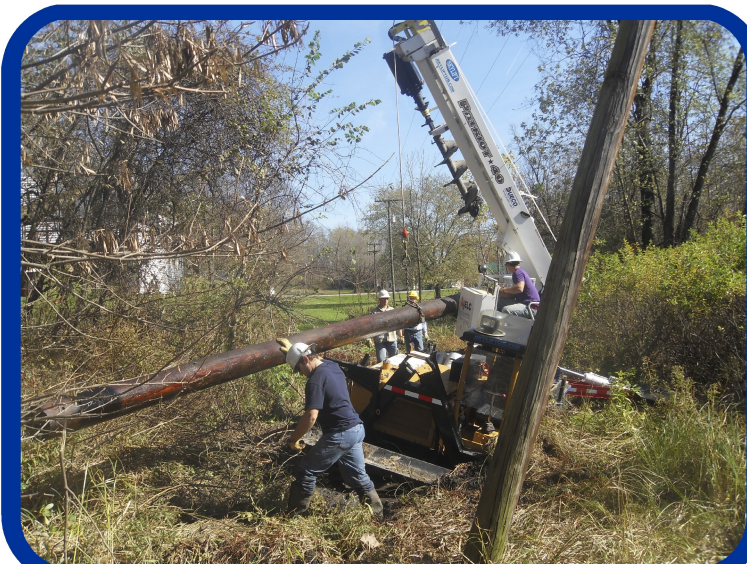


**Transporting pole**

- Low ground pressure
- Ultra light design
- Tow behind line truck
- Low operating costs



**Pin on Bucket with  
Can Handler!**







***Transporting pole***



***Loading pole***



***Setting pole***

- Low ground pressure
- Ultra light design
- Tow behind line truck
- Low operating costs







## **PATRIOT★40/50 TECHNICAL SPECIFICATIONS**

### **CRAWLER CARRIER**

### **ENGINE**

### **SPEED**

### **WIDTH**

### **GROUND PRESSURE**

### **DIGGER DERRICK**

### **HEIGHT**

### **WEIGHT**

### **LIFT CAPACITY**

### **SHEAVE HEIGHT**

### **BOOM INSULATION**

### **BOOM EXTENSION**

### **WINCH**

### **BOOM ROTATION**

### **CONTROLS**

### **AUGER**

### **AUGER TORQUE**

**Morooka MST-600VD**

**76 H.P. Diesel**

**7.5 M.P.H.**

**77"**

**5 PSI**

**SKYLIFT 40/50**

**9 FT**

**15,880 / 18,680 LBS**

**6000 LB**

**40/50 FT**

**46 KV Category C**

**Full Hydraulic**

**Planetary**

**Continuous**

**Full Pressure AT Command Console**

**18" Bullet Tooth**

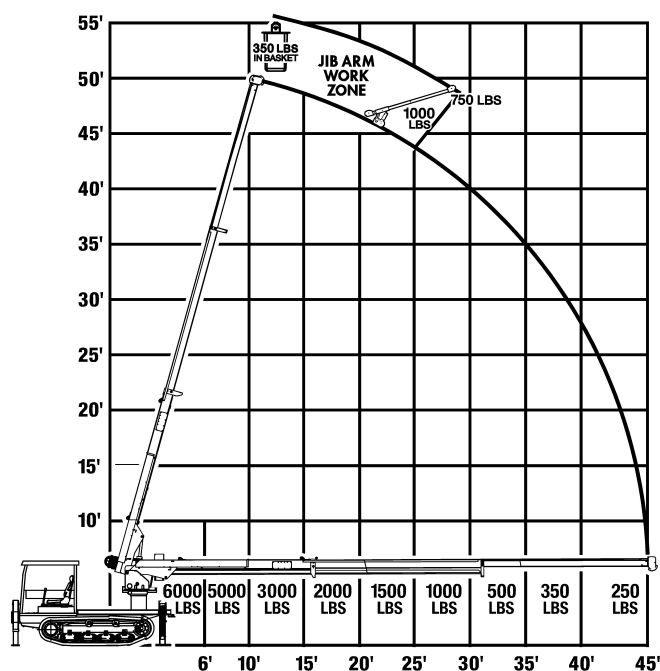
**5,800/10,500 FT LBS.**

### **OPTIONAL EQUIPMENT**

- CAN HANDLER - JIB / WINCH
- HYDRAULIC HOSE REEL FOR TOOLS
- ELECTRIC OR HYDRAULIC RECOVERY WINCH
- HYDRAULIC OVERLOAD PROTECTION
- BELTPACK RADIO REMOTE FOR BOOM CONTROLS W/ START STOP
- HYDRAULIC POLE GUIDES
- HYDRAULIC JIB / 8 FT ADDITIONAL BOOM
- BOOM OVERSTOW SWITCH
- TWO SINGLE MAN BASKETS WITH DUAL BUCKET HANGER.
- HYDRAULIC FRONT BLADE
- HIGH / LOW TWO SPEED THROTTLE
- DECK BUCKET STORAGE PLATFORM
- TRAILER / 18,000 LB G.V.W.R. TANDEM AXEL

### **PATRIOT 50 WORK LOAD CHART**

Full 360° Work Zone



3000 Leavitt Rd. Lorain, Ohio 44052

Ph.440-960-2100 Fax 440-960-2104