



View thousands of Crane Specifications on FreeCraneSpecs.com

SKYJACK™



VR-1056D | 10,000 lb. Capacity, 56 ft. Lifting Height



VARIABLE REACH SERIES
Telescopic MATERIAL HANDLER



VARIABLE REACH SERIES VR-1056D

DIMENSIONS

Wheelbase.....	11'1"	3.37 m
Overall Width.....	8'6"	2.59 m
Overall Height (stowed)	8'2"	2.48 m
Overall Length (less forks)	22'6"	6.86 m
Ground Clearance	16"	41 cm
Operating Weight	31,494 lb	14,315 kg
Turning Radius (outside).....	12'9"	3.89 m
Frame Leveling (degrees).....	+/- 10	

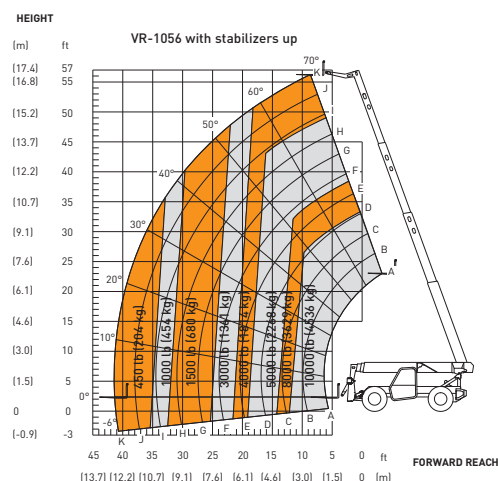
SPECIFICATIONS

Engine	Cummins Tier 3 QSB3.3 Turbocharged Diesel
HP @ rpm	110 horsepower @ 2400 rpm
Transmission.....	Dana powershift, 3 speeds forward and reverse
Top Speed.....	18 mph (29 km/h)
Axles.....	Dana steerable outboard planetary
Brakes.....	Service - 4 wheel wet disc
	Parking - SAHR on front axle
Tire	14 x 24 16PR grip lug
Steering.....	3 mode (2 wheel, 4 wheel, crab)
Boom.....	Maximum lift height - 56'3" (17.14 m)
	Maximum forward reach 41'5" (12.65 m)
	Carriage rollback - 23 degrees (boom lowered)
	Carriage forward tilt - 90 degrees (boom elevated)
General.....	Fuel tank capacity - 35 US gal. (133L)
	Hydraulic tank capacity - 35 US gal. (133L)
	12 volt - 60 amp. alternator

STANDARD EQUIPMENT

- Frame-mounted stabilizers
- EZ-Lock rear axle stabilization system
- Standard quick attach carriage mount system
- Single function auxiliary hydraulics
- Dual lift cylinders with cushioning effect
- See through open "A" frame high pivot boom mount design
- ROPS/FOPS certified cab with see through FOPS guard
- Rear window w/wiper
- Side window
- Adjustable vinyl seat with seat belt
- Ergonomic joystick console with armrest and cup holder
- Single multifunction pilot operated joystick control
- Instrumentation: hourmeter and fuel gauge, indicator lights for transmission oil temperature, battery condition, engine coolant pressure and engine oil pressure
- Park brake test button
- 12V DC electrical system with 12V power outlet in cab
- Lockable in cab storage box
- Mid-mount in line engine design
- Lockable sliding engine cover allows access with boom fully stowed
- Engine grid heater
- Dual element air cleaner with flow restriction indicator
- 40 gallon steel hydraulic tank with lockable cap
- 35 gallon steel fuel tank with lockable cap
- Horn and backup alarm
- Mirrors, right and left side
- Remote grease fittings for axle trunnion mount lubrication
- Easy to remove steel component and access covers
- Operator/Maintenance and Parts manuals
- 12 months/2000 hour warranty (4 years on structure)

CAPACITY CHART



OPTIONAL EQUIPMENT

- Air conditioning
- All-weather cab with wipers, heat and defrost, face fan, tinted glass, sliding side window, and suspension seat
- Fenders
- Full suspension seat
- Vandal protection
- Pintle hitch
- Rotating beacon
- Road lighting package features one headlight, one rear and two front work lights, boom lights, and turn signals
- Work and boom lighting package with two front and rear work lights, and two boom lights
- Foam filled tires
- Hard surface tires
- Solid flex solid tires

ATTACHMENTS

- Buckets
- Drywall handler
- Side-tilt carriages
- Swing carriages
- Truss booms
- Various width carriages

Note: Materials and specifications are subject to change without notice.



55 Campbell Rd. Guelph, ON Canada N1H 1B9
 Sales Inquiries: 1-877-755-4387 (1-877-SJLIFTS)
 Main Switchboard: 1-800-265-2738
 Phone: 519-837-0888
 Fax: 519-837-8104
 Email: skyjack@skyjack.com

IMPORTANT

- Machine design complies with ANSI/ITSDF B56.6-2005 stability requirements for rough terrain forklifts.
- Rated capacities shown are with machine on firm level ground, steered straight with frame level and on properly inflated tires
- Read boom angle and boom extension, then determine allowable load from chart.
- Do not exceed rated loads as dangerous and unstable machine conditions will result.
- Always travel with boom retracted in the lowest possible position.