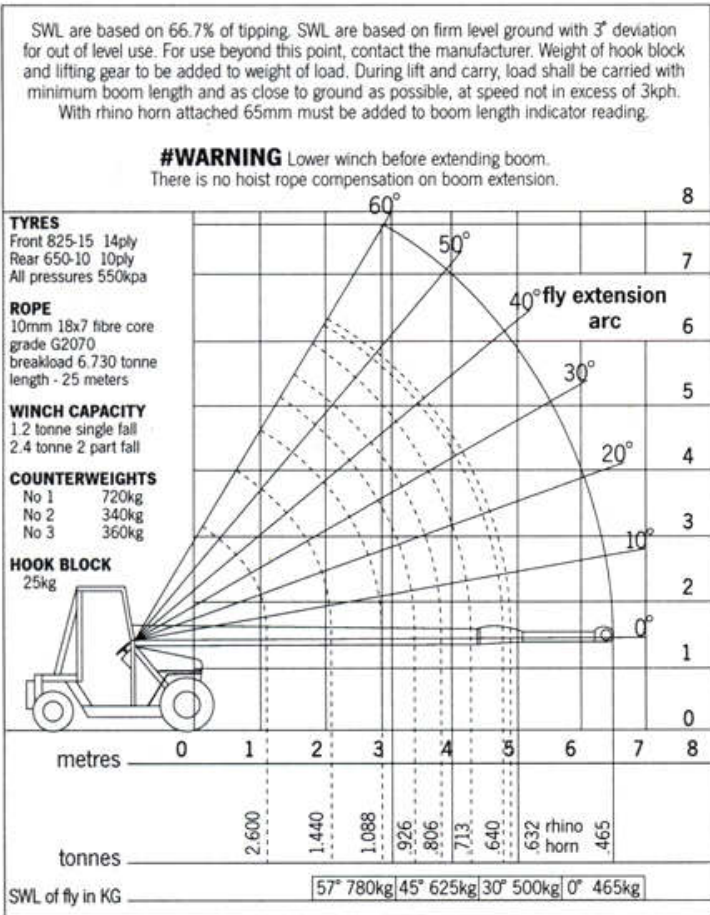




SKAT 2.6 TONNE MINI CRANE SPECIFICATIONS

SAFE WORKING LOADS (SWL)



JIB

Two (2) stage hydraulic

Engine

Perkins 104.22KR water cooled diesel
50 HP at 2800 rpm

TYRES

Front - 8.25-15 Industrial Cheng Shin 14 ply
Rear - 6.50-10 Industrial Cheng Shin 10 ply

HYDRAULICS

Danfoss hydraulic motors at each front wheel
Infinite variable speed control

SPEED

Maximum road speed 18 KPH

TURNING RADIUS

2.6 metres

SAFETY DEVICES

Winch	overcentre valve
Boom lifting	overcentre valve
Boom extension	overcentre valve
Boom length indicator	
Mechanical boom angle indicator	
Winch overlimit warning device	

OPTIONS

All options available as factory or field fit and include:

- Winch
- 2 metre fly
- Rhino horn
- Pallet lifter
- Road registration kit

WARRANTY

1200 hours or 12 months, whichever occurs first

DIMENSIONS

Length	5.15 metres
Width	1.87 metres
Height boom in horizontal	1.6 metres
Height to top of cab	1.975 metres
Gross weight	3.8 tonnes
Winch	0.1502
Counterweights (3)	1.42 tonnes

*Specifications subject to change without prior notice

DIMENSIONS AND POINT LOADS

