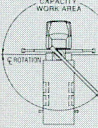





4700 Series

STINGER 4792

4792 Capacity and Range Chart:

OPERATING RATING IN T	LOAD RATINGS IN LBS. WITH OUTRIGGERS EXTENDED										AREA OF OPERATION 		
	LOADED BOOM ANGLE		BOOM LENGTH										
	29 FT		44 FT		57 FT		71 FT		84 FT			92 FT	
	5	78	47000										
	8	71	36800	78	20300								
	10	67	30900	75	20300	79	18400						
	12	62	26100	73	20300	77	17400						
	14	58	21900	70	19400	75	16800	78	14600				
	16	53	18800	67	17300	73	15900	77	13800	79		12300	
	20	41	14200	61	13900	68	13400	73	12300	76		10900	78
25	21	10400	53	10900	63	10600	69	10400	73	9800	75	9025	
30			45	8625	57	8625	65	8425	69	8225	71	7425	
35			34	6925	51	6925	60	6925	66	6725	68	6325	
40			19	5225	44	5625	56	5625	62	5625	65	5425	
45					36	4625	50	4625	58	4625	61	4625	
50					26	3725	45	3725	53	3725	57	3725	
55					1	1225	38	3025	49	3025	53	3025	
60							31	2425	44	2425	49	2425	
65							21	2025	39	2025	45	2025	
70									32	1525	40	1525	
75									25	1225	35	1225	
80									14	825	28	825	
<div>NOTE: RATINGS ABOVE THE HEAVY LINE ARE BASED ON STRUCTURAL COMPETENCE AND NOT ON MACHINE STABILITY</div>												<div>DEDUCTIONS FROM RATED LOADS FOR HANDLING DEVICES</div> <div>OVERHAUL BALL: 125 LBS</div> <div>1 SHEAVE LOAD BLOCK: 200 LBS</div> <div>2 SHEAVE LOAD BLOCK: 250 LBS</div> <div>AUX SHEAVE 50 LBS</div>	
<div>700 500 350 300 250 200</div>													
JIB CAPACITIES FOR ALL BOOM LENGTHS													
LOADED BOOM ANGLE		50°	55°	60°	65°	70°	75°	78°	80°				
RETRACTED 26 FT JIB		725	1025	1525	2325	3225	4325	4925	5325				
EXTENDED 44 FT JIB		425	725	1125	1525	2025	2525	2825	3125				

NOTE: RATINGS ABOVE THE HEAVY LINE ARE BASED ON STRUCTURAL COMPETENCE AND NOT ON MACHINE STABILITY

JIB CAPACITIES FOR ALL BOOM LENGTHS

LOADED BOOM ANGLE	50°	55°	60°	65°	70°	75°	78°	80°
RETRACTED 26 FT JIB	725	1025	1525	2325	3225	4325	4925	5325
EXTENDED 44 FT JIB	425	725	1125	1525	2025	2525	2825	3125

NOTE: Please see the 4700 Series 6-page specification for a complete listing of standard features and optional equipment.

4792 Optional Mounting Configurations:




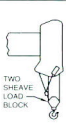

Behind Cab (TC)
Rear Mount (RM)
Pedestal Mount (PM)

(Some standard features for the optional mounting configurations will vary. Please consult your Simon-RO dealer or factory for chassis and mounting requirements.)

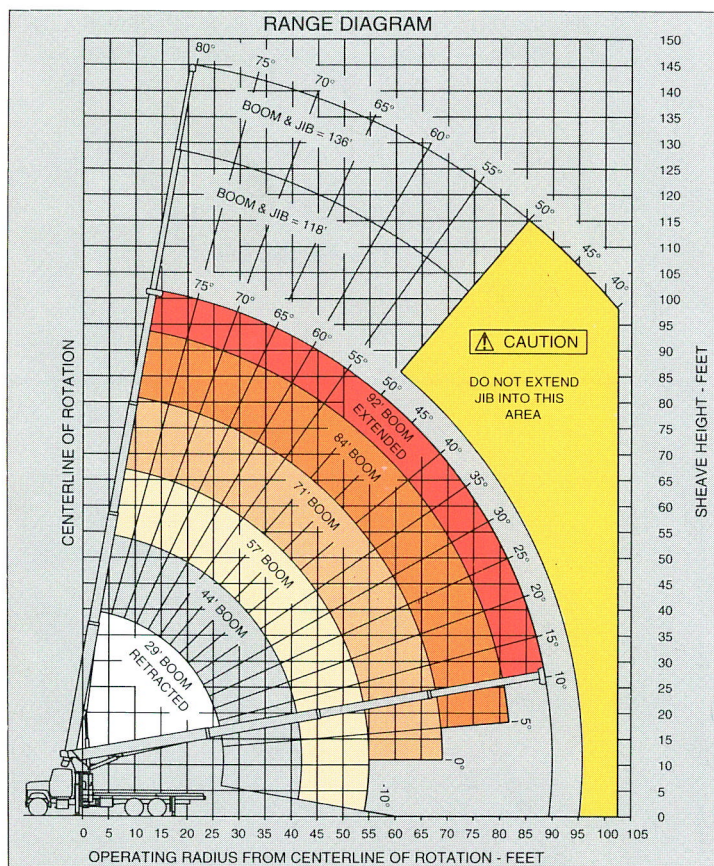
TC 4792 Recommended Chassis Requirements:

Gross Vehicle Weight 52,000 Lbs.
Front Axle Weight Rating 18,000 Lbs.
Rear Axle Weight Rating 34,000 Lbs.
Wheelbase 246 In.
Cab To Axle 168 In.
Transmission Heavy-Duty
(Neutral lock-up required for automatic transmission)
Electrical System Heavy-Duty
Cooling System Heavy-Duty
Frame Section Modulus 26.0 Cubic In.
RBM Per Frame Rail 2,860,000 In./Lbs.

Rope and Reeving:

1 PART LINE	2 PART LINE	3 PART LINE	4 PART LINE	5 PART LINE	CAUTION
					
LOADS UP TO 9,400 LBS STD. CABLE	LOADS UP TO 19,200 LBS STD. CABLE	LOADS UP TO 28,800 LBS STD. CABLE	LOADS UP TO 38,400 LBS STD. CABLE	LOADS UP TO 48,000 LBS STD. CABLE	ANTI-TWO-BLOCK SYSTEM MUST BE IN GOOD OPERATING CONDITION BEFORE OPERATING CRANE. REFER TO OWNER'S MANUAL. KEEP AT LEAST 3 WRAPS OF LOADLINE ON DRUM AT ALL TIMES. USE ONLY 9/16" DIAMETER CABLE WITH 33,600 LB. BREAKING STRENGTH ON THIS MACHINE.
6,720 LBS NOT RESIST CABLE	13,440 LBS NOT RESIST CABLE	20,160 LBS NOT RESIST CABLE	26,880 LBS NOT RESIST CABLE	33,600 LBS NOT RESIST CABLE	

THIS MACHINE COMPLIES WITH OSHA REGULATIONS 1910.180 AND 1926.550 WHERE APPLICABLE AT DATE OF MANUFACTURE

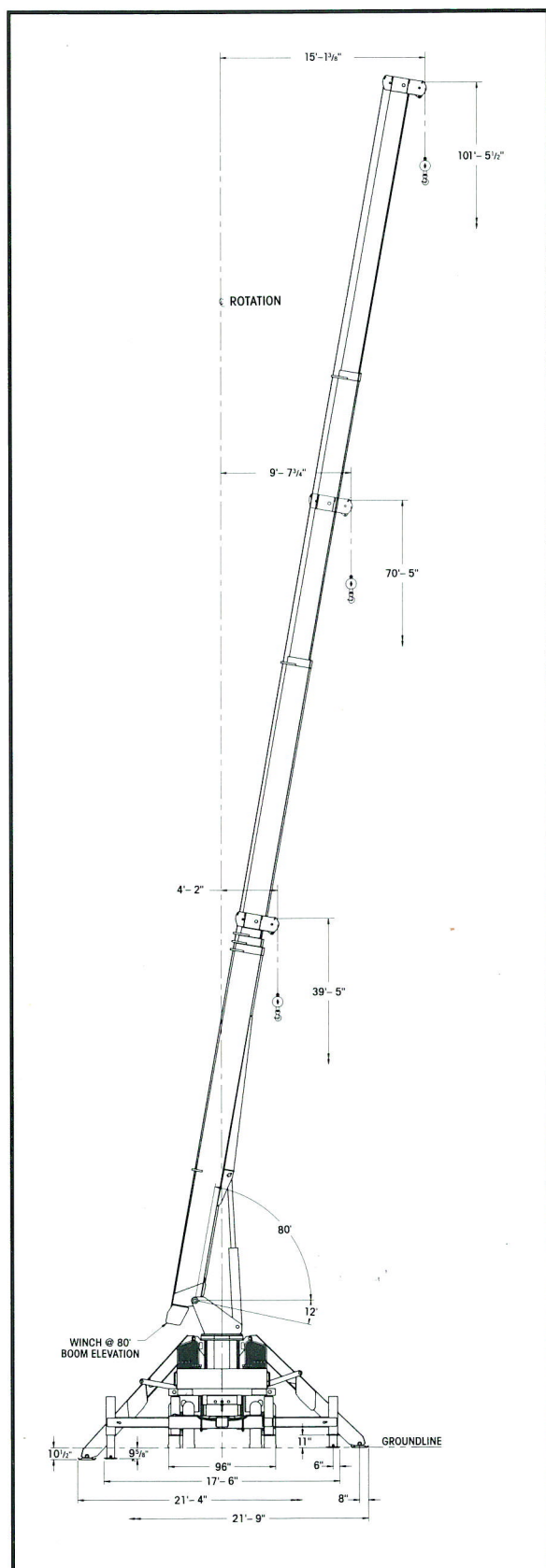


NOTE: Diagrams depict recommended mounting dimensions. The dimensions of optional pedestal and rear mounts will vary. Please consult your dealer or Simon-RO for specifics. Dimensions do not include load deflection.



4700 Series

Dimensional Data:



TC 4792:

Maximum Sheave Height with four-section, 92-foot boom: 101'.

Maximum lifting radius: 80'.

Maximum sheave height with 44' jib: 144'.

Maximum lifting capacity: 47,000 lbs.

TC 4792 Weights:

Standard TC 4792 with 21' subframe and fluids:23,900 lbs.

Optional 21' wood flatbed:1,865 lbs.

Optional 44' two-stage jib:1,340 lbs.

Minimum axle weights with crane installed on truck and in stowed configuration for 85% stability (without jib).

Front Axle12,400 lbs.

Rear Axle28,300 lbs.

Do Not Operate Within 10 Feet Of Overhead Power Lines.

