



## FS95/FS105 FALCON

### The FALCON Series

When you need considerable work height combined with limited or narrow access and maybe even surface pressure restrictions, nothing outperforms the new FALCON series. In a field dominated by traditional boom lifts, the FALCON series sets a new standard for compact, flexible and light aerial work platform design. The new design is not only elegant, but also makes it the most user-friendly and safe unit in its class.

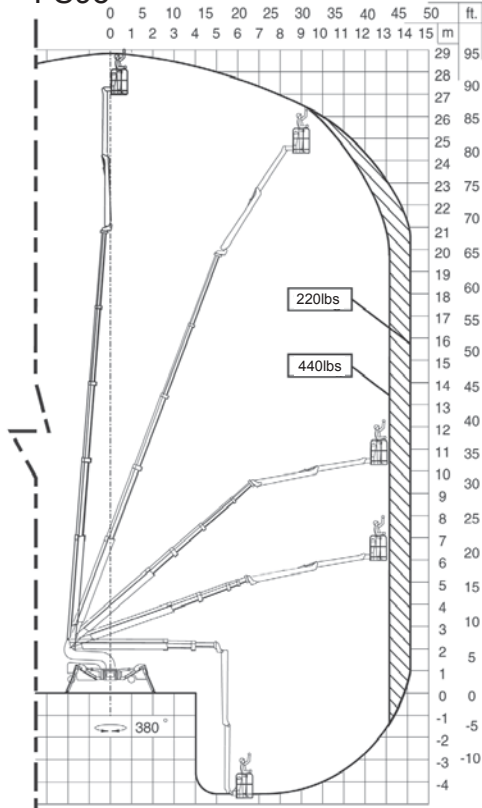
- Available in 9 models from 85ft - 138ft
- Most models available in wheel or track version
- Pass through a single or double door opening
- First and only compact lift with a double jib system
- Automatic outrigger setting (optional)
- Drive from basket (optional in wheel based lifts)
- Automatic, double safety and stability system
- Multi position outrigger system
- Set up on uneven surfaces
- Lightweight, detachable basket
- Self loads onto low bed trailer
- Customized trailer available upon request

We reserve the right to alterations

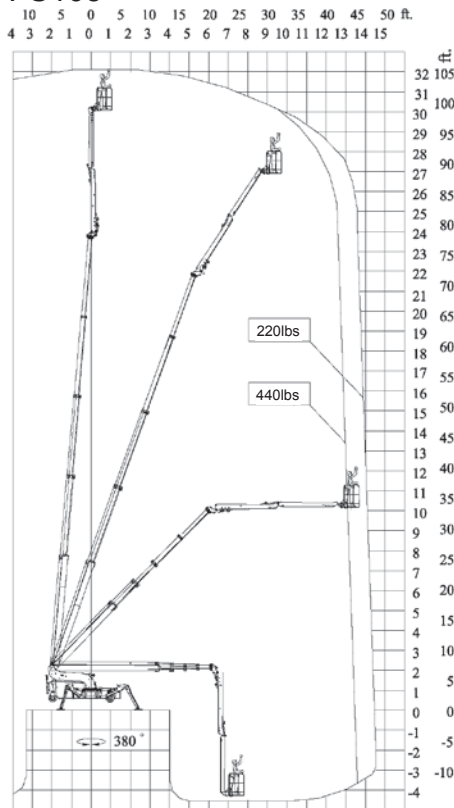
Model	FS95	FS105
Working height	95ft	105ft
Basket height	89ft	99ft
Max outreach	46ft	46ft
Jib arm (2x10ft)	20ft	20ft
Double jib arm	200°	200°
Basket load	440lbs	440lbs
Basket dims	4'7" x 2'7"	4'7" x 2'7"
Basket rotation (opt)	+/-90°	+/-90°
Turret rotation	375°	375°
Height	6ft6in	6ft6in
Length	20ft8in	23ft7in
Width	2ft7in	2ft7in
Gradability (standard)	5°/10%	5°/10%
Footprint (adjustable)	15ft1in	15ft1in
Weight (approx)	8,250lbs	9,130lbs
Max pressure, tires	116psi	114psi
Max pressure, footplate	34psi	41psi
4 battery pack	Standard	Standard
24V DC motor	Standard	Standard
Hatz diesel engine	Option	Option
Honda generator	Option	Option



FS95



FS105



## FS95/FS105 FALCON

### Standard Equipment

- Automatic stability & outreach control
- Computer controlled (can-bus)
- Proportional control of all functions
- Self propelled
- Battery powered with charger
- Double jib arm
- 375° non cont. turret rotation
- Individual setting of outriggers
- Elec. checking of the power system
- Manual pump for emergency lowering
- Self-load onto trucks and trailers
- Adjustable wheel axle
- Min. width of only 2ft7in
- 2 person basket
- Space for tools etc in basket
- Storage room in chassis with lock

### Optional Equipment

- 180° (+/-90°) basket rotation
- 110V AC power to the basket
- Air/water to the basket
- Distance sensor on the basket
- Wind sensor on the basket
- Hatz diesel engine
- Honda gasoline generator
- Extra batteries
- Autosetting/leveling from basket
- Chassis control from the basket
- Sliding boxes for outriggers
- 2 wheel drive (10°/18%)
- 3 wheel drive (15°/26%)
- Special color
- Height control switch
- Extra narrow outrigger setting (8ft5in)
- Baskets in various sizes
- Slope alarm
- Main boom raised max 6ft while driving



ReachMaster, Inc.  
1416 D Stonehollow Dr.  
Kingwood, TX 77339  
TF: 866-358-7088  
Tel: 281-358-7088  
Fax: 281-359-3500  
[www.reachmaster.com](http://www.reachmaster.com)