



FS121/FS138 FALCON

The FALCON Series

When you need considerable work height combined with limited or narrow access and maybe even surface pressure restrictions, nothing outperforms the new FALCON series. In a field dominated by traditional boom lifts, the FALCON series sets a new standard for compact, flexible and light aerial work platform design. The new design is not only elegant, but also makes it the most user-friendly and safe unit in its class.

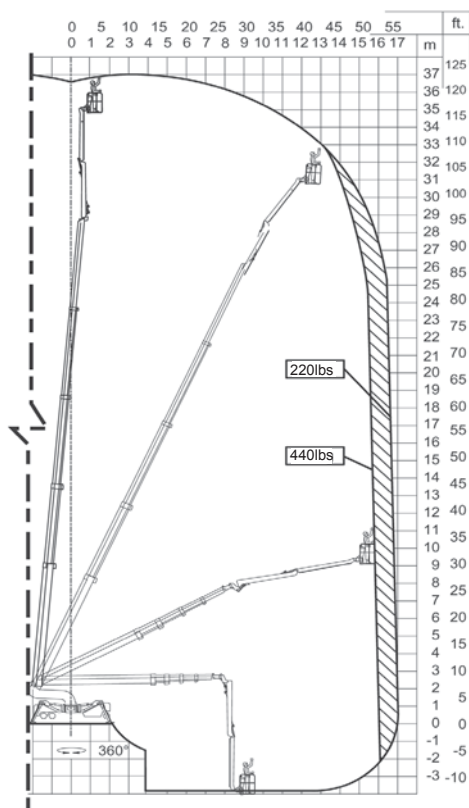
- Available in 9 models from 85ft - 138ft
- Most models available in wheel or track version
- Pass through a single or double door opening
- First and only compact lift with a double jib system
- Automatic outrigger setting (optional)
- Drive from basket (optional in wheel based lifts)
- Automatic, double safety and stability system
- Multi position outrigger system
- Set up on uneven surfaces
- Lightweight, detachable basket
- Self loads onto low bed trailer
- Customized trailer available upon request

We reserve the right to alterations

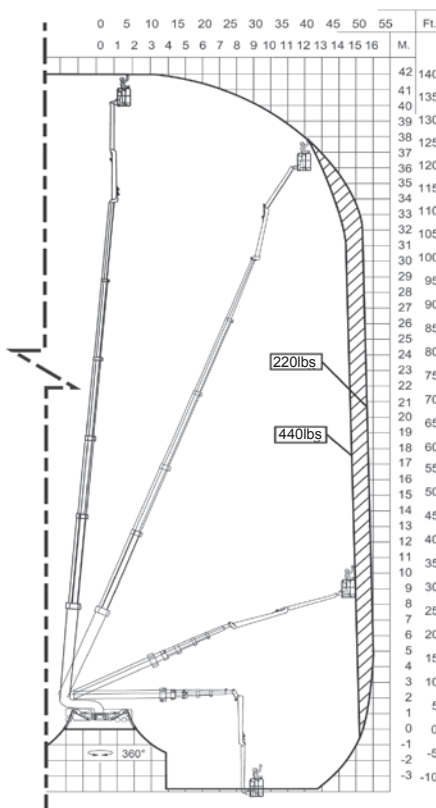
Model	FS121	FS138
Working height	121ft	138ft
Basket height	115ft	132ft
Max outreach	53ft	54ft
Jib arm (2x10ft)	20ft	20ft
Double jib arm	200°	200°
Basket load	440lbs	440lbs
Basket dims	4'7" x 2'7"	4'7" x 2'7"
Basket rotation (opt)	+/-90°	+/-90°
Turret rotation	375°	375°
Height	6ft6in	6ft6in
Length	26ft7in	27ft0in
Width	2ft11in	2ft11in
Gradability (standard)	5°/10%	5°/10%
Footprint (adjustable)	18ft4in	18ft4in
Weight (approx)	15,840lbs	17,600lbs
Max pressure, tires	84psi	97psi
Max pressure, footplate	39psi	43psi
8 battery pack	Standard	Standard
24V DC motor	Standard	Standard
Lombardini diesel engine	Option	Option
Honda generator	Option	Option



FS121



FS138



FS121/FS138 FALCON

Standard Equipment

- Automatic stability & outreach control
- Computer controlled (can-bus)
- Proportional control of all functions
- Self propelled
- Battery powered with charger
- Double jib arm
- 375° non cont. turret rotation
- Individual setting of outriggers
- Elec. checking of the power system
- Manual pump for emergency lowering
- Self-load onto trucks and trailers
- Adjustable wheel axle
- Min. width of only 2ft11in
- 2 person basket
- Space for tools etc in basket
- Storage room in chassis with lock
- Dual axle (reduces ground pressure)
- 4 wheel drive
- Portable control panel for the chassis

Optional Equipment

- 180° (+/-90°) basket rotation
- 110V AC power to the basket
- Air/water to the basket
- Distance sensor on the basket
- Wind sensor on the basket
- Lombardini diesel engine
- Honda gasoline generator
- Extra batteries
- Autosetting/leveling from basket
- Chassis control from the basket
- Sliding boxes for outriggers
- Special color
- Height control switch
- Extra narrow outrigger setting (8ft5in)
- Baskets in various sizes
- Slope alarm
- Main boom raised max 6ft while driving



ReachMaster, Inc.
1416 D Stonehollow Dr.
Kingwood, TX 77339
TF: 1-866-358-7088
Tel: 281-358-7088
Fax: 281-359-3500
www.reachmaster.com