



## B59 BLUELIFT

### The BLUELIFT Series

Meet our newest model the BlueLift B59. This lift debuted at Bauma Expo in Munich the week of April 15, 2013. Now exclusively distributed in the US, Canada and Mexico by ReachMaster, Inc. Innovation, quality, superior design and above all safety are trademarks of Bluelift s.r.l..

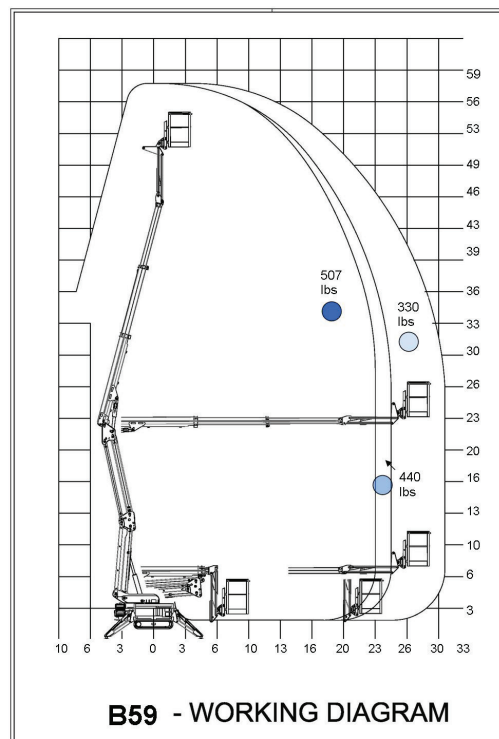
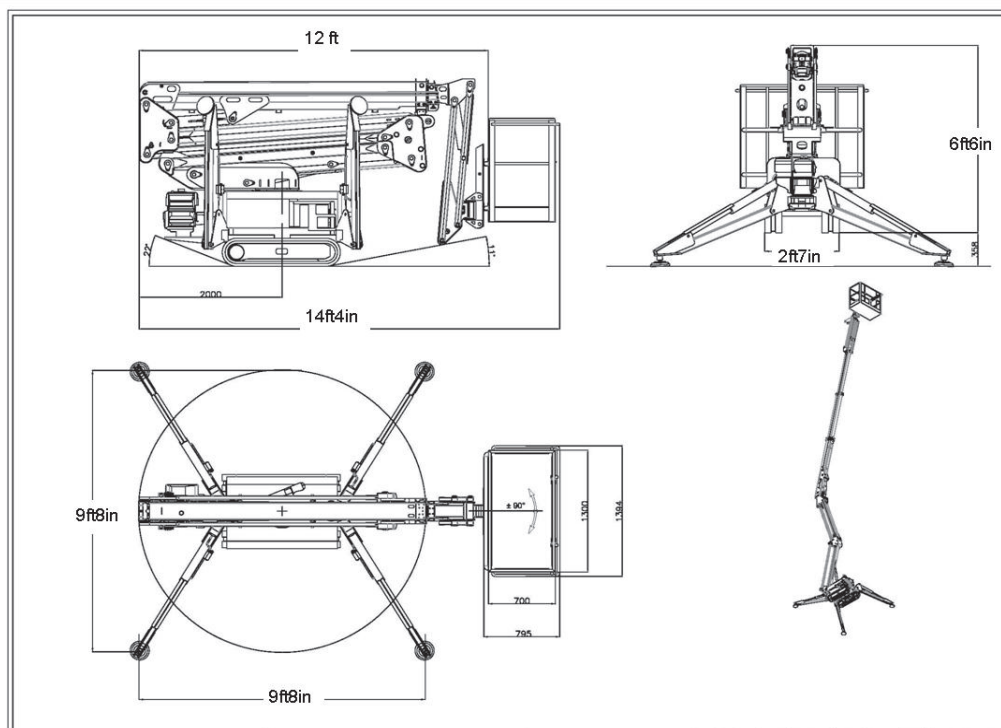
- Pass through a single or double door opening
- Automatic outrigger setting
- Non marking tires
- Self stabilizing system
- Double speed drive system
- Detachable basket
- FMS (Function Memory System)
- Automatic turret center stop

### Model

### B59

Working height	59ft
Platform height	53ft
Max outreach	
330 lbs/basket	30ft5in
440 lbs/basket	26ft
507 lbs/basket	24ft5in
Basket dims	4ft3 <sup>3</sup> / <sub>4</sub> in x 2ft3 <sup>1</sup> / <sub>2</sub> in
Basket rotation	+/-90°
Turret rotation	340°/ non continuous
Height	6ft6in
Length (w/o basket)	12ft
Length (w/ basket)	14ft4in
Width (w/o basket)	2ft7in
Footprint	9ft8in
Weight (approx)	4850lbs
Max pressure, tracks	TBA
Max pressure, footplate	TBA
Track size (per track)	TBA
Foot pad size (per pad)	TBA
110V drive motor	Standard
Honda, iGX440	Standard
Hatz diesel engine	Option

We reserve the right to alterations



# B59 BLUELIFT

## Standard Specifications:

Hydraulic Leveling platform with closed circuit  
 180° (+/-90°) basket rotation  
 Protection of outrigger cylinders  
 Non marking tracks  
 Self propelled  
 110V drive motor  
 Honda iGX440 15HP engine  
 340° non cont. turret rotation  
 Manual pump for emergency lowering  
 Width of only 2ft7in  
 2 person basket

## Options:

Track width adjusting system  
 Lithium battery hybrid  
 Diesel engine

## Additional Specifications:

Jib working angle	-100°/ 10°
Operating speed	0.9mph
Drive gradability	15°/28%
Set-up gradability	10°/18%



ReachMaster, Inc.  
 1416 D Stonehollow Dr.  
 Kingwood, TX 77339  
 TF: 866-358-7088  
 Tel: 281-358-7088  
 Fax: 281-359-3500  
[www.reachmaster.com](http://www.reachmaster.com)