



## B46 BLUELIFT

### The BLUELIFT Series

Meet our new line of aerial lifts from the well-renowned Italian manufacturer BlueLift s.r.l., now exclusively distributed in the US, Canada and Mexico by ReachMaster, Inc. Innovation, quality, superior design and above all safety are trademarks of BlueLift s.r.l.. With working heights from 39 to 72 feet, in and outdoor use and access through a single or double door. We now offer BlueLifts with lithium batteries and combustion motor combined. This combination is a first on the market for this size of compact lifts! The BlueLift series appeals to a broad range of applications: Rental industry (residential as well as commercial), window cleaners, building maintenance, tree care industry and HVAC operators to mention a few.

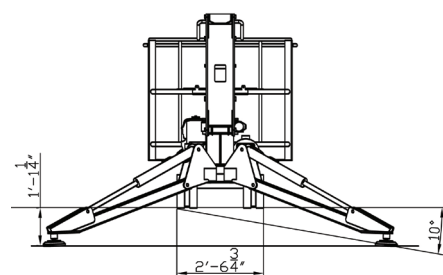
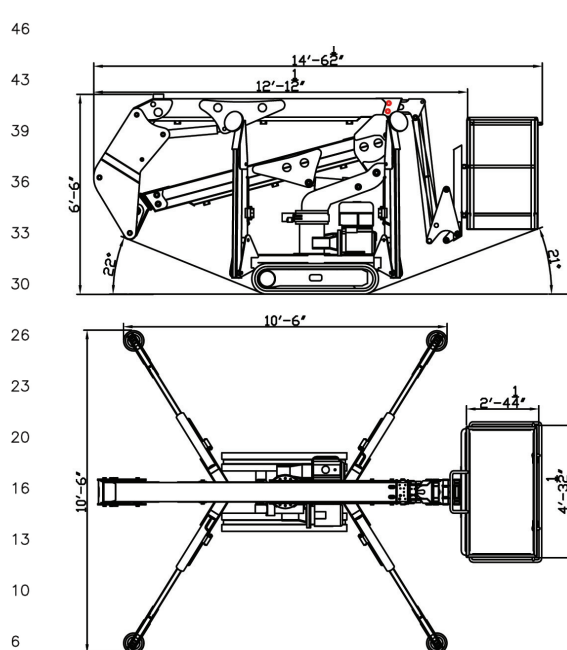
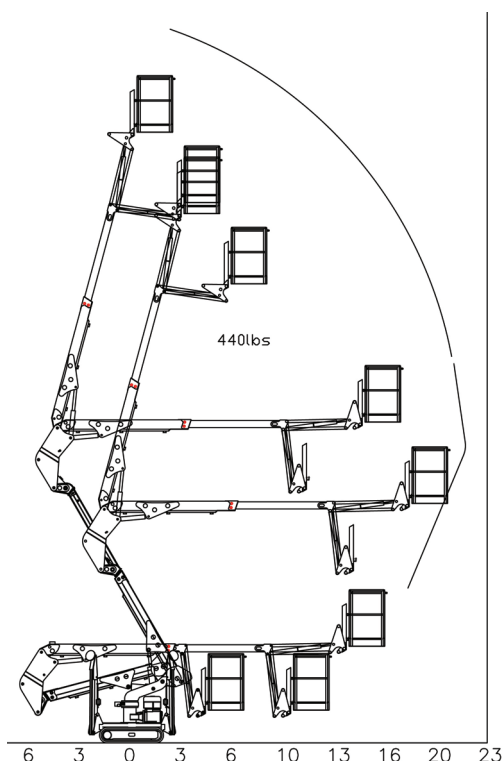
- Available in 4 models from 39ft - 72ft
- Now Available: Lithium battery and motor
- Pass through a single or double door opening
- Automatic outrigger setting
- Full work height with 440 lbs in the basket
- 110V to the basket
- Set up on uneven surfaces
- Detachable basket

### Model

### B46

Working height	46ft
Basket height	40ft
Max outreach	21ft
Basket load	440lbs
Basket dims	4ft3½in x 2ft4¼in
Basket rotation (opt)	+/-90°
Turret rotation	360°
Height	6ft6in
Length (w/o basket)	12ft1½in
Length (w/ basket)	14ft6½in
Width (w/o basket)	2ft6¾in
Footprint	10ft6in
Weight (approx)	4,070lbs
Max pressure, tracks	6.7psi
Max pressure, footplate	65.3psi
Track size (per track)	44in x 6½in
Foot pad size (per pad)	48½sq in
110V drive motor	Standard
Honda gasoline engine	Standard
Hatz diesel engine	Option
Lithium battery	Option

We reserve the right to alterations



# B46 BLUELIFT

## Standard Equipment

Computer controlled (can-bus)  
Proportional control of all functions  
Self stabilizing system  
Self propelled  
110V drive motor  
Honda iGX440 15HP engine  
360° non cont. turret rotation  
Manual pump for emergency lowering  
Width of only 2ft7in  
2 person basket  
Full work height with 440lbs in basket  
Space for tools etc in basket  
110V to the basket  
Wireless control  
FMS (Function Memory Control)  
Automatic turret center stop

## Optional Equipment

Hatz diesel engine  
Adjustable tracks  
Lithium battery

## Additional Specifications

Boom angle	0°/ +75°
Oil tank capacity	8gal
Max windspeed	28mph
Operating speed	0.9mph
Travel speed	0.9mph
Drive gradability	15°/28%
Set-up gradability	10°/18%



ReachMaster, Inc  
1416D Stonehollow Dr.  
Kingwood, TX 77339  
TF: 866-358-7088  
Tel: 281-358-7088  
Fax: 281-359-3500  
[www.reachmaster.com](http://www.reachmaster.com)