



Manitowoc Crane Group - Americas

Manitowoc, Wisconsin, USA
Tel: +1 920 684 6621
Fax: +1 920 683 6277
Shady Grove, Pennsylvania, USA
Tel: +1 717 597 8121
Fax: +1 717 597 4062

Manitowoc Crane Group - Australia

(Sales, Parts, Service)
Tel: +61 2 9896-4433
Fax: +61 2 9896-3122

Manitowoc Crane Group - Beijing

China
(Sales, Parts & Service)
Tel: +86 10 64671690
Fax: +86 10 64671691

Manitowoc Crane Group - France

France & Africa
(Sales, Parts & Service)
Tel: +33 (0)1 30 31 31 50
Fax: +33 (0)1 30 38 60 85

Manitowoc Crane Group - Germany

Germany & Central Europe
(Sales, Parts & Service)
Tel: +49 (0)2173 89 09-0
Fax: +49 (0)2173 89 09-30

Manitowoc Crane Group - Italy

Italy & Southern Europe
(Sales, Parts & Service)
Tel: +39 (0)331 49 33 11
Fax: +39 (0)331 49 33 30

Manitowoc Crane Group - Korea

(Sales, Parts & Service)
Tel: +82 2 508 3361
Fax: +82 2 508 3365

Manitowoc Crane Group - Middle East

(Sales)
Tel: +971 (0)4 338 18 61
Fax: +971 (0)4 338 23 43

Manitowoc Crane Group - Netherlands

Netherlands & North West Europe
(Sales, Parts & Service)
Tel: +31 (0)76 578 39 99
Fax: +31 (0)76 578 39 78

Manitowoc Crane Group - Philippines

(Sales, Parts & Service)
Tel: +632 844 9437
Fax: +632 844 4712

Manitowoc Crane Group - Portugal

Portugal & Spain
(Sales, Parts & Service)
Tel: +351 (0)22 969 88 40
Fax: +351 (0)22 969 88 48

Manitowoc Crane Group - Russia

Russia - CIS
(Sales, Parts & Service)
Tel: +7 495 641 23 59
Fax: +7 495 641 23 58

Manitowoc Crane Group - Shanghai - China

(Sales, Parts & Service)
Tel: +86 21 5111 3579
Fax: +86 21 5111 3578

Manitowoc Crane Group - Singapore

Asia & Pacific excluding China
(Sales, Parts & Service)
Tel: +65 6264 1188
Fax: +65 6862 4040/4142

Manitowoc Crane Group - UK

United Kingdom (Sales)
Tel: +44 (0) 1895 430 053
Fax: +44 (0) 1895 459 500
(Parts & Service) Europe Middle East and Africa
Tel: +44 (0) 191 522 2000
Fax: +44 (0) 191 522 2052

Manitowoc Crane Group Asia - Xi'an

(Sales, Parts & Service)
Tel: +86 29 87891465
Fax: +86 29 87884504



www.manitowoccranes.com

Potain, the world leading tower crane manufacturer

Potain, the worldwide leading manufacturer of tower cranes, offers a complete range of 60 models, consisting of top-slewing tower cranes, self-erecting tower cranes, and cranes for special applications. With the backing of a large international network of subsidiaries and distributors, Potain is present on all the construction sites throughout the world, with more than 100,000 cranes already sold.

Potain is part of the Manitowoc Crane Group, a business unit of The Manitowoc Company. In addition to Potain tower cranes, Manitowoc Crane Group also manufactures Manitowoc Cranes' brand lattice-boom crawler cranes, Grove-branded mobile telescopic cranes and National Crane boom trucks.

Manitowoc Crane CARE

Manitowoc Crane CARE is the Manitowoc Crane Group's unparalleled product support organization. Manitowoc Crane CARE combines all aspects of parts, service, technical documents, technical support and training into one place. The program also includes all of the Manitowoc Crane Group's brands, which include Potain, Grove, Manitowoc and National Crane.

For the care of your crane and the prosperity of your business, Manitowoc Crane CARE is your single source for customer support. Wherever, whenever, whatever – we're there.



Manitowoc Crane Group - Americas - World Headquarters

2400 S. 44th Street • Manitowoc • WI 54220 USA
Tel: +1 920 684 4410 • Fax: +1 920 652 9778

Manitowoc Crane Group - Europe, Middle East & Africa

Manitowoc Crane Group France SAS • 18, rue de Charbonnières • B.P. 173
69132 ECULLY Cedex • FRANCE
Tel: +33 (0)4 72 18 20 20 • Fax: +33 (0)4 72 18 20 00

Manitowoc Crane Group - Asia & Pacific

4 Kwong Min Road. SINGAPORE 628707 • SINGAPORE
Tel: +65 6264 1188 • Fax: +65 6862 4040

www.manitowoccranes.com - www.potain.com

MCT 50 | MCT 58 | MCT 68



“Designed for working
in **restricted spaces**”



**3 new models
for the MCT City range**

Max. load	2,5 T to 3 T
Max. jib	46 m
Load at jib nose	
• MCT 50	1,1 T at 41 m
• MCT 58	1,2 T at 42 m
• MCT 68	1,1 T at 46 m
Mast cross-section	1,2 m
Hook height	38,9 m



www.manitowoccranes.com



Its design makes handling easy and fully secure.



Several tricks for an even faster erection

Frame in two parts (same on ZC and ZD).

A single axis for the jib - counter-jib connection.



Ballast blocks: 2 types, 3 t and 1 t, allowing different ballasting combinations.

Monoblock counter-jib with stabilizer which can be folded away during transport.

Counter-jib / orientation assembly identical for all jib versions, equipped ex works, no ground preparation.

- Blocks interchangeable with other models of the MCT range.

Assembly of the jib elements by splicing, easy and effortless

2 slots on the lower members and a single axis on the upper member. Certain elements within the MCT range interchangeable.



HISTORICAL CENTER Option

Transport of packages of 6 m and 3 T for easy assembly in tight and hard-to-access town centers. Option available on MCT 58.

All the technology of Potain's know-how

> for **productivity** and **comfort** when driving:

mechanisms with a serial frequency converter for better performance.

- Progressive speed variation during distribution (DVF).
- Up to 70% gain in production with the Optima variable frequency hoisting (LVF Optima).
- Driving adapts to the behavior of the crane operator: control of the rotation movement with possibility of stopping it through counter-orientation in the slowing phase (RVF Optima +).

> **Intelligence** at the service of preventive maintenance

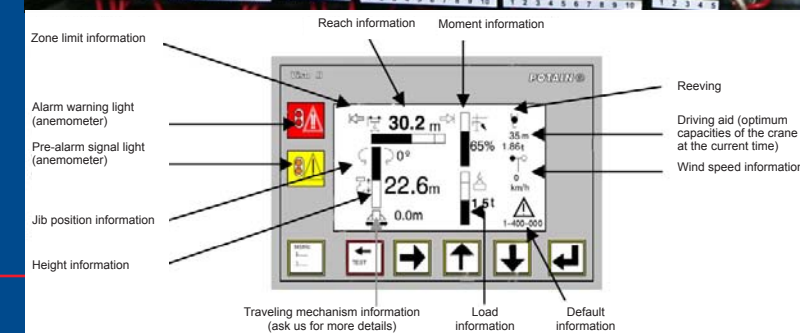
New on-board computer (electrical cabinet):

- Evolutive system allowing the intuitive installation of the Top Site, radio control, etc. options.
- Optimization of the machine fleet management through the memorization of all information.
- Man-machine dialog facilitated.



> **Latest-generation technological solutions**

- Dialog Visu II : graphic display box showing many essential indicators for the intuitive driving aid.
- Top Tracing II and Top Site : zone and/or interference control systems.



> **Flexibility** in use and **visibility** of information

- Integrated remote control with indicators, provided as series.

