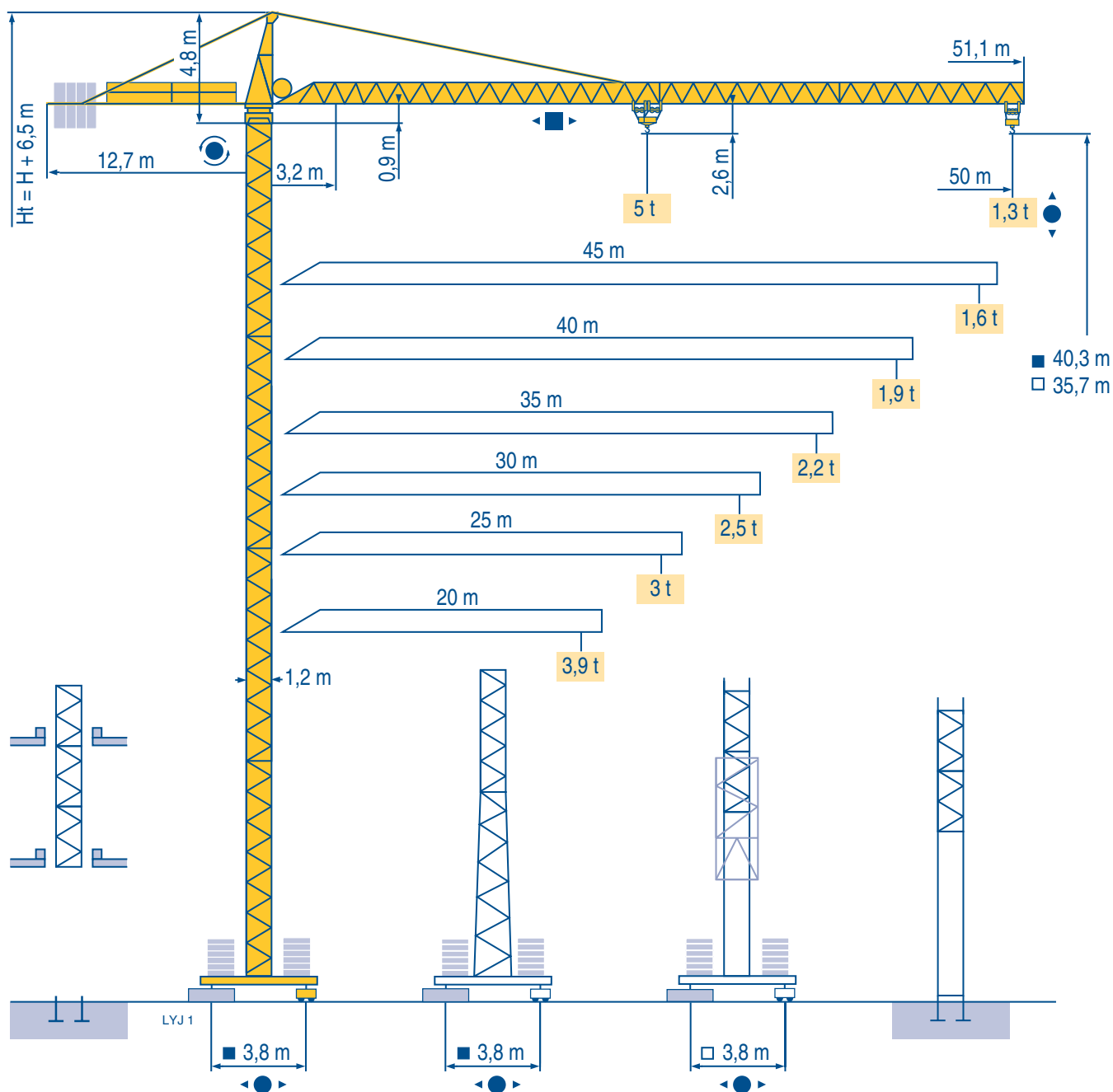




POTAIN

MC 85 B



CITY CRANE

CE FEM 1.001-A3

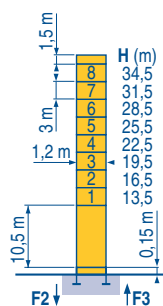
Manitowoc
Crane Group



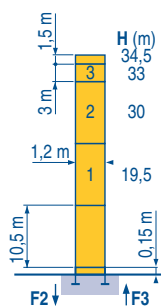


Mat / Réactions \square 1,2 m
 Maste / Eckdrücke \triangle
 Masts / Reactions 20 m \Rightarrow 50 m
 Mástil / Reacciones
 Torre / Reazioni
 Tramo / Reações

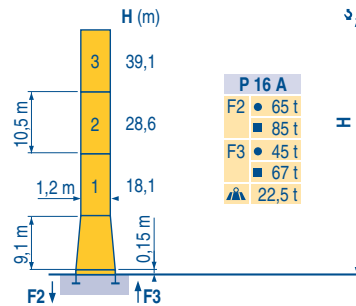
LY11



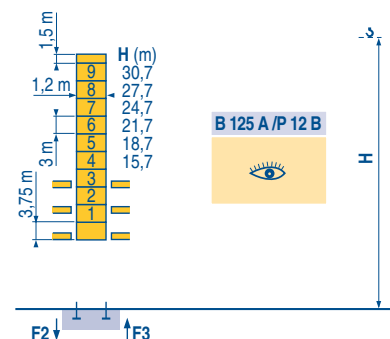
P 12 C	
F2	● 76 t
	■ 91 t
F3	● 56 t
	■ 73 t
	22 t



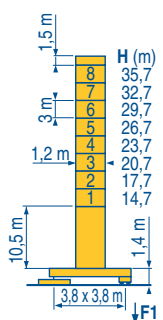
P 12 C	
F2	● 76 t
	■ 91 t
F3	● 56 t
	■ 73 t
	22 t



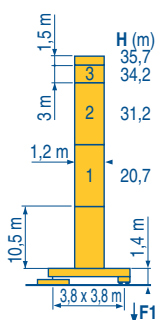
P 16 A	
F2	● 65 t
	■ 85 t
F3	● 45 t
	■ 67 t
	22,5 t



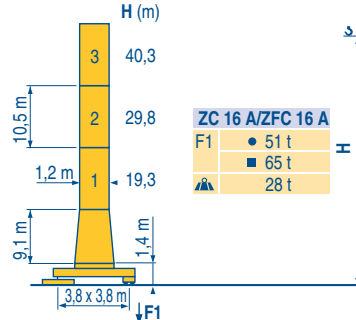
B 125 A/P 12 B	



ZF 12 A/ZFC 12 A	
F1	● 44 t
	■ 53 t
	27,5 t

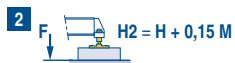


ZF 12 A/ZFC 12 A	
F1	● 44 t
	■ 53 t
	27,5 t



ZC 16 A/ZFC 16 A	
F1	● 51 t
	■ 65 t
	28 t

ZF - ZC - ZFC



CITY CRANE
MC 85 B



F

Réactions en service
 Réactions hors service
 A vide sans lest (ni train de transport) avec flèche et hauteur maximum.

D

Reaktionskräfte in Betrieb
 Reaktionskräfte außer Betrieb
 Ohne Last, Ballast (und Transportachse), mit Maximalausleger und Maximalhöhe.

GB

Reactions in service
 Reactions out of service
 Without load, ballast (or transport axles), with maximum jib and maximum height.

E

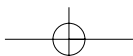
Reacciones en servicio
 Reacciones fuera de servicio
 Sin carga, sin lastre, (ni tren de transporte), flecha y altura máxima.

I

Reazioni in servizio
 Reazioni fuori servizio
 A vuoto, senza zavorra (ne assali di trasporto) con braccio massimo e altezza massima.

P

Reações em serviço
 Reações fora de serviço
 Sem carga (nem trem de transporte)- sem lastro com lança e altura máximas.





Courbes de charges

Lastkurven

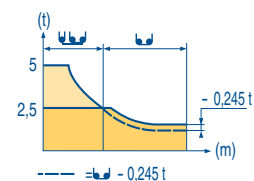
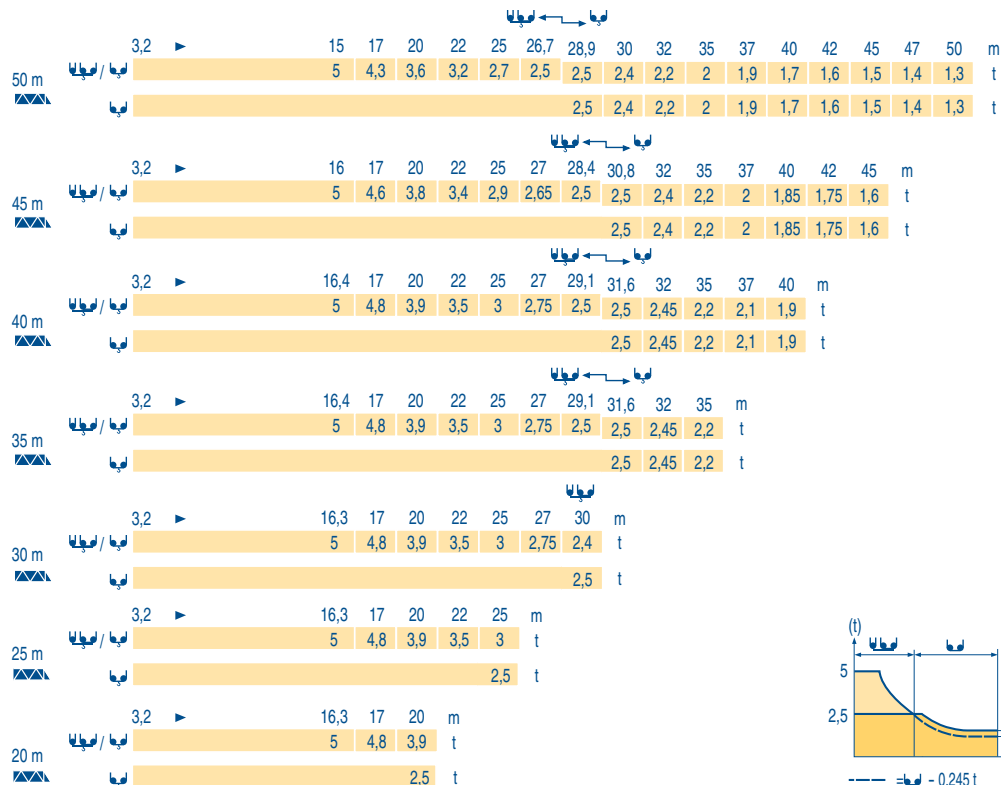
Load diagrams

Curvas de cargas

Curve di carico

Curva de cargas

LYJ 1



Télescopage sur dalles

Kletterkrane im Gebäude

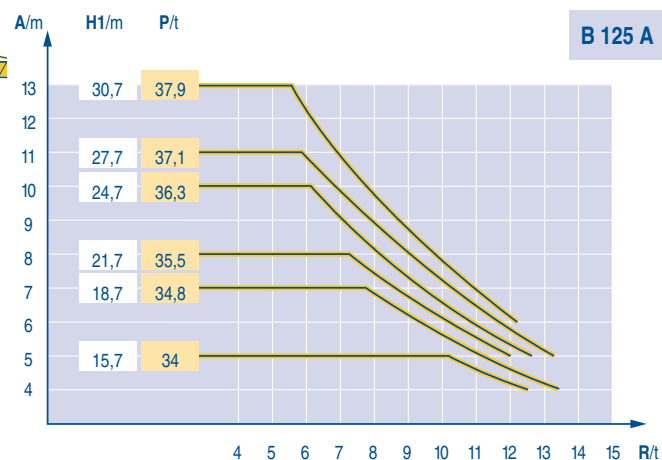
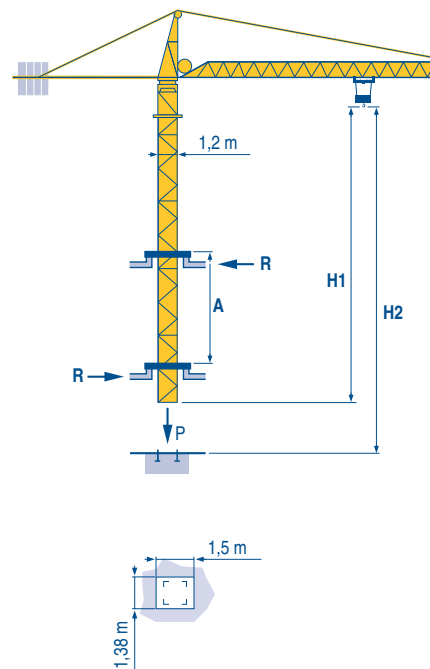
Climbing crane

Telescopage gruas trepadoras

Gru in cavedio

Telescopagem sobre lages

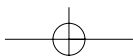
LYJ 1



CITY CRANE
MC 85 B



	F	D	GB	E	I	P
A	Distance entre cadres	Abstand zwischen den Rahmen	Distance between collars	Distancia entra marcos	Distanza fra i telai	Distância entre quadros
H1	Hauteur grue	Kranhöhe	Crane height	Altura grúa	Altezza gru	Altura da grua
P	Poids de la grue(en service)	Krangelicht (in Betrieb)	Crane weight (in service)	Peso de la grúa (en servicio)	Peso della gru (in servizio)	Peso da grua (em serviço)
R	Réaction horizontale	Horizontalkräfte	Horizontal reaction	Reaccion horizontal	Reazione orizzontale	Reacção horizontal
	Voir télescopage sur dalles	Siehe Kletterkrane im Gebäude	See climbing crane	Vea grua trepadora	Consultare gru in cavedio	Ver telescopagem sobre lages





Mécanismes
Antriebe
Mechanisms
Mecanismos
Meccanismi
Mecanismos

LYJ 1

		☺			☺☺			ch - PS hp	kW		
		☺	☺	☺	☺	☺	☺				
▲ ▼	15 PC 13-6	m/min	7,2	21,5	43	3,6	11	21,5	15	11	185 m
		t	2,5	2,5	1,3	5	5	2,6			
	25 PC 13-8	m/min	8,2	33	66	4,1	16,5	33	25	18	323 m
		t	2,5	2,5	1,3	5	5	2,6			
20 LVF 13	m/min	5 → 28,4 → 52,6 → 69			2,5 → 14,4 → 26,3 → 34,5			20	15	323 m	
	t	2,5	2,5	1,3	0,65	5	5				2,6
◀ ▶	4 D3 V3	m/min	15 - 30 - 58						4	3	
	RCV 60	tr/min U/min rpm	0 → 0,8						8	6	
	TVD 324	m/min	26						2 x 4	2 x 2,9	
	RT 224	m/min	25						2 x 4	2 x 2,9	
CEI 38		IEC 38		kVA							
400 V (+6% -10%) 50 Hz		15 PC : 30 kVA 25 PC : 35 kVA 20 LVF : 30 kVA			2000/14						

	F	D	GB	E	I	P
	Levage	Heben	Hoisting	Elevación	Sollevamento	Elevação
	Distribution	Katzfahren	Trolleying	Distribución	Distribuzione	Distribuição
	Orientation	Schwenken	Slewing	Orientación	Rotazione	Rotação
	Translation	Kranfahren	Travelling	Traslación	Traslazione	Translação
	Conforme aux directives CEE sur le niveau acoustique	Gemäss EWG-Richtlinien für den Schall-Leistungspegel	In compliance with the EEC Instructions on noise level	Conforme con las directivas CEE sobre el nivel acustico	Conforme alle direttive CEE sul livello acustico	Conforme as directivas CEE sobre o nível acústico



Document commercial non contractuel. Pour toute information technique se référer à la notice correspondante

Unverbindliches Vertriebsdokument. Für technische Informationen, siehe die entsprechenden Anweisungen.

This commercial document is not legally binding. For any technical information, please refer to the corresponding instructions.

Documento comercial no contractuel. Para cualquier información técnica, ver la noticia correspondiente.

Documento commerciale non vincolante, per tutte le informazioni tecniche fare riferimento al catalogo istruzioni

Documento comercial não contratual. Para qualquer informação técnica complementar consultar as respectivas instruções

Manitowoc
Crane CARE

POTAIN

Manitowoc Crane Group



Americas

Tel : +1 920 683 6322
Tel : +1 717 597 8121

Europe - Middle East - Africa

Tel : +(33) 4 72 81 50 00
Tel : +(44) 191 565 6281

Asia - Pacific

Tel : +(65) 6861 7133
Fax : +(65) 6862 4142

www.manitowoccrane.com

18, rue de Charbonnières - B.P.173
69132 ECULLY Cedex - France

Tél. : (33) 4 72 18 20 20
Fax. : (33) 4 72 18 20 00
www.manitowoccrane.com www.potain.com

CITY CRANE MC 85 B

Réf. 2003 48 LYJ 1

Copyright.Reproduction interdite © POTAIN 2003

Réalisation HeadLines

