



View thousands of Crane Specifications on [FreeCraneSpecs.com](https://FreeCraneSpecs.com)

**PALFINGER**

LIFETIME EXCELLENCE

# MATERIAL HANDLING CRANES





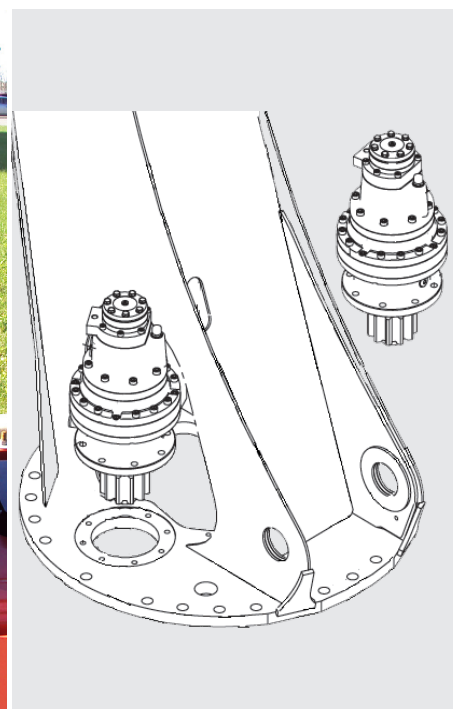


Offering the best overall Total Cost of Ownership, PALFINGER provides the most durable and service friendly wall-board cranes on the market. The tare weight of a PALFINGER wallboard cranes is unrivaled in the market, offering increases in your daily payloads. Have confidence in your fleet knowing that PALFINGER, with our vast dealer and service network, will keep you working profitably.



## ADVANCED ROTATION SYSTEM

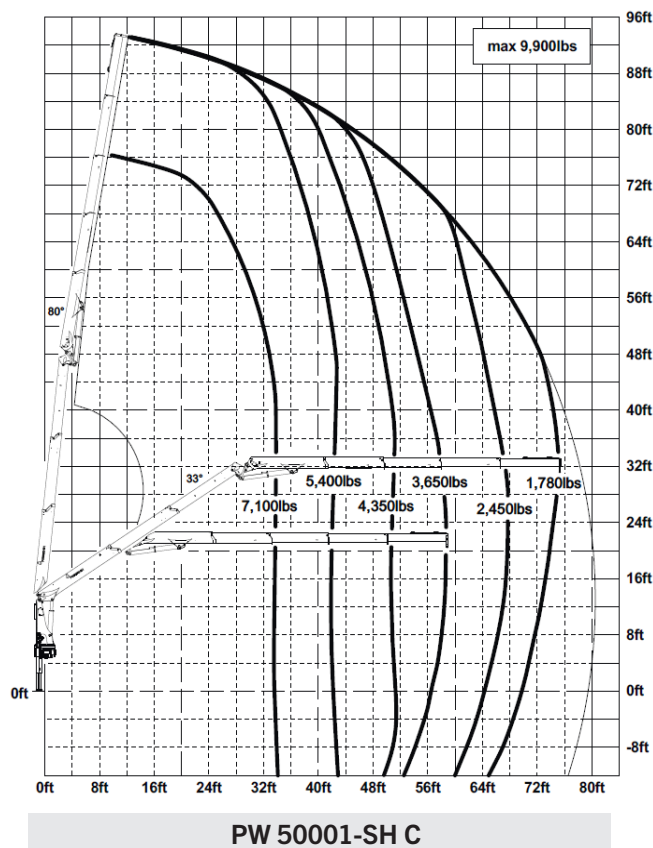
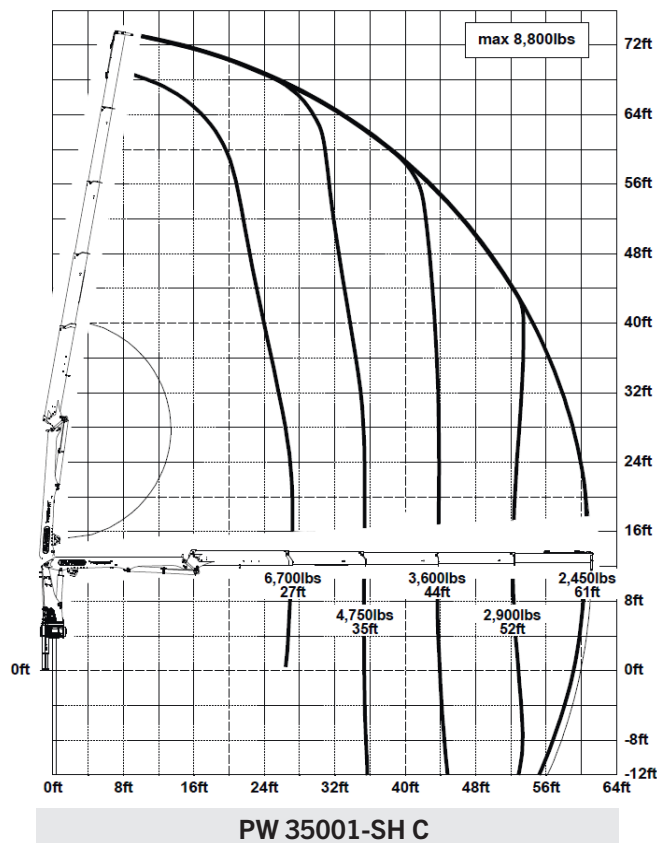
Proven durable rotation system from PALFINGER large cranes. The slewing system ensures maximum productivity. Industry leading slewing torque with dual drive motors ensures and extremely precise crane movements.





# THE RIGHT SPECIFICATIONS FOR YOUR MATERIAL HANDLING NEEDS

Model	Maximum Lifting Moment (ft.lbs)	Gross Rotation Torque (ft.lbs)	Slewing Range	Stabilizer Spread	Weight (FL, R3X, STZS3, 4) (lbs)	Maximum Horizontal Reach	Maximum Vertical Reach	Maximum Horizontal Capacity (lbs)
PW 32001 A	194,790	42,700	470°	21'8"	6,742	43'	55'6"	4,450 @ 42'
PW 32001 B	174,220	42,700	470°	21'8"	7,716	52'8"	64'8"	2,950 @ 52'
PW 32001 C	159,850	42,700	470°	21'8"	7,829	61'	73'2"	2,050 @ 61'
PW 35001-SH A	218,170	42,700	470°	21'8"	6,742	43'	55'6"	5,000 @ 42'
PW 35001-SH B	197,590	42,700	470°	21'8"	7,716	52'8"	64'8"	3,400 @ 52'
PW 35001-SH C	183,220	42,700	470°	21'8"	7,829	61'	73'2"	2,450 @ 61'
PW 38001 B	227,180	51,330	470°	24'4"	8,550	52'9"	64'8"	3,950 @ 52'
PW 38001 C	231,430	51,330	470°	24'4"	9,240	61'	73'2"	2,900 @ 61'
PW 42001-SH B	256,110	51,330	470°	24'4"	8,770	52'9"	64'8"	4,500 @ 52'
PW 42001-SH C	241,640	51,330	470°	24'4"	9,480	61'	73'2"	3,350 @ 61'
PW 50001-SH C	253,220	51,330	470°	24'4"	11,710	80'9"	93'	1,780 @ 76'

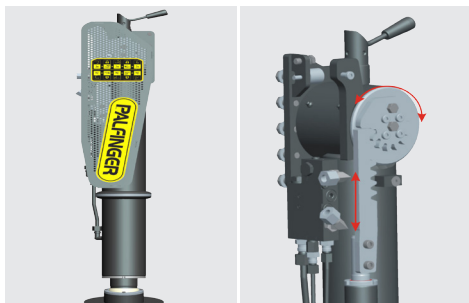






# INNOVATIVE HIGHLIGHTS

\* Optional features



## HYDRAULIC TILTABLE STABILIZERS \*

Hydraulically tiltable stabilizers are a nice feature for crane operators and installers. Cranes can be installed directly above axles, tanks and tool boxes. They allow for longer cylinder strokes with ideal ground clearances and ground penetration. Additionally, they allow a crane to be setup in restricted spaces. Obstacles like guard rails, walls or fences can be overcome.



## MAINTENANCE FREE EXTENSION SYSTEM

Cranes extension system is maintenance free offering a clean working environment with reduced service time and costs.



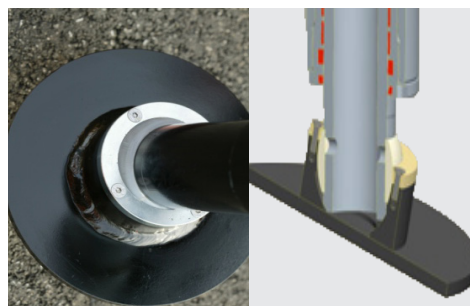
## CONTROL STATION

Radio remote controlled cranes feature a superior control station with easy to use features. Service functions are easily carried out via integrated display hydraulic test ports and access panels.



## STABILIZER WARNING LIGHTS

LED warning lights on the stabilizer cylinders are standard on all PW cranes. The bright orange lights offer superior visibility of the stabilizers.



## TILTABLE STABILIZER PLATES

Stabilizer plates are permanently fixed to the stabilizer and feature a 14° tiltable offset to adapt to ground conditions. Stabilizer foot plates do not need to be removed for transport.



## POWERLINK

The PowerLink system offers increase lifting power at awkward boom angles, constant lifting speeds and superior vertical lifting power.



## TRANSPORT SWITCHES \*

Factory mounted switches to indicate transport positions offers well protected mounting positions and clean appearance.

- » Boom in transport position switch. (TRAN2)
- » Outriggers and stabilizers retracted. (ABSTW)



## PALTRONIC 150

PW cranes with "-SH" versions feature our PALTORNIC 150 control system. System offers Soft Stop features at end of cylinder strokes and automatic capacity increase with speed reduction at top 85% of power range. Offers superior control and smooth crane operation with reduced load shock.



## ACTIVE OSCILLATION SUPPRESSION (AOS) \*

Loads are held steady, rather than bouncing after abrupt stops. The boom experiences much less shock loading. Novice crane users can operate the crane much smoother and more accurately. Experienced crane users can run the crane faster, with no loss of accuracy. U.S. Patent # 6,328,173. Other patents apply.



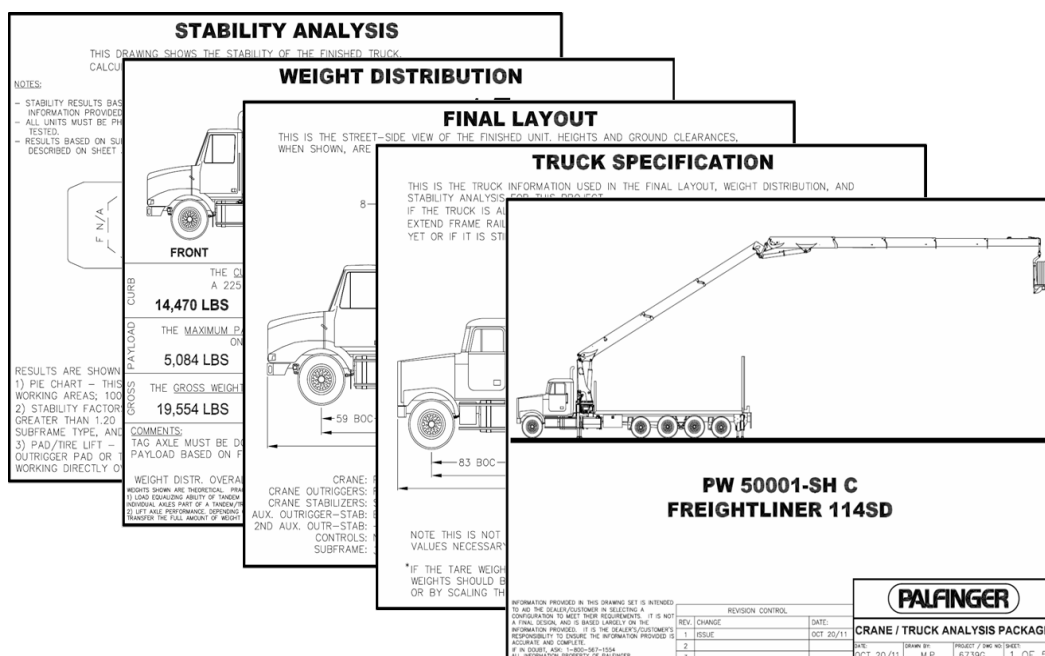
# NORTH AMERICAN ASSEMBLY



Located in Niagara Falls, Palfinger North America has become the market leader in the design and manufacturing of truck mounted cranes. Worldwide, PALFINGER stands for the most EFFICIENT, RELIABLE and INNOVATIVE lifting, loading and handling solutions for the LIFETIME of the product. Investing in PALFINGER products means receiving the highest level of performance, support and service. Expect LIFETIME EXCELLENCE from the market leader in crane technology!

# SUPERIOR ENGINEERING

PALFINGER authorized Dealers and Service Centers are factory trained. Rely on PALFINGER and our vast dealer network to offer the highest quality installations and after sale support services. Dealer installations are carried out through PALFINGER engineering services to ensure optimum layout, weight distribution and stability.







**PALFINGER**

[WWW.PALFINGER.COM](http://WWW.PALFINGER.COM)

