

**PALFINGER**

LIFETIME EXCELLENCE

# MATERIAL HANDLING CRANES PW-SERIES







LIFETIME EXCELLENCE

HOME

OVERVIEW

FEATURES

SERVICE

ABOUT US

MAT  
PW-S



## THE PERFECT MATCH FOR DELIVERY OF BUILDING MATERIALS

The innovative GT-Series of Truck-Mounted Forklifts offers a center seated design with a powerful anti-stall hydraulic drive system, leading capacity to weight ratio, excellent ground clearance, and outstanding all-round operator visibility.

**A reliable partner when it comes to material handling jobs.**



ONE PARTNER  
FOR YOUR NEEDS



**PALFINGER FORKLIFT - EASILY  
DELIVERS BUILDING MATERIALS  
THROUGH THE MOST RUGGED  
TERRAINS WITH ITS DURABLE CLEAR  
VIEW MAST AND CONCIAL DESIGN**

**→ SHOW MORE**

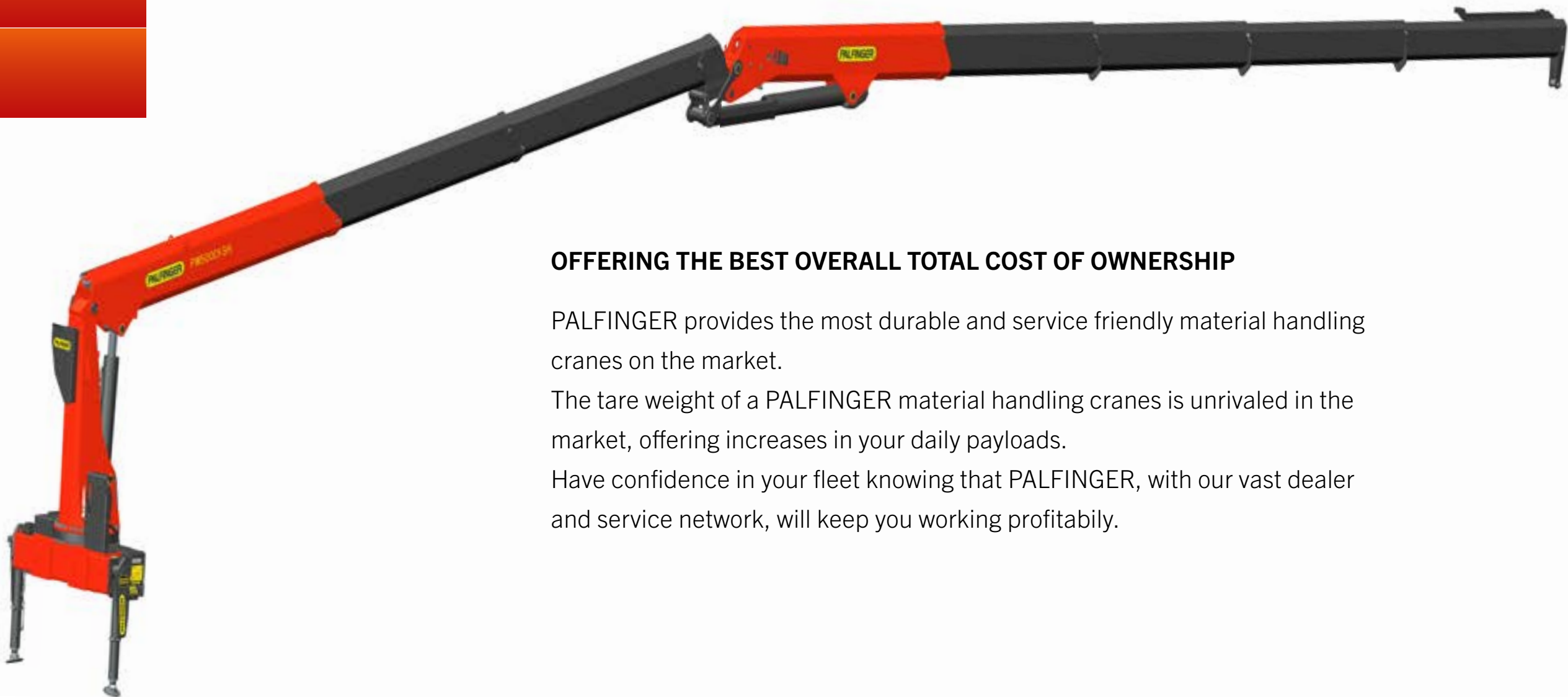


# MATERIAL HANDLING CRANES

## PW-SERIES



GENERAL	TECHNICAL DATA	APPLICATIONS
---------	----------------	--------------



### OFFERING THE BEST OVERALL TOTAL COST OF OWNERSHIP

PALFINGER provides the most durable and service friendly material handling cranes on the market.

The tare weight of a PALFINGER material handling cranes is unrivaled in the market, offering increases in your daily payloads.

Have confidence in your fleet knowing that PALFINGER, with our vast dealer and service network, will keep you working profitably.



# MATERIAL HANDLING CRANES

## PW-SERIES



GENERAL		TECHNICAL DATA			APPLICATIONS			
MODEL	MAX. LIFTING MOMENT (FT.IBS)	GROSS ROTATION TORQUE (FT.IBS)	SLEWING RANGE	STABILIZER SPREAD	WEIGHT (FL, R3X, STZS3, 4) (IBS)	MAX. HORIZONTAL REACH	MAX. VERTICAL REACH	MAX. HORIZONTAL CAPACITY (IBS)
PW 32001 A	194,850	42,700	470°	22' 5"	6,742	43'	55'6"	4,450 @ 42'
PW 32001 B	174,270	42,700	470°	22' 5"	7,716	52'8"	64'8"	2,950 @ 52'
PW 32001 C	159,890	42,700	470°	22' 5"	8,440	61'	73'2"	2,050 @ 61'
PW 35001-SH A	218,230	42,700	470°	22' 5"	6,742	43'	55'6"	5,000 @ 42'
PW 35001-SH B	197,650	42,700	470°	22' 5"	7,716	52'8"	64'8"	3,400 @ 52'
PW 35001-SH C	183,270	42,700	470°	22' 5"	8,440	61'	73'2"	2,450 @ 61'
PW 38001 B	227,180	51,330	470°	25' 1"	8,550	52'9"	64'8"	3,950 @ 52'
PW 38001 C	231,430	51,330	470°	25' 1"	9,240	61'	73'2"	2,900 @ 61'
PW 42001-SH B	256,110	51,330	470°	25' 1"	8,770	52'9"	64'8"	4,500 @ 52'
PW 42001-SH C	241,640	51,330	470°	25' 1"	9,480	61'	73'2"	3,350 @ 61'
PW 50001-SH C	253,220	51,330	470°	25' 1"	11,710	80'9"	93'	1,780 @ 76'





PALFINGER

LIFETIME EXCELLENCE

HOME

OVERVIEW

FEATURES

SERVICE

ABOUT US



→ ENGINEERING SERVICES

Dealer installations are carried out through PALFINGER engineering services to ensure optimum layout, weight distribution and stability.

# MATERIAL HANDLING CRANES

## PW-SERIES



GENERAL	ENGINEERING SERVICE	
MODEL		
PW 32001 A		
PW 32001 B		
PW 32001 C		
PW 35001-SH		
PW 35001-SH		
PW 35001-SH		
PW 38001 B		
PW 38001 C		
PW 42001-SH		
PW 42001-SH		
PW 50001-SH		
		MAX. HORIZONTAL CAPACITY (IBS)
		4,450 @ 42'
		2,950 @ 52'
		2,050 @ 61'
		5,000 @ 42'
		3,400 @ 52'
		2,450 @ 61'
		3,950 @ 52'
		2,900 @ 61'
		4,500 @ 52'
		3,350 @ 61'
		1,780 @ 76'



HOME

OVERVIEW

FEATURES

SERVICE

ABOUT US



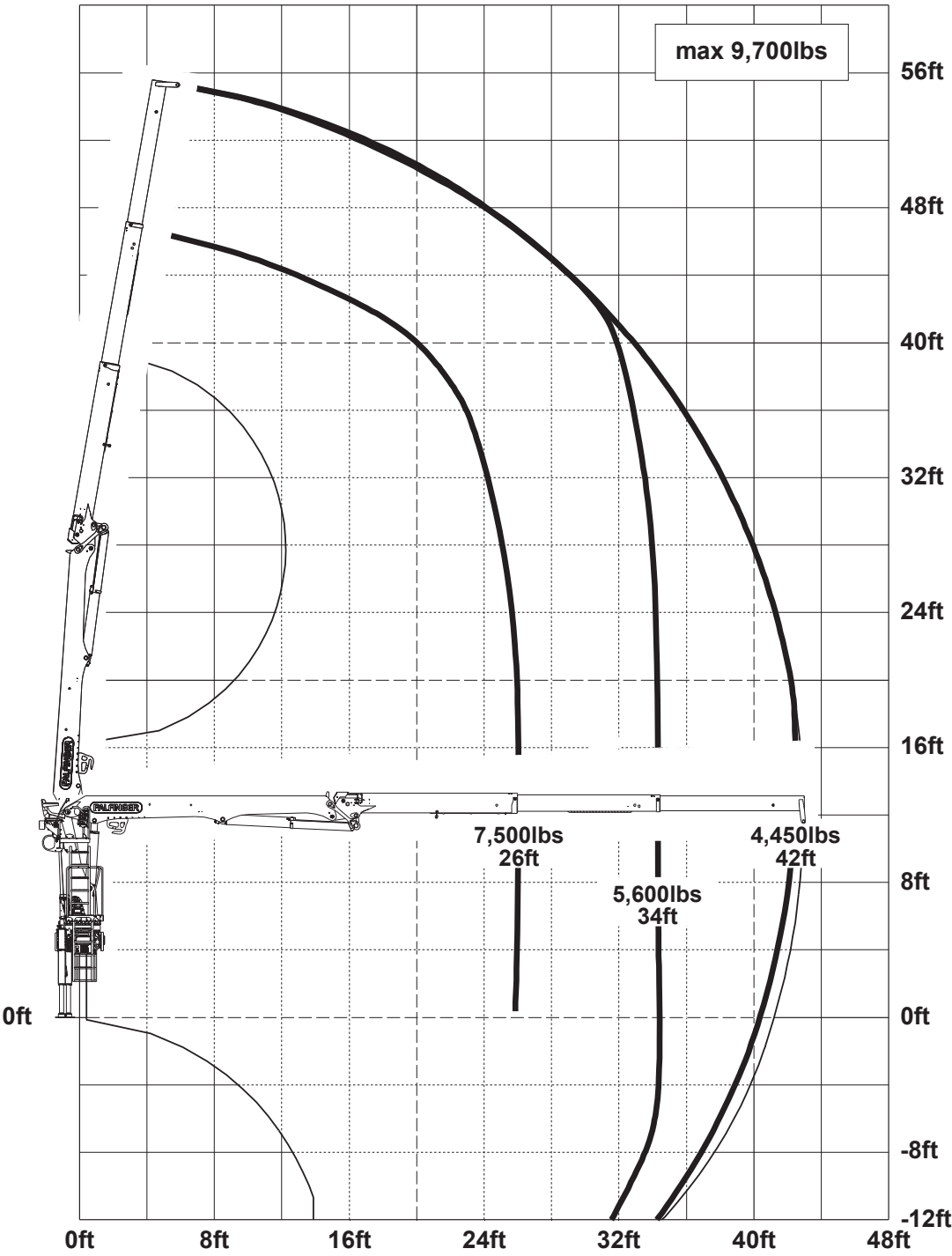
→ ENGINEERING SERVICES

Dealer installations are carried out through PALFINGER engineering services to ensure optimum layout, weight distribution and stability.

MATERIAL  
PW-SERIES

GENERAL	
MODEL	MAX. LIFTING MOMENT (FT.IBS)
PW 32001 A	194,850
PW 32001 B	174,270
PW 32001 C	159,890
PW 35001-SH A	218,230
PW 35001-SH B	197,650
PW 35001-SH C	183,270
PW 38001 B	227,180
PW 38001 C	231,430
PW 42001-SH B	256,110
PW 42001-SH C	241,640
PW 50001-SH C	253,220

PW 32001 A



L MAX. HORIZONTAL  
CAPACITY (IBS)

4,450 @ 42'

2,950 @ 52'

2,050 @ 61'

5,000 @ 42'

3,400 @ 52'

2,450 @ 61'

3,950 @ 52'

2,900 @ 61'

4,500 @ 52'

3,350 @ 61'

1,780 @ 76'



LIFETIME EXCELLENCE

HOME

OVERVIEW

FEATURES

SERVICE

ABOUT US



→ ENGINEERING SERVICES

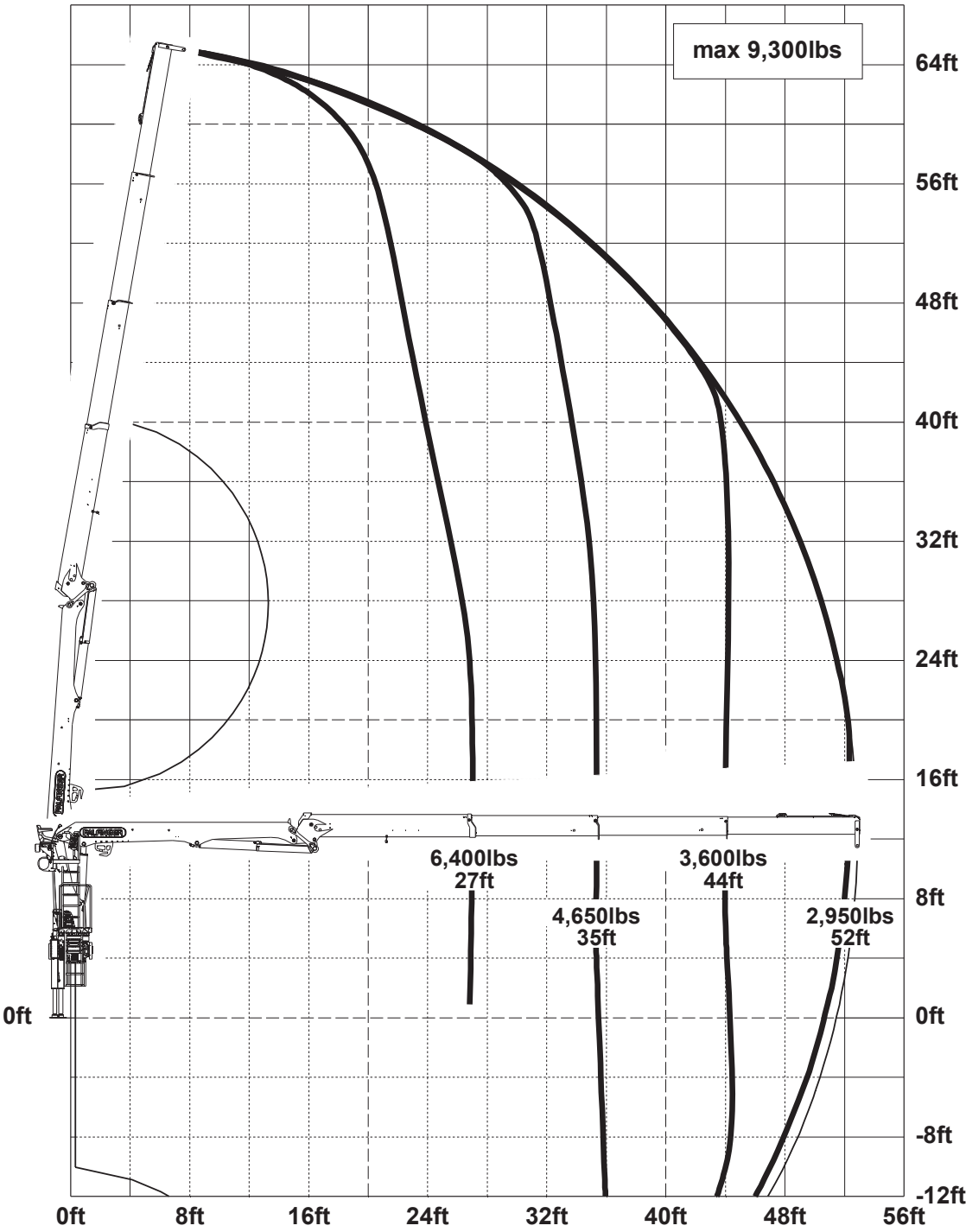
Dealer installations are carried out through PALFINGER engineering services to ensure optimum layout, weight distribution and stability.

MATERIAL  
PW-SERIES

GENERAL

MODEL	MAX. LIFTING MOMENT (FT.IBS)
PW 32001 A	194,850
PW 32001 B	174,270
PW 32001 C	159,890
PW 35001-SH A	218,230
PW 35001-SH B	197,650
PW 35001-SH C	183,270
PW 38001 B	227,180
PW 38001 C	231,430
PW 42001-SH B	256,110
PW 42001-SH C	241,640
PW 50001-SH C	253,220

PW 32001 B



L MAX. HORIZONTAL  
CAPACITY (IBS)

4,450 @ 42'
2,950 @ 52'
2,050 @ 61'
5,000 @ 42'
3,400 @ 52'
2,450 @ 61'
3,950 @ 52'
2,900 @ 61'
4,500 @ 52'
3,350 @ 61'
1,780 @ 76'



HOME

OVERVIEW

FEATURES

SERVICE

ABOUT US



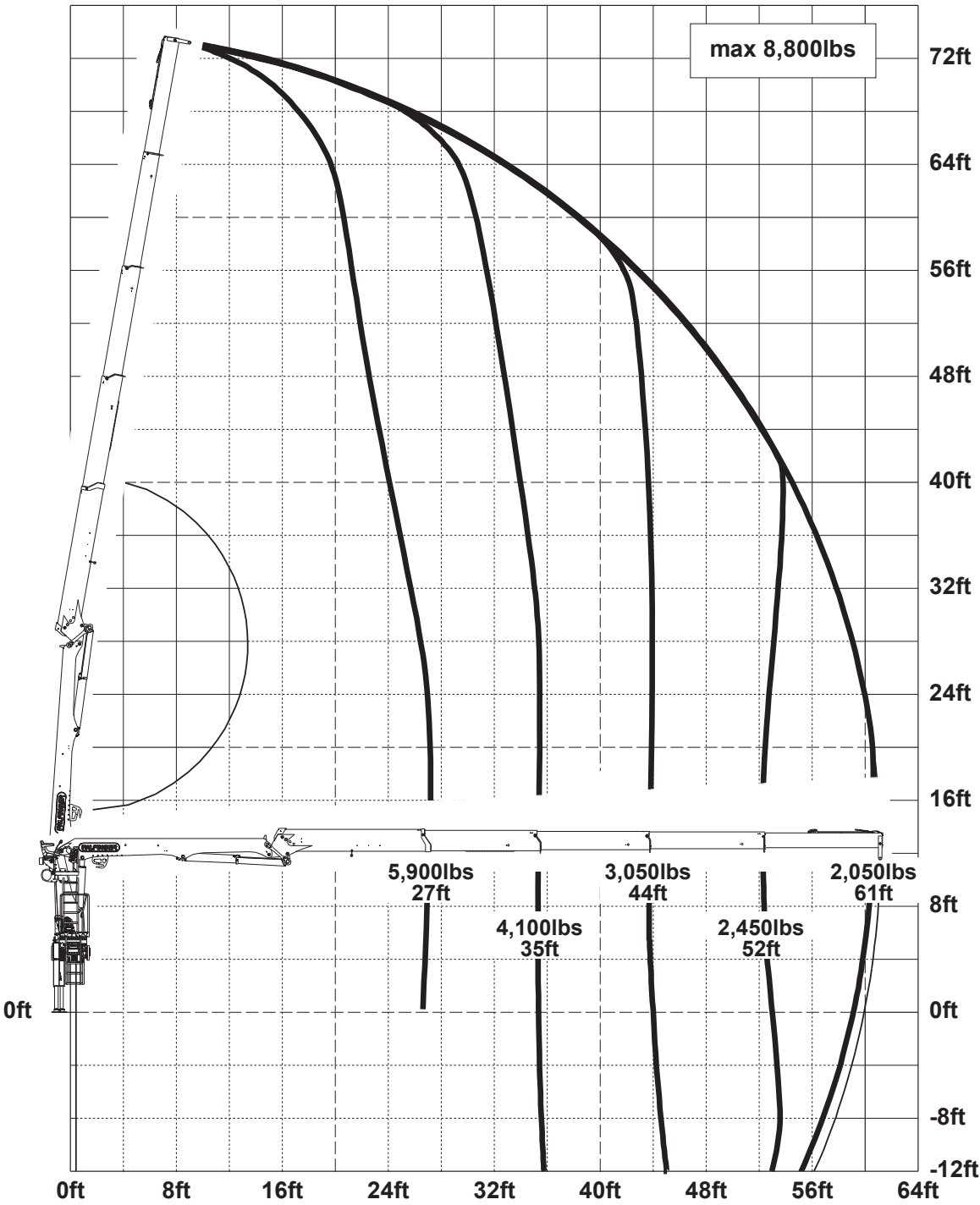
→ ENGINEERING SERVICES

Dealer installations are carried out through PALFINGER engineering services to ensure optimum layout, weight distribution and stability.

MATERIAL  
PW-SERIES

GENERAL	
MODEL	MAX. LIFTING MOMENT (FT.IBS)
PW 32001 A	194,850
PW 32001 B	174,270
PW 32001 C	159,890
PW 35001-SH A	218,230
PW 35001-SH B	197,650
PW 35001-SH C	183,270
PW 38001 B	227,180
PW 38001 C	231,430
PW 42001-SH B	256,110
PW 42001-SH C	241,640
PW 50001-SH C	253,220

PW 32001 C



L	MAX. HORIZONTAL CAPACITY (IBS)
	4,450 @ 42'
	2,950 @ 52'
	2,050 @ 61'
	5,000 @ 42'
	3,400 @ 52'
	2,450 @ 61'
	3,950 @ 52'
	2,900 @ 61'
	4,500 @ 52'
	3,350 @ 61'
	1,780 @ 76'





LIFETIME EXCELLENCE

HOME

OVERVIEW

FEATURES

SERVICE

ABOUT US



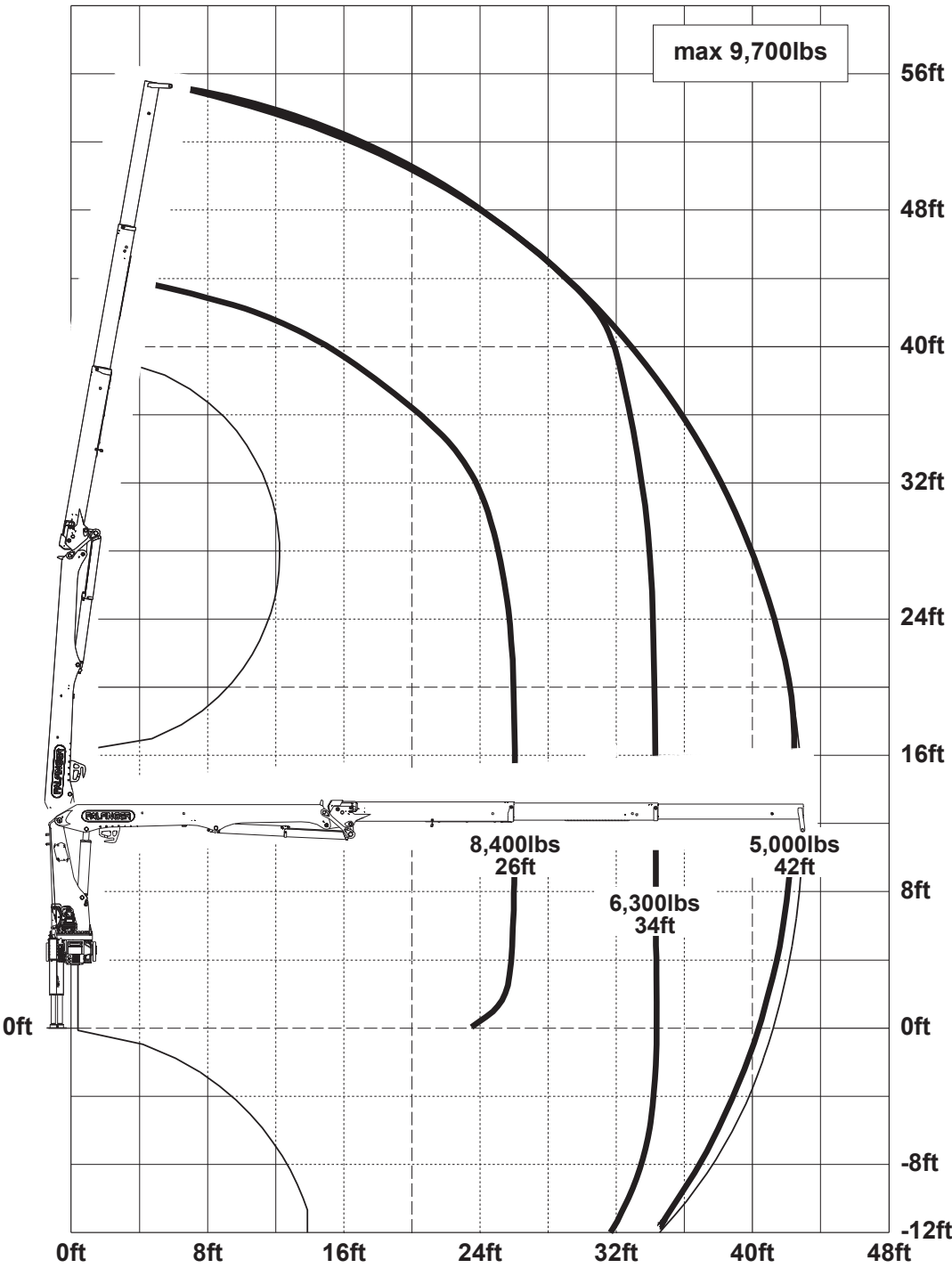
→ ENGINEERING SERVICES

Dealer installations are carried out through PALFINGER engineering services to ensure optimum layout, weight distribution and stability.

MATERIAL  
PW-SERIES

GENERAL	
MODEL	MAX. LIFTING MOMENT (FT.IBS)
PW 32001 A	194,850
PW 32001 B	174,270
PW 32001 C	159,890
PW 35001-SH A	218,230
PW 35001-SH B	197,650
PW 35001-SH C	183,270
PW 38001 B	227,180
PW 38001 C	231,430
PW 42001-SH B	256,110
PW 42001-SH C	241,640
PW 50001-SH C	253,220

PW 35001-SH A



L MAX. HORIZONTAL  
CAPACITY (IBS)

4,450 @ 42'

2,950 @ 52'

2,050 @ 61'

5,000 @ 42'

3,400 @ 52'

2,450 @ 61'

3,950 @ 52'

2,900 @ 61'

4,500 @ 52'

3,350 @ 61'

1,780 @ 76'



LIFETIME EXCELLENCE

HOME

OVERVIEW

FEATURES

SERVICE

ABOUT US



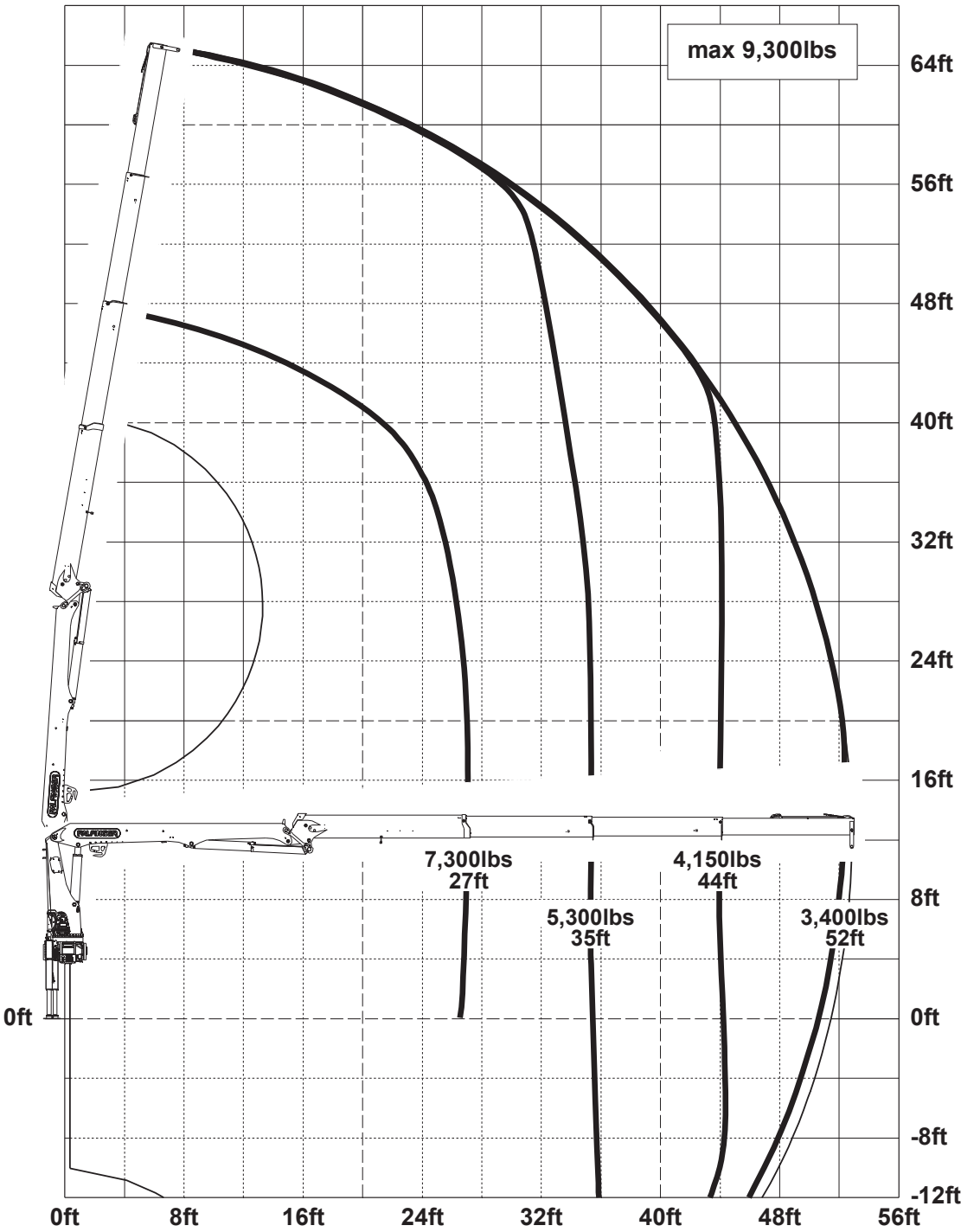
→ ENGINEERING SERVICES

Dealer installations are carried out through PALFINGER engineering services to ensure optimum layout, weight distribution and stability.

MATERIAL  
PW-SERIES

GENERAL	
MODEL	MAX. LIFTING MOMENT (FT.IBS)
PW 32001 A	194,850
PW 32001 B	174,270
PW 32001 C	159,890
PW 35001-SH A	218,230
PW 35001-SH B	197,650
PW 35001-SH C	183,270
PW 38001 B	227,180
PW 38001 C	231,430
PW 42001-SH B	256,110
PW 42001-SH C	241,640
PW 50001-SH C	253,220

PW 35001-SH B



L	MAX. HORIZONTAL CAPACITY (IBS)
	4,450 @ 42'
	2,950 @ 52'
	2,050 @ 61'
	5,000 @ 42'
	3,400 @ 52'
	2,450 @ 61'
	3,950 @ 52'
	2,900 @ 61'
	4,500 @ 52'
	3,350 @ 61'
	1,780 @ 76'



**PALFINGER**

LIFETIME EXCELLENCE

HOME

OVERVIEW

FEATURES

SERVICE

ABOUT US



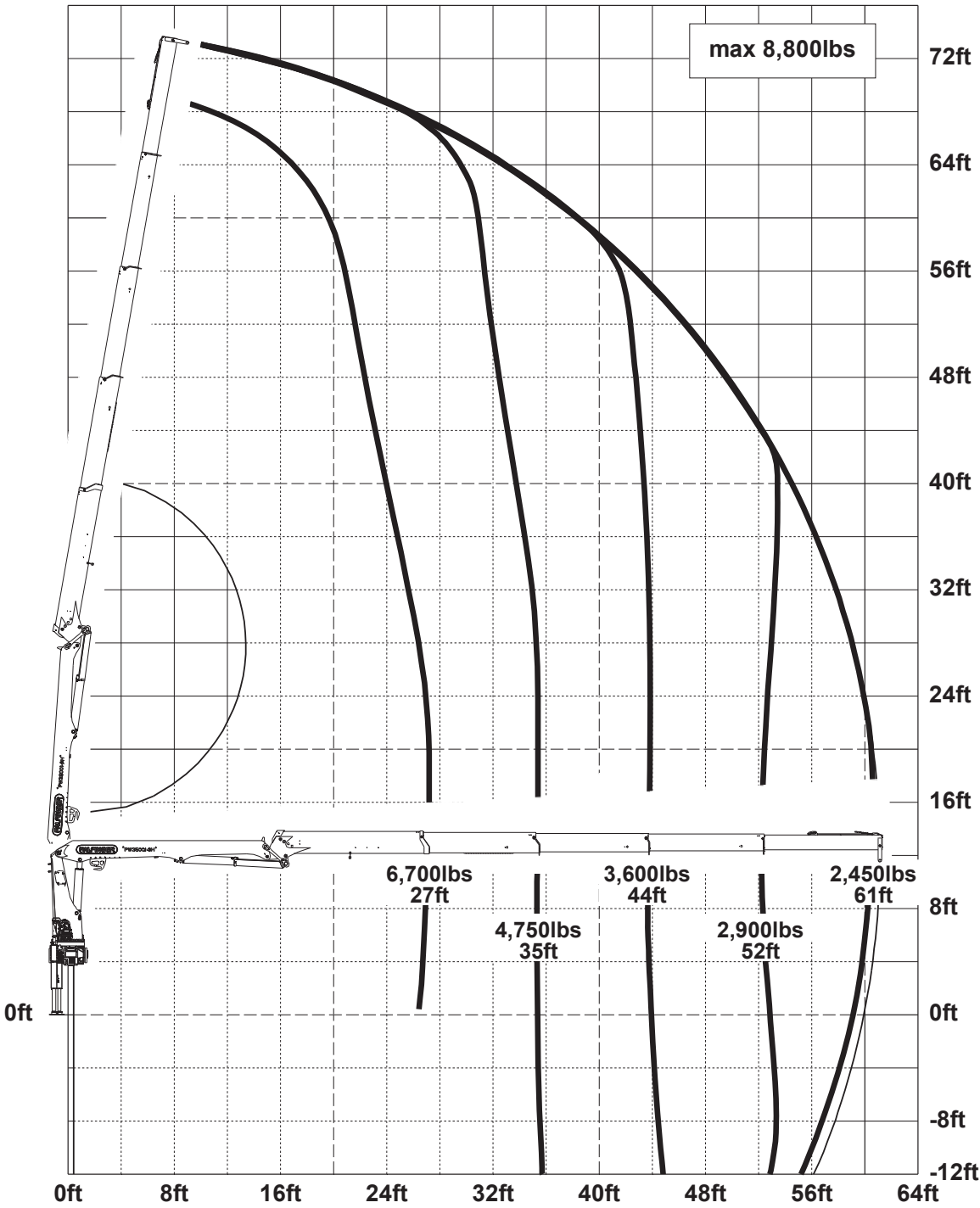
→ ENGINEERING SERVICES

Dealer installations are carried out through PALFINGER engineering services to ensure optimum layout, weight distribution and stability.

MATERIAL  
PW-SERIES

GENERAL	
MODEL	MAX. LIFTING MOMENT (FT.IBS)
PW 32001 A	194,850
PW 32001 B	174,270
PW 32001 C	159,890
PW 35001-SH A	218,230
PW 35001-SH B	197,650
PW 35001-SH C	183,270
PW 38001 B	227,180
PW 38001 C	231,430
PW 42001-SH B	256,110
PW 42001-SH C	241,640
PW 50001-SH C	253,220

PW 35001-SH C



L	MAX. HORIZONTAL CAPACITY (IBS)
	4,450 @ 42'
	2,950 @ 52'
	2,050 @ 61'
	5,000 @ 42'
	3,400 @ 52'
	2,450 @ 61'
	3,950 @ 52'
	2,900 @ 61'
	4,500 @ 52'
	3,350 @ 61'
	1,780 @ 76'





PALFINGER

LIFETIME EXCELLENCE

HOME

OVERVIEW

FEATURES

SERVICE

ABOUT US



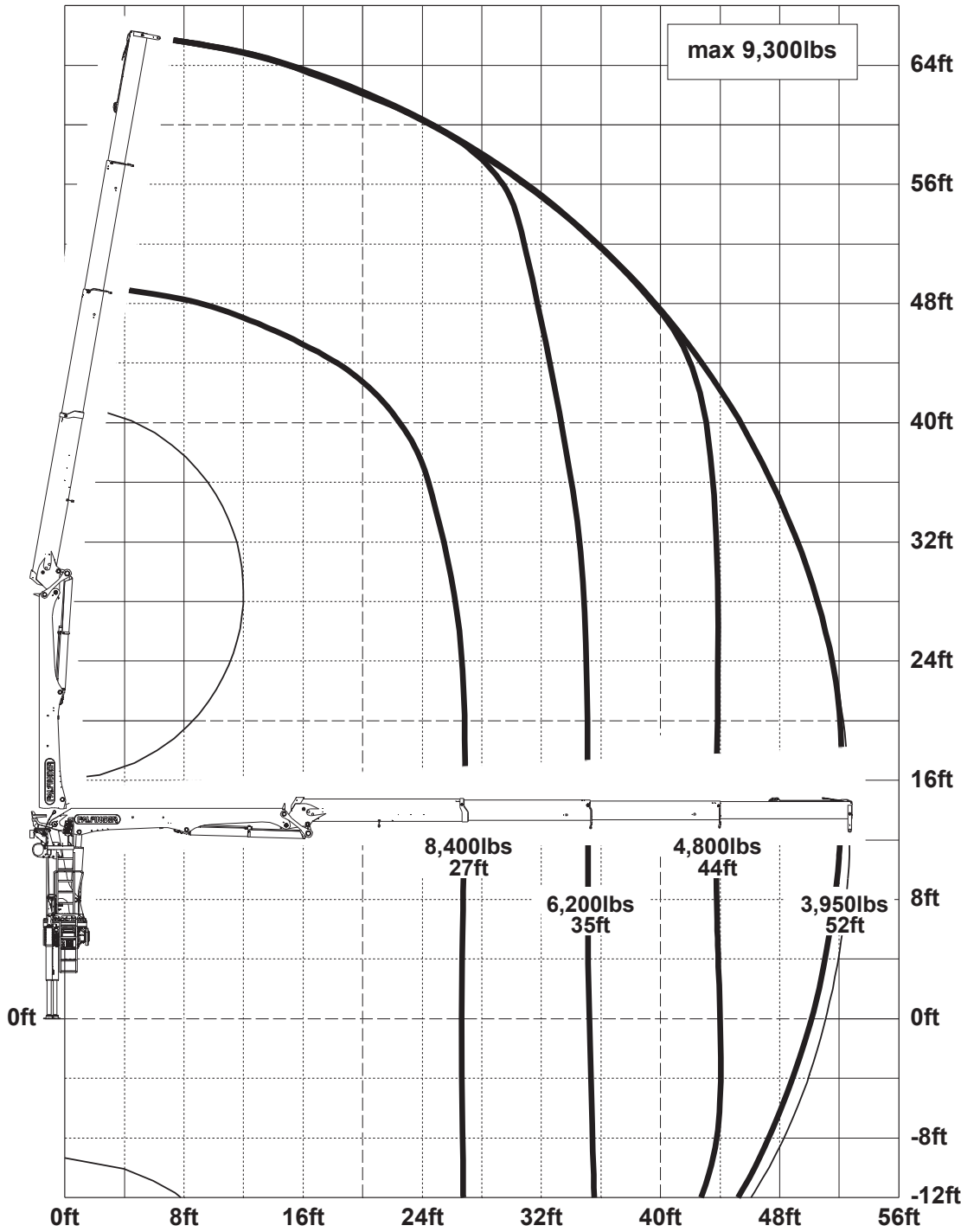
→ ENGINEERING SERVICES

Dealer installations are carried out through PALFINGER engineering services to ensure optimum layout, weight distribution and stability.

MATERIAL  
PW-SERIES

GENERAL	
MODEL	MAX. LIFTING MOMENT (FT.IBS)
PW 32001 A	194,850
PW 32001 B	174,270
PW 32001 C	159,890
PW 35001-SH A	218,230
PW 35001-SH B	197,650
PW 35001-SH C	183,270
PW 38001 B	227,180
PW 38001 C	231,430
PW 42001-SH B	256,110
PW 42001-SH C	241,640
PW 50001-SH C	253,220

PW 38001 B



L	MAX. HORIZONTAL CAPACITY (IBS)
	4,450 @ 42'
	2,950 @ 52'
	2,050 @ 61'
	5,000 @ 42'
	3,400 @ 52'
	2,450 @ 61'
	3,950 @ 52'
	2,900 @ 61'
	4,500 @ 52'
	3,350 @ 61'
	1,780 @ 76'





HOME

OVERVIEW

FEATURES

SERVICE

ABOUT US



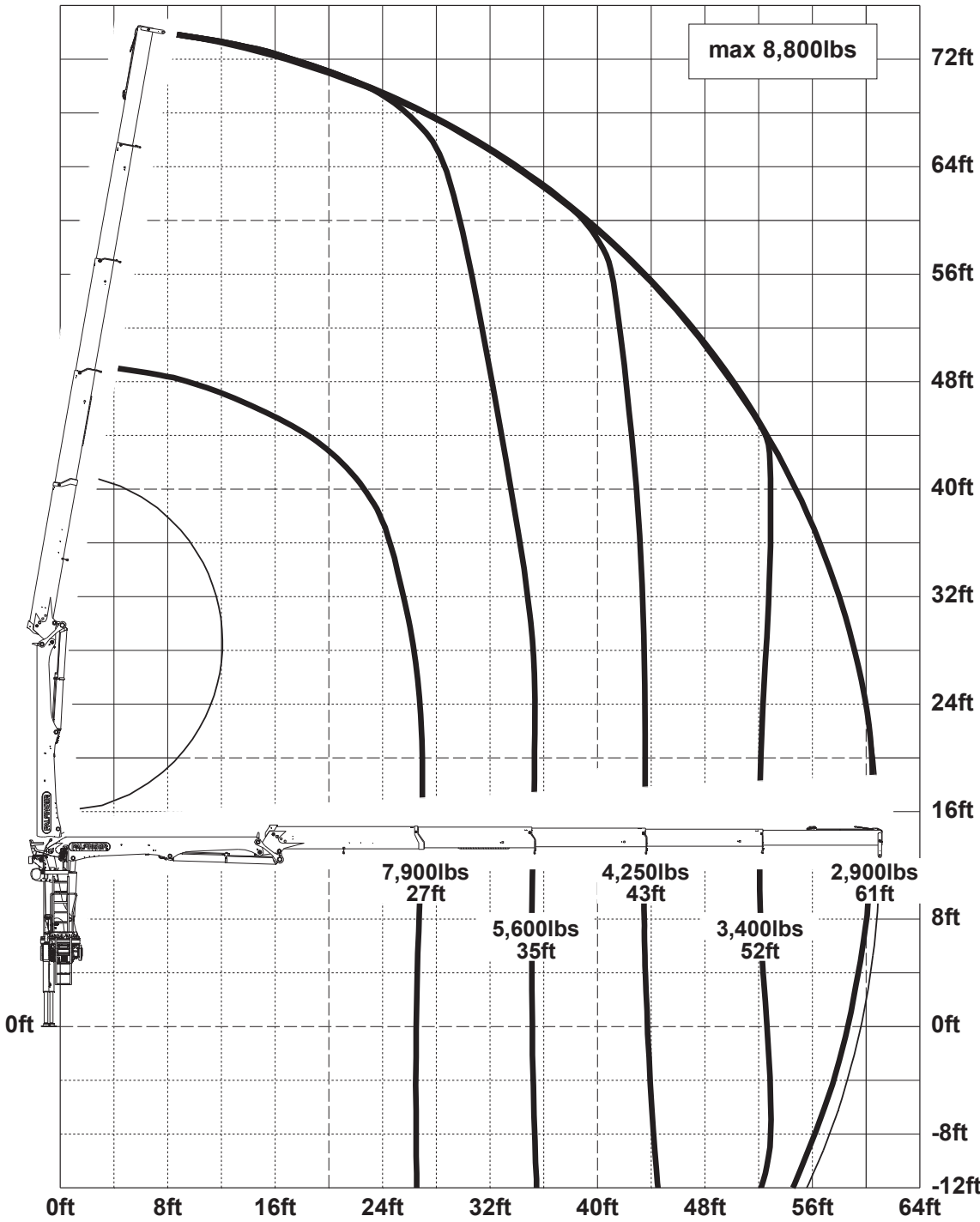
→ ENGINEERING SERVICES

Dealer installations are carried out through PALFINGER engineering services to ensure optimum layout, weight distribution and stability.

MATERIAL  
PW-SERIES

GENERAL	
MODEL	MAX. LIFTING MOMENT (FT.IBS)
PW 32001 A	194,850
PW 32001 B	174,270
PW 32001 C	159,890
PW 35001-SH A	218,230
PW 35001-SH B	197,650
PW 35001-SH C	183,270
PW 38001 B	227,180
PW 38001 C	231,430
PW 42001-SH B	256,110
PW 42001-SH C	241,640
PW 50001-SH C	253,220

PW 38001 C



L	MAX. HORIZONTAL CAPACITY (IBS)
	4,450 @ 42'
	2,950 @ 52'
	2,050 @ 61'
	5,000 @ 42'
	3,400 @ 52'
	2,450 @ 61'
	3,950 @ 52'
	2,900 @ 61'
	4,500 @ 52'
	3,350 @ 61'
	1,780 @ 76'



PALFINGER

LIFETIME EXCELLENCE

HOME

OVERVIEW

FEATURES

SERVICE

ABOUT US



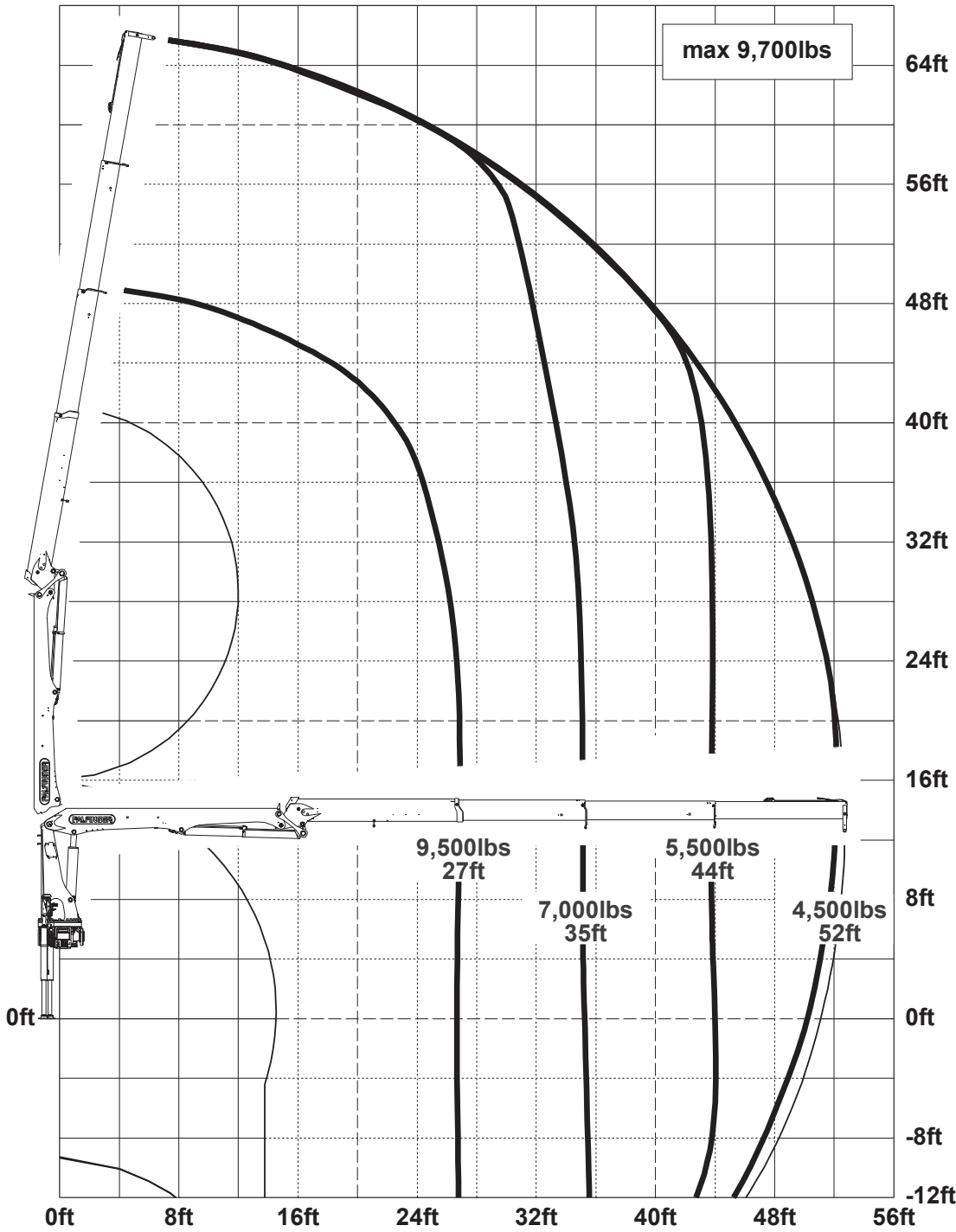
→ ENGINEERING SERVICES

Dealer installations are carried out through PALFINGER engineering services to ensure optimum layout, weight distribution and stability.

MATERIAL  
PW-SERIES

GENERAL	
MODEL	MAX. LIFTING MOMENT (FT.IBS)
PW 32001 A	194,850
PW 32001 B	174,270
PW 32001 C	159,890
PW 35001-SH A	218,230
PW 35001-SH B	197,650
PW 35001-SH C	183,270
PW 38001 B	227,180
PW 38001 C	231,430
PW 42001-SH B	256,110
PW 42001-SH C	241,640
PW 50001-SH C	253,220

PW 42001-SH B



MAX. HORIZONTAL  
CAPACITY (IBS)

4,450 @ 42'

2,950 @ 52'

2,050 @ 61'

5,000 @ 42'

3,400 @ 52'

2,450 @ 61'

3,950 @ 52'

2,900 @ 61'

4,500 @ 52'

3,350 @ 61'

1,780 @ 76'





PALFINGER

LIFETIME EXCELLENCE

HOME

OVERVIEW

FEATURES

SERVICE

ABOUT US



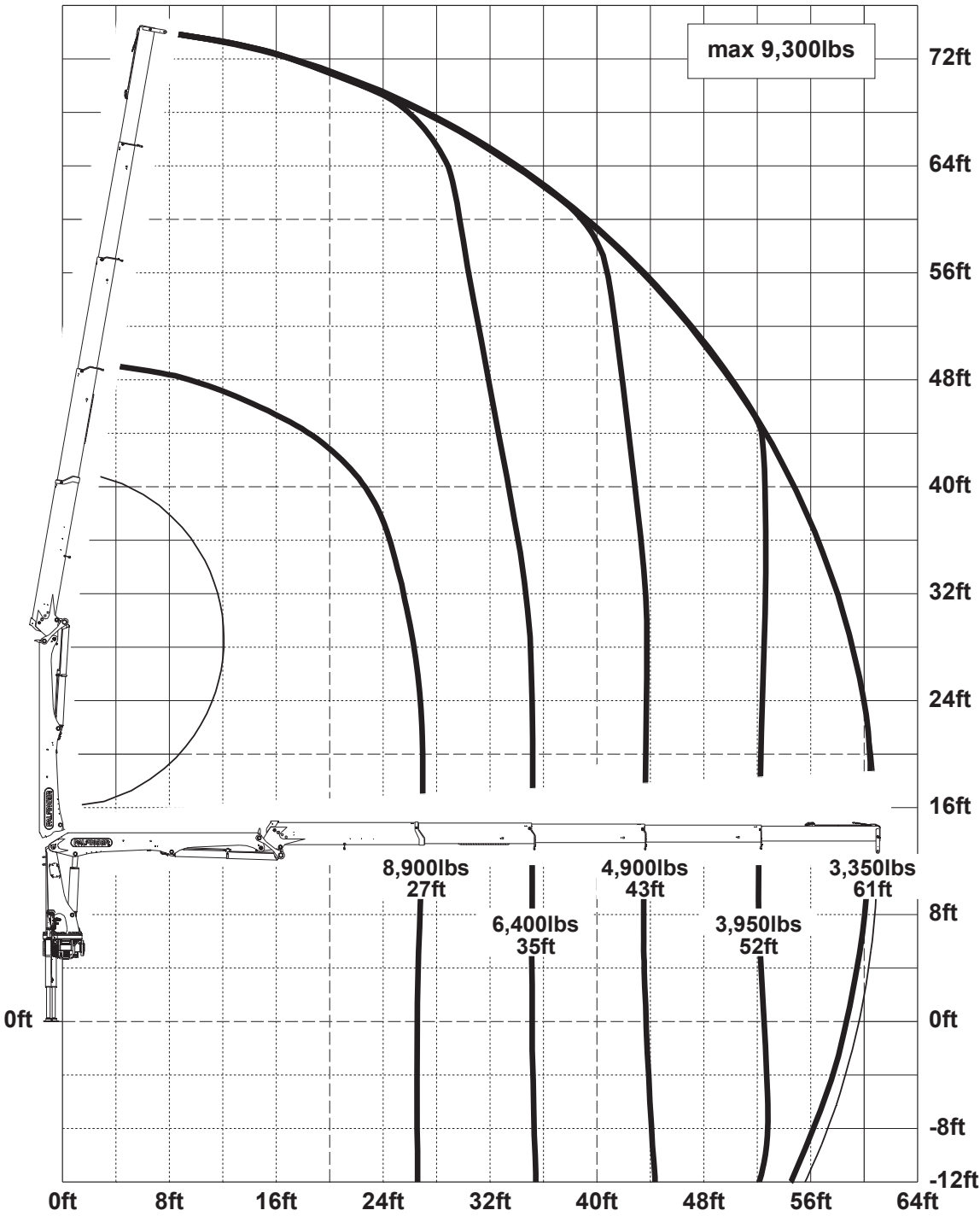
→ ENGINEERING SERVICES

Dealer installations are carried out through PALFINGER engineering services to ensure optimum layout, weight distribution and stability.

MATERIAL  
PW-SERIES

GENERAL	
MODEL	MAX. LIFTING MOMENT (FT.IBS)
PW 32001 A	194,850
PW 32001 B	174,270
PW 32001 C	159,890
PW 35001-SH A	218,230
PW 35001-SH B	197,650
PW 35001-SH C	183,270
PW 38001 B	227,180
PW 38001 C	231,430
PW 42001-SH B	256,110
PW 42001-SH C	241,640
PW 50001-SH C	253,220

PW 42001-SH C



L	MAX. HORIZONTAL CAPACITY (IBS)
	4,450 @ 42'
	2,950 @ 52'
	2,050 @ 61'
	5,000 @ 42'
	3,400 @ 52'
	2,450 @ 61'
	3,950 @ 52'
	2,900 @ 61'
	4,500 @ 52'
	3,350 @ 61'
	1,780 @ 76'





LIFETIME EXCELLENCE

HOME

OVERVIEW

FEATURES

SERVICE

ABOUT US



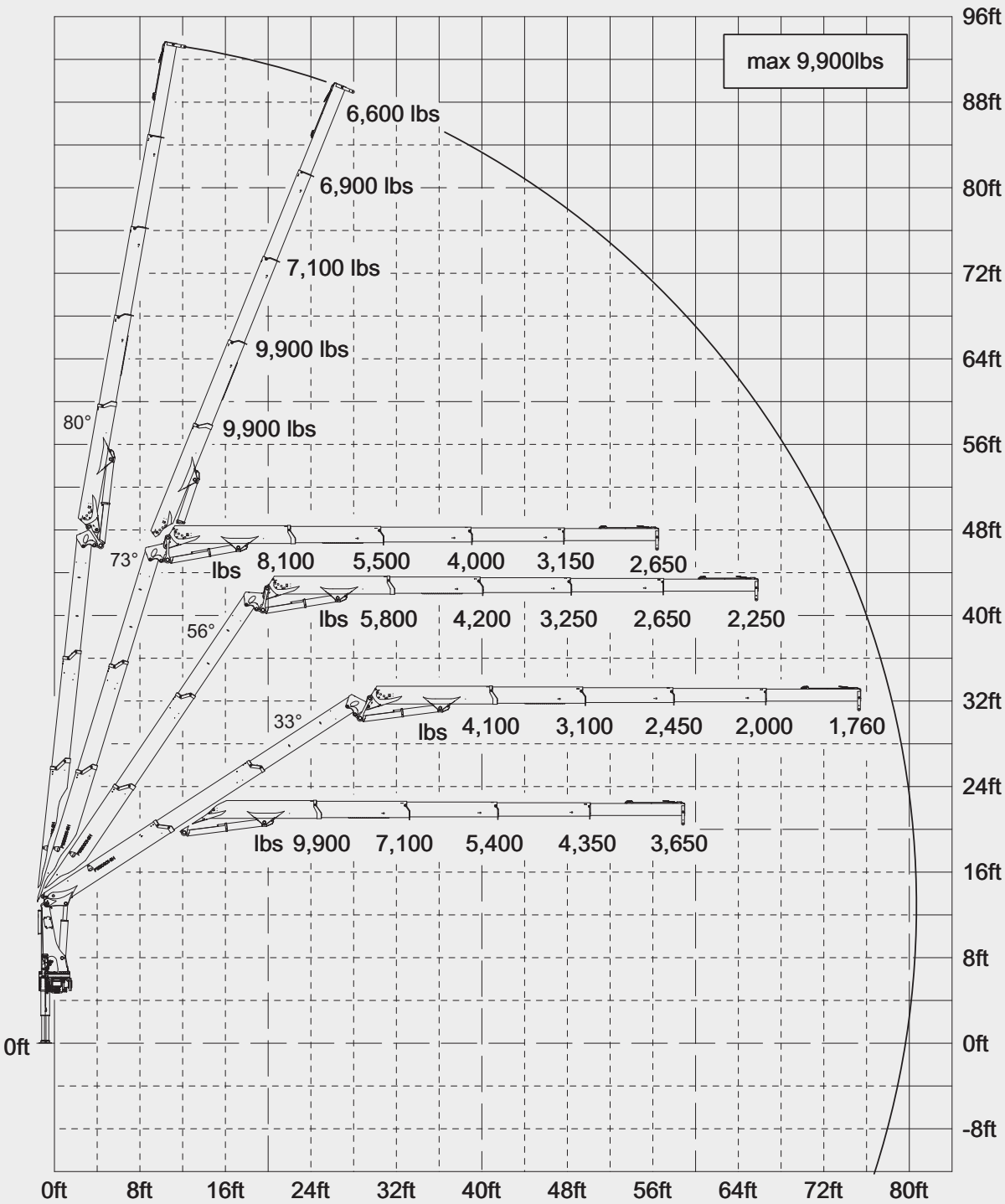
→ ENGINEERING SERVICES

Dealer installations are carried out through PALFINGER engineering services to ensure optimum layout, weight distribution and stability.

MATERIAL  
PW-SERIES

GENERAL	
MODEL	MAX. LIFTING MOMENT (FT.IBS)
PW 32001 A	194,850
PW 32001 B	174,270
PW 32001 C	159,890
PW 35001-SH A	218,230
PW 35001-SH B	197,650
PW 35001-SH C	183,270
PW 38001 B	227,180
PW 38001 C	231,430
PW 42001-SH B	256,110
PW 42001-SH C	241,640
PW 50001-SH C	253,220

PW 50001-SH C



MAX. HORIZONTAL  
CAPACITY (IBS)

4,450 @ 42'

2,950 @ 52'

2,050 @ 61'

5,000 @ 42'

3,400 @ 52'

2,450 @ 61'

3,950 @ 52'

2,900 @ 61'

4,500 @ 52'

3,350 @ 61'

1,780 @ 76'





# MATERIAL HANDLING CRANES

## PW-SERIES



GENERAL	TECHNICAL DATA	APPLICATIONS	
---------	----------------	--------------	--

**Rely on PALFINGER for a variety of material handling applications!**  
Maximize your delivery times thanks to the low dead weight of PALFINGER Material Handling Cranes, as the increased legal payloads allow you to transport more materials in each delivery.  
With every job, feel confident that your materials will be delivered with smooth and precise operations and enjoy the paybacks in productivity.





# MATERIAL HANDLING CRANES

## PW-SERIES



GENERAL	TECHNICAL DATA	APPLICATIONS
---------	----------------	--------------



**Rely on PALFINGER for a variety of material handling applications!**  
Maximize your delivery times thanks to the low dead weight of PALFINGER Material Handling Cranes, as the increased legal payloads allow you to transport more materials in each delivery.  
With every job, feel confident that your materials will be delivered with smooth and precise operations and enjoy the paybacks in productivity.



# MATERIAL HANDLING CRANES

## PW-SERIES



GENERAL	TECHNICAL DATA	APPLICATIONS
---------	----------------	--------------



**Rely on PALFINGER for a variety of material handling applications!**  
Maximize your delivery times thanks to the low dead weight of PALFINGER Material Handling Cranes, as the increased legal payloads allow you to transport more materials in each delivery.  
With every job, feel confident that your materials will be delivered with smooth and precise operations and enjoy the paybacks in productivity.



# MATERIAL HANDLING CRANES

## PW-SERIES



GENERAL	TECHNICAL DATA	APPLICATIONS	
---------	----------------	--------------	--



**Rely on PALFINGER for a variety of material handling applications!**  
Maximize your delivery times thanks to the low dead weight of PALFINGER Material Handling Cranes, as the increased legal payloads allow you to transport more materials in each delivery.  
With every job, feel confident that your materials will be delivered with smooth and precise operations and enjoy the paybacks in productivity.





# MATERIAL HANDLING CRANES

## PW-SERIES



GENERAL	TECHNICAL DATA	APPLICATIONS	
---------	----------------	--------------	--



**Rely on PALFINGER for a variety of material handling applications!**  
Maximize your delivery times thanks to the low dead weight of PALFINGER Material Handling Cranes, as the increased legal payloads allow you to transport more materials in each delivery.  
With every job, feel confident that your materials will be delivered with smooth and precise operations and enjoy the paybacks in productivity.



**PALFINGER**

LIFETIME EXCELLENCE

# MATERIAL HANDLING CRANES

## PW-SERIES



GENERAL

TECHNICAL DATA

APPLICATIONS



### **Rely on PALFINGER for a variety of material handling applications!**

Maximize your delivery times thanks to the low dead weight of PALFINGER Material Handling Cranes, as the increased legal payloads allow you to transport more materials in each delivery.

With every job, feel confident that your materials will be delivered with smooth and precise operations and enjoy the paybacks in productivity.



# MATERIAL HANDLING CRANES

## PW-SERIES



GENERAL	TECHNICAL DATA	APPLICATIONS
---------	----------------	--------------



**Rely on PALFINGER for a variety of material handling applications!**  
Maximize your delivery times thanks to the low dead weight of PALFINGER Material Handling Cranes, as the increased legal payloads allow you to transport more materials in each delivery.  
With every job, feel confident that your materials will be delivered with smooth and precise operations and enjoy the paybacks in productivity.





# MATERIAL HANDLING CRANES

## PW-SERIES



GENERAL	TECHNICAL DATA	APPLICATIONS	
---------	----------------	--------------	--



**Rely on PALFINGER for a variety of material handling applications!**  
Maximize your delivery times thanks to the low dead weight of PALFINGER Material Handling Cranes, as the increased legal payloads allow you to transport more materials in each delivery.  
With every job, feel confident that your materials will be delivered with smooth and precise operations and enjoy the paybacks in productivity.



# MATERIAL HANDLING CRANES

## PW-SERIES



GENERAL	TECHNICAL DATA	APPLICATIONS	
---------	----------------	--------------	--



**Rely on PALFINGER for a variety of material handling applications!**  
Maximize your delivery times thanks to the low dead weight of PALFINGER Material Handling Cranes, as the increased legal payloads allow you to transport more materials in each delivery.  
With every job, feel confident that your materials will be delivered with smooth and precise operations and enjoy the paybacks in productivity.



# MATERIAL HANDLING CRANES

## PW-SERIES



GENERAL	TECHNICAL DATA	APPLICATIONS
---------	----------------	--------------



**Rely on PALFINGER for a variety of material handling applications!**  
Maximize your delivery times thanks to the low dead weight of PALFINGER Material Handling Cranes, as the increased legal payloads allow you to transport more materials in each delivery.  
With every job, feel confident that your materials will be delivered with smooth and precise operations and enjoy the paybacks in productivity.





# MATERIAL HANDLING CRANES

## PW-SERIES



GENERAL	TECHNICAL DATA	APPLICATIONS
---------	----------------	--------------



**Rely on PALFINGER for a variety of material handling applications!**  
Maximize your delivery times thanks to the low dead weight of PALFINGER Material Handling Cranes, as the increased legal payloads allow you to transport more materials in each delivery.  
With every job, feel confident that your materials will be delivered with smooth and precise operations and enjoy the paybacks in productivity.



# MATERIAL HANDLING CRANES

## PW-SERIES



GENERAL	TECHNICAL DATA	APPLICATIONS	
---------	----------------	--------------	--



**Rely on PALFINGER for a variety of material handling applications!**  
Maximize your delivery times thanks to the low dead weight of PALFINGER Material Handling Cranes, as the increased legal payloads allow you to transport more materials in each delivery.  
With every job, feel confident that your materials will be delivered with smooth and precise operations and enjoy the paybacks in productivity.



# MATERIAL HANDLING CRANES

## PW-SERIES



GENERAL

TECHNICAL DATA

APPLICATIONS



### **Rely on PALFINGER for a variety of material handling applications!**

Maximize your delivery times thanks to the low dead weight of PALFINGER Material Handling Cranes, as the increased legal payloads allow you to transport more materials in each delivery.

With every job, feel confident that your materials will be delivered with smooth and precise operations and enjoy the paybacks in productivity.





HOME

OVERVIEW

FEATURES

SERVICE

ABOUT US

# MATERIAL HANDLING PW-SERIES

GENERAL

TECHNICAL



→ SEE OUR FANS

**Rely on PALFINGER for a variety of material handling tasks.** Maximize your delivery times thanks to the flexibility of our Material Handling Cranes, as the increased reach allows you to transport more materials in each delivery. With every job, feel confident that your operations are safe and precise operations and enjoy the peace of mind that comes with PALFINGER.



## “WITH PALFINGER, I CAN RUN MULTIPLE FUNCTIONS AT ONCE ...

...with precision and control. With other cranes, I could not boom out, rotate and lift at the same time without the crane slowing down. PALFINGER cranes are faster and smoother – very impressive machines!”

Jason, Crane Operator, Eikenhout  
Grand Rapids, MI







# MATERIAL HANDLING CRANES PW-SERIES





LIFETIME EXCELLENCE

HOME

OVERVIEW

FEATURES

SE

AE

# MATERIAL HANDLING CRANES PW-SERIES



LOW-MAINTENANCE  
EXTENSION SYSTEM



POWER LINK

Paltronic  
**50** Paltronic  
contro **150**  
controlled

## PALTRONIC 50 & PALTRONIC 150

- ➔ Latest control electronics
- ➔ Most important safety and comfort functions, offering smooth control, safe operation with overload cut-off and capacity display

**AOS**  
Active Oscillation Suppression  
inside

## AOS

- ➔ ACTIVE OSCILLATION SUPPRESSION
- ➔ Patented PALFINGER System
- ➔ Dampens the boom system of the crane
- ➔ Compensating for vibration and shock
- ➔ Significant increase in safety

**RRC**  
Radio Remote Control  
operated

## RRC

- ➔ PALFINGER radio remote control
- ➔ Equipped with linear levers
- ➔ Providing the greatest possible comfort of the operator
- ➔ PALTRONIC 50 cranes with LED capacity display
- ➔ PALTRONIC 150 cranes with LCD capacity display

**KTL**  
protected

## KTL

- ➔ Innovative technology for surface coating
- ➔ Foundation for durable and long-lasting surface protection
- ➔ PALFINGER Quality Standard - usually only found in the automobile industry

Paltronic  
**50**  
controlled

Paltronic  
**150**  
controlled

**AOS**  
Active Oscillation Suppression  
inside

**RRC**  
Radio Remote Control  
operated

**KTL**  
protected





LIFETIME EXCELLENCE

HOME

OVERVIEW

FEATURES

SERVICE

ABOUT US

# MATERIAL HANDLING CRANES PW-SERIES



LOW-MAINTENANCE  
EXTENSION SYSTEM



POWER LINK



TRANSPORT SWITCHES



TURNTABLE SLEWING SYSTEM



STABILIZER LIGHTS

Paltronic  
50  
controlled

Paltronic  
150  
controlled

AOS  
Active Oscillation Suppression  
inside

RRC  
Radio Remote Control  
operated

KTL  
protected

+



## LOW-MAINTENANCE EXTENSION SYSTEM

REDUCES SERVICE TIME

With sliding elements made of synthetic material and the high-quality KTL coating, this boom system significantly simplifies service performed by the operator. This saves time and money – and protects the environment.





LIFETIME EXCELLENCE

HOME

OVERVIEW

FEATURES

SERVICE

ABOUT US

# MATERIAL HANDLING CRANES PW-SERIES



+ POWER LINK

+ LOW-MAINTENANCE  
EXTENSION SYSTEM

TRANSPORT SWITCHES +

+ TURNTABLE SLEWING SYSTEM

STABILIZER LIGHTS +

Paltronic  
50  
controlled

Paltronic  
150  
controlled

AOS  
Active Oscillation Suppression  
inside

RRC  
Radio Remote Control  
operated

KTLL  
protected

+



## POWER LINK

The linkage system is a special connection between the knuckle boom and main boom. It increases the lifting power of the crane in the most important boom positions and maintains a constant lifting speed.





LIFETIME EXCELLENCE

HOME

OVERVIEW

FEATURES

SERVICE

ABOUT US

# MATERIAL HANDLING CRANES PW-SERIES



+ POWER LINK

+ LOW-MAINTENANCE  
EXTENSION SYSTEM

TRANSPORT SWITCHES +

+ TURNTABLE SLEWING SYSTEM

STABILIZER LIGHTS +

Paltronic  
50  
controlled

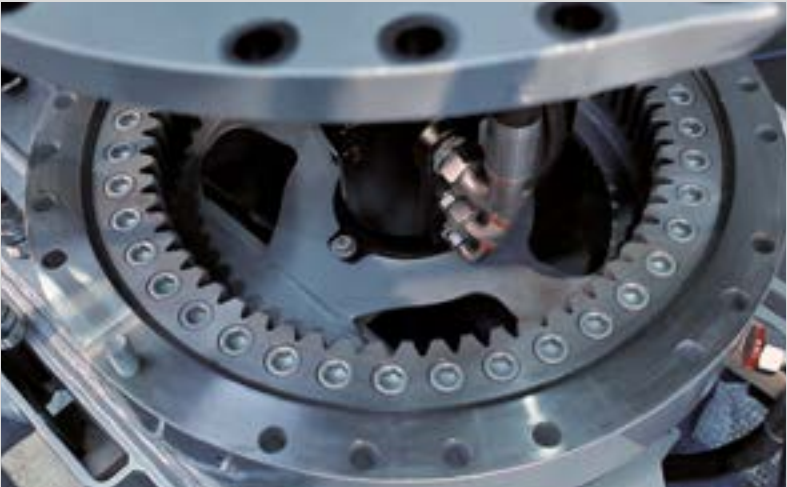
Paltronic  
150  
controlled

AOS  
Active Oscillation Suppression  
inside

RRC  
Radio Remote Control  
operated

KTLL  
protected

+



**TURNTABLE  
SLEWING SYSTEM**

The PALFINGER Slewing System offers superior slewing performance. The crane is rotated or ‘slewed’ using dual drive hydraulic motors, rather than a rack and pinion. Similar to excavators, the turntable slewing systems come standard with dual drive hydraulic motors offering smooth and powerful control.



LIFETIME EXCELLENCE

HOME

OVERVIEW

FEATURES

SERVICE

ABOUT US

# MATERIAL HANDLING CRANES PW-SERIES



+ POWER LINK

+ LOW-MAINTENANCE  
EXTENSION SYSTEM

TRANSPORT SWITCHES +

+ TURNTABLE SLEWING SYSTEM

STABILIZER LIGHTS +



## WARNING LIGHTS ON THE STABILIZERS

The LED warning lights on the stabilizer cylinders are used for better visibility of the outrigger position and the stabilizer cylinder.  
When the stabilizers are visible, safety is increased for the operator, pedestrians and surrounding traffic.

Paltronic  
50  
controlled

Paltronic  
150  
controlled

AOS  
Active Oscillation Suppression  
inside

RRC  
Radio Remote Control  
operated

KTLL  
protected

+





- HOME
- OVERVIEW
- FEATURES
- SERVICE
- ABOUT US

# MATERIAL HANDLING CRANES PW-SERIES



STABILIZER LIGHTS

+

TRANSPORT SWITCHES

+

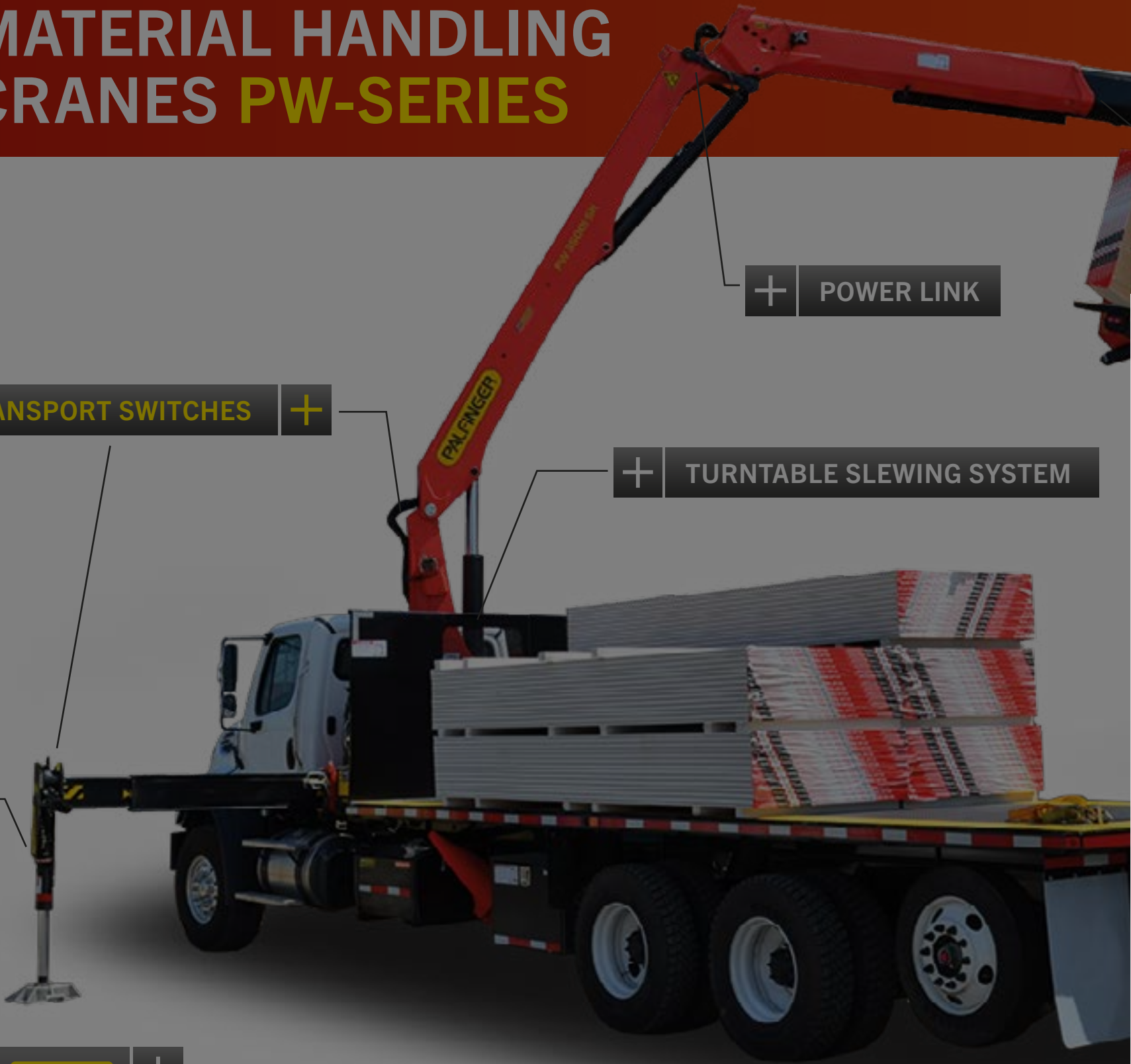
TURNTABLE SLEWING SYSTEM

+

POWER LINK

+

LOW-MAINTENANCE EXTENSION SYSTEM



Paltronic 50 controlled

Paltronic 150 controlled

AOS Active Oscillation Suppression inside

RRC Radio Remote Control operated

KTLL protected

+



## TRANSPORT SWITCHES

Factory-mounted switches to indicate transport positions offer well-protected mounting locations and a clean appearance.

- ➔ Boom in transport position switch. (TRAN2)
- ➔ Outriggers and stabilizers retracted. (ABSTW)



**PALFINGER**

LIFETIME EXCELLENCE

# MATERIAL HANDLING CRANES

## PW-SERIES



SERVICE NETWORK

SPARE PARTS

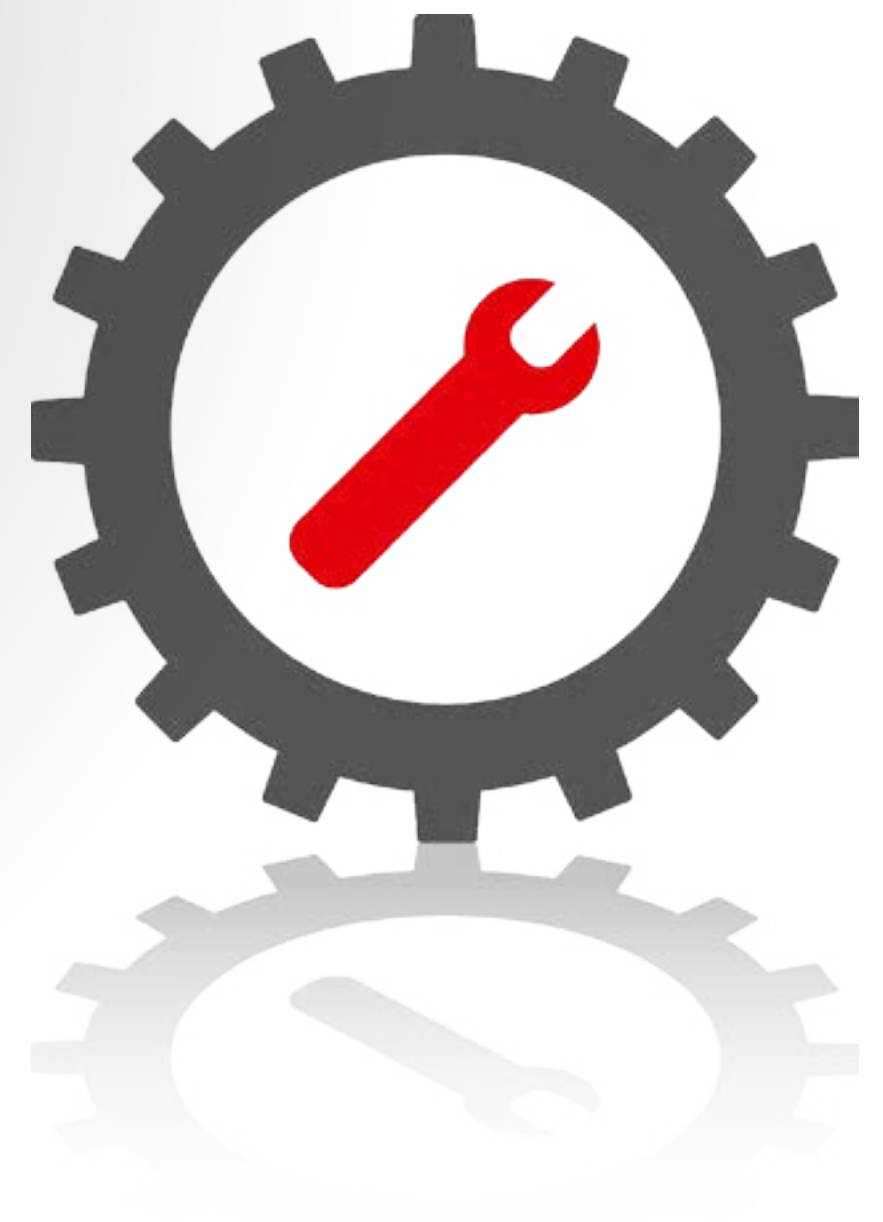
WARRANTY

Your PALFINGER Crane will be a strong partner for all of your Material Handling needs. Enjoy the pay backs of increased productivity and maximized delivery times while experiencing minimal downtime for your business.

Should you encounter a problem - rely on the expertise and experience of our factory trained service network. Count on PALFINGER - we will put you back on the job.

### RELIABILITY MEANS:

- ➔ After sales and service support
- ➔ Experienced service staff
- ➔ Service training at PALFINGER University
- ➔ Overnight parts delivery (within 24 h)
- ➔ Warranty programs







# MATERIAL HANDLING CRANES

## PW-SERIES



SERVICE NETWORK

SPARE PARTS

WARRANTY

Ease of service and low maintenance on equipment is important in the material handling industry. PALFINGER has a strong and growing service network across North America, with over 50 Service partners specializing in PALFINGER PW-Cranes.





# MATERIAL HANDLING CRANES

## PW-SERIES



SERVICE NETWORK

SPARE PARTS

WARRANTY

We know that your business demands more than just top-quality products and that is why PALFINGER parts are your best choice for performance and reliability. We will provide you with genuine PALFINGER spare parts and components that will ensure long life and low maintenance costs for your PALFINGER equipment.

Your local PALFINGER dealer / distributor is the first line of customer parts service. As a company, PALFINGER is dedicated to keeping our dealers equipped with access to a large inventory of spare parts and experienced parts staff.





# MATERIAL HANDLING CRANES

## PW-SERIES



SERVICE NETWORK	SPARE PARTS	WARRANTY	
-----------------	-------------	----------	--

PALFINGER cranes are quality products.  
We guarantee maximum cost-effectiveness through a comprehensive warranty plan.

**MORE EFFICIENCY IN USE**

- ➔ 12 months full warranty on all cranes
- ➔ 24 months warranty on radio remote controls
- ➔ 36 months warranty on all load-bearing parts of cranes that work in hook operation (24 months in grab operation)

**EXTENDED WARRANTY**

- ➔ Warranty extension up to 24 months full warranty possible
- ➔ Warranty extension up to 36 months full warranty possible

Contact your PALFINGER representative to see our full warranty policy for details and limitations.







**PALFINGER**

LIFETIME EXCELLENCE

# PALFINGER NORTH AMERICA GROUP



LIFETIME EXCELLENCE

SALES NETWORK

MANUFACTURING

EXPERTISE

EXCELLENCE  
EFFICIENCY

SAFETY

## A STRONG GLOBAL PARTNER - YOU CAN RELY ON

- Founded in 1932
- Leading international manufacturer of innovative lifting solutions
- Over 9,100 employees world-wide
- Comprised of 68 companies in 25 countries
- More than 200 independent general importers - in over 130 countries on all continents
- Market-ready solutions

EXCELLENCE  
RELIABILITY

PERFORMANCE

SERVICE

EXCELLENCE  
INNOVATION

SUPPORT





# PALFINGER NORTH AMERICA GROUP



LIFETIME EXCELLENCE

SALES NETWORK

MANUFACTURING



## TO US, “LIFETIME EXCELLENCE” MEANS SETTING TOP PERFORMANCE AS A MINIMUM REQUIREMENT.

LIFETIME EXCELLENCE is our promise. Our core message. Our brand essence. To our customers, it means top performance without compromise. The most cost-effective, reliable and innovative lifting solutions in a global network of expert service partners – for the entire product lifetime.

PLAY VIDEO



LIFETIME EXCELLENCE

# PALFINGER NORTH AMERICA GROUP



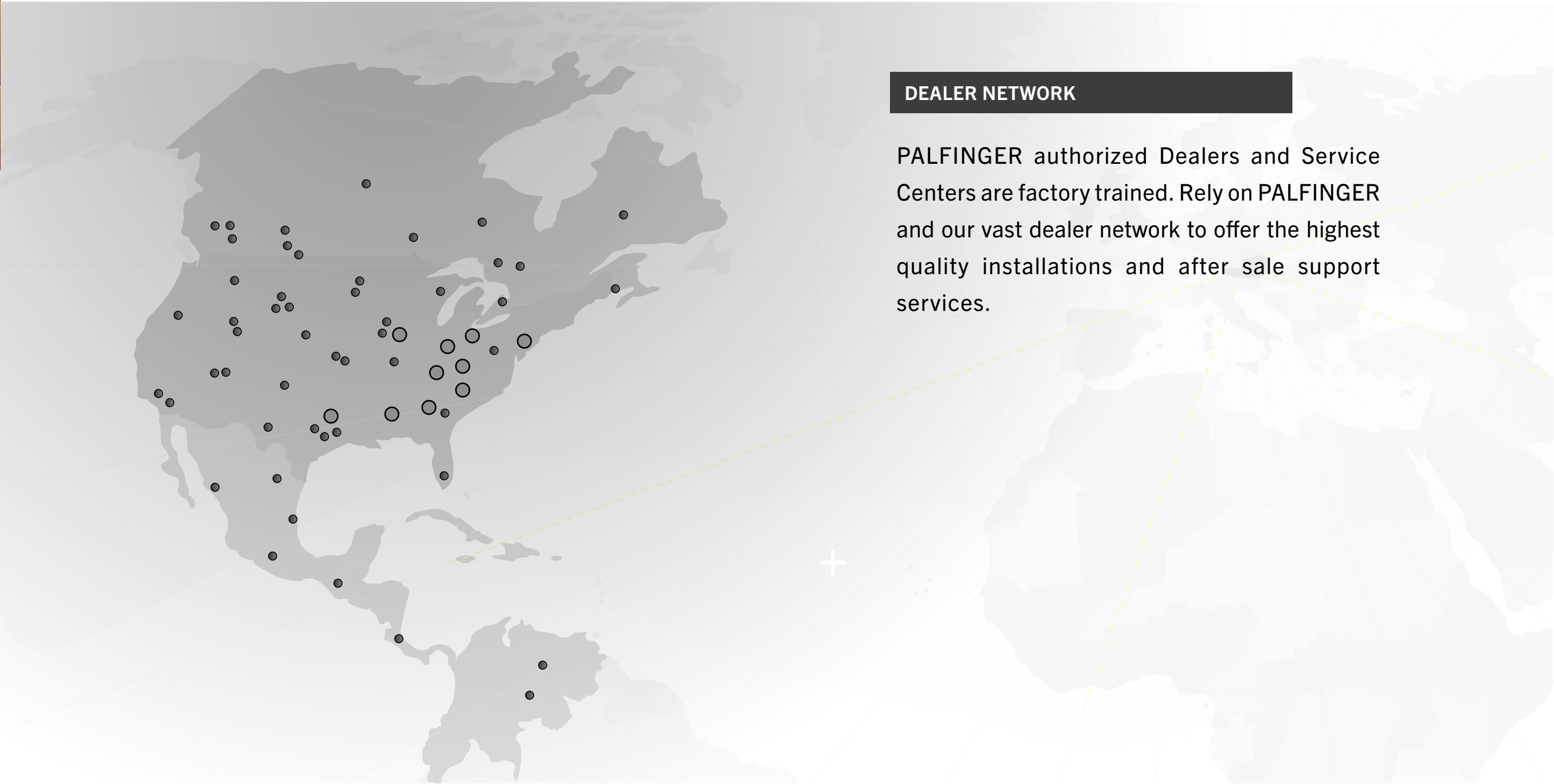
LIFETIME EXCELLENCE

SALES NETWORK

MANUFACTURING

## DEALER NETWORK

PALFINGER authorized Dealers and Service Centers are factory trained. Rely on PALFINGER and our vast dealer network to offer the highest quality installations and after sale support services.





LIFETIME EXCELLENCE

# PALFINGER NORTH AMERICA GROUP



LIFETIME EXCELLENCE

SALES NETWORK

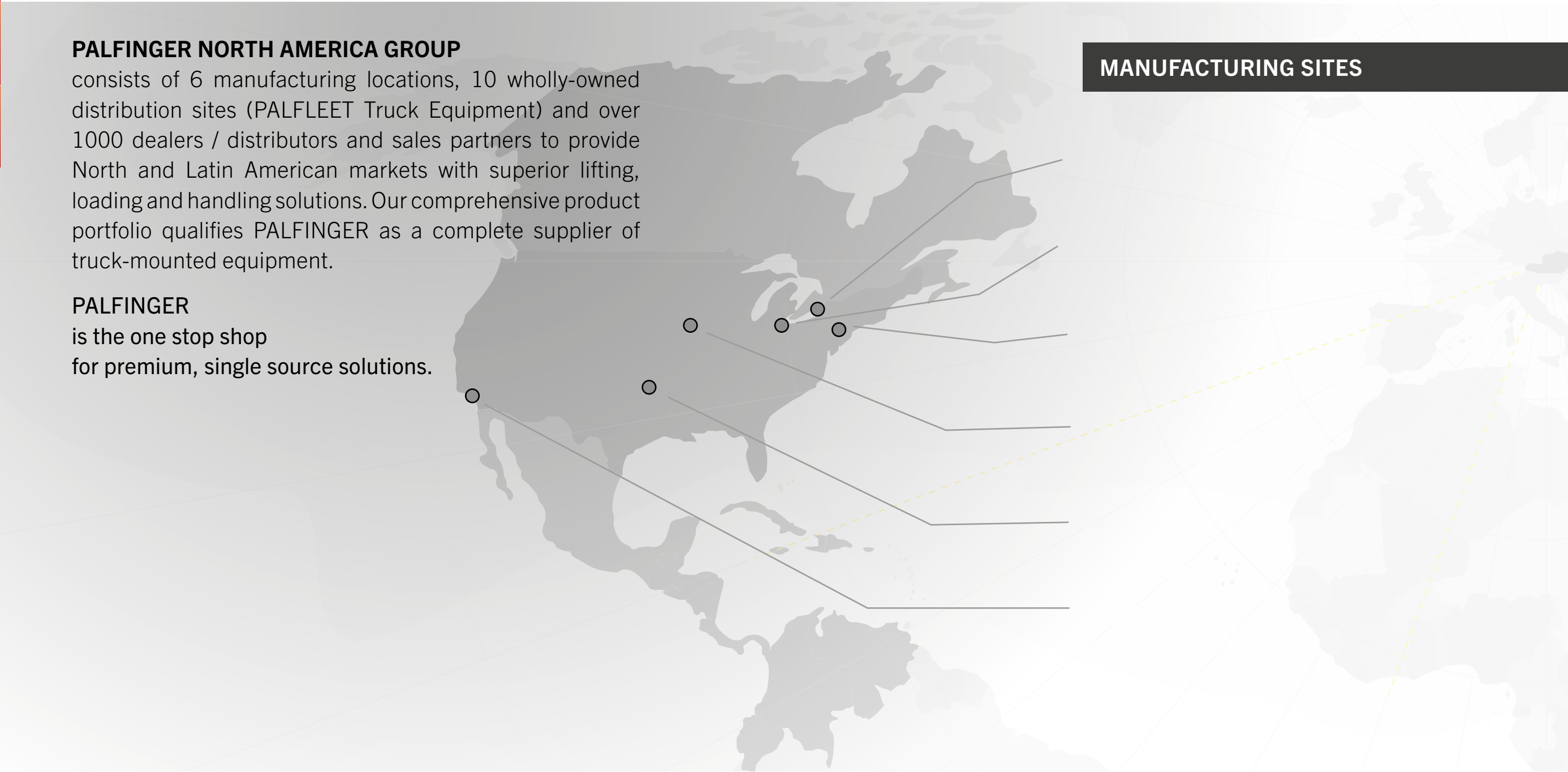
MANUFACTURING

## PALFINGER NORTH AMERICA GROUP

consists of 6 manufacturing locations, 10 wholly-owned distribution sites (PALFLEET Truck Equipment) and over 1000 dealers / distributors and sales partners to provide North and Latin American markets with superior lifting, loading and handling solutions. Our comprehensive product portfolio qualifies PALFINGER as a complete supplier of truck-mounted equipment.

PALFINGER  
is the one stop shop  
for premium, single source solutions.

## MANUFACTURING SITES





LIFETIME EXCELLENCE

HOME

OVERVIEW

FEATURES

SERVICE

ABOUT US



**PALFINGER NORTH AMERICA**  
NIAGARA FALLS, CANADA

A market leader in the design and manufacturing of knuckle boom cranes, Palfinger North America began in Niagara Falls, Canada, where a crane sales and service facility was established in 1989. Steady growth allowed for facility expansions to accommodate Crane assembly and improved service and spare parts delivery (2002-2005), in addition to a new testing hall and increased facility space (2008). The product portfolio has expanded to include PALFINGER truck-mounted forklifts, EPSILON forestry / recycling loaders and aerial work platforms.

- Facility highlights include:
- ➔ Crane assembly
  - ➔ Spare parts center



MANUFACTURING

MANUFACTURING SITES

+ NIAGARA FALLS, ON

+ TIFFIN, OH

+ TRENTON, NJ

+ COUNCIL BLUFFS, IA

+ OKLAHOMA CITY, OK

+ CERRITOS, CA





**PALFINGER**

LIFETIME EXCELLENCE

HOME

OVERVIEW

FEATURES

SERVICE

ABOUT US



**PALFINGER NORTH AMERICA**  
TIFFIN, OH

Through the acquisition of Tiffin Loader Crane in 2000, Palfinger North America opened a sales distribution center in Tiffin, OH, to strengthen its presence in the US market. In 2006, an assembly line was established here for PALFINGER truck-mounted forklifts.

- Facility highlights include:
- ➔ PALFINGER University
  - ➔ Headquarters for PalFleet Truck Equipment



MANUFACTURING

MANUFACTURING SITES

- + NIAGARA FALLS, ON
- + TIFFIN, OH
- + TRENTON, NJ
- + COUNCIL BLUFFS, IA
- + OKLAHOMA CITY, OK
- + CERRITOS, CA



**PALFINGER**

LIFETIME EXCELLENCE

HOME

OVERVIEW

FEATURES

SERVICE

ABOUT US



**PALFINGER AMERICAN ROLL-OFF  
EAST COAST HUB, TRENTON, NJ**

Established in 1972, Palfinger American Roll-Off (PARO) became a member of the PALFINGER North America Group in 2009. With manufacturing operations located in Trenton, NJ, PARO offers a range of container handling solutions including cable roll-off hoists and the PALFINGER Hooklift brand. The hub also provides installation, service and warehousing for other PALFINGER products and is a location for PALFINGER University.

Facility highlights include:

- ➔ East Coast sales, distribution and service for PALFINGER Liftgates
- ➔ Sales and service operations for PalFleet Trenton



MANUFACTURING

MANUFACTURING SITES

- + NIAGARA FALLS, ON
- + TIFFIN, OH
- + **TRENTON, NJ**
- + COUNCIL BLUFFS, IA
- + OKLAHOMA CITY, OK
- + CERRITOS, CA



PALFINGER

LIFETIME EXCELLENCE

HOME

OVERVIEW

FEATURES

SERVICE

ABOUT US



OMAHA STANDARD PALFINGER  
COUNCIL BLUFFS, IA

Located in Council Bluffs, IA, Omaha Standard was established in 1926 and became a member of the PALFINGER North America Group in 2008. Setting the industry standard for more than 80 years, Omaha Standard PALFINGER (OSP) is a leading manufacturer of truck bodies and work truck equipment, including: service bodies, service cranes, PAL Pro Mechanic Trucks, air compressors, pick-up lifts, telescopic / scissor hoists and platforms. OSP offers one of the most comprehensive product portfolios available from one supplier.

- Facility highlights include:
- ➔ Environmentally-friendly e-coat paint facility
  - ➔ Manufacturing location for PALFINGER Liftgates



MANUFACTURING

MANUFACTURING SITES

- + NIAGARA FALLS, ON
- + TIFFIN, OH
- + TRENTON, NJ
- + COUNCIL BLUFFS, IA
- + OKLAHOMA CITY, OK
- + CERRITOS, CA





LIFETIME EXCELLENCE

HOME

OVERVIEW

FEATURES

SERVICE

ABOUT US

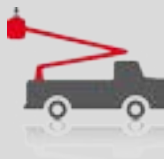


**ETI EQUIPMENT TECHNOLOGY, LLC**  
OKLAHOMA CITY, OK

A PALFINGER company since 2010, ETI is a leading manufacturer of aerial lift trucks (bucket trucks), mobile service cranes and custom bodies designed specifically for telecommunications, electrical utility, energy, industrial and other professionals. ETI operates on a direct sale basis in the United States and operates an export division for products sold throughout the world. Since founding in 1991, ETI has become the leader in providing customer service solutions thanks to their one driving goal: to make sure that you can depend on ETI.

Facility highlights include:

- ➔ 300 manufacturing, engineering and service professionals
- ➔ Fiberglass boom manufacturing



MANUFACTURING

MANUFACTURING SITES

- + NIAGARA FALLS, ON
- + TIFFIN, OH
- + TRENTON, NJ
- + COUNCIL BLUFFS, IA
- + OKLAHOMA CITY, OK
- + CERRITOS, CA



**PALFINGER**

LIFETIME EXCELLENCE

HOME

OVERVIEW

FEATURES

SERVICE

ABOUT US



**PALFINGER LIFTGATES**  
WEST COAST HUB, CERRITOS, CA

Offering a range of leading hydraulic liftgates, PALFINGER Liftgates entered the North American market under the Interlift brand in 1993 and joined the PALFINGER North America Group in 2007. With manufacturing operations located in Cerritos, CA, and Council Bluffs, IA, combined with full service, parts and sales support in Cerritos, CA and Trenton, NJ, distributors, fleet and leasing customers across North and Latin America can expect the finest support.

Facility highlights include:  
➔ PALFINGER University



MANUFACTURING

MANUFACTURING SITES

- + NIAGARA FALLS, ON
- + TIFFIN, OH
- + TRENTON, NJ
- + COUNCIL BLUFFS, IA
- + OKLAHOMA CITY, OK
- + CERRITOS, CA