

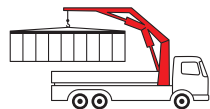


View thousands of Crane Specifications on FreeCraneSpecs.com

PSC 6229

PALFINGER Service Crane

PALFINGER CRANE



The service crane solution

The PSC 6229 was designed especially for crane body vehicles, allowing for maximum utilization of body compartment space and rear-bumper access to the bed. PALFINGER service cranes offer superior lift-to-weight ratios, while utilizing the full 29ft of hydraulic reach with its' self centering hexagonal booms. North American manufacturing and components including SAE hoses using JIC fittings, standard wireless remote control in conjunction with an industry leading 24-month warranty on all major components guarantee years of worry free usage.



Combining North American manufacturing, service and support with European technology

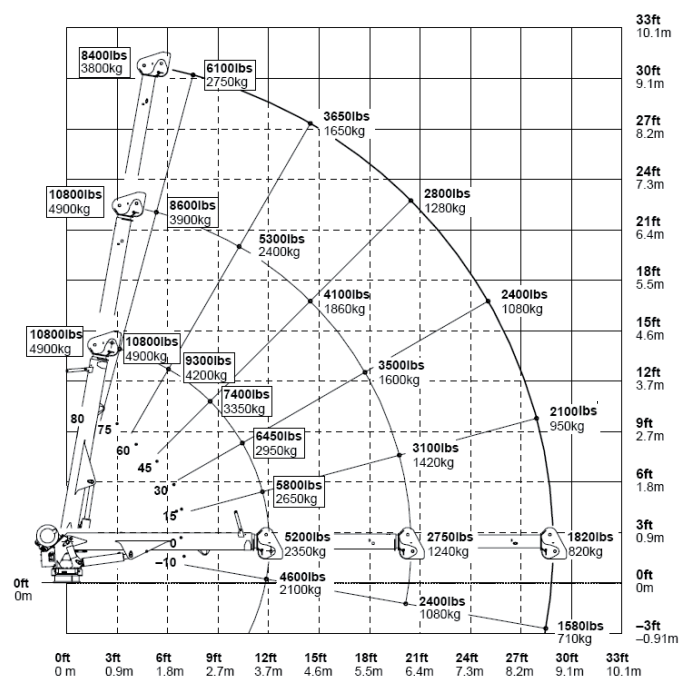
Omaha Standard Palfinger
3501 S. 11th St.
Council Bluffs, IA
51501
Phone: 1-712-328-7444
Toll-Free: 1-800-279-2201
Fax: 1-800-568-7444
www.omahastd.com

PSC 6229
02.10

PSC 6229 Service crane

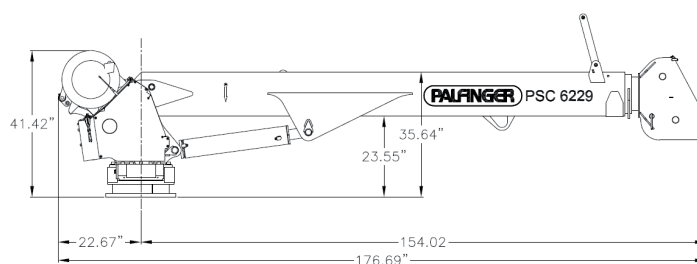
Weights of load-handling devices are part of the load lifted and must be deducted from the capacity

.....lbs Boxes denote two-part line required



Technical specifications

Max. lifting moment	69,425 ft.lbs
Max. lifting capacity (Double Line)	10,800 lbs
Max. hydraulic outreach	29' 0"
Lifting height from base of crane	28' 6"
Slewing angle	400°
Slewing torque	6,811 ft.lbs
Max. operating pressure	3,045 psi
Crane weight	2,396 lbs



Hydraulic system

- 3,045 psi system
- 30 gallon reservoir
- 12 GPM crane requirement
- Power requirement of 24hp
- Powered by integrated PTO and pump
- Integrated load-holding valves on all cylinders
- Integrated overload protection system

Rotation system

- Slewing torque 6,811 ft. lbs
- Slewing speed 2 rpm
- Slewing angle 400°

Control system

- Central control box
- Portable digital control unit
- Infinitely variable (proportional) speed controls
- True multi-function (8) wireless remote control
- Integrated E-stop button
- Manual valve activation capability

Winch

- Cable speed at 3rd wrap 51 ft/min
- Max winch force single line 5,400 lbs
- Max winch force double line 10,800 lbs
- Cable size 7/16 inch
- Rope length 131 ft
- Orbital hydraulic motor
- Epicyclic gear set
- Integrated two-block damage prevention feature

Chassis specifications

- Chassis style Conventional cab
- Front axle rating (FAWR) 12,000 lbs
- Rear axle rating (RAWR) 21,000 lbs
- CA Body specific
- Resistance to bending moment 720,000 in.lbs
- Frame section modulus 14.5 cu. in
- Frame yield strength 50,000 psi
- GVWR 25,999 lbs