



PK 34002 SH

PALFINGER

LIFETIME EXCELLENCE

**FUNCTIONAL DESIGN AND THE LATEST
CONTROL TECHNOLOGY SET STANDARDS IN
OPERATOR FRIENDLINESS AND COMFORT**





LIFETIME EXCELLENCE

PALFINGER LOADER CRANES ARE CONVINCING DUE TO THEIR SUPERIOR LIFE-CYCLE PERFORMANCE. THEY ARE THE MOST ECONOMICAL AND ALSO THE MOST RELIABLE OVER THE ENTIRE PRODUCT LIFE. FROM SOLUTION FINDING TO RESALE.

BETTER
SOLUTIONS

BETTER
EFFICIENCY

BETTER
ERGONOMICS

HIGHER VALUE
RETENTION



HIGHER
AVAILABILITY

HIGHER
SERVICEABILITY

BETTER
ECOLOGY

MORE
RELIABILITY

For further information please visit: www.palfinger.com/thebrand





POWER AND INTELLIGENCE IN PERFECT INTERACTION





- More lifting power due to S-HPLS
- More efficient and faster through continuous slewing system
- Additional applications due to Power Link Plus
- Increased operating times due to low-maintenance extension system
- Higher payloads due to intelligent lightweight design





PERFECT TOOL WITH SOPHISTICATED KINEMATICS

12 HIGHLIGHTS



CONTINUOUS SLEWING SYSTEM
UNRESTRICTED MOVEMENT

More efficient in operation due to faster loading cycles, since the crane can be slewed over a shorter distance. The crane works more efficiently and faster.



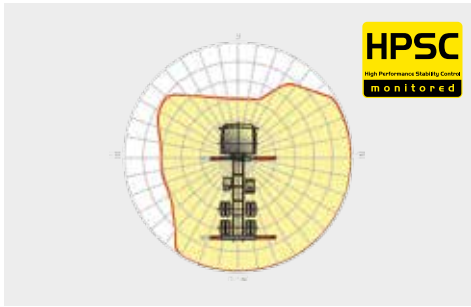
POWER LINK PLUS
HIGH VARIETY OF USES

With the 15-degree reverse linkage system, you can reach through low door openings and also work inside buildings. Heavy crane work – even in difficult conditions.



LOW-MAINTENANCE EXTENSION SYSTEM
REDUCES SERVICE TIME

With sliding elements made of synthetic material and the high-quality KTL coating, this boom system significantly simplifies service performed by the operator. This saves time and money – and protects the environment.



HPSC
MAXIMUM UTILISATION OF THE WORKING RANGE

The variable stabiliser positioning of the High Performance Stability Control System makes it possible to utilise the lifting capacity to the maximum. It enables working within tight spaces.



S-HPLS
MORE LIFTING POWER WHEN IT IS REALLY NEEDED

S-HPLS is one of the most important functions of the PALTRONIC 150. It is a fully automatic system for increasing the lifting power. Depending on the need, there is continuous adaptation of the lifting power and speed of the crane.



CONTROL TECHNOLOGY
COMMUNICATION WITH THE OPERATOR

New standards in operator friendliness through perfect interaction between PALTRONIC 150, control valve and radio remote control. The operator is guided clearly and safely.



POWER LINK CABLE WINCH
MORE COMFORT IN CABLE WINCH OPERATION

Characterised by low installation height, it is ideal for working inside buildings and transports with the crane boom unfolded. The Comfort Cable Routing reduces set-up times to a minimum.



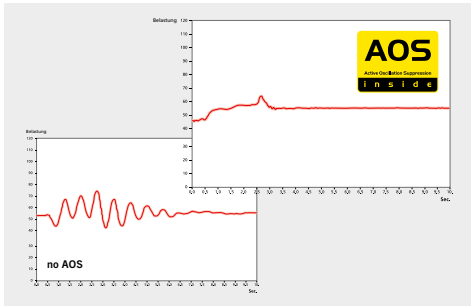
FUNCTIONAL DESIGN
PRACTICAL AND ATTRACTIVE

Robust plastic covers protect crane parts against dirt and damage. Better appearance and increased operational comfort – during the entire lifetime.



KTL – CATHODIC DIP PAINTING
FOR RETAINING HIGH VALUE

The UV-resistant coating guarantees long-term surface protection. Perfect appearance during the entire lifetime for maximum resale value.



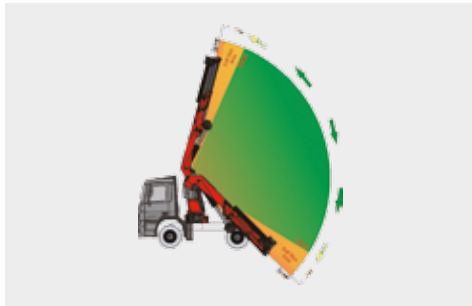
AOS
MAXIMUM PRECISION AND SAFETY

The active oscillation suppression system prevents "post-oscillation" in the event of rapid braking or load changes. The stress peaks on the extension boom system are reduced and material fatigue and wear are minimised. This increases the resale value.



DPS PLUS
MORE EFFICIENT FLY-JIB OPERATION

The Dual Power System allows multiple uses of the crane both for large outreaches as well as for heavy load operation.



SOFT STOP FUNCTION
MORE COMFORT AND SAFETY

The Soft Stop function is an electronic limit position damper. It causes gentle braking of all crane movements before the limit position is reached. Hence, jerky movements and load impacts can be avoided. The crane can be operated more gently and precisely.



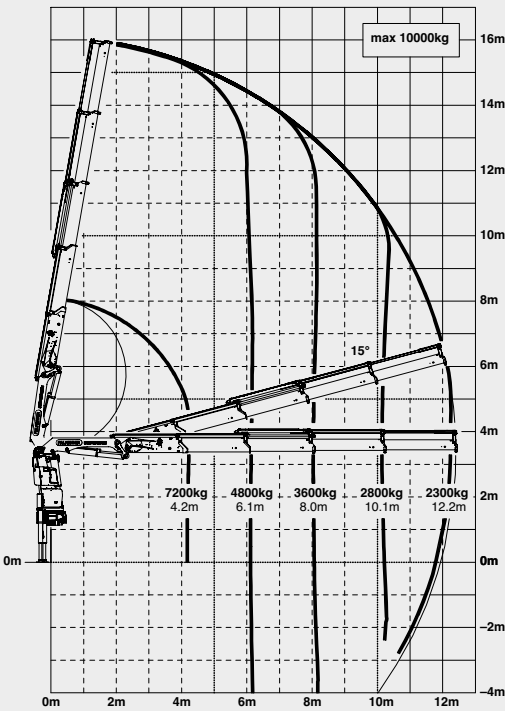
* Optional features / country-specific equipment



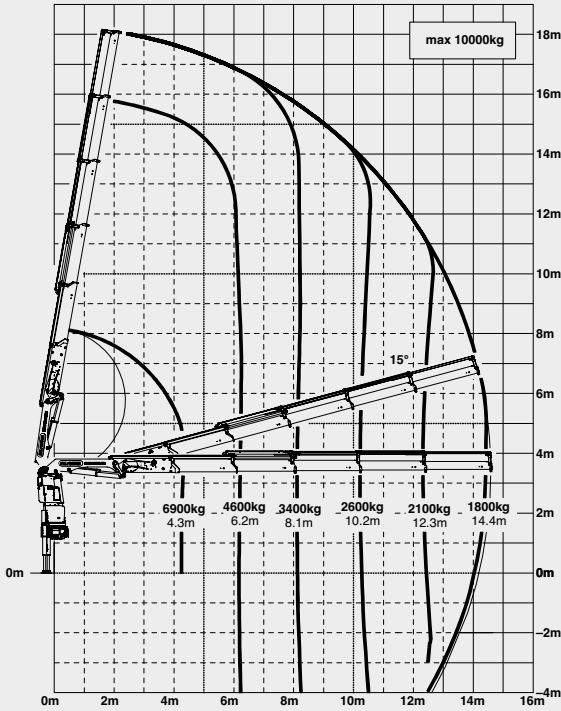
PK 34002 SH

HIGH PERFORMANCE

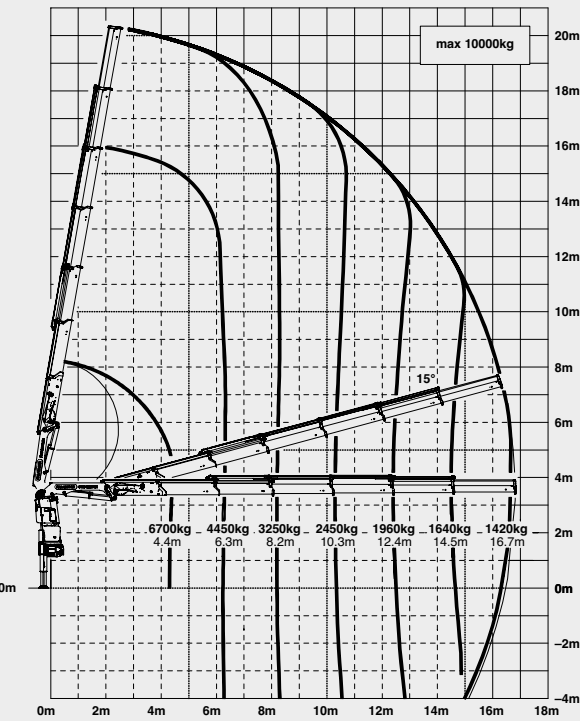
C



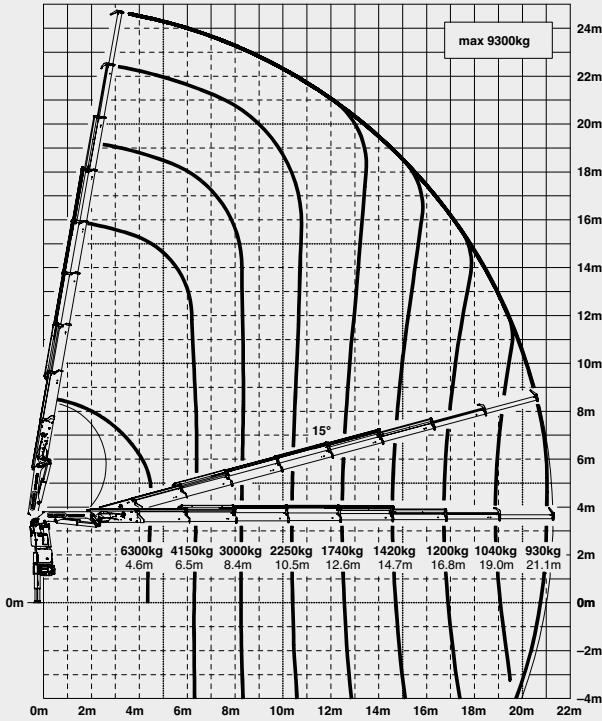
D



E



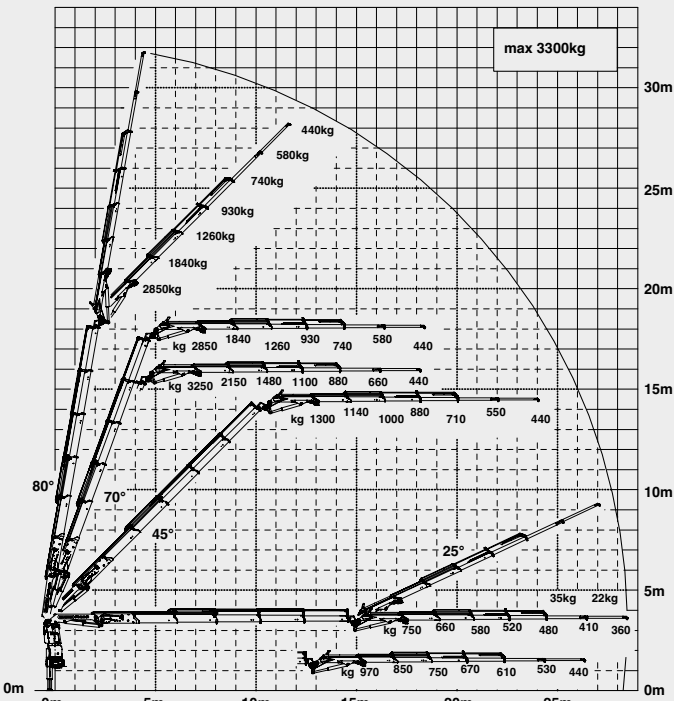
G



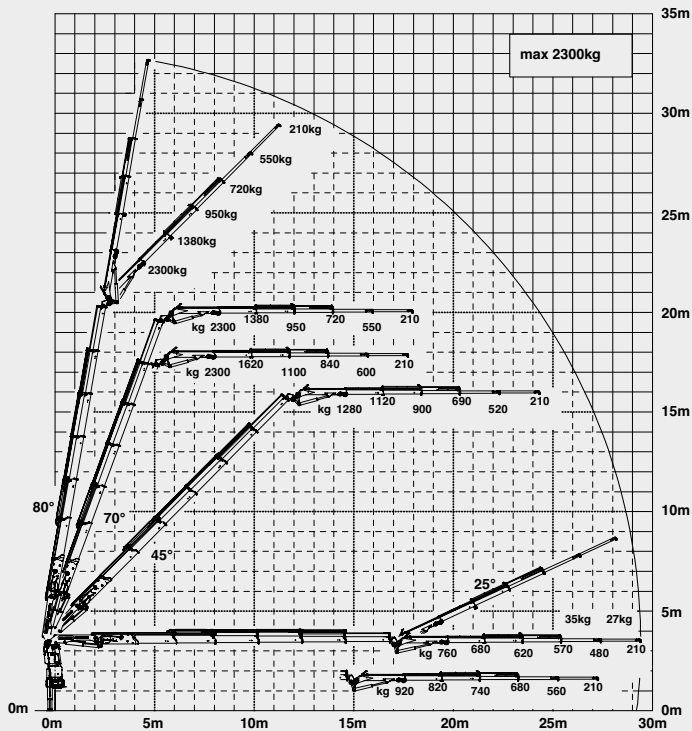


MORE LIFTING POWER WHEN IT IS REALLY NEEDED

D PJ080C JV2 DPS PLUS



E PJ060B JV2 DPS PLUS



LIFTING CAPACITIES

A	max.	10000 kg	22040 lbs
	4.1 m	13' 5"	7800 kg
	6.0 m	19' 8"	5300 kg
	7.9 m	25' 11"	4000 kg

B	max.	10000 kg	22040 lbs
	4.2 m	13' 9"	7500 kg
	6.1 m	20' 0"	5100 kg
	8.0 m	26' 3"	3800 kg
	10.1 m	33' 2"	3000 kg

C	max.	10000 kg	22040 lbs
	4.2 m	13' 9"	7200 kg
	6.1 m	20' 0"	4800 kg
	8.0 m	26' 3"	3600 kg
	10.1 m	33' 2"	2800 kg
	12.2 m	40' 0"	2300 kg
	14.4 m*	47' 3"	1880 kg
	16.6 m*	54' 6"	1540 kg

D	max.	10000 kg	22040 lbs
	4.3 m	14' 1"	6900 kg
	6.2 m	20' 4"	4600 kg
	8.1 m	26' 7"	3400 kg
	10.2 m	33' 6"	2600 kg
	12.3 m	40' 4"	2100 kg
	14.4 m	47' 3"	1800 kg
	16.7 m*	54' 9"	1480 kg
	18.8 m*	61' 8"	1240 kg

E	max.	10000 kg	22040 lbs
	4.4 m	14' 5"	6700 kg
	6.3 m	20' 8"	4450 kg
	8.2 m	26' 11"	3250 kg
	10.3 m	33' 10"	2450 kg
	12.4 m	40' 8"	1960 kg
	14.5 m	47' 7"	1640 kg
	16.7 m	54' 9"	1420 kg
	18.8 m*	61' 8"	1200 kg
	21.0 m*	68' 11"	1000 kg

F	max.	9600 kg	21160 lbs
	4.5 m	14' 9"	6500 kg
	6.4 m	20' 12"	4300 kg
	8.3 m	27' 3"	3100 kg
	10.4 m	34' 1"	2350 kg
	12.5 m	41' 0"	1860 kg
	14.6 m	47' 11"	1540 kg
	16.7 m	54' 9"	1320 kg
	18.9 m	62' 0"	1160 kg
	21.1 m*	69' 3"	1000 kg
	23.1 m*	75' 9"	570 kg

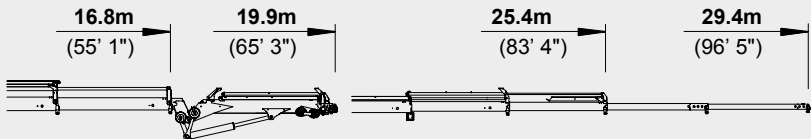
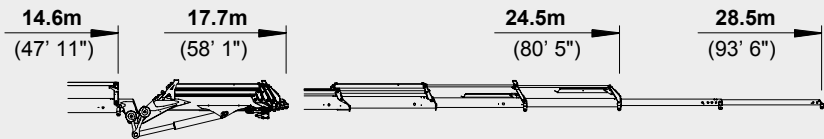
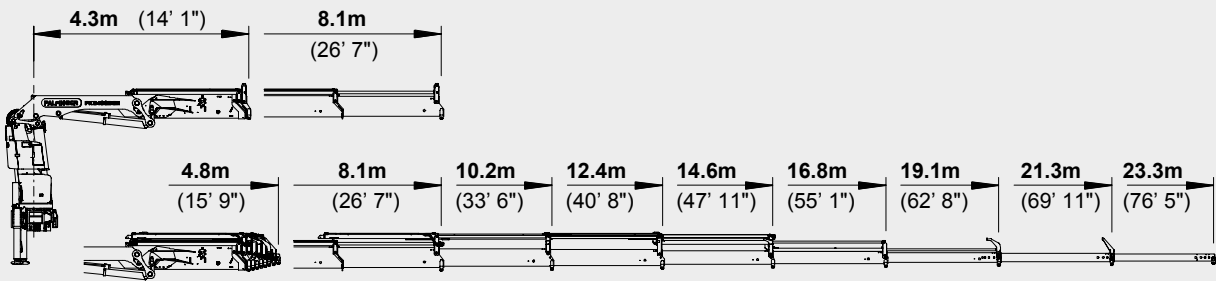
G	max.	9300 kg	20500 lbs
	4.6 m	15' 1"	6300 kg
	6.5 m	21' 4"	4150 kg
	8.4 m	27' 7"	3000 kg
	10.5 m	34' 5"	2250 kg
	12.6 m	41' 4"	1740 kg
	14.7 m	48' 3"	1420 kg
	16.8 m	55' 1"	1200 kg
	19.0 m	62' 4"	1040 kg
	21.1 m	69' 3"	930 kg
	23.1 m*	75' 9"	570 kg

*mechanical extension

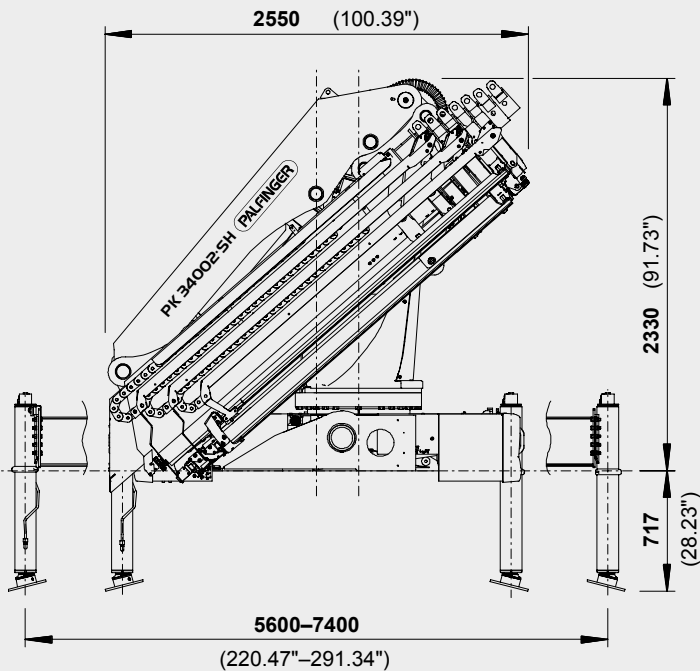
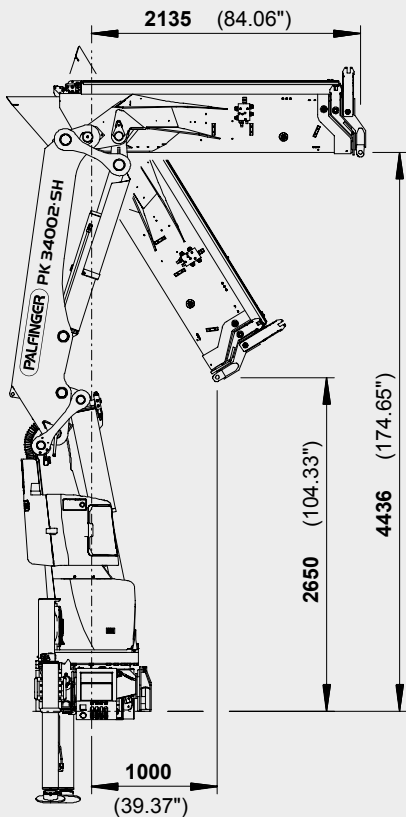


PERFECT DIMENSIONS

EXTENSION BOOM VARIATIONS



DIMENSIONS

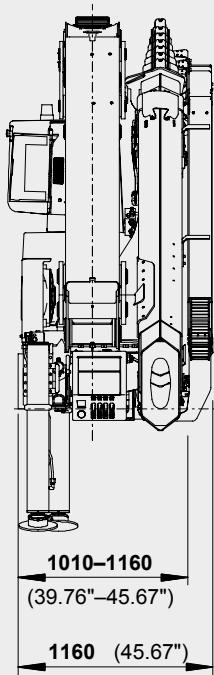




PK 34002 SH

D PJ080C JV2

E PJ060B JV2



TECHNICAL SPECIFICATIONS (EN 12999 HC1 HD5/B3)

Max. lifting moment	32.6 mt/320.0 kNm	236000 ft.lbs
Max. lifting capacity	10000 kg/98.1 kN	22050 lbs
Max. hydraulic outreach	21.3 m	69' 11"
Max. manual outreach	23.3 m	76' 5"
Max. outreach (with fly-jib)	29.4 m	96' 5"
Slewing angle	endless	
Slewing torque with 1 gear	3.3 mt/32.4 kNm	23880 ft.lbs
Slewing torque with 2 gears	4.0 mt/39.2 kNm	28940 ft.lbs
Stabiliser spread	std. 5.6 m/18' 4"	max. 7.4 m/24' 3"
Fitting space required (std.)	1.01 m	3' 4"
Width folded	2.55 m	8' 4"
Max. operating pressure	365 bar	5293 psi
Recommended pump capacity	from 90 l/min	23.8 US gal./min
	to 120 l/min	31.7 US gal./min
Dead weight (std.)	2931 kg	6460 lbs



Cranes shown in the leaflet are partially optional equipped and do not always correspond to the standard version. Country-specific regulations must be observed. Dimensions may vary. Subject to technical changes, errors and translation mistakes.