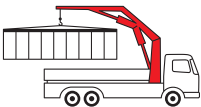




PK 13002 / PK 14002 - EH

High Performance

PALFINGER CRANE



CTL
protected

**Paltronic
50**
controlled

RRC
Radio Remote Control
operated

ISC
Integrated Stability Control
monitored

AOS
Active Oscillation Suppression
inside

Crane concept for versatile use



Power Link Plus. Flexibility at its best.

The PK 13002 *High Performance* has an impressively wide performance range. Used in the municipal sector, for transporting building materials or in classic unit load handling, it demonstrates its high level of flexibility and reliability on a daily basis. The PK 14002 EH *High Performance* is impressive in its class due to innovative technology, functional design and equipment features that define today's state-of-the-art truck-mounted crane.





Crane performance at the highest level





A synergy of function and design



Power Link Plus

This knuckle boom, specially developed by PALFINGER which can be angled upwards stands out by virtue of excellent movement geometry. Even in the tightest spaces difficult crane jobs can be performed with precision.



Maintenance-free extension system

With the maintenance-free extension system PALFINGER sets a clear path in easy servicing. The use of sliding elements made of special plastic in combination with the proven KTL cathodic dip painting means that the extension boom system no longer has to be serviced by the operator. This not only saves time and expense but also protects the environment.



Control console

All important information about the crane can be seen on the main control stand. A digital indicator counts and displays the operating hours. Ergonomic control levers and the optional lighting package provide increased safety and comfort even in poor visibility conditions.



Functional Design

Functional Design elements increase working comfort, protect against damage and make servicing and maintenance easier. The spiral tube hose optimally protects the hydraulic hoses from environmental influences, damage and dirt. Thanks to the patented interlock system, the crane is equipped with an innovative outrigger safety system for manual stabilizer supports.



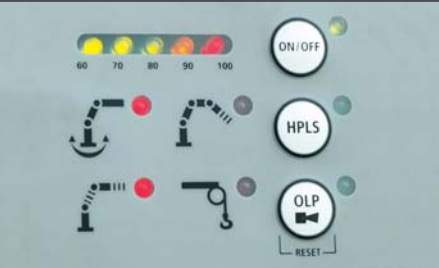
Lighting package (optional)

The control stand is supplied on request with LED illumination and backlit symbols. LED warning lights are fitted on the outriggers to provide better visibility.



Radio remote control

Radio remote control with digital data transmission (standard on EH models) offers maximum efficiency and comfort. The display integrated in the handset informs the crane operator continuously about the current capacity loading level of the crane.



PALTRONIC 50

Modern electronics in the increasingly complex crane system offers safety and comfort functions which make the crane operator's work easier and increases the efficiency of the crane job.



Outstanding power to weight ratio

Outrigger system

All the outriggers are fitted as standard with a ball-jointed support plate that can be swivelled through 10°. This enables them to adapt optimally to the ground. The enlarged plate also reduces the pressure on the ground. Three outrigger widths are available: 5.0 m, 16' 5" (mechanical), 5.6 m, 18' 4" (mechanical or hydraulic) and 6.6 m, 21' 8" (hydraulic). The crane's stabilizer cylinders can be pivoted fully hydraulically upwards through 180° (optional equipment).



Load-holding valve

They prevent the crane boom from dropping and are fitted as standard on all slewing, lifting, knuckle-boom and extension cylinders. The valves are positioned in such a way that they are protected against damage.



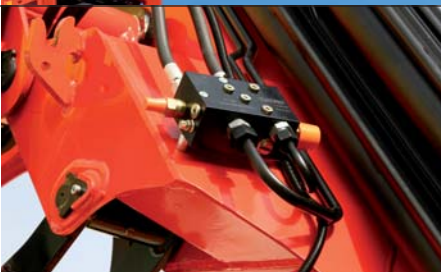
Hose equipment for auxiliary equipment

Hoses providing oil supply for auxiliary equipment are routed in compact trays and protective chains. A clean design offers maximum service life. There is also an optional solution with hose drum on the main boom with the hoses guided on the inside in the extension system for protection.



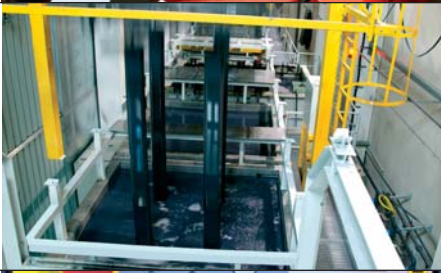
Return oil utilisation

The high speed of the extension system is impressive. It results from return oil utilisation, which is installed as standard, and the generously dimensioned hydraulic lines. This increases efficiency in all types of applications!



KTL – the cathodic dip painting

The shot-blasted crane parts are covered in zinc phosphate in an immersion process and coated electro-statically. The subsequent two-component top coating of paint provides a surface protection which in the past was usually only found in the automotive industry.



ISC (optional)*

The integrated stability control (ISC) is a system that monitors the stability of the crane vehicle. The system adjusts the crane's lifting forces depending on the current stability support situation and the crane boom to ensure the vehicle's stability over the entire working area.

* ISC or an alternative system for monitoring stability is mandatory in the version compliant with EN12999:2009.



AOS (optional)

The Active Oscillation Suppression system available exclusively from PALFINGER compensates for jolts and sharp stress cycles caused by crane operation. Because oscillations are eradicated the crane can work with precision, much faster and therefore more cost-efficiently.





PK 13002 High Performance

Max. lifting capacities

A

| | | | |
|-------------------------|---------|----------|-----------|
| Max. lifting capacities | | 6100 kg | 13440 lbs |
| Outreach | | Capacity | |
| hydraulic | | | |
| 3.9 m | 12' 10" | 2950 kg | 6500 lbs |
| 5.9 m | 19' 4" | 1900 kg | 4200 lbs |
| 7.9 m | 25' 11" | 1400 kg | 3100 lbs |

B

| | | | |
|-------------------------|---------|----------|-----------|
| Max. lifting capacities | | 6000 kg | 13200 lbs |
| Outreach | | Capacity | |
| hydraulic | | | |
| 4.0 m | 13' 1" | 2800 kg | 6100 lbs |
| 6.0 m | 19' 8" | 1760 kg | 3900 lbs |
| 8.0 m | 26' 3" | 1280 kg | 2850 lbs |
| 10.1 m | 33' 2" | 1000 kg | 2200 lbs |
| 12.4 m* | 40' 8" | 740 kg | 1630 lbs |
| 14.6 m* | 47' 11" | 570 kg | 1260 lbs |

C

| | | | |
|-------------------------|---------|----------|-----------|
| Max. lifting capacities | | 5850 kg | 12890 lbs |
| Outreach | | Capacity | |
| hydraulic | | | |
| 4.1 m | 13' 5" | 2650 kg | 5900 lbs |
| 6.1 m | 20' 0" | 1660 kg | 3650 lbs |
| 8.1 m | 26' 7" | 1180 kg | 2600 lbs |
| 10.2 m | 33' 6" | 890 kg | 1960 lbs |
| 12.4 m | 40' 8" | 730 kg | 1600 lbs |
| 14.6 m* | 47' 11" | 560 kg | 1240 lbs |
| 16.8 m* | 55' 1" | 440 kg | 970 lbs |

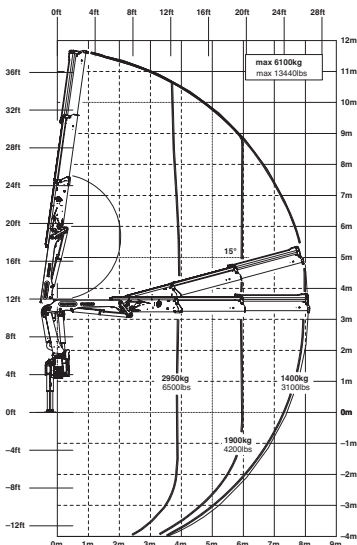
D

| | | | |
|-------------------------|---------|----------|-----------|
| Max. lifting capacities | | 5750 kg | 12670 lbs |
| Outreach | | Capacity | |
| hydraulic | | | |
| 4.2 m | 13' 9" | 2550 kg | 5600 lbs |
| 6.2 m | 20' 4" | 1560 kg | 3450 lbs |
| 8.2 m | 26' 11" | 1080 kg | 2400 lbs |
| 10.3 m | 33' 10" | 800 kg | 1760 lbs |
| 12.5 m | 41' 0" | 630 kg | 1400 lbs |
| 14.6 m | 47' 11" | 530 kg | 1160 lbs |
| 16.8 m* | 55' 1" | 410 kg | 900 lbs |
| 18.8 m* | 61' 8" | 340 kg | 750 lbs |

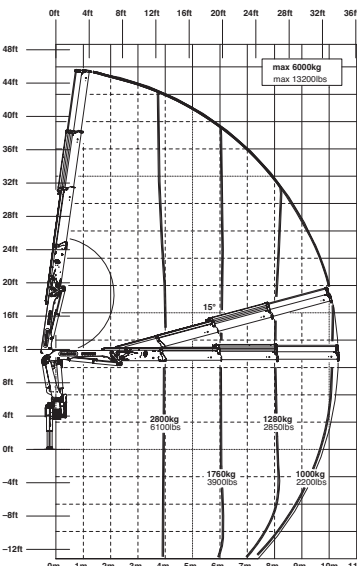
E

| Max. lifting capacities | | 5650 kg | 12450 lbs |
|-------------------------|--------|----------|-----------|
| Outreach | | Capacity | |
| hydraulic | | | |
| 4.3 m | 14' 1" | 2400 kg | 5300 lbs |
| 6.3 m | 20' 8" | 1460 kg | 3200 lbs |
| 8.3 m | 27' 3" | 980 kg | 2150 lbs |
| 10.4 m | 34' 1" | 700 kg | 1540 lbs |
| 12.6 m | 41' 4" | 540 kg | 1180 lbs |
| 14.7 m | 48' 3" | 440 kg | 960 lbs |
| 16.8 m | 55' 1" | 370 kg | 820 lbs |
| 18.9 m* | 62' 0" | 300 kg | 660 lbs |

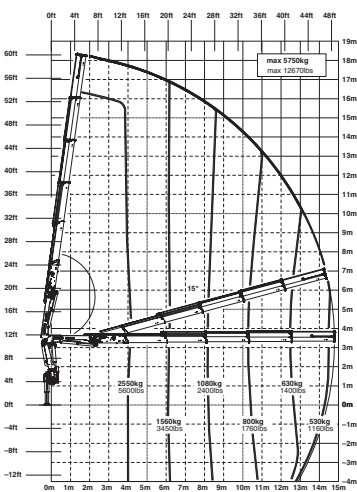
A



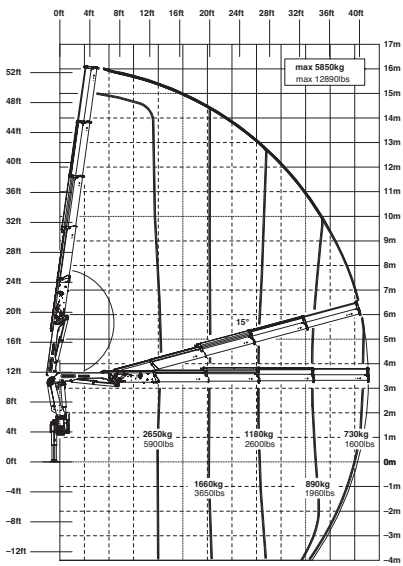
B



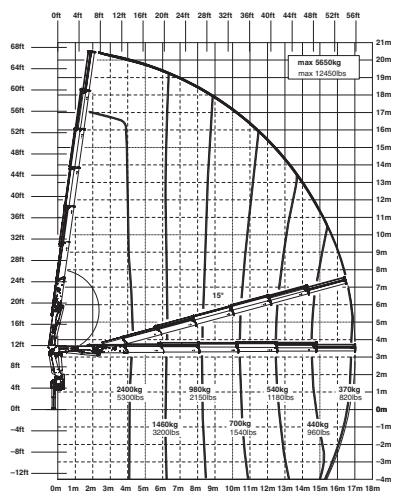
D



C



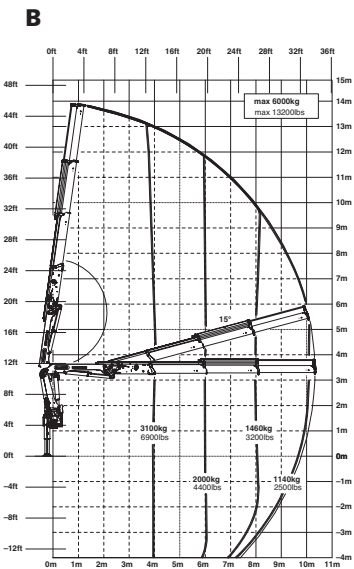
E



The outreaches stated are with a boom angle of 20° and are therefore not the maximum.



PK 14002 EH High Performance



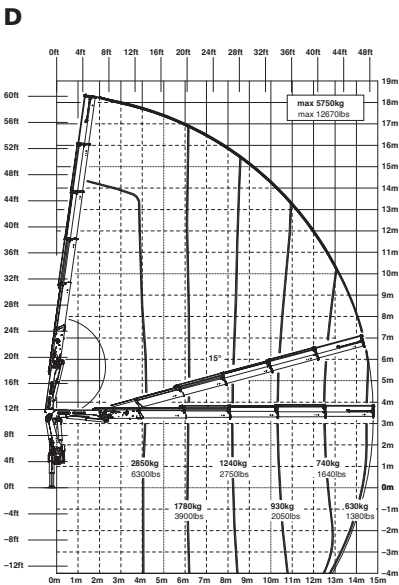
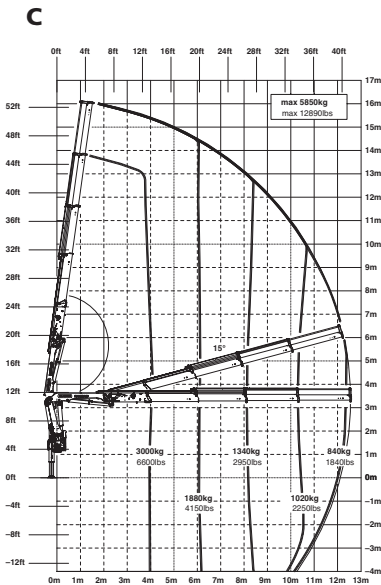
Package model PK 14002 EH:

- E-HPLS
- Paltronic 50
- Radio remote control with LED display
- Danfoss control valve or PVG2000
- 8.5 kW oil cooler
- 140 l oil tank

Max. lifting capacities

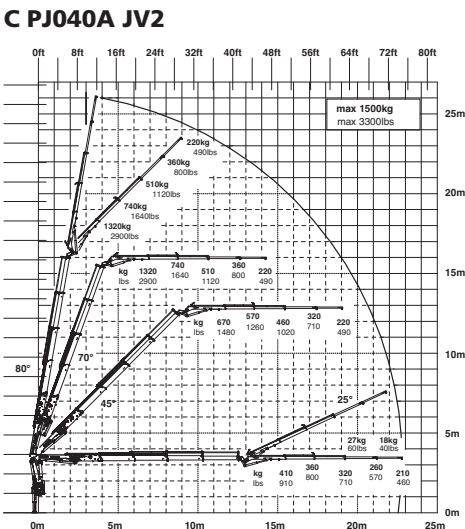
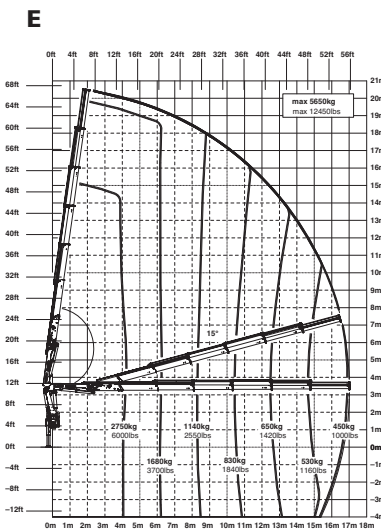
| A | | | |
|-------------------------|---------|----------|-----------|
| Max. lifting capacities | | 6100 kg | 13440 lbs |
| Outreach | | Capacity | |
| hydraulic | | | |
| 3.9 m | 12' 10" | 3250 kg | 7200 lbs |
| 5.9 m | 19' 4" | 2150 kg | 4700 lbs |
| 7.9 m | 25' 11" | 1580 kg | 3500 lbs |

| B | | | |
|-------------------------|---------|----------|-----------|
| Max. lifting capacities | | 6000 kg | 13200 lbs |
| Outreach | | Capacity | |
| hydraulic | | | |
| 4.0 m | 13' 1" | 3100 kg | 6900 lbs |
| 6.0 m | 19' 8" | 2000 kg | 4400 lbs |
| 8.0 m | 26' 3" | 1460 kg | 3200 lbs |
| 10.1 m | 33' 2" | 1140 kg | 2500 lbs |
| 12.4 m* | 40' 8" | 860 kg | 1900 lbs |
| 14.6 m* | 47' 11" | 670 kg | 1480 lbs |



| C | | | |
|-------------------------|---------|----------|-----------|
| Max. lifting capacities | | 5850 kg | 12890 lbs |
| Outreach | | Capacity | |
| hydraulic | | | |
| 4.1 m | 13' 5" | 3000 kg | 6600 lbs |
| 6.1 m | 20' 0" | 1880 kg | 4150 lbs |
| 8.1 m | 26' 7" | 1340 kg | 2950 lbs |
| 10.2 m | 33' 6" | 1020 kg | 2250 lbs |
| 12.4 m | 40' 8" | 840 kg | 1840 lbs |
| 14.6 m* | 47' 11" | 660 kg | 1460 lbs |
| 16.8 m* | 55' 1" | 530 kg | 1170 lbs |

| D | | | |
|-------------------------|---------|----------|-----------|
| Max. lifting capacities | | 5750 kg | 12670 lbs |
| Outreach | | Capacity | |
| hydraulic | | | |
| 4.2 m | 13' 9" | 2850 kg | 6300 lbs |
| 6.2 m | 20' 4" | 1780 kg | 3900 lbs |
| 8.2 m | 26' 11" | 1240 kg | 2750 lbs |
| 10.3 m | 33' 10" | 930 kg | 2050 lbs |
| 12.5 m | 41' 0" | 740 kg | 1640 lbs |
| 14.6 m | 47' 11" | 630 kg | 1380 lbs |
| 16.8 m* | 55' 1" | 500 kg | 1100 lbs |
| 18.8 m* | 61' 8" | 410 kg | 900 lbs |



| E | | | |
|-------------------------|--------|----------|-----------|
| Max. lifting capacities | | 5650 kg | 12450 lbs |
| Outreach | | Capacity | |
| hydraulic | | | |
| 4.3 m | 14' 1" | 2750 kg | 6000 lbs |
| 6.3 m | 20' 8" | 1680 kg | 3700 lbs |
| 8.3 m | 27' 3" | 1140 kg | 2550 lbs |
| 10.4 m | 34' 1" | 830 kg | 1840 lbs |
| 12.6 m | 41' 4" | 650 kg | 1420 lbs |
| 14.7 m | 48' 3" | 530 kg | 1160 lbs |
| 16.8 m | 55' 1" | 450 kg | 1000 lbs |
| 18.9 m* | 62' 0" | 370 kg | 820 lbs |

* mechanical extension



Inspirational efficiency
and profitability

KP-HT3/14002EM1+E
E 11/10, K 11/10, D 11/10

PK 13002 High Performance

Technical Specifications (EN 12999 HC1 HD4/B3)

| | | |
|-------------------------------|-------------------|-------------------|
| Max. lifting moment | 12.0 mt/117.7 kNm | 86780 ft.lbs |
| Max. lifting capacity | 6200 kg/60.8 kN | 13670 lbs |
| Max. hydraulic outreach | 17.0 m | 55' 9" |
| Max. manual outreach | 19.0 m | 62' 4" |
| Slewing angle | 420° | |
| Slewing torque | 1.6 mt/15.7 kNm | 11580 ft.lbs |
| Stabilizer spread | std. 5.0 m/16' 5" | max. 6.6 m/21' 8" |
| Fitting space required (std.) | 0.83 m | 2' 9" |
| Width folded | 2.51 m | 8' 3" |
| Max. operating pressure | 320 bar | 4640 psi |
| Recommended pump capacity | from 35 l/min | 9.2 US gal./min |
| | to 50 l/min | 13.2 US gal./min |
| Dead weight (std.) | 1764 kg | 3890 lbs |

PK 14002 EH High Performance

Technical Specifications (EN 12999 HC1 HD4/B3)

| | | |
|-------------------------------|-------------------|-------------------|
| Max. lifting moment | 13.4 mt/131.0 kNm | 96590 ft.lbs |
| Max. lifting capacity | 6200 kg/60.8 kN | 13670 ft.lbs |
| Max. hydraulic outreach | 17.0 m | 55' 9" |
| Max. manual outreach | 19.0 m | 62' 4" |
| Outreach (+ fly jib) | 23.0 m | 75' 6" |
| Slewing angle | 420° | |
| Slewing torque | 1.6 mt/15.7 kNm | 11580 ft.lbs |
| Stabilizer spread | std. 5.0 m/16' 5" | max. 6.6 m/21' 8" |
| Fitting space required (std.) | 0.83 m | 2' 9" |
| Width folded | 2.51 m | 8' 3" |
| Max. operating pressure | 350 bar | 5075 psi |
| Recommended pump capacity | from 50 l/min | 13.2 US gal./min |
| | to 70 l/min | 18.5 US gal./min |
| Dead weight (std.) | 1789 kg | 3940 lbs |

