



# PK 11502

*Performance*

**PALFINGER**



WITH ITS ENORMOUS OUTREACH  
IT SETS NEW STANDARDS IN ITS CLASS!







# THIS CRANE OFFERS THE HIGHEST LEVEL OF QUALITY, SAFETY AND RELIABILITY

The PK 11502 *Performance* stands out by virtue of its versatility. Whether in the municipal sector or in recycling duty, whether handling building materials or unit loads, day after day it proves its great performance spectrum.  
The appearance of the *Performance* cranes underlines the new line from PALFINGER: function and design in synergy.







# IT PROVES ITS RELIABILITY IN CONTINUOUS SERVICE ON THE CONSTRUCTION SITE

## Adjustable slide blocks

## Internally routed oil ducts

On the multiple extensions there are no hydraulic hoses between the cylinders. The internally routed oil passages make it possible to have a compact boom design.

## Return oil use

By using of the return oil flow in the extension system, the operating speed is increased by 30 per cent.

## Extension system

The extension cylinders are guided in Jordal rails over rollers.

## Height compensation

## Functional design

- Enclosure in the area of the control valve
- Enclosure of the hoses behind the crane column
- Spiral tube hose between base frame and crane column

## Optional

- The PALFINGER radio control system with digital data transmission
- The PALTRONIC 50 electronic control system
- The hydraulic overload safety device
- Hose equipment for accessories







**THE PK 11502 *PERFORMANCE* IS EQUIPPED WITH THE PROVEN PALFINGER POWER LINK SYSTEM**



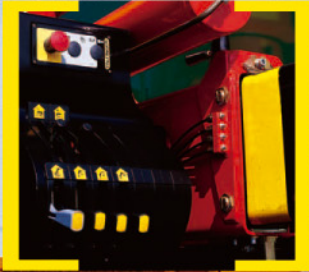
**Hose equipment for accessories**

With this option you can provide the oil supply to accessories. The hoses are routed in compact troughs and plastic link chains. They are thus optimally protected.



**Load-holding valves**

They prevent the crane boom from dropping and are fitted as standard on both lifting and extension cylinders. The valves are positioned in such a way that they are protected from accidental damaged.



**Control valve**

It functions proportionally, is ergonomically arranged and the low leverage force permits very sensitive crane control.

**Ergonomic crane control**

The operating levers for all crane functions are ergonomically arranged on the control console. This provides comfortable, efficient working. The control console is positioned so that it is easy to service.

**Central lubrication**

for all bearings on the base frame.

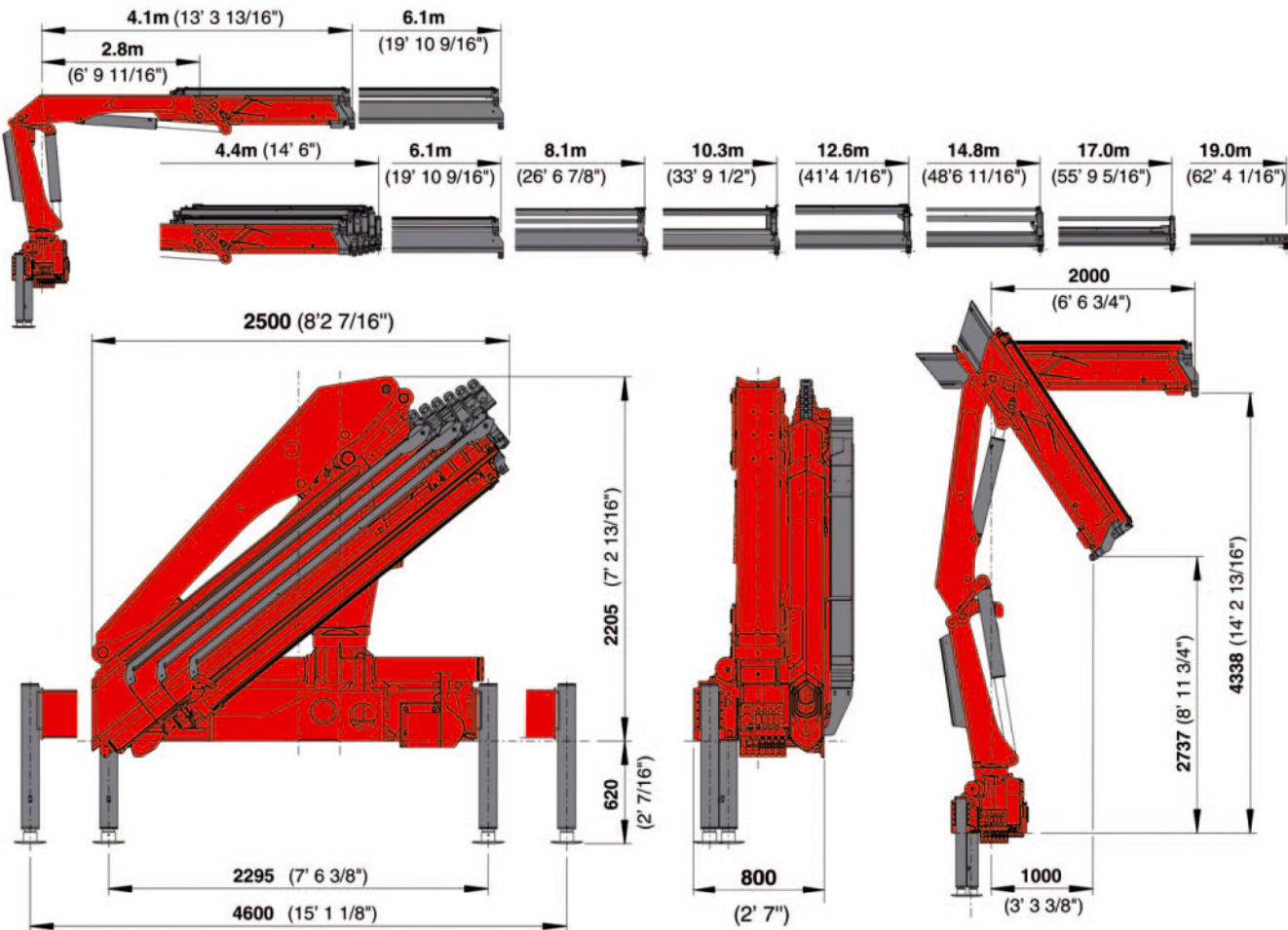
**Outrigger widths**

The PK 11502 *Performance* fits to all normal truck chassis designs. Three outrigger widths are possible: 4.6 m (15'1") mechanical, 5.6 m (18'4") respectively 6.6 m (21'8") hydraulic.





THE PK 11502 *PERFORMANCE* ALREADY MEETS THE REQUIREMENTS OF THE FUTURE EN 12999 CRANE STANDARD



PK 11502 Performance			
Technical specifications (DIN 15018 H1-B3)			
Max. lifting moment	10.9 mt/107.0 kNm	78890 ft.lbs	
Max. lifting capacity	6200 kg/60.8 kN	13670 lbs	
Max. hydraulic outreach	17.0 m	55' 9"	
Maximum outreach	0.0 m	0' 0"	
Slewing angle	420°		

PK 11502 Performance			
Standard crane			
Slewing torque	1.4 mt/13.7 kNm	10100 ft.lbs	
Stabilizer spread standard	4.6 m	15' 1"	
Stabilizer spread maximum	6.6 m	21' 8"	
Fitting space required	0.80 m	2' 7"	
Width folded	2.5 m	8' 2"	
Operating pressure	300 bar	4350 psi	
Recommended pump capacity	from 35 l/min.	7.7 imp.gal./min.	9.2 US gal./min
by radio remote control and LS-System	to 50 l/min.	11.0 imp.gal./min.	13.2 US gal./min
Dead weight (without mounting parts, pump and oil)	1556 kg	3430 lbs	

Executions shown in the leaflet are not always corresponding to standard execution.  
Country-specific regulations are to be observed upon attachment.





# WELL SUPPORTED BY MORE THAN 1400 PALFINGER CONTRACT PARTNERS WORLDWIDE

## Max. lifting capacities:

PK 11502 Performance					
hydraulic					
Outreach		Capacity			
1.6 m	6200 kg	5' 3"	13670 lbs		
4.3 m	2500 kg	14' 1"	5510 lbs		
5.9 m	1820 kg	19' 4"	4010 lbs		

PK 11502 Performance A					
hydraulic					
Outreach		Capacity			
1.6 m	6100 kg	5' 3"	13450 lbs		
4.3 m	2420 kg	14' 1"	5340 lbs		
5.9 m	1690 kg	19' 4"	3730 lbs		
7.9 m	1250 kg	25' 11"	2760 lbs		

PK 11502 Performance B					
hydraulic					
Outreach		Capacity			
1.6 m	6000 kg	5' 3"	13230 lbs		
4.3 m	2380 kg	14' 1"	5250 lbs		
5.9 m	1580 kg	19' 4"	3480 lbs		
7.9 m	1130 kg	25' 11"	2490 lbs		
10.2 m	870 kg	33' 6"	1920 lbs		
manual					
12.4 m	640 kg	40' 8"	1410 lbs		
14.6 m	490 kg	47' 11"	1080 lbs		
16.8 m	380 kg	55' 1"	840 lbs		

PK 11502 Performance C					
hydraulic					
Outreach		Capacity			
1.6 m	5850 kg	5' 3"	12900 lbs		
4.3 m	2250 kg	14' 1"	4960 lbs		
5.9 m	1500 kg	19' 4"	3310 lbs		
7.9 m	1040 kg	25' 11"	2290 lbs		
10.2 m	770 kg	33' 6"	1700 lbs		
12.4 m	620 kg	40' 8"	1370 lbs		
manual					
14.6 m	470 kg	47' 11"	1040 lbs		
16.8 m	360 kg	55' 1"	790 lbs		
18.8 m	290 kg	61' 8"	640 lbs		

PK 11502 Performance D					
hydraulic					
Outreach		Capacity			
1.6 m	5750 kg	5' 3"	12680 lbs		
4.3 m	2190 kg	14' 1"	4830 lbs		
5.9 m	1430 kg	19' 4"	3150 lbs		
7.9 m	960 kg	25' 11"	2120 lbs		
10.2 m	690 kg	33' 6"	1520 lbs		
12.4 m	530 kg	40' 8"	1170 lbs		
14.6 m	440 kg	47' 11"	970 lbs		
manual					
16.8 m	340 kg	55' 1"	750 lbs		
18.8 m	270 kg	61' 8"	600 lbs		

PK 11502 Performance E					
hydraulic					
Outreach		Capacity			
1.6 m	5650 kg	5' 3"	12460 lbs		
4.3 m	2120 kg	14' 1"	4670 lbs		
5.9 m	1350 kg	19' 4"	2980 lbs		
7.9 m	880 kg	25' 11"	1940 lbs		
10.2 m	590 kg	33' 6"	1300 lbs		
12.4 m	440 kg	40' 8"	970 lbs		
14.6 m	340 kg	47' 11"	750 lbs		
16.9 m	290 kg	55' 1"	640 lbs		
manual					
18.8 m	230 kg	61' 8"	510 lbs		

The reaches are indicated for a 20° main boom position and are therefore not the maximum ones.

PK 11502 Performance

