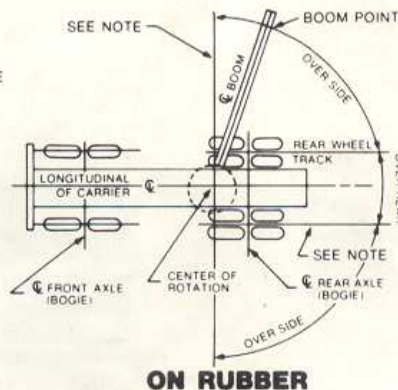
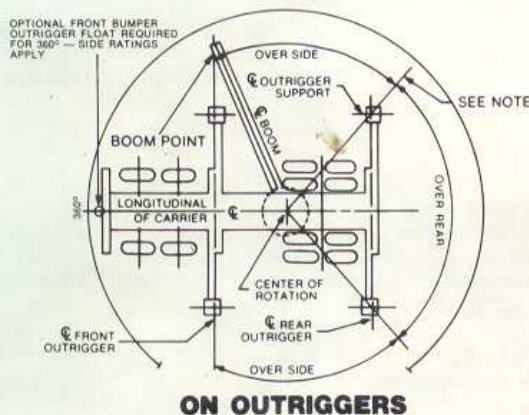




# lifting capacities

LOAD RATINGS IN POUNDS														WITHOUT OUTRIGGERS		
Rad. in Ft.	Over Side and Over Rear With Outriggers															
	Powered Boom Length — All Powered Sections Extended Equally															
	33 Feet			45 Feet		57 Feet		69 Feet		81 Feet		93 Feet		105 Feet		
	△°	Lbs.	△°	Lbs.	△°	Lbs.	△°	Lbs.	△°	Lbs.	△°	Lbs.	△°	Lbs.	Over Side	Over Rear
12	60	150,000	69	90,000	75	83,000									40,000	50,000
15	54	120,000	65	86,000	71	80,000	75	74,000	75	*55,000					40,000	50,000
20	42	90,000	58	74,000	66	67,000	71	60,000	74	52,000	75	*40,000			24,500	32,000
25	25	66,000	50	62,000	60	56,000	66	50,000	71	44,000	74	38,000	75	*31,000	16,000	22,000
30			40	48,000	54	48,000	62	43,000	67	38,000	70	32,500	73	27,500	11,000	15,800
35			28	37,000	47	37,000	57	37,000	63	33,000	67	28,500	70	24,000	8,000	12,000
40					39	29,500	51	29,500	59	29,500	63	25,000	67	21,500	5,600	9,000
45					30	24,500	45	24,500	54	24,500	60	22,500	64	19,400	3,500	6,400
50							39	20,500	49	20,500	56	20,500	61	17,700	2,000	4,600
60									38	15,000	48	15,000	54	15,000	1,000	3,200
70											38	11,100	47	11,100	Do not exceed 60 ft. radius without the use of out- riggers.	
80											25	8,000	38	8,000		
90													27	5,600		
100													1	4,200		

\*Load ratings, for maximum 75° boom elevation, will be at longer radius than indicated.



## AREAS OF OPERATION

Operating radius is the horizontal distance from the axis of rotation before loading, to the center of the vertical hoistline or tackle with loads applied. Boom angles shown are with rated loads applied and provide an approximation of the operating radius. For rated loads, do not exceed the specified operating radius. Crane load ratings are for machines with 12,000 pounds of counterweight and do not exceed 85% of the tipping loads. Ratings above the heavy line are based on the machine's hydraulic or structural competence and not on the machine stability. Weights of hooks, hook blocks, slings, and all other load handling devices, except the hoist rope, shall be considered a part of the load. Crane load ratings with outriggers are based on outriggers fully extended and set to a distance of 11 feet 0 inches from the longitudinal axis of the carrier to the outrigger float pivot connection and wheels within the boundary of the outriggers unloaded. Crane load ratings without outriggers depend on tire capacity and condition of tires inflated to 100 P.S.I.

Crane load ratings are based on freely suspended loads with the machine leveled and standing on a firm, uniform supporting surface. Practical working loads depend on supporting surface, wind, and other factors affecting stability, hazardous surroundings, experience of personnel and proper handling, all of which must be taken into account by the operator. Positioning or operation at radii and boom or jib lengths beyond the maximums and minimums shown, is not intended or approved. For boom lengths not shown, use load ratings of next longer boom. The maximum load which may be telescoped is limited by hydraulic pressure, boom angle and boom lubrication. All sections of the boom must be telescoped equally. For 33 foot boom length ratings, telescope cylinders must be fully retracted and against stops. Method of extension is independent or synchronous with each powered section extendible a distance of 24 feet.

MAXIMUM LATTICE JIB LOAD RATINGS IN POUNDS						
Min. Boom Angle	Jib Length In Feet					
	30	40	50	60	70	
0° OFF-SET	75°	14,000	12,500	11,000	9,500	8,000
	70°	11,500	10,000	9,000	8,000	7,000
	65°	9,500	8,000	7,000	6,000	5,400
	60°	8,000	6,000	5,000	4,500	3,800
	55°	6,500	4,500	3,600	3,100	2,600
7.5° OFF-SET	75°	12,500	11,000	9,500	8,000	6,500
	70°	11,000	9,000	8,000	7,000	5,800
	65°	9,000	7,000	6,000	5,300	4,700
	60°	7,500	5,500	4,500	4,000	3,300
	55°	6,000	4,000	3,200	2,700	2,300
15° OFF-SET	75°	11,000	9,500	8,000	6,500	5,000
	70°	9,500	8,000	7,000	6,000	4,500
	65°	8,000	6,500	5,500	4,600	3,800
	60°	7,000	5,000	4,200	3,500	2,800
	55°	5,700	3,600	2,800	2,300	2,000

**NOTE: Below 55° Boom Angles Lifting With Jib Not Recommended.**

With lattice jib in operating position powered boom ratings shall be reduced according to the jib length as shown in pounds.

Deductions apply when lifting from boom point with lattice jib erected. Use ratings in "105 feet" column and apply appropriate deduction. For boom lengths less than 105 feet, use boom angle to determine load rating in "105 feet" column. For boom angles not shown, use rating of next lower boom angle.

Jib Length	30 Ft.	40 Ft.	50 Ft.	60 Ft.	70 Ft.
Boom Deduct	2,000	2,600	3,200	3,800	4,400

Maximum jib load ratings are based on structural competence. Jib load ratings at any radius shall not exceed the powered boom load ratings at the same radius, and shall not exceed maximum jib load ratings shown. For bucket ratings on jib, deduct 20% from maximum jib load ratings. Maximum jib operating radius shall not exceed the operating radius of the powered boom for any given length setting. Use of the outriggers is recommended when boom is equipped with jib.

MAX. TELESCOPING JIB LOAD RATINGS IN POUNDS				
Min. Boom Angle	27 Foot Jib		45 Foot Jib	
	No Offset	30° Offset	No Offset	8° Offset
75°	10,000	5,200	5,000	3,800
73°	9,000	5,100	4,600	3,600
69°	8,000	4,950	4,000	3,250
66°	7,300	4,850	3,700	3,050
63°	6,800	4,750	3,450	2,900
60°	6,500	4,700	3,200	2,700
55°	6,000	4,550	2,900	2,500
50°	5,500	4,400	2,700	2,300
40°	5,000	4,150	2,500	2,100
30°	4,700	4,000	2,400	2,000

With telescoping jib in operating position, main hook ratings shall be reduced by 2,500 pounds.

HOIST REEVING												
P&H #16 — Rope Diameter — 3/4 In. Breaking Strength — 51,800 lbs.												
PERMISSIBLE LINE LOAD IN POUNDS												
Parts Line	1	2	3	4	5	6	7	8	9	10	11	12
P&H #16	12,500	25,000	37,500	50,000	62,500	75,000	87,500	100,000	112,500	125,000	137,500	150,000

**NOTE: OPERATION OF THIS EQUIPMENT IN EXCESS OF LOAD RATINGS AND DISREGARD OF INSTRUCTIONS VOIDS THE WARRANTY.**





## working ranges

